

**A Helping Hand**

**The 2021 Resource Guide for People With Cancer**



**CANCER***care*<sup>®</sup>

# **A Helping Hand**

**The 2021 Resource Guide  
for People With Cancer**

**National Office  
275 Seventh Avenue  
New York, NY 10001**



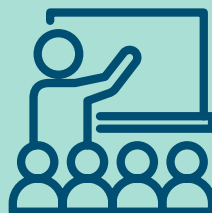
**FINANCIAL HELP**



**INFO/EDUCATION**



**SPECIAL POPULATIONS**



**SERVICES**



**CANCER TYPES**

**Acknowledgements**

This activity is supported by Bristol Myers Squibb and a grant from Genentech.

CancerCare would also like to acknowledge the Cancer Financial Assistance Coalition (CFAC) for its collaborative efforts in sharing resources and educating patients and providers about financial issues.

© 2021 CancerCare®

CancerCare®  
 National Office  
 275 Seventh Ave.  
 New York, NY 10001  
 800-813-HOPE (4673)

[www.cancercare.org](http://www.cancercare.org)

CancerCare relies on the generosity of supporters to provide our services completely free of charge to anyone affected by cancer. If you have found this resource helpful and wish to donate, please visit [www.cancercare.org/donate](http://www.cancercare.org/donate). You may also mail a check, payable to CancerCare, to: CancerCare®, Attn: Donations, 275 Seventh Ave., New York, NY 10001.

What did you think of this publication?  
 Tell us at [info@cancercare.org](mailto:info@cancercare.org).

**Please note:** Mention in this publication does not imply endorsement on the part of CancerCare. The content of this publication is independent, non-promotional and free of commercial influence.

Introduction..... **3**

Taking Control of Your Finances..... **5**

Sources of Financial Assistance..... **7**

Finding Help in Your Community..... **11**

Getting Help From Advocacy Organizations..... **12**

A Guide to the “Helping Hand” Categories..... **15**

National Assistance Organizations..... **17**

Regional Assistance Organizations..... **92**

Indices..... **229**

**Index of National Organizations  
 by Cancer Type..... 229**

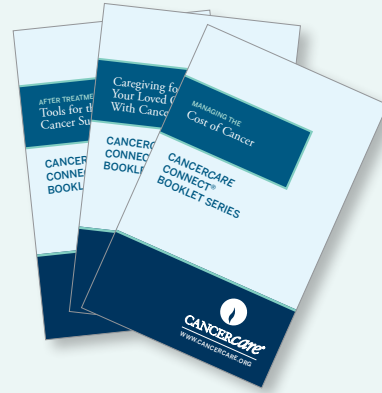
**Index of National Organizations  
 by Service Type..... 233**

**Index of National Organizations  
 by Info/Education..... 237**

**Index of National Organizations  
 by Special Populations..... 239**

## CancerCare's Publications

Knowledge is a powerful tool to help people cope with cancer. After a cancer diagnosis, many people enter an overwhelming world filled with medical jargon and confusing drug names. It's important to obtain information about a diagnosis and treatment from reliable sources. CancerCare's **easy-to-read publications** can be read instantly online, downloaded as PDFs or mailed to your home free of charge.



We offer over **300 booklets and fact sheets** about specific cancer diagnoses and cancer-related topics. Visit [cancercares.org/publications](http://cancercares.org/publications) to view all of our publications (online or as downloadable PDFs) and to access our publications order form.



## Cancer is an expensive illness. The different kinds of costs faced by people with cancer include:

### Direct medical costs

Doctors' fees, hospital charges and medication costs may or may not be covered, even if you have health insurance. For example, many people find that their insurance provides only limited coverage for prescription drugs. For people without insurance, the direct medical costs of cancer can be a serious obstacle to obtaining care.

### Related non-medical costs

These may include the cost of transportation to and from treatment, over-the-counter medications, child care, home care and medical devices or supplies. These costs are usually not covered by health insurance and must be paid out of pocket.

### Daily living expenses

Costs for food, housing, utilities and so on may suddenly be more difficult to pay if a person with cancer or a caregiver needs to stop working.

This edition of "A Helping Hand: The 2021 Resource Guide for People With Cancer" was created to help people with cancer and their loved ones cope with the costs of cancer. This booklet can guide you in understanding your options, knowing your rights and knowing who to ask for help. It will introduce you to the issues you need to consider and suggest resources that may be able to provide more in-depth advice.

To view the online version of CancerCare's A Helping Hand, visit [www.cancercares.org/helpinghand](http://www.cancercares.org/helpinghand).

This comprehensive booklet includes national and regional organizations that offer various kinds of financial and practical help to people with cancer. The listings include contact information for each organization and a description of the type of help provided. You can also see categories that tell you, at a glance, the type of help available. More information on the categories can be found on page 15.

## **A Note About Financial Assistance**

The fact that an organization is listed as providing direct financial assistance does not guarantee that funds are available. Patients may have to meet certain conditions to qualify for help. Organizations may also limit the assistance they provide depending on demand, the amount of funds available or for other reasons. In the case of organizations that provide funds for specific diagnoses, covered medical conditions may change. Always check with an organization for the most up-to-date information about its programs.

## **Tips for Taking Control of Your Finances**

**When you or a loved one has received a cancer diagnosis, money may be the last thing you want to think about, but taking control of your finances from the start may be the best way to prevent a crisis later on.**

### **Talk with your health care team about your financial situation as soon as possible.**

Most providers of cancer care understand that patients have concerns about the costs of care. A social worker or financial counselor may be able to help you understand your insurance coverage and help you find further assistance, including financial aid if you are eligible. Many providers will work with patients to set up a monthly payment plan. Some hospitals may have funds available for “charity care,” but you have to ask.

### **Let your creditors know about your financial situation.**

If you’re having trouble paying your bills, it’s best to address the problem now rather than let the bills pile up. You can often negotiate with creditors. A nonprofit credit counseling service may be able to help you work with your creditors to set up a viable payment plan.

### **Get a handle on your income and expenses.**

Figure out how much money is coming in to your household, how much you spend and what you spend it on. Contact your gas, electric, phone and/or mortgage company and ask about setting up a payment plan. Think about how your household could either earn more income or cut back on spending. Do you have money saved for an emergency? Do you have assets (a home, other property, a retirement plan, life insurance) that you can use to obtain cash?

## Understand your benefits and rights under the law.

You may have a legal right to certain benefits. A social worker can help you understand and apply for benefits you may qualify for. For example, under the federal Family and Medical Leave Act, also known as FMLA, you may be entitled to unpaid leave from your job to care for a loved one with cancer. If you leave your job or are laid off, a federal law called the Consolidated Omnibus Budget Reconciliation Act, or COBRA, may allow you to keep your health insurance coverage for up to three years.

## Make use of resources in your family, among your friends and in your community.

Family members and friends may be able to lend you money, organize a fundraiser or help you find sources of financial help in your community. Many community-based organizations offer assistance with housing and transportation and help people with disabilities apply for benefits. If you can't pay your utility bills, your community may have a Low Income Home Energy Assistance Program ([www.acf.hhs.gov/ocs/programs/liheap](http://www.acf.hhs.gov/ocs/programs/liheap)) that can help.

**Sources of Financial Assistance for People With Cancer**  
**Help with cancer costs can come from many sources. A social worker or financial counselor may be able to help you find out what assistance you may qualify for and apply for it.**

## Health insurance

If you have health insurance, it should cover many of the costs of cancer care. To obtain all the benefits you're entitled to, it's important to understand how your health insurance policy works. Review your policy to find out what it covers and what you need to do to ensure coverage for your cancer treatment. Ask your insurance company if they can assign you a case manager to help you and answer your questions.

You have the right to appeal if your health insurance company denies coverage for any aspect of your cancer care. Find out from your insurance company what you need to do to appeal a denial of coverage. If your appeal is denied, you may be able to get help from your state's insurance department. Each state has an insurance commissioner (sometimes also called a director or superintendent) whose office is responsible for regulating insurance-related laws and protecting and serving citizens. Contact your state office for consumer information, insurance rates, questions or complaints and information on obtaining insurance.

If you do not have health insurance, you can explore coverage options in your state through [www.healthcare.gov](http://www.healthcare.gov), the federal government website managed by the U.S. Centers for Medicare & Medicaid Services. It provides up-to-date information on all aspects of the Affordable Care Act (ACA) including finding insurance options by state, health insurance basics and key features of the law.

Depending on your income, you may be eligible for assistance with the cost of your monthly premiums and, in some cases, the cost of your co-payments.

Consumers can use [www.healthcare.gov](http://www.healthcare.gov) to apply, compare plans and enroll in the health care marketplace. If your state is running the marketplace where you live, this site will direct you to your state's website to apply for coverage.

You can call 800-318-2596 to get marketplace questions answered by a customer service representative 24/7. An online chat is available as well. The website also lists some community organizations where you can receive help in-person from a patient navigator.

### **Government programs**

The federal government offers several programs that provide assistance with medical and living expenses. Many of these programs (including Medicare, Medicaid and Social Security) are designed to help people who are disabled or elderly or have low incomes. Further information can be found through the Centers for Medicare & Medicaid Services ([www.cms.gov](http://www.cms.gov)) and the U.S. Social Security Administration ([www.ssa.gov](http://www.ssa.gov)). In addition, the U.S. Department of Labor provides information and eligibility requirements for more than 1,000 government-funded benefits and assistance programs through [Benefits.gov](http://Benefits.gov) ([www.benefits.gov](http://www.benefits.gov)). Many state governments also have programs to assist qualified state residents with medical and living expenses. Most government programs take time to process your application, so submit all paperwork as soon as possible. For further assistance with Medicare, you may wish to contact the nonprofit agencies Center for Medicare Advocacy ([www.medicareadvocacy.org](http://www.medicareadvocacy.org)) or the Medicare Rights Center ([www.medicarerights.org](http://www.medicarerights.org)).

### **Public and nonprofit hospitals**

Hospitals operated by state or local government and some nonprofit hospitals may provide a safety net for anyone who needs care, regardless of ability to pay. A social worker or your local health department may be able to help you find out what kind of “charity care” or “indigent care” programs are available in your community.

### **Co-pay relief programs**

Many organizations, including the CancerCare Co-Payment Assistance Foundation (<https://www.cancercare.org/copayfoundation>), help people with cancer overcome financial access and treatment barriers by assisting them with co-payments for their prescribed treatments. These organizations may also offer assistance with other expenses such as insurance premiums, deductibles and other out-of-pocket costs. Each organization offers different kinds of assistance and has its own eligibility rules. It is best to contact each organization to find out what is available.

### **Patient assistance programs**

Most pharmaceutical companies have patient assistance programs that may provide support for reimbursement issues, referrals to co-pay relief programs and help with applications for assistance. Many companies also offer medications at little or no cost to patients who qualify for assistance. Your health care team may be able to help you locate patient assistance programs for your medications. You can find an up-to-date list of programs through the Medicine Assistance Tool ([www.mat.org](http://www.mat.org)), Rx Outreach ([www.rxoutreach.org](http://www.rxoutreach.org)) and NeedyMeds ([www.needymeds.org](http://www.needymeds.org)).

### **Assistance from voluntary organizations**

Nonprofit organizations may offer assistance with practical needs such as child care, household help and transportation. Each organization offers different kinds of assistance and may have its own eligibility rules. It is best to contact each

organization to find out what is available. The master's-prepared oncology social workers at CancerCare® ([www.cancer.org](http://www.cancer.org)) can direct you to organizations in your community that provide assistance. Visit [www.cancer.org/helpinghand](http://www.cancer.org/helpinghand) to view the online version of CancerCare's Helping Hand. The Online Helping Hand is a searchable, online database of financial and practical assistance available for people with cancer. It features the most up-to-date contact information and descriptions for hundreds of national and regional organizations. The American Cancer Society ([www.cancer.org](http://www.cancer.org)) maintains a database as well.

### Fundraising

Fundraising may be an option to help pay for your cancer care. Make sure that raising funds will not disqualify you for benefits such as Medicaid or Social Security. Consult an organization that has experience raising funds for medical treatment. If you want the funds you raise to be tax-deductible for the donors, you will need to work with a tax-exempt organization. Be sure to follow Internal Revenue Service ([www.irs.gov](http://www.irs.gov)) guidelines for using tax-exempt donations.

### Personal financial planning

Consider seeking advice on your financial situation from a professional. An accountant may be able to help you save money on your income taxes. For example, you may qualify for tax credits that will reduce your taxes. If you have a lot of out-of-pocket medical expenses, you may be able to reduce your taxes by deducting some of those expenses from your income. A financial planner may be able to help you take control of your finances and plan for your financial future. Look for free or low-cost financial planning talks sponsored by organizations such as AARP ([www.aarp.org](http://www.aarp.org)) or by investment management companies.

### Finding Help in Your Community

**Organizations in your community may offer help with transportation, lodging, child care and home care—cancer costs that are rarely covered by health insurance.**

Local chapters of the American Cancer Society ([www.cancer.org](http://www.cancer.org)) may be able to provide volunteer drivers to take people to and from appointments for cancer care. They also provide an online database to search for local resources.

Several nonprofit organizations can arrange free or reduced-cost air transportation for cancer patients who are traveling to receive treatment away from home. Other voluntary organizations offer free or reduced-cost lodging for patients receiving treatment away from home.

Some organizations, including CancerCare®, can provide limited financial assistance for child care and home care. To find local resources, check to see if there is a 211 information and referral service ([www.211.org](http://www.211.org)) in your area. For older adults, the U.S. Administration on Aging provides referrals through their Eldercare Locator ([eldercare.acl.gov](http://eldercare.acl.gov); 800-677-1116). Other organizations can help populations with specific needs, such as the Coalition for the Homeless ([www.coalitionforthehomeless.org](http://www.coalitionforthehomeless.org)). Legal assistance resources can be located through LawHelp.org ([www.lawhelp.org](http://www.lawhelp.org)). Among others, these organizations can help relieve the many extra burdens associated with a cancer diagnosis.

Don't forget about the power of using your local elected officials. They often have resources and connections that can be useful. For example, if you're having difficulty with Medicaid, calling the office of your state representative might help. For a problem with Medicare, the office of your federal congressman or senator may be able to assist or offer information. Project Vote Smart ([www.votesmart.org](http://www.votesmart.org) or 888-VOTE-SMART) can provide contact information for your elected officials.

## How Advocacy Organizations Can Help

**Cancer advocacy organizations (many are listed in this guide) offer various kinds of support services for people with cancer and their loved ones.**

Many of these groups focus on helping people with specific types of cancer (e.g., breast cancer, colon cancer, lung cancer, prostate cancer). Other organizations, like CancerCare®, help people with any cancer type.

Many advocacy organizations operate throughout the country, with chapters in most states and many communities. Other organizations focus on helping people with cancer in specific communities.

Advocacy organizations may offer a variety of programs and services to assist with the costs of cancer. Social workers, case managers and patient navigators may be able to help with managing finances, understanding health insurance coverage and offering advice about benefits and rights under the law.

Some advocacy organizations such as CancerCare® may offer direct financial assistance with medical expenses or provide help with practical needs such as child care, household help and treatment-related transportation. Each organization offers different kinds of assistance and has its own eligibility rules. Funds are always limited and the amount of funding available can change. It is best to contact each organization to find out what is available.

## Notes

---

---

---

---

---

---

---

---

---

---

---

---

---

---

---

---

---

---

---

---

---

---

---



## A Quick Guide to the Categories

This edition of “A Helping Hand: The 2021 Resource Guide for People With Cancer” contains categories that tell you at a glance what types of services each organization offers.

The specific services the organization offers are listed underneath each category. For example, an organization offering financial help may provide assistance specifically for housing and lodging, meal delivery, medical supplies, prostheses and wigs:

### Financial and Practical Help

- Housing
- Lodging
- Meal Delivery
- Medical Equipment/Supplies
- Prostheses
- Wigs

(See following page for a description of the categories included in this booklet.)

## CATEGORY

### Financial and Practical Help

Provides assistance for services and/or costs associated with a cancer diagnosis. This financial assistance may include help for:

- |                           |                              |
|---------------------------|------------------------------|
| • Camps and Retreats      | • Meal Delivery              |
| • Child Care              | • Medical Equipment/Supplies |
| • Co-Payments             | • Medical Expenses           |
| • Dental                  | • Medication                 |
| • Eyeglasses              | • Nutritional Supplements    |
| • Fertility Preservation  | • Pet Care or Supplies       |
| • Financial Assistance    | • Prostheses                 |
| • Food                    | • Reconstruction             |
| • General Living Expenses | • Scholarships               |
| • Genetic Testing         | • Screening                  |
| • Hearing Aids            | • Transplants                |
| • Home Care               | • Transportation             |
| • Housing                 | • Utilities                  |
| • Insurance Premiums      | • Wigs                       |
| • Legal                   | • Wish Fulfillment           |
| • Lodging                 | • Other                      |

### Cancer Types

Details whether the organization offers assistance to people coping with any cancer diagnosis or specific diagnoses.

### Info/Education

Provides information and guidance on cancer-related matters, including:

- |                         |                     |
|-------------------------|---------------------|
| • Debt Management       | • Insurance         |
| • Entitlements/Benefits | • Legal             |
| • Fundraising           | • Patient Education |
| • Home Care             | • Referrals         |
| • Hospice               | • Other             |

### Special Populations

Provides specialized support, information and/or programs for:

- |                            |            |
|----------------------------|------------|
| • Caregivers               | • LGBTQ+   |
| • Children and Adolescents | • Bereaved |
| • Young Adults             | • Other    |
| • Siblings                 |            |

We hope that you find the resources in this guide helpful. Please consult each organization to learn more about the specific assistance and/or services offered. We have made every effort to update and confirm the names, addresses, phone numbers and websites as close to the printing date as possible. We regret any changes that may have occurred since then and are not reflected in this edition.

We have tried to include as many assistance organizations as possible, but there are many excellent groups, organizations and companies that we may not have included due to space restrictions.

Please remember that CancerCare's master's-prepared oncology social workers are available to answer your questions about financial and practical help for people with cancer. You can reach us at **800-813-HOPE (4673)** or **www.cancercares.org**.

### **A Note on the Coronavirus**

The novel coronavirus that impacted many organizations in 2020 may affect the services they can provide this year. For example, camps and retreats may still be offered virtually, rather than in person, and some groups may have reduced the scope of their programs. Please check with each organization to be clear on their most up-to-date activities.

**This chapter contains an alphabetical listing of national organizations that provide financial and practical help to people with cancer and their loved ones. Many organizations have an office in one location that serves people across the country. Others have chapters that serve people in certain areas of the country.**

**To help you find what you need, each organization has one or more categories listed to tell you what service it offers. (For a quick guide to the categories, see page 15.)**

**Please note that if an organization has a toll-free number, it is listed first. Toll-free numbers use the area codes 800, 888, 866 and 877.**

Looking for a national organization to help with a specific diagnosis or type of assistance? Please see our indices located at the end of this resource guide beginning on page 229, which include:

**Find Help by Cancer Type: 229 - 232**

**Find Help by Service Type: 233 - 236**

**Find Help by Info/Education: 237 - 238**

**Find Help by Special Population: 239 - 241**

## The Actors Fund

729 Seventh Ave.  
10th Floor  
New York, NY 10019

800-221-7303

[www.actorsfund.org](http://www.actorsfund.org)  
[info@actorsfund.org](mailto:info@actorsfund.org)

The Actors Fund helps all professionals in entertainment and the performing arts, providing a safety net with programs and services for those who are in need or going through a crisis or transition. It offers help attaining affordable housing and health insurance, financial assistance for women in a medical crisis or those disabled by illness, intensive case management, referrals, support groups and funeral and burial assistance. The Actors Fund is administered in offices in New York City, Chicago and Los Angeles.

### FINANCIAL AND PRACTICAL HELP

- General Living Expenses
- Housing
- Insurance Premiums
- Lodging
- Medical Equipment/Supplies
- Medical Expenses
- Medication
- Prostheses
- Transportation
- Wigs

### INFO/EDUCATION

- Debt Management
- Entitlements/Benefits
- Home Care
- Hospice
- Insurance
- Referrals
- Patient Education

### CANCER TYPES

- All Cancers

## Air Charity Network

877-621-7177

[www.aircharitynetwork.org](http://www.aircharitynetwork.org)

Air Charity Network provides free flights to people in need of medical treatment. Call or visit the Air Charity Network website to find the contact information for an affiliate in your area.

### FINANCIAL AND PRACTICAL HELP

- Transportation

### CANCER TYPES

- All Cancers

## Alex's Lemonade Stand Foundation

111 Presidential Blvd.  
Suite 203  
Bala Cynwyd, PA 19004

866-333-1213 (toll free)  
610-649-3034

[www.alsffamilyservices.org](http://www.alsffamilyservices.org)  
[familyservices@alexlemonade.org](mailto:familyservices@alexlemonade.org)

Alex's Lemonade Stand Foundation (ALSF) assists children with cancer and their families by funding impactful research, raising awareness, supporting families and empowering everyone to help cure childhood cancer. Their programs include help for transportation related to treatment, navigation through clinical trials and helping siblings of those with childhood cancer.

### FINANCIAL AND PRACTICAL HELP

- Financial Assistance

### INFO/EDUCATION

- Fundraising
- Patient Education
- Referrals

### SPECIAL POPULATIONS

- Children and Adolescents
- Siblings

### CANCER TYPES

- Childhood Cancers

## American Cancer Society (ACS)

250 Williams St. NW  
Atlanta, GA 30303

800-ACS-2345 (800-227-2345) (toll free)

[www.cancer.org](http://www.cancer.org)

American Cancer Society (ACS) focuses on cancer research, education and advocacy. ACS also provides patient and family services, which vary by locality, and referrals for financial assistance. Some local offices may provide additional assistance. Call to find a chapter location in your area.

### INFO/EDUCATION

- Insurance
- Patient Education
- Referrals
- Other – Clinical Trials

### SPECIAL POPULATIONS

- Children and Adolescents
- Siblings
- Young Adults

### CANCER TYPES

- All Cancers

## Andrew McDonough B+ Foundation

101 Rockland Cir.  
Wilmington, DE 19803

302-563-8389

[www.bepositive.org](http://www.bepositive.org)  
[joe@livelikeandrew.org](mailto:joe@livelikeandrew.org)

The Andrew McDonough B+ (Be Positive) Foundation is able to provide financial assistance to families of children with cancer to help with medication costs not covered by insurance, travel costs related to treatment, mortgage and rent payments, groceries and more.

### FINANCIAL AND PRACTICAL HELP

- Co-Payments
- Financial Assistance

### INFO/EDUCATION

- Patient Education

### SPECIAL POPULATIONS

- Children and Adolescents
- Young Adults

### CANCER TYPES

- Childhood Cancers

## Be the Match (National Marrow Donor Program)

500 N Fifth St.  
Minneapolis, MN 55401

888-999-6743 (toll free)

[www.bethematch.org/one-on-one](http://www.bethematch.org/one-on-one)  
[patientinfo@nmdp.org](mailto:patientinfo@nmdp.org)

Operated by the National Marrow Donor Program (NMDP), Be the Match serves patients in need of life-saving bone marrow or umbilical cord blood transplants. In addition to information and advice, they operate the Be The Match Registry, which is dedicated to helping match donors and recipients nationally.

### INFO/EDUCATION

- Fundraising
- Insurance
- Patient Education
- Referrals

### SPECIAL POPULATIONS

- Children and Adolescents
- Young Adults

### CANCER TYPES

- Leukemia
- Lymphoma
- Multiple Myeloma
- Myelodysplastic Syndrome (MDS)

## **Blood & Marrow Transplant Information Network (BMTInfoNet)**

1548 Old Skokie Rd.  
Suite 1  
Highland Park, IL 60035

888-597-7674 (toll free)  
847-433-3313

[www.bmtinfonet.org](http://www.bmtinfonet.org)  
[help@bmtinfonet.org](mailto:help@bmtinfonet.org)

The mission of BMTInfoNet is to provide emotional support and credible information to people facing a bone marrow, peripheral stem cell or cord blood transplant, so they can take a more active role in decisions affecting their health and treatment.

### **INFO/EDUCATION**

- Patient Education

### **CANCER TYPES**

- Leukemia
- Lymphoma
- Multiple Myeloma
- Myelodysplastic Syndrome (MDS)
- Solid Tumors

## **Camp Kesem**

10586 W Pico Blvd. #196  
Los Angeles, CA 90064

253-736-3821

[www.campkesem.org](http://www.campkesem.org)

Camp Kesem provides week-long, free summer camps for kids and teens ages 6-18 whose parents have or have had cancer. The focus is to provide the kids with a week free of the stress of their everyday lives, while also promoting a supportive environment to help kids cope with cancer in the family.

### **FINANCIAL AND PRACTICAL HELP**

- Camps and Retreats

### **SPECIAL POPULATIONS**

- Children and Adolescents
- Young Adults

### **CANCER TYPES**

- All Cancers

## Camp Mak-A-Dream

P.O. Box 1450  
Missoula, MT 59806

406-549-5987

[www.campdream.org](http://www.campdream.org)  
[info@campdream.org](mailto:info@campdream.org)

Camp Mak-A-Dream empowers survivors and their families to live with and beyond cancer through life-changing Montana experiences where they strengthen life skills, gain resilience and develop lasting relationships.

### FINANCIAL AND PRACTICAL HELP

- Camps and Retreats

### SPECIAL POPULATIONS

- Caregivers
- Children and Adolescents
- Young Adults
- Siblings

### CANCER TYPES

- All Cancers

## Camp Quality USA

540 Hampton Ridge Dr.  
Akron, OH 44313

330-671-0167

[www.campqualityusa.org](http://www.campqualityusa.org)

Camp Quality provides residential camping opportunities and year-round support activities to kids with cancer and their families. They have locations in Arkansas, Illinois, Louisiana, Kansas, Kentucky, Michigan, Minnesota, Missouri, Nebraska, New Jersey, Ohio, South Dakota and Texas.

### FINANCIAL AND PRACTICAL HELP

- Camps and Retreats

### SPECIAL POPULATIONS

- Children and Adolescents
- Siblings

### CANCER TYPES

- Childhood Cancers

## Cancer and Careers

159 W 25th St.  
New York, NY 10001

646-929-8032

[www.cancerandcareers.org](http://www.cancerandcareers.org)  
[cancerandcareers@cew.org](mailto:cancerandcareers@cew.org)

Cancer and Careers empowers and educates people with cancer to thrive in the workplace. Innovative programs for survivors and healthcare professionals provide the vital support, tools, and information needed to navigate the practical and legal challenges that follow a diagnosis.

### FINANCIAL AND PRACTICAL HELP

- Scholarships

### INFORMATION/EDUCATION

- Insurance
- Legal
- Patient Education
- Referrals

### CANCER TYPES

- All Cancers

## Cancer for College

28456 Old Town Front St.  
Suite 224  
Temecula, CA 92590

760-599-5096

[www.cancerforcollege.org](http://www.cancerforcollege.org)  
[info@cancerforcollege.org](mailto:info@cancerforcollege.org)

Cancer for College provides hope and inspiration by granting need-based college scholarships and educational experiences to cancer survivors. Check their website for information and timing for the application process.

### FINANCIAL AND PRACTICAL HELP

- Camps and Retreats
- Financial Assistance
- Scholarships

### SPECIAL POPULATIONS

- Young Adults

### INFO/EDUCATION

- Debt Management
- Fundraising
- Patient Education
- Referrals

### CANCER TYPES

- All Cancers



## CancerCare®

275 Seventh Ave.  
22nd Floor  
New York, NY 10001

800-813-HOPE (800-813-4673) (toll free)

[www.cancercares.org](http://www.cancercares.org)  
[info@cancercares.org](mailto:info@cancercares.org)

Founded in 1944, CancerCare® is the leading national organization providing free, professional support services and information to help people manage the emotional, practical and financial challenges of cancer. Comprehensive services include case management, counseling and support groups over the phone, online and in-person, educational workshops, publications and financial and co-payment assistance. All CancerCare services are provided by master's-prepared oncology social workers and world-leading cancer experts.

### FINANCIAL AND PRACTICAL HELP

- Home Care
- Medical Equipment/Supplies
- Medication
- Prostheses
- Transportation
- Wigs

### INFO/EDUCATION

- Entitlements/Benefits
- Home Care
- Hospice
- Insurance
- Patient Education
- Referrals

### SPECIAL POPULATIONS

- Caregivers
- Children and Adolescents
- Young Adults
- LGBTQ+
- Bereaved

### CANCER TYPES

- All Cancers

## CancerCare® Co-Payment Assistance Foundation (CCAF)

275 Seventh Ave.  
22nd Floor  
New York, NY 10001

866-55-COPAY (866-552-6729) (toll free)  
212-601-9750

[www.cancercares.org/copayfoundation](http://www.cancercares.org/copayfoundation)  
[information@cancercarescopay.org](mailto:information@cancercarescopay.org)

CancerCare's Co-Payment Assistance Foundation provides co-payment assistance for chemotherapy and targeted treatments to insured individuals who are covered by Medicare or private insurance. Patients must meet certain financial and medical criteria and must be U.S. citizens or legal residents. Covered conditions may change. Call or consult the website for updated information.

### FINANCIAL AND PRACTICAL HELP

- Co-Payments
- Medication

### INFO/EDUCATION

- Referrals

### CANCER TYPES

- Check website for covered diagnoses

## Catholic Charities USA

2050 Ballenger Ave.  
Suite 400  
Alexandria, VA 22314

703-549-1390

[www.catholiccharitiesusa.org](http://www.catholiccharitiesusa.org)  
[info@catholiccharitiesusa.org](mailto:info@catholiccharitiesusa.org)

A membership association of one of the nation's largest social service networks, Catholic Charities provides a wide range of social services to people in need nationwide regardless of their religious, social or economic backgrounds. Use the website's online locator to find local agencies, or check a local phone directory for nearest location.

### INFO/EDUCATION

- Referrals

### CANCER TYPES

- All Cancers

## Chai Lifeline

151 W 30th St., 7th Floor  
New York, NY 10001

212-465-1300

[www.chailifeline.org](http://www.chailifeline.org)  
[info@chailifeline.org](mailto:info@chailifeline.org)

Chai Lifeline's mission is to give children, families and communities the tools that they need to cope with the crises and challenges of life-threatening illnesses, disabilities and chronic diseases. Services are provided in different locations according to availability.

### FINANCIAL AND PRACTICAL HELP

- Camps and Retreats
- Meal Delivery
- Transportation

### INFO/EDUCATION

- Patient Education
- Referrals

### SPECIAL POPULATIONS

- Children and Adolescents
- Bereaved

### CANCER TYPES

- All Cancers

## Children's Brain Tumor Foundation

1460 Broadway  
New York, NY 10034

212-448-9494

[www.cbtf.org](http://www.cbtf.org)  
[info@cbtf.org](mailto:info@cbtf.org)

The Children's Brain Tumor Foundation seeks to help improve the treatment, quality of life and the long-term outlook for children and families affected by a brain or spinal cord tumor. Programs include Young Adult Career Development Program, Mentor Training Program and Teen College Readiness Program.

### FINANCIAL AND PRACTICAL HELP

- Camps and Retreats
- Scholarships

### INFO/EDUCATION

- Entitlements/Benefits
- Fundraising
- Insurance
- Patient Education
- Referrals

### SPECIAL POPULATIONS

- Children and Adolescents
- Young Adults

### CANCER TYPES

- Brain Cancer
- Childhood Cancers

## Children's Leukemia Research Association

585 Stewart Ave.  
Suite 520  
Garden City, NY 11530

212-491-1200

[www.childrensleukemia.org](http://www.childrensleukemia.org)  
[info@childrensleukemia.org](mailto:info@childrensleukemia.org)

The Children's Leukemia Research Association offers financial assistance to leukemia patients of all ages for various therapies, medical tests and prescriptions associated with leukemia. Check their website for most current list of covered treatments.

### FINANCIAL AND PRACTICAL HELP

- Financial Assistance
- Medical Expenses
- Medication

### SPECIAL POPULATIONS

- Children and Adolescents
- Young Adults

### CANCER TYPE

- Childhood Cancers
- Leukemia

## Children's Organ Transplant Association (COTA)

2501 W COTA Dr.  
Bloomington, IN 47403

800-366-2682 (toll free)

[www.cota.org](http://www.cota.org)  
[cota@cota.org](mailto:cota@cota.org)

The Children's Organ Transplant Association provides fundraising assistance for children and young adults needing life-saving transplants and promotes organ, marrow and tissue donation. COTA also coordinates local campaign development, provides advocates to assist local volunteers and negotiates directly with transplant centers on financial issues.

### INFO/EDUCATION

- Fundraising
- Insurance

### SPECIAL POPULATIONS

- Children and Adolescents
- Young Adults

### CANCER TYPES

- All Cancers
- Childhood Cancers

## Colorectal Cancer Alliance

1025 Vermont Ave. NW  
Suite 1066  
Washington, DC 20005

877-422-2030 (toll free)  
202-628-0123

[www.ccalliance.org](http://www.ccalliance.org)  
[info@ccalliance.org](mailto:info@ccalliance.org)

The Colorectal Cancer Alliance helps those patients with colon and rectal cancers and their families with the financial costs of screening and other treatment related expenses. They also seek to raise awareness of preventive measures and inspire efforts to fund critical research.

### FINANCIAL AND PRACTICAL HELP

- Financial Assistance

### INFO/EDUCATION

- Patient Education
- Referrals

### CANCER TYPE

- Colorectal Cancer

## Dental Lifeline Network

1800 15th St.  
Suite 100  
Denver, CO 80202

303-534-5360

[dentallifeline.org](http://dentallifeline.org)

Dental Lifeline Network is dedicated to improving the oral health of people with disabilities or who are elderly or medically fragile and have no other way to get help. They have programs involving donated dental and orthodontic services for those who qualify. Please see their website for details.

### FINANCIAL AND PRACTICAL HELP

- Dental

### INFO/EDUCATION

- Patient Education
- Referrals

### CANCER TYPES

- All Cancers

## The Dougy Center

P.O. Box 86852  
Portland, OR 97286

503-775-5683

[dougy.org](http://dougy.org)  
[help@dougy.org](mailto:help@dougy.org)

The Dougy Center provides a safe place for children, teens, young adults and families who are grieving a death or living with an advanced serious illness to share their experiences.

### INFO/EDUCATION

- Referrals

### SPECIAL POPULATIONS

- Caregivers
- Children and Adolescents
- Young Adults
- Siblings
- Bereaved

### CANCER TYPES

- All Cancers

## Expect Miracles Foundation

89 South St.  
Suite 700  
Boston, MA 02111

617-391-9235

[www.expectmiraclesfoundation.org](http://www.expectmiraclesfoundation.org)  
[info@expectmiraclesfoundation.org](mailto:info@expectmiraclesfoundation.org)

The Expect Miracles Foundation is committed to helping caregivers and those with a cancer survive the financial toxicity of cancer and its treatment. They offer a number of grants, in addition to guidance in building family support, legal matters, work and lifestyle resources and means for paying for undergraduate studies.

### FINANCIAL AND PRACTICAL HELP

- Financial Assistance

### INFO/EDUCATION

- Legal
- Patient Education

### SPECIAL POPULATIONS

- Caregivers
- Young Adults

### CANCER TYPES

- All Cancers

## Family Reach

142 Berkeley St.  
Boston, MA 02116

857-233-2764

[familyreach.org](http://familyreach.org)

Family Reach is a financial lifeline for families fighting cancer. Family Reach offers financial education, financial planning and financial assistance to families affected by cancer. Family Reach Navigators partner with a patient's social worker to identify the most impactful financial intervention for each family. Assistance is available on a limited basis and helps cover costs like mortgage/rent, utilities and transportation.

### FINANCIAL AND PRACTICAL HELP

- Financial Assistance

### INFO/EDUCATION

- Financial Education

### SPECIAL POPULATIONS

- Children and Adolescents
- Young Adults

### CANCER TYPES

- All Cancers

## First Descents

3001 Brighton Blvd.  
Suite 623  
Denver, CO 80216

303-945-2490

[www.firstdescents.org](http://www.firstdescents.org)  
[info@firstdescents.org](mailto:info@firstdescents.org)

First Descents provides week-long outdoor adventure camps for young adults with cancer (ages 18-39). Programs are all about having fun, getting outside and pushing your limits through kayaking, rock climbing and other outdoor activities.

### FINANCIAL AND PRACTICAL HELP

- Camps and Retreats

### SPECIAL POPULATIONS

- Young Adults

### CANCER TYPES

- All Cancers

## GO2 Foundation for Lung Cancer

1700 K St. NW  
Suite 660  
Washington, DC 20006

800-298-2436 (toll free)  
202-463-2080

[www.go2foundation.org](http://www.go2foundation.org)  
[support@go2foundation.org](mailto:support@go2foundation.org)

Founded by patients and survivors, GO2 Foundation for Lung Cancer assists in peer-matching, navigation treatment and clinical trial options, among an assortment of other education and outreach services.

### INFO/EDUCATION

- Patient Education
- Referrals

### CANCER TYPES

- Lung Cancer

## Good Days

2611 Internet Blvd.  
Suite 105  
Frisco, TX 75034

877-968-7233 (toll free)  
972-608-7141

[www.mygooddays.org](http://www.mygooddays.org)  
[info@mygooddays.org](mailto:info@mygooddays.org)

Good Days provides financial assistance to underinsured patients diagnosed with chronic or life-altering diseases that require the use of specialty therapeutics. Please call or visit the website for the most up-to-date list of covered conditions.

### FINANCIAL AND PRACTICAL HELP

- Co-Payments
- Financial Assistance
- Insurance Premiums

### CANCER TYPES

- Check website for covered diagnoses

## HealthWell Foundation

20440 Century Blvd.  
Suite 250  
Germantown, MD 20874

800-675-8416 (toll free)

[www.healthwellfoundation.org](http://www.healthwellfoundation.org)  
[grants@healthwellfoundation.org](mailto:grants@healthwellfoundation.org)

HealthWell Foundation addresses the needs of individuals who cannot afford their insurance premiums, co-payments, co-insurance and other out-of-pocket health care costs. Check the website or call for an updated list of covered conditions. Eligibility is based on the patient's financial, medical and insurance situation.

### FINANCIAL AND PRACTICAL HELP

- Co-Payments
- Insurance Premiums
- Transportation

### SPECIAL POPULATIONS

- Children and Adolescents

### CANCER TYPES

- Check website for covered diagnoses



## Imerman Angels

205 W Randolph, 19th Floor  
Chicago, IL 60606

866-463-7626 (toll free)

[imermanangels.org](http://imermanangels.org)  
[info@imermanangels.org](mailto:info@imermanangels.org)

Imerman Angels provides personalized connections that enable one-on-one support among cancer fighters, survivors and caregivers. In addition to support in English and Spanish, they have Ambassadors in many countries that help support a variety of other languages.

### SPECIAL POPULATIONS

- Caregivers
- Bereaved

### CANCER TYPES

- All Cancers

## Joe's House

877-563-7468 (toll free)

[www.joeshouse.org](http://www.joeshouse.org)  
[info@joeshouse.org](mailto:info@joeshouse.org)

Joe's House is a lodging resource for cancer patients who must travel for treatment. The Joe's House online directory lists over 2,000 discounted lodging options near hospitals and cancer treatment centers that cater to patients, family members and caregivers across the country. The website lists all types of lodging including free nonprofit lodging, discounted hotels, home share programs and more.

### INFO/EDUCATION

- Lodging

### SPECIAL POPULATIONS

- Caregivers

### CANCER TYPES

- All Cancers

## The Leukemia & Lymphoma Society (LLS)

3 International Dr.  
Suite 200  
Rye Brook, NY 10573

888-557-7177 (toll free)

[www.lls.org](http://www.lls.org)  
[infocenter@lls.org](mailto:infocenter@lls.org)

The Leukemia & Lymphoma Society (LLS) provides free information, education and support services for those who are impacted by blood cancer and helps fight for lifesaving policy changes at the state and federal level to ensure access to quality, affordable, coordinated care.

### FINANCIAL AND PRACTICAL HELP

- Financial Assistance
- Insurance Premiums
- Medical Expenses

### INFO/EDUCATION

- Fundraising
- Patient Education
- Referrals

### SPECIAL POPULATIONS

- Children and Adolescents
- Young Adults

### CANCER TYPES

- Leukemia
- Lymphoma
- Multiple Myeloma
- Myelodysplastic Syndrome (MDS)
- Myeloproliferative Neoplasms
- Waldenstrom's Macroglobulinemia
- Any Blood Cancer

## The Leukemia & Lymphoma Society Co-Pay Assistance Program

P.O. Box 12268  
Newport News, VA 23612

877-557-2672 (toll free)

[www.lls.org/copay](http://www.lls.org/copay)  
[financialassistance@lls.org](mailto:financialassistance@lls.org)

The Leukemia & Lymphoma Society Co-Pay Assistance Program is able to help patients meet their health insurance, Medicare Part B or D, Medicare Supplement or Medicare Advantage premiums or drug co-payment obligations. Patients must meet household income requirements as described on the website.

### FINANCIAL AND PRACTICAL HELP

- Co-Payments
- Insurance Premiums
- Medication

### SPECIAL POPULATIONS

- Children and Adolescents
- Young Adults

### CANCER TYPES

- Check website for covered diagnoses

## **LIVESTRONG Fertility**

623 W 38th St.  
Suite 300  
Austin, TX 78705

855-220-7777 (toll free)

[www.livestrong.org/we-can-help/livestrong-fertility](http://www.livestrong.org/we-can-help/livestrong-fertility)  
[livestrong@livestrong.org](mailto:livestrong@livestrong.org)

LIVESTRONG Fertility is dedicated to providing reproductive information, support and hope to cancer patients and survivors whose medical treatments present the risk of infertility.

### **FINANCIAL AND PRACTICAL HELP**

- Fertility Preservation

### **SPECIAL POPULATIONS**

- Young Adults

### **INFO/EDUCATION**

- Insurance
- Legal
- Patient Education
- Referrals

### **CANCER TYPES**

- All Cancers

## **Locks of Love**

234 Southern Blvd.  
West Palm Beach, FL 33405

888-896-1588 (toll free)  
561-833-7332

[www.locksoflove.org](http://www.locksoflove.org)  
[info@locksoflove.org](mailto:info@locksoflove.org)

Locks of Love's mission is to provide hairpieces to financially disadvantaged children under the age of 21 who are experiencing long-term medical hair loss from any diagnosis.

### **FINANCIAL AND PRACTICAL HELP**

- Protheses
- Wigs

### **SPECIAL POPULATIONS**

- Children and Adolescents

### **CANCER TYPES**

- All Cancers

## Lymphoma Research Foundation (LRF)

Wall Street Plaza  
88 Pine St.  
Suite 2400  
New York, NY 10005

800-500-9976 (toll free)  
212-349-2910

[www.lymphoma.org](http://www.lymphoma.org)  
[helpline@lymphoma.org](mailto:helpline@lymphoma.org)

The Lymphoma Research Foundation (LRF) raises money for lymphoma medical research and provides support and education for lymphoma patients and their families. Services include a patient-to-patient network, library, e-newsletter and limited financial assistance for treatment-related expenses based on availability of funds.

### FINANCIAL AND PRACTICAL HELP

- Financial Assistance
- Medical Expenses

### INFO/EDUCATION

- Patient Education
- Referrals

### SPECIAL POPULATIONS

- Children and Adolescents
- Young Adults

### CANCER TYPE

- Lymphoma

## Malecare

85 Delancy St. (The Yard)  
New York, NY 10002

212-673-4920

[malecare.org](http://malecare.org)  
[info@malecare.org](mailto:info@malecare.org)

Malecare is dedicated to helping men deal with and overcome the many issues surrounding the diagnoses of cancer, with a focus on prostate and male breast cancer. They strive to meet the needs of underserved populations, including the gay community and minorities, and seek to supply education and fundraising opportunities for those afflicted.

### INFO/EDUCATION

- Patient Education

### SPECIAL POPULATIONS

- LGBTQ+

### CANCER TYPES

- Breast Cancer
- Prostate Cancer

## Meals on Wheels America

1550 Crystal Dr.  
Suite 1004  
Arlington, VA 22202

888-998-6325 (toll free)  
703-548-5558

[www.mealsonwheelsamerica.org](http://www.mealsonwheelsamerica.org)  
[info@mealsonwheelsamerica.org](mailto:info@mealsonwheelsamerica.org)

Meals on Wheels America empowers local community programs to improve the health and quality of life of the seniors they serve so that no one is left hungry or isolated. The Meals on Wheels website contains a national database to find a location near you.

### FINANCIAL AND PRACTICAL HELP

- Meal Delivery

### CANCER TYPES

- All Cancers

## Mercy Medical Angels

4620 Haygood Rd.  
Suite 1  
Virginia Beach, VA 23455

800-296-1217 (toll free)

[www.mercymedical.org](http://www.mercymedical.org)

Mercy Medical Angels provides information about all forms of charitable, long-distance medical air transportation and provides referrals to all appropriate sources of help available in the national charitable medical air transportation network.

### INFO/EDUCATION

- Referrals

### CANCER TYPES

- All Cancers

## Meredith's Miracles Colon Cancer Foundation

905 Star Gaze Dr.  
Lexington, KY 40509

[www.merediths-miracles.org](http://www.merediths-miracles.org)  
[info@merediths-miracles.org](mailto:info@merediths-miracles.org)

Meredith's Miracles Colon Cancer Foundation provides financial support to young adults (age 40 and under) undergoing treatment for colon cancer. Specifically, the organization provides relief from living expenses during treatment rather than expenses associated with treatment. Funds may be limited so call to check availability.

### FINANCIAL AND PRACTICAL HELP

- General Living Expenses
- Medication
- Prostheses
- Wigs

### SPECIAL POPULATIONS

- Young Adults

### CANCER TYPE

- Colorectal Cancer

## Mesothelioma Applied Research Foundation

1615 L St. NW  
Suite 430  
Washington, DC 20036

703-879-3797

[curemeso.org](http://curemeso.org)  
[info@curemeso.org](mailto:info@curemeso.org)

The Mesothelioma Applied Research Foundation is dedicated to ending mesothelioma through research, education, support and advocacy. By way of a travel grant program, they assist those who are seeking an initial consultation with an expert on mesothelioma or are enrolled in a clinical trial. The program aims to offset costs associated with travel to consults or trial visits.

### FINANCIAL AND PRACTICAL HELP

- Financial Assistance

### INFO/EDUCATION

- Patient Education
- Referrals

### CANCER TYPES

- Mesothelioma

## Miracle Flights

5740 S Eastern Ave.  
Suite 240  
Las Vegas, NV 89119

800-359-1711 (toll free)

[www.miracleflights.org](http://www.miracleflights.org)  
[info@miracleflights.org](mailto:info@miracleflights.org)

Miracle Flights provides free air transportation to and from medical treatment facilities for children and adults with life-threatening illnesses. Families must meet income guidelines and patients must be stable to fly on commercial flights.

### FINANCIAL AND PRACTICAL HELP

- Transportation

### SPECIAL POPULATIONS

- Children and Adolescents
- Young Adults

### CANCER TYPES

- All Cancers

## Myriad Cares Financial Assistance Program

320 Wakara Way  
Salt Lake City, UT 84108

800-469-7423 (toll free)

[myriad.com/about-myriad/myriad-cares-2/financial-assistance-program/](http://myriad.com/about-myriad/myriad-cares-2/financial-assistance-program/)

Myriad currently offers numerous genetic tests and co-pay assistance to insured patients. They can provide testing for their services at no charge for uninsured patients who meet specific medical and financial criteria. Check website for most current list of available tests.

### FINANCIAL AND PRACTICAL HELP

- Genetic Testing

### INFO/EDUCATION

- Patient Education

### CANCER TYPES

- Check website for current list of available tests

## National Breast and Cervical Cancer Early Detection Program

Centers for Disease Control and Prevention  
1600 Clifton Rd.  
Atlanta, GA 30329

800-CDC-INFO (800-232-4636) (toll free)

[www.cdc.gov/cancer/nbccedp](http://www.cdc.gov/cancer/nbccedp)

The National Breast and Cervical Cancer Early Detection Program provides free or low-cost access to breast and cervical cancer screening services for underserved women in the United States including the District of Columbia, six U.S. territories and 13 American Indian/Alaska Native tribes or tribal organizations.

### FINANCIAL AND PRACTICAL HELP

- Medical Expenses
- Screening

### INFO/EDUCATION

- Patient Education
- Referrals

### CANCER TYPES

- Breast Cancer
- Cervical Cancer

## The National Children's Cancer Society (NCCS)

500 N Broadway  
Suite 1850  
St. Louis, MO 63102

800-5-FAMILY (toll free)  
314-241-1600

[www.thenccs.org](http://www.thenccs.org)

The mission of the NCCS is to improve the quality of life for children with cancer and their families worldwide. It serves as a financial, emotional and educational resource for those in need at every stage of illness and recovery. In the United States, the NCCS eases the financial burdens that accompany major illness, gives crucial support and addresses the challenges of survivorship. Abroad, it provides life-saving pharmaceutical drugs and medical supplies to facilities that treat children with cancer.

### FINANCIAL AND PRACTICAL HELP

- Financial Assistance
- Scholarships

### INFO/EDUCATION

- Patient Education
- Referrals

### SPECIAL POPULATIONS

- Children and Adolescents
- Young Adults

### CANCER TYPES

- Childhood Cancers



## National Foundation for Transplants

3429 W Sarazens Cir.  
Suite 100  
Memphis, TN 38125

800-489-3863 (toll free)

[www.transplants.org](http://www.transplants.org)  
[info@transplants.org](mailto:info@transplants.org)

The National Foundation for Transplants helps organ and transplant candidates and recipients overcome the financial challenges associated with transplantation. NFT offers assistance through fundraising and grant programs for transplant-related costs not covered by public or private insurance.

### FINANCIAL AND PRACTICAL HELP

- Financial Assistance

### INFO/EDUCATION

- Fundraising
- Referrals

### CANCER TYPES

- All Cancers

## National LGBT Cancer Network

11 S Angell St.  
Suite 377  
Providence, RI 02906

212-675-2633

[www.cancer-network.org](http://www.cancer-network.org)  
[info@cancer-network.org](mailto:info@cancer-network.org)

The National LGBT Cancer Network addresses the needs of LGBT people with and at risk of cancer through education about increased cancer risks and the importance of screening and early detection. They also work to train healthcare providers to offer more safe, welcoming and culturally competent care to their LGBT patients while advocating for LGBT inclusion in national cancer organizations, research and the media.

### INFO/EDUCATION

- Patient Education
- Referrals

### SPECIAL POPULATIONS

- LGBTQ+

### CANCER TYPES

- All Cancers

## National Organization for Rare Disorders (NORD)

55 Kenosia Ave.  
Danbury, CT 06810

800-999-6673 (toll free)  
844-259-7178 (Spanish) (toll free)

[www.rarediseases.org](http://www.rarediseases.org)

NORD helps newly diagnosed cancer patients connect with others who have undergone the same or similar experiences. NORD provides assistance programs, including free drug and co-pay assistance for specific rare diseases. Covered conditions may change but are listed on the website.

### FINANCIAL AND PRACTICAL HELP

- Co-Payments
- Financial Assistance
- Insurance Premiums
- Medical Expenses

### INFO/EDUCATION

- Patient Education

### CANCER TYPES

- Rare Cancers
- Check website for covered diagnoses

## National Volunteer Transportation Center

1341 G St. NW  
Suite 250  
Washington, DC 20005

212-247-8356

[ctaa.org/national-volunteer-transportation-center](http://ctaa.org/national-volunteer-transportation-center)  
[dickson@ctaa.org](mailto:dickson@ctaa.org)

The purpose of the National Volunteer Transportation Center is to promote and support the concept and practice of volunteer transportation, which includes volunteer driver programs, shared vehicle utilization and ride sharing initiatives.

### FINANCIAL AND PRACTICAL HELP

- Transportation

### CANCER TYPES

- All Cancers

## Network of Jewish Human Service Agencies

50 Eisenhower Dr.  
Suite 100  
Paramus, NJ 07652

201-977-2400

[www.networkjhsa.org](http://www.networkjhsa.org)  
[info@networkjhsa.org](mailto:info@networkjhsa.org)

The Network of Jewish Human Service Agencies is an international membership association of more than 140 nonprofit human service agencies that factor into advocacy, best practices, innovation, research, partnerships and collaboration on a range of health issues and beyond. The Network strengthens agencies so they can better serve their communities.

### INFO/EDUCATION

- Referrals

### CANCER TYPES

- All Cancers

## New Eyes for the Needy

549 Millburn Ave.  
Short Hills, NJ 07078

973-376-4903

[www.new-eyes.org](http://www.new-eyes.org)  
[info@new-eyes.org](mailto:info@new-eyes.org)

New Eyes for the Needy provides basic prescription eyeglasses for those in need, provided income requirements. Applicants must have a recent eyeglass prescription dated within the last twelve months and applications are judged in terms of means, not level of illness or other considerations.

### FINANCIAL AND PRACTICAL HELP

- Eyeglasses

### CANCER TYPES

- All Cancers

## The Oncofertility Consortium

303 E Superior St.  
Suite 10-121  
Chicago, IL 60611

866-708-FERT (3378) (toll free)

[www.oncofertility.northwestern.edu](http://www.oncofertility.northwestern.edu)  
[oncofertility@northwestern.edu](mailto:oncofertility@northwestern.edu)

The Oncofertility Consortium is an international, interdisciplinary initiative designed to address the complex health care and quality-of-life issues that concern cancer patients whose fertility may be threatened by the incidence of cancer and its treatment.

### FINANCIAL AND PRACTICAL HELP

- Fertility Preservation

### INFO/EDUCATION

- Patient Education

### SPECIAL POPULATIONS

- Young Adults

### CANCER TYPES

- All Cancers

## Osto Group

3500 45th St.  
Suite 16A  
West Palm Beach, FL 33407

877-678-6690 (toll free)

[www.ostogroup.org](http://www.ostogroup.org)  
[mgrace@ostogroup.org](mailto:mgrace@ostogroup.org)

Osto Group is a long-term resource for low-cost ostomy supplies for the uninsured or those with insurance whose policies have a very high deductible or an omission for ostomy supplies.

### FINANCIAL AND PRACTICAL HELP

- Medical Equipment/Supplies

### CANCER TYPES

- All Cancers

## Ovarcome

2525 Robinhood St.  
Suite 212  
Houston, TX 77005

[www.ovarcome.org](http://www.ovarcome.org)  
[info@ovarcome.org](mailto:info@ovarcome.org)

Ovarcome's mission is to raise global awareness of ovarian cancer, fund research for a cure and provide financial support to underserved ovarian cancer patients in need. These forms of financial assistance include a small stipend and funds for gas and groceries. They also provide optional counseling sessions.

### FINANCIAL AND PRACTICAL HELP

- Financial Assistance

### INFO/EDUCATION

- Patient Education

### CANCER TYPES

- Ovarian Cancer

## Patient Access Network (PAN) Foundation

P.O. Box 30500  
Bethesda, MD 20824

866-316-7263 (toll free)

[www.panfoundation.org](http://www.panfoundation.org)  
[info@panfoundation.org](mailto:info@panfoundation.org)

Patient Access Network (PAN) Foundation provides co-payment assistance to patients who have insurance but lack the means to pay for out-of-pocket costs for their medications or infusions. PAN currently includes coverage for numerous disease funds, including various cancers and related illnesses. Call or visit website for most up-to-date list of covered conditions.

### FINANCIAL AND PRACTICAL HELP

- Co-Payments
- Insurance Premiums

### INFO/EDUCATION

- Patient Education

### CANCER TYPES

- Check website for covered diagnoses

## Patient Advocate Foundation (PAF)

421 Butler Farm Rd.  
Hampton, VA 23666

800-532-5274 (toll free)

[www.patientadvocate.org](http://www.patientadvocate.org)  
[help@patientadvocate.org](mailto:help@patientadvocate.org)

The mission of PAF is to provide effective mediation and arbitration services to patients against the obstacles to health care, whether during a medical debt crisis or during insurance employment issues for patients with chronic, debilitating and life-threatening illnesses.

### FINANCIAL AND PRACTICAL HELP

- Financial Assistance
- Medical Expenses
- Scholarships

### INFO/EDUCATION

- Debt Management
- Entitlements/Benefits
- Home Care
- Hospice
- Insurance
- Legal
- Patient Education
- Referrals

### CANCER TYPES

- All Cancers

## Patient Advocate Foundation Co-Pay Relief Program (PAF CPR)

421 Butler Farm Rd.  
Hampton, VA 23666

866-512-3861 (toll free)

[www.copays.org](http://www.copays.org)

PAF CPR provides direct co-payment assistance for pharmaceutical products to insured patients, including Medicare Part D beneficiaries, who qualify financially and medically. The website lists covered cancer diagnoses.

### FINANCIAL AND PRACTICAL HELP

- Co-Payments

### INFO/EDUCATION

- Debt Management

### CANCER TYPES

- Check website for covered diagnoses

## Patient Airlift Services (PALS)

7110 Republic Airport  
Suite 202  
Farmingdale, NY 11735

888-818-1231 (toll free)  
631-694-PALS (7257)

[www.palservices.org](http://www.palservices.org)  
[info@palservices.org](mailto:info@palservices.org)

PALS arranges free air transportation for individuals requiring medical diagnosis, treatment or follow-up who cannot afford or are unable to fly commercially. They also arrange volunteer flights for family members of patients as compassionate missions to ensure patients have support when they are away from home for long periods.

### FINANCIAL AND PRACTICAL HELP

- Transportation

### SPECIAL POPULATIONS

- Caregivers
- Siblings

### CANCER TYPES

- All Cancers

## Patient Services, Inc. (PSI)

P.O. Box 5930  
Midlothian, VA 23112

800-366-7741 (toll free)

[www.patientservicesinc.org](http://www.patientservicesinc.org)

PSI provides peace of mind to patients living with specific chronic illnesses by locating health insurance in all 50 states, subsidizing the cost of health insurance premiums, providing pharmacy and treatment co-payment assistance, assisting with Medicare Part D co-insurance and helping with advocacy for Social Security Disability. Covered conditions change so please check the website for most up-to-date list.

### FINANCIAL AND PRACTICAL HELP

- Co-Payments
- Financial Assistance
- Insurance Premiums
- Medical Expenses

### INFO/EDUCATION

- Entitlements/Benefits
- Insurance
- Legal
- Patient Education

### CANCER TYPES

- Check website for covered diagnoses

## Pediatric Brain Tumor Foundation

302 Ridgefield Ct.  
Asheville, NC 28806

800-253-6530 x306 (toll free)  
213-248-9262

[www.curethekids.org](http://www.curethekids.org)

The Pediatric Brain Tumor Foundation offers emergency financial assistance, college and vocational scholarships and a range of practical services to those affected by pediatric brain cancer diagnoses. Regions across the country provide on-the-ground support to families and partner with community leaders to raise awareness and funds for lifesaving research and family resources.

### FINANCIAL AND PRACTICAL HELP

- Camps and Retreats
- Financial Assistance
- Lodging
- Scholarships

### INFO/EDUCATION

- Patient Education

### SPECIAL POPULATIONS

- Children and Adolescents
- Young Adults

### CANCER TYPES

- Brain Cancer
- Childhood Cancers

## The Pink Fund

P.O. Box 603  
Bloomfield Hills, MI 48303

[pinkfund.org](http://pinkfund.org)  
[info@thepinkfund.org](mailto:info@thepinkfund.org)

The Pink Fund provides financial support to help meet the basic needs and decrease stress levels of breast cancer patients in active treatment to allow them to focus on healing and improve survivorship outcomes. Funds for critical expenses in housing, transportation, utilities and insurance are available. To be eligible, the patient must be actively be undergoing treatment, must have been working at the time of the diagnosis and meet income requirements.

### FINANCIAL AND PRACTICAL HELP

- Financial Assistance
- Insurance Premiums

### CANCER TYPES

- Breast Cancer



## Pinky Swear Foundation

5555 W 78th St.  
Suite E  
Edina, MN 55439

952-225-1665

[www.pinkyswear.org](http://www.pinkyswear.org)  
[karen.svendsen@pinkyswear.org](mailto:karen.svendsen@pinkyswear.org)

The Pinky Swear Foundation supports children who are in active treatment and under the age of 21 (if 18-20, they must be living with their parents). Families or social workers can apply on their behalf. One-time financial gifts are available along with assistance for rent, mortgage, auto payments, gas and groceries.

### FINANCIAL AND PRACTICAL HELP

- Financial Assistance

### SPECIAL POPULATIONS

- Children and Adolescents

### CANCER TYPES

- All Cancers

## Ronald McDonald House Charities

110 N Carpenter St.  
Chicago, IL 60607

630-623-7048

[www.rmhc.org](http://www.rmhc.org)  
[info@rmhc.org](mailto:info@rmhc.org)

Ronald McDonald House consists of three core programs: Ronald McDonald Houses, which provide lodging for families of seriously ill children receiving treatment at nearby hospitals; Ronald McDonald Family Rooms in hospitals, which serve as places to escape stress and tension; and Ronald McDonald Care Mobiles, which bring cost-effective medical, dental and health education services directly to underserved children in both rural and urban areas.

### FINANCIAL AND PRACTICAL HELP

- Camps and Retreats
- Dental
- Lodging
- Transportation

### INFO/EDUCATION

- Patient Education

### SPECIAL POPULATIONS

- Children and Adolescents
- Young Adults

### CANCER TYPES

- All Cancers

## Sarcoma Alliance

775 Blithedale Ave., #334  
Mill Valley, CA 94941

415-381-7236

[www.sarcomaalliance.org](http://www.sarcomaalliance.org)  
[info@sarcomaalliance.org](mailto:info@sarcomaalliance.org)

Sarcoma Alliance is dedicated to extending and improving the lives of sarcoma patients through accurate diagnosis, improved access to care, education and support. They are able to provide financial assistance specifically for second opinion consultations by reimbursing travel expenses, phone bills, evaluation costs and other directly related charges.

### FINANCIAL AND PRACTICAL HELP

- Financial Assistance
- Medical Expenses

### INFO/EDUCATION

- Insurance
- Patient Education
- Referrals

### CANCER TYPES

- Sarcoma

## SHARE

165 W 46th St.  
Suite 712  
New York, NY 10036

844-275-7427 (toll free)  
212-719-0364

[www.sharecancersupport.org](http://www.sharecancersupport.org)  
[info@sharecancersupport.org](mailto:info@sharecancersupport.org)

SHARE is a national nonprofit that supports, educates and empowers women affected by breast, ovarian or metastatic breast cancer, with a special focus on medically underserved communities. Their mission is to connect these women with peers who understand what they're going through, creating a community where no one has to face breast or ovarian cancer alone.

### INFO/EDUCATION

- Patient Education

### CANCER TYPES

- Breast Cancer
- Ovarian Cancer

## Sibling Support Project

16120 NE Eighth St.  
Bellevue, WA 98008

425-362-6421

[www.siblingsupport.org](http://www.siblingsupport.org)  
[info@siblingsupport.org](mailto:info@siblingsupport.org)

The Sibling Support Project is the first national program in the U.S. dedicated to the life-long and ever-changing concerns of millions of brothers and sisters of people with special health, developmental and mental health needs. Through books and publications, online communities, Sibshops, workshops and training, they support and promote siblings' well-being as individuals and as valuable members of their families.

### INFO/EDUCATION

- Patient Education

### SPECIAL POPULATIONS

- Siblings

### CANCER TYPES

- All Cancers

## Smiles for Sophie Forever

31722 Leeward Ct.  
Avon Lake, OH 44012

[www.sfsf.org](http://www.sfsf.org)  
[info@smilesforsophieforever.org](mailto:info@smilesforsophieforever.org)

Smiles for Sophie Forever is dedicated to providing support for families with children with brain cancer. In addition to supporting local organizations, they are able to give assistance by way of a family grant to those in similar circumstances. Eligibility requirements and applications can be found on the website.

### FINANCIAL AND PRACTICAL HELP

- Financial Assistance

### SPECIAL POPULATIONS

- Children and Adolescents

### CANCER TYPES

- Brain Cancer
- Childhood Cancers

## Starkey Hearing Foundation

6801 Washington Ave. S  
Suite 200  
Minneapolis, MN 55439

800-328-8602 (toll free)

[www.starkeyhearingfoundation.org](http://www.starkeyhearingfoundation.org)  
[hearnow@starkey.com](mailto:hearnow@starkey.com)

The Starkey Hearing Foundation provides hearing aids to low income individuals who have no other resources to acquire hearing aids. Eligibility requirements can be found on their website.

### FINANCIAL AND PRACTICAL HELP

- Hearing Aids

### CANCER TYPES

- All Cancers

## Stupid Cancer

40 Worth St.  
Suite 808  
New York, NY 10013

877-735-4673 (toll free)  
212-619-1040

[www.stupidcancer.org](http://www.stupidcancer.org)  
[contact@stupidcancer.org](mailto:contact@stupidcancer.org)

Stupid Cancer is the leader in young adult cancer advocacy, research and support, seeking to create shared experiences by producing life-changing events and digital content to end isolation, build community, provide education and foster meaningful relationships that last a lifetime. Their mission is to empower, support and improve health outcomes for the young adult cancer community.

### FINANCIAL AND PRACTICAL HELP

- Camps and Retreats

### INFO/EDUCATION

- Patient Education

### SPECIAL POPULATIONS

- Young Adults

### CANCER TYPES

- All Cancers

## Sunshine Kids

2814 Virginia St.  
Houston, TX 77098

713-524-1264

[www.sunshinekids.org](http://www.sunshinekids.org)  
[info@sunshinekids.org](mailto:info@sunshinekids.org)

The Sunshine Kids Foundation adds quality of life to children with cancer by providing them with exciting, positive group activities, so they may once again do what kids are meant to do, have fun and celebrate life.

### FINANCIAL AND PRACTICAL HELP

- Camps and Retreats

### SPECIAL POPULATIONS

- Children and Adolescents

### CANCER TYPES

- Childhood Cancers

## Support for People with Oral and Head and Neck Cancer (SPONHC)

P.O. Box 53  
Locust Valley, NY 11560

800-377-0928 (toll free)

[www.spohnc.org](http://www.spohnc.org)  
[info@spohnc.org](mailto:info@spohnc.org)

SPONHC provides a wealth of information resources to those affected by Oral and Head and Neck Cancers. Newsletters and special publications include information about diagnosis and management, emotional support, oral care, rehabilitation, research, therapies, nutrition and insurance.

### INFO/EDUCATION

- Patient Education

### CANCER TYPES

- Head and Neck Cancer

## Survivorship A to Z

353 W 56th St., #9N  
New York, NY 10019

[www.survivorshipatoz.org/cancer](http://www.survivorshipatoz.org/cancer)

Survivorship A to Z provides a comprehensive interactive website for people with cancer. The website provides information on insurance, government benefits, managing finances, employment issues, planning ahead, medical concerns, day-to-day living and emotional well-being.

### INFO/EDUCATION

- Debt Management
- Entitlements/Benefits
- Fundraising
- Home Care
- Hospice
- Insurance
- Legal
- Patient Education
- Referrals

### CANCER TYPES

- All Cancers

## Tigerlily Foundation

42020 Village Center Plaza  
Suite 120-156  
Stone Ridge, VA 20105

888-580-6253 (toll free)

[www.tigerlilyfoundation.org](http://www.tigerlilyfoundation.org)  
[info@tigerlilyfoundation.org](mailto:info@tigerlilyfoundation.org)

Tigerlily Foundation seeks to educate, advocate for, empower and provide hands-on support to young women affected by breast cancer.

### FINANCIAL AND PRACTICAL HELP

- Wigs
- Wish Fulfillment

### INFORMATION/EDUCATION

- Patient Education

### SPECIAL POPULATIONS

- Young Adults

### CANCER TYPE

- Breast Cancer

## Ulman Foundation

1215 E Fort Ave.  
Suite 104  
Baltimore, MD 21230

888-393-FUND (3863) (toll free)  
410-964-0202

[ulmanfoundation.org](http://ulmanfoundation.org)  
[info@ulmanfoundation.org](mailto:info@ulmanfoundation.org)

The Ulman Foundation provides a community of support for young adults ages 15-39, and their loved ones, impacted by cancer. Direct services include one-on-one support, exercise and wellness programming, college scholarships and free lodging at Ulman House in Baltimore, MD.

### FINANCIAL AND PRACTICAL HELP

- Financial Assistance
- Lodging
- Scholarships

### INFO/EDUCATION

- Home Care
- Hospice
- Patient Education

### SPECIAL POPULATIONS

- Young Adults

### CANCER TYPES

- All Cancers

## Wigs for Kids

24231 Center Ridge Rd.  
Westlake, OH 44145

440-333-4433

[www.wigsforkids.org](http://www.wigsforkids.org)  
[info@wigsforkids.org](mailto:info@wigsforkids.org)

Wigs for Kids provides free wigs to children under the age of 18 who have lost their hair due to a medical condition.

### FINANCIAL AND PRACTICAL HELP

- Prostheses
- Wigs

### SPECIAL POPULATIONS

- Children and Adolescents
- Young Adults

### CANCER TYPES

- Childhood Cancers

**This chapter lists organizations that provide financial assistance only to people living in a particular region of the country. These organizations are alphabetized by state, and the categories listed tell you what kind of services the organization provides.**

**Some of these organizations help individuals only in particular counties, cities or areas of the state. Others only serve individuals with certain diagnoses. Be sure to read through the organization description to find out who these organizations help. Keep in mind that local organizations may be smaller and more limited in the amount of help they can provide.**

**For regional organizations in your state, go to the page number provided below:**

Alabama (AL).....	94	Montana (MT).....	160
Alaska (AK).....	95	Nebraska (NE).....	161
Arizona (AZ).....	96	Nevada (NV).....	162
Arkansas (AR).....	98	New Hampshire (NH).....	163
California (CA).....	99	New Jersey (NJ).....	165
Colorado (CO).....	111	New Mexico (NM).....	172
Connecticut (CT).....	116	New York (NY).....	174
Delaware (DE).....	119	North Carolina (NC).....	194
District of Columbia (DC).....	121	North Dakota (ND).....	196
Florida (FL).....	122	Ohio (OH).....	197
Georgia (GA).....	124	Oklahoma (OK).....	200
Hawaii (HI).....	127	Oregon (OR).....	201
Idaho (ID).....	129	Pennsylvania (PA).....	202
Illinois (IL).....	130	Rhode Island (RI).....	206
Indiana (IN).....	132	South Carolina (SC).....	208
Iowa (IA).....	137	South Dakota (SD).....	211
Kansas (KS).....	138	Tennessee (TN).....	212
Kentucky (KY).....	140	Texas (TX).....	213
Louisiana (LA).....	141	Utah (UT).....	219
Maine (ME).....	144	Vermont (VT).....	220
Maryland (MD).....	147	Virginia (VA).....	221
Massachusetts (MA).....	149	Washington (WA).....	225
Michigan (MI).....	152	West Virginia (WV).....	226
Minnesota (MN).....	153	Wisconsin (WI).....	227
Mississippi (MS).....	155	Wyoming (WY).....	228
Missouri (MO).....	156		



## | ALABAMA |

### **Kid One Transport**

110 12th St. N  
Birmingham, AL 35203

800-543-7143 (toll free)  
205-978-1000

[www.kidone.org](http://www.kidone.org)  
[mhinkle@kidone.org](mailto:mhinkle@kidone.org)

Kid One provides transportation to medical treatment facilities for children with cancer who have limited or no transportation. Kid One serves 43 counties throughout Alabama.

#### **FINANCIAL AND PRACTICAL HELP**

- Transportation

#### **SPECIAL POPULATIONS**

- Youth

#### **CANCER TYPES**

- Childhood Cancers

## | ALASKA |

### **Cancer Connection**

P.O. Box 20329  
Juneau, AK 99802

907-796-2273

[www.cancerconnectionak.org](http://www.cancerconnectionak.org)  
[admin@cancerconnectionak.org](mailto:admin@cancerconnectionak.org)

Cancer Connection provides support services for people living with cancer and their families and offers financial assistance to southeastern Alaskans for out-of-state travel expenses related to treatment. They also provide community-based health education and resources.

#### **FINANCIAL AND PRACTICAL HELP**

- Financial Assistance
- Housing
- Lodging
- Transportation

#### **INFO/EDUCATION**

- Patient Education
- Referrals

#### **CANCER TYPES**

- All Cancers

## | ARIZONA |

### Phoenix Cancer Support Network

8390 E Via De Ventura,  
Suite F110 #203  
Scottsdale, AZ 85258

602-760-6000

[www.pcsnetwork.org](http://www.pcsnetwork.org)  
[info@pcsnetwork.org](mailto:info@pcsnetwork.org)

Phoenix Cancer Support Network endeavors to empower patients throughout their cancer journey by providing support and guidance to patients and their caregivers. They offer referrals, assist with health care navigation and provide limited financial assistance.

#### FINANCIAL AND PRACTICAL HELP

- Financial Assistance
- Transportation

#### INFO/EDUCATION

- Patient Education
- Referrals

#### CANCER TYPES

- All Cancers

### The Singletons

13832 N 32nd St., Bldg. C  
Suite 134B  
Phoenix, AZ 85032

480-818-5285

[www.thesingletonsaz.org](http://www.thesingletonsaz.org)  
[contact@thesingletonsaz.org](mailto:contact@thesingletonsaz.org)

The Singletons is dedicated to providing hope and support to single-parent families affected by cancer. In order to help support the lives of those impacted by a cancer diagnosis, they provide household essentials, assist with meals and meal preparation, provide transportation and offer small monthly stipends to help pay for household bills.

#### FINANCIAL AND PRACTICAL HELP

- Financial Assistance
- Food
- Housing
- Utilities

#### INFO/EDUCATION

- Patient Education

#### SPECIAL POPULATIONS

- Caregivers
- Children and Adolescents

#### CANCER TYPES

- All Cancers

## | ARKANSAS |

### Hope Cancer Resources

5835 W Sunset Ave.  
Springdale, AR 72762

800-394-0249 (toll free)  
479-361-5847

[www.hopcancerresources.org](http://www.hopcancerresources.org)  
[info@hopcancerresources.org](mailto:info@hopcancerresources.org)

Hope Cancer Resources provides compassionate, professional cancer support and education in the northwest Arkansas region. Services are available to individuals living with or being treated for cancer in Benton, Carroll, Madison or Washington counties.

#### FINANCIAL AND PRACTICAL HELP

- General Living Expenses
- Genetic Testing
- Housing
- Lodging
- Medication
- Screening
- Transportation

#### INFO/EDUCATION

- Patient Education
- Referrals

#### CANCER TYPES

- All Cancers

## | CALIFORNIA |

### Bay Area Cancer Connections

2335 El Camino Real  
Palo Alto, CA 94306

888-222-4401 (toll free)  
650-326-6686

[www.bayareacancer.org](http://www.bayareacancer.org)  
[info@bayareacancer.org](mailto:info@bayareacancer.org)

Bay Area Cancer Connections supports people touched by breast and ovarian cancer. They offer an array of services including support groups, counseling and educational seminars as well as practical care such as wigs and prostheses, complementary therapies and free screenings to low-income, uninsured women and men under the age of 40.

#### FINANCIAL AND PRACTICAL HELP

- Prostheses
- Screening
- Wigs
- Wish Fulfillment

#### INFO/EDUCATION

- Insurance
- Patient Education

#### CANCER TYPES

- Breast Cancer
- Ovarian Cancer

## Breast Cancer Angels

P.O. Box 340  
Los Alamitos, CA 90720

714-898-8900

[www.breastcancerangels.org](http://www.breastcancerangels.org)  
[debbie@breastcancerangels.org](mailto:debbie@breastcancerangels.org)

Breast Cancer Angels assists individuals as they are going through breast cancer treatment with immediate direct financial assistance. They will assist with food, gas, partial rent, utilities, car payments, insurance co-pays as well as counseling and legal advice.

### FINANCIAL AND PRACTICAL HELP

- Camps and Retreats
- Co-Payments
- Financial Assistance
- Food
- Medical Expenses
- Transportation
- Utilities

### INFO/EDUCATION

- Debt Management
- Home Care
- Hospice
- Insurance
- Legal
- Patient Education

### CANCER TYPES

- Breast Cancer

## Breast Cancer Emergency Fund

275 Fifth St.  
Suite 402  
San Francisco, CA 94103

415-932-6020

[www.bcef.org](http://www.bcef.org)  
[info@bcef.org](mailto:info@bcef.org)

Breast Cancer Emergency Fund (BCEF) provides emergency financial assistance to low-income women with breast cancer in San Francisco, San Mateo and Santa Clara counties. Financial assistance includes help with medical expenses, including co-pays, insurance/COBRA payments, prescriptions and emergency dental care as well as essential utilities and housing expenses.

### FINANCIAL AND PRACTICAL HELP

- Financial Assistance
- Insurance Premiums
- Medical Expenses

### INFO/EDUCATION

- Patient Education
- Referrals

### CANCER TYPE

- Breast Cancer

## Breast Cancer Solutions

25422 Trabuco Rd.  
#105-167  
Lake Forest, CA 92630

866-960-9222 (toll free)

[www.breastcancersolutions.org](http://www.breastcancersolutions.org)  
[info@breastcancersolutions.org](mailto:info@breastcancersolutions.org)

The mission of Breast Cancer Solutions is to provide breast cancer patients with direct assistance, community referrals and compassionate support. Financial assistance is available to eligible individuals living in Orange, San Bernardino or Riverside counties.

### FINANCIAL AND PRACTICAL HELP

- Financial Assistance

### INFO/EDUCATION

- Patient Education
- Referrals

### CANCER TYPE

- Breast Cancer

## IMPACT (IMProving Access, Counseling & Treatment for Californians with Prostate Cancer)

P.O. Box 957180  
Los Angeles, CA 90095

800-409-8252 (toll free)

[www.california-impact.org](http://www.california-impact.org)  
[info@california-impact.org](mailto:info@california-impact.org)

IMPACT provides free prostate cancer treatment to Californian men with little or no health insurance. The program only covers approved prostate cancer treatments. They can help prostate cancer patients find a doctor or hospital where they can receive treatment and provide counseling to prostate cancer patients and their families. In order to qualify, a patient must be diagnosed with prostate cancer and be of low-income with no insurance or limited-coverage insurance.

### FINANCIAL AND PRACTICAL HELP

- Co-Payments
- Medical Expenses
- Medication

### INFO/EDUCATION

- Hospice
- Patient Education
- Referrals

### CANCER TYPE

- Prostate Cancer

## Jacob's Heart Children's Cancer Support Services

680 W Beach St.  
Watsonville, CA 95076

831-724-9100

[www.jacobsheart.org](http://www.jacobsheart.org)  
[admin@jacobsheart.org](mailto:admin@jacobsheart.org)

Jacob's Heart Children's Cancer Support Services exists to improve the quality of life for children with cancer and support their families with the challenges they face. They address the emotional, practical and financial struggles for families of children and teens during treatment, families experiencing anticipatory grief and those who are bereaved. Service in Santa Cruz, Monterey, San Benito and South Santa Clara counties.

### FINANCIAL AND PRACTICAL HELP

- Camps and Retreats
- Financial Assistance
- Food
- Meal Delivery
- Transportation
- Utilities

### INFO/EDUCATION

- Referrals

### SPECIAL POPULATIONS

- Children and Adolescents

### CANCER TYPES

- Childhood Cancers

## Keaton's Child Cancer Alliance

2260 Douglas Blvd.  
Suite 140  
Roseville, CA 95661

916-784-6786

[www.childcancer.org](http://www.childcancer.org)  
[info@childcancer.org](mailto:info@childcancer.org)

Keaton's Child Cancer Alliance offers advocacy, education and financial assistance to families of children with cancer who live in northern California or are there for cancer treatment. To qualify for financial assistance, patients must be referred by a social worker at one of the area hospitals served by the organization. The financial assistance can be used for any needs the family has.

### FINANCIAL AND PRACTICAL HELP

- General Living Expenses

### INFO/EDUCATION

- Patient Education
- Referrals

### SPECIAL POPULATIONS

- Children and Adolescents

### CANCER TYPES

- Childhood Cancers

## **PADRES Contra El Cáncer**

4650 Sunset Blvd.  
Los Angeles, CA 90027

888-441-0056 (toll free)

[www.iamhope.org](http://www.iamhope.org)  
[info@iamhope.org](mailto:info@iamhope.org)

PADRES Contra El Cáncer provides assistance to families who have a child with cancer. Services include counseling, case management, transportation assistance, grocery assistance, phone cards, meal coupons and parking vouchers.

### **FINANCIAL AND PRACTICAL HELP**

- Camps and Retreats
- General Living Expenses
- Transportation
- Wish Fulfillment

### **INFO/EDUCATION**

- Patient Education
- Referrals

### **SPECIAL POPULATIONS**

- Children and Adolescents
- Young Adults

### **CANCER TYPES**

- Childhood Cancers

## **Project Open Hand**

730 Polk St.  
San Francisco, CA 94109

415-447-2300

[www.openhand.org](http://www.openhand.org)  
[info@openhand.org](mailto:info@openhand.org)

Project Open Hand provides free meal delivery service in the city of San Francisco and Alameda County for anyone with an active diagnosis of cancer. Their Wellness Program also includes select grocery items (for pick-up only).

### **FINANCIAL AND PRACTICAL HELP**

- Meal Delivery

### **CANCER TYPES**

- All Cancers

## Teddy Bear Cancer Foundation

3892 State St.  
Suite 220  
Santa Barbara, CA 93105

805-962-7466

[www.teddybearcancerfoundation.org](http://www.teddybearcancerfoundation.org)  
[info@teddybearcancerfoundation.org](mailto:info@teddybearcancerfoundation.org)

Teddy Bear Cancer Foundation supports families living in Santa Barbara, Ventura, and San Luis Obispo counties that have a child with cancer by providing financial, educational and emotional support.

### FINANCIAL AND PRACTICAL HELP

- Financial Assistance

### SPECIAL POPULATIONS

- Children and Adolescents

### CANCER TYPES

- Childhood Cancers

## Wings of Eagles

P.O. Box 4031  
Chico, CA 95927

530-893-9231  
530-570-5985

[www.wingsofeagles.org](http://www.wingsofeagles.org)  
[info@wingsofeagles.org](mailto:info@wingsofeagles.org)

Wings of Eagles provides financial assistance for non-medical expenses to families who have a child with a serious illness and live in Butte, Colusa, Glenn, Tehama, Sutter and Yuba counties.

### FINANCIAL AND PRACTICAL HELP

- General Living Expenses
- Housing
- Lodging
- Transportation

### SPECIAL POPULATIONS

- Children and Adolescents
- Young Adults

### CANCER TYPES

- Childhood Cancers



## Women's Cancer Resource Center

2908 Ellsworth St.  
Berkeley, CA 94705

510-420-7900  
510-809-0215 (Spanish)

[www.wcrc.org](http://www.wcrc.org)  
[wcrc@wcrc.org](mailto:wcrc@wcrc.org)

Women's Cancer Resource Center helps women with cancer improve their quality of life through education, supportive services and practical assistance. They provide information and referrals to community resources in English and Spanish, support groups, in-home support, psychotherapy, emergency financial support and wellness workshops.

### FINANCIAL AND PRACTICAL HELP

- Financial Assistance
- Food
- Home Care
- Housing
- Legal

### INFO/EDUCATION

- Home Care
- Legal
- Patient Education
- Referrals

### CANCER TYPES

- All Cancers

## | COLORADO |

## Colorado Ovarian Cancer Alliance

1777 S Bellaire St.  
Suite 170  
Denver, CO 80222

720-519-3122

[www.colorado-ovariancancer.org](http://www.colorado-ovariancancer.org)  
[contactus@colorado-ovariancancer.org](mailto:contactus@colorado-ovariancancer.org)

The mission of the Colorado Ovarian Cancer Alliance (COCA) is to provide support to those affected by ovarian cancer and to promote awareness and early detection of ovarian cancer through advocacy and education. Applicants must be residents within Colorado, meet financial qualifications and be diagnosed with Ovarian Cancer or Fallopian Tube Cancer. There is a COCA Cares Financial Application that has to be filled with any referral.

### FINANCIAL AND PRACTICAL HELP

- Child Care
- Financial Assistance
- Insurance Premiums
- Medical Equipment/Supplies
- Medical Expenses
- Medication
- Transportation
- Utilities

### INFO/EDUCATION

- Insurance

### CANCER TYPES

- Ovarian Cancer

## Project Angel Heart

4950 Washington St.  
Denver, CO 80216

800-381-5612 (toll free)  
303-830-0202

[www.projectangelheart.org](http://www.projectangelheart.org)

Project Angel Heart delivers meals at no cost to people living with a diagnosed life-challenging illness and who have difficulty accessing or preparing a nutritious meal due to their illness, treatment or other disability. Serving the Denver metropolitan and Colorado Springs areas.

### FINANCIAL AND PRACTICAL HELP

- Food
- Meal Delivery

### CANCER TYPES

- All Cancers

## Ray of Hope Cancer Foundation

1385 S Colorado Blvd.  
Suite 108  
Denver, CO 80220

720-238-5401

[rayofhopecolorado.org](http://rayofhopecolorado.org)  
[grants@rayofhopecolorado.org](mailto:grants@rayofhopecolorado.org)

Ray of Hope Cancer Foundation responds to the urgent needs of Coloradans who have cancer by providing financial assistance with dignity and humanity. Grant applications must have a cancer diagnosis and be receiving active cancer treatment and qualify as Colorado residents in dire financial circumstances.

### FINANCIAL AND PRACTICAL HELP

- Financial Assistance

### CANCER TYPES

- All Cancers

## Sense of Security

1355 S Colorado Blvd.  
Suite C-302  
Denver, CO 80222

866-736-3113 (toll free)  
303-669-3113

[www.senseofsecurity.org](http://www.senseofsecurity.org)  
[ttaravella@senseofsecurity.org](mailto:ttaravella@senseofsecurity.org)

Sense of Security provides financial assistance to people with breast cancer in Colorado through a sustained assistance program for up to six months during treatment.

### FINANCIAL AND PRACTICAL HELP

- General Living Expenses

### CANCER TYPE

- Breast Cancer

## Sue's Gift Gynecologic Cancer Support

525 N Cascade Ave.  
Suite 213  
Colorado Springs, CO 80903

719-422-9964

[www.suesgift.org](http://www.suesgift.org)  
[tealtribe@suesgift.org](mailto:tealtribe@suesgift.org)

Sue's Gift provides financial assistance to residents of the southern half of Colorado and to women throughout Colorado. Eligible applicants must have a gynecologic cancer diagnosis and currently be in oncologist-directed treatment for gynecologic cancer or within three months of completion of treatment.

### FINANCIAL AND PRACTICAL HELP

- Co-Payments
- Financial Assistance
- Medical Expenses

### INFO/EDUCATION

- Patient Education
- Referrals

### CANCER TYPES

- Ovarian Cancer

## | CONNECTICUT |

### **Ann's Place**

80 Saw Mill Rd.  
Danbury, CT 06810

203-790-6568

[www.annsplace.org](http://www.annsplace.org)  
[info@annsplace.org](mailto:info@annsplace.org)

Ann's Place provides individual and family counseling, support groups, wellness programs, peer support, financial aid and other services free of charge to people coping with cancer. Financial aid is limited to people in the greater Danbury area and is approved on a case-by-case basis.

#### **FINANCIAL AND PRACTICAL HELP**

- Camps and Retreats
- General Living Expenses
- Housing
- Insurance Premiums
- Lodging
- Medical Equipment/Supplies
- Medical Expenses
- Medication
- Prostheses
- Wigs

#### **INFO/EDUCATION**

- Patient Education
- Referrals

#### **CANCER TYPES**

- All Cancers

### **Friends of Karen**

See New York listing.

### **Magnolia Meals at Home**

See New York listing.

## Ron Foley Foundation

1000 Farmington Ave.  
Suite 108A  
West Hartford, CT 06107

860-521-0500

[www.ronsrun.org](http://www.ronsrun.org)  
[info@ronsrun.org](mailto:info@ronsrun.org)

In addition to funding research and providing outreach, the Ron Foley Foundation provides financial assistance to patients with pancreatic cancer in Connecticut, Maine, New Hampshire, New Jersey, New York, Massachusetts and Rhode Island. Referrals from social workers are preferred.

### FINANCIAL AND PRACTICAL HELP

- Financial Assistance

### CANCER TYPES

- Pancreatic Cancer

## | DELAWARE |

## Delaware Breast Cancer Coalition

100 W 10th Street  
Suite 209  
Wilmington, DE 19801

866-312-3222 (toll free)  
302-778-1102

[debreastcancer.org](http://debreastcancer.org)  
[dbcc@debreastcancer.org](mailto:dbcc@debreastcancer.org)

The Delaware Breast Cancer Coalition works to support the needs of breast cancer survivors in the state, educate local audiences on breast health, provide outreach to underserved communities and connect local survivors. They have several locations throughout the state.

### FINANCIAL AND PRACTICAL HELP

- Screening

### INFO/EDUCATION

- Patient Education

### CANCER TYPES

- Breast Cancer

## **Kelly Anne Dolan Memorial Fund**

See Pennsylvania listing.

## **Linda Creed Breast Cancer Foundation**

See Pennsylvania listing.

## **Unite for HER**

See Pennsylvania listing.

## **| DISTRICT OF COLUMBIA |**

### **Food & Friends**

219 Riggs Rd. NE  
Washington, DC 20011

202-269-2277

[www.foodandfriends.org](http://www.foodandfriends.org)  
[info@foodandfriends.org](mailto:info@foodandfriends.org)

Food & Friends provides free meal delivery and nutritional counseling services to cancer patients living in and around Washington, DC including seven counties in Maryland and seven counties and six independent cities in Virginia. A referral from a social worker or health care provider is required.

#### **FINANCIAL AND PRACTICAL HELP**

- Food
- Meal Delivery
- Nutritional Supplements

#### **CANCER TYPES**

- All Cancers

## | FLORIDA |

### Child Cancer Fund

4720 Salisbury Rd.  
Jacksonville, FL 32256

904-396-4223

[www.childcancerfund.org](http://www.childcancerfund.org)

Child Cancer Fund provides emotional support and financial assistance through a program that is administered through Wolfson Children's Hospital and Nemours Children's Clinic. Awarded aid covers non-medical expenses such as housing costs, utility bills, food, gas, auto loans and other expenses that medical insurance does not cover. The fund assists families in northeast Florida and southeast Georgia whose child is treated at Wolfson or Nemours only in Jacksonville.

#### FINANCIAL AND PRACTICAL HELP

- Camps and Retreats
- Food
- General Living Expenses
- Housing
- Insurance Premiums
- Lodging
- Transportation
- Utilities

#### INFO/EDUCATION

- Patient Education

#### SPECIAL POPULATIONS

- Children and Adolescents

#### CANCER TYPES

- Childhood Cancers

### Tom Coughlin Jay Fund Foundation (The Jay Fund)

P.O. Box 50798  
Jacksonville Beach, FL 32240

866-538-6331 (toll free)  
904-543-2599 (In New York or New Jersey)

[www.tcjayfund.org](http://www.tcjayfund.org)

The Jay Fund provides financial and emotional assistance to children and young adults age 22 and under and their families going through treatment for cancer. Financial assistance is awarded to help pay for non-medical expenses such as rent and utilities. The Jay Fund also provides funding for umbilical cord blood transplants. The fund assists patients in northern Florida (Alachua, Baker, Bradford, Clay, Columbia, Duval, Flagler, Nassau, Putnam, St. Johns, or Union County), southern Georgia (Camden, Charlton, Clinch, Glynn, or Ware County), northern New Jersey (Bergen, Essex, Hudson, Middlesex, Passaic, or Union County) and New York City (Bronx, Brooklyn, Manhattan, Staten Island, or Queens).

#### FINANCIAL AND PRACTICAL HELP

- Camps and Retreats
- General Living Expenses
- Scholarships
- Transportation

#### INFO/EDUCATION

- Debt Management

#### SPECIAL POPULATIONS

- Children and Adolescents
- Young Adults

#### CANCER TYPES

- All Cancers

## | GEORGIA |

### The Atlanta Cancer Care Foundation

5670 Peachtree Dunwoody Rd.  
Suite 1100  
Atlanta, GA 30342

404-213-1667

[www.atlantacancercarefoundation.org](http://www.atlantacancercarefoundation.org)  
[courage@atlantacancercarefoundation.org](mailto:courage@atlantacancercarefoundation.org)

The Atlanta Cancer Care Foundation seeks to alleviate the financial burden felt by patients who are struggling financially because of a cancer diagnosis and the costs of treatment. Patients must be 18 years of age or older, and either be in active treatment or have completed active treatment in the past 12 months. Patients must live or be treated in 17 Georgia counties: Cherokee, Clayton, Cobb, Coweta, Dawson, DeKalb, Douglas, Fayette, Forsyth, Fulton, Gwinnett, Hall, Henry, Newton, Paulding, Rockdale and Walton.

#### FINANCIAL AND PRACTICAL HELP

- Co-Payments
- Financial Assistance
- Insurance Premiums
- Medical Expenses

#### CANCER TYPES

- All Cancers

### The Cancer Foundation of Northeast Georgia

P.O. Box 49309  
Athens, GA 30604

706-353-4354

[www.cancerfoundationofnega.org](http://www.cancerfoundationofnega.org)

The Cancer Foundation's mission is to help alleviate the financial burden of cancer for eligible patients. This includes emergency financial assistance for basic life needs such as housing, utilities, food and medications for cancer patients living in Northeast Georgia (Banks, Barrow, Clarke, Elbert, Franklin, Greene, Habersham, Hart, Jackson, Madison, Morgan, Oconee, Oglethorpe, Putnam, Stephens, Taliaferro, Walton and Wilkes counties).

#### FINANCIAL AND PRACTICAL HELP

- Co-Payments
- Food
- Financial Assistance
- Housing
- Insurance Premiums
- Medication
- Utilities

#### CANCER TYPES

- All Cancers



## Child Cancer Fund

See Florida listing.

## Tom Coughlin Jay Fund Foundation

See Florida listing.

## | HAWAII |

### Hawaii Children's Cancer Foundation (HCCF)

1814 Liliha St.  
Honolulu, HI 96817

808-528-5161

[www.hccf.org](http://www.hccf.org)  
[info@hccf.org](mailto:info@hccf.org)

Hawaii Children's Cancer Foundation provides financial assistance, support groups, social events, education and advocacy to families affected by childhood cancer who live in Hawaii or are there for treatment.

#### FINANCIAL AND PRACTICAL HELP

- General Living Expenses
- Medical Equipment/Supplies
- Medical Expenses
- Medication
- Scholarships
- Transportation
- Other – Textbook Reimbursement

#### SPECIAL POPULATIONS

- Children and Adolescents
- Young Adults

#### CANCER TYPES

- Childhood Cancers

## **HUGS: Help, Understanding & Group Support**

3636 Kilauea Ave.  
Honolulu, HI 96816

808-732-4846

[www.hugshawaii.org](http://www.hugshawaii.org)  
[info@hugshawaii.org](mailto:info@hugshawaii.org)

HUGS's mission is to strengthen Hawaii's families and improve their quality of life as they face the emotional and financial hardships of caring for a seriously ill child. The organization offers case management, respite care, special events, support groups and airfare assistance for families residing in Hawaii who are caring for a child affected by a life-threatening illness.

### **FINANCIAL AND PRACTICAL HELP**

- Camps and Retreats
- Financial Assistance
- Food
- Transportation

### **INFO/EDUCATION**

- Referrals

### **CANCER TYPES**

- All Cancers

## **| IDAHO |**

### **Camp Rainbow Gold**

216 W Jefferson St.  
Boise, ID 83702

208-350-6435

[camprainbowgold.org](http://camprainbowgold.org)  
[info@camprainbowgold.org](mailto:info@camprainbowgold.org)

Camp Rainbow Gold helps children diagnosed with cancer and their families experience emotional empowerment through the great outdoors. They offer a range of camps, including those for siblings and families, provide support for teens and have a college scholarship program.

### **FINANCIAL AND PRACTICAL HELP**

- Camps and Retreats
- Scholarships

### **SPECIAL POPULATIONS**

- Caregivers
- Children and Adolescents
- Siblings

### **CANCER TYPES**

- All Cancers

## | ILLINOIS |

### **Bear Necessities Pediatric Cancer Foundation**

55 W Wacker Dr.  
Suite 1100  
Chicago, IL 60601

312-214-1200

[www.bearnecessities.org](http://www.bearnecessities.org)  
[office@bearnecessities.org](mailto:office@bearnecessities.org)

The mission of Bear Necessities is to eliminate pediatric cancer and to provide hope and support to those who are touched by it. Through its Bear Hugs Program, the foundation provides limited financial assistance to qualifying families affected by childhood cancer and provides customized experiences for patients (ages 0 – 19). Families must live in Illinois or be receiving treatment at one of the nine Chicago-area hospitals with pediatric oncology departments.

#### **FINANCIAL AND PRACTICAL HELP**

- Financial Assistance
- Food
- Transportation
- Utilities
- Wish Fulfillment

#### **SPECIAL POPULATIONS**

- Children and Adolescents
- Young Adults

#### **CANCER TYPES**

- Childhood Cancers

### **Leukemia Research Foundation**

191 Waukegan Rd.  
Suite 105  
Northfield, IL 60093

847-424-0600

[www.allbloodcancers.org](http://www.allbloodcancers.org)  
[info@lrfmail.org](mailto:info@lrfmail.org)

Provides financial reimbursement for almost any treatment-related expense not covered by insurance to leukemia, lymphoma, multiple myeloma and myelodysplastic syndrome (MDS) patients living within 100 miles of Chicago or in the state of Illinois.

#### **FINANCIAL AND PRACTICAL HELP**

- Housing
- Lodging
- Medical Equipment/Supplies
- Medical Expenses
- Medication
- Transportation

#### **INFO/EDUCATION**

- Fundraising
- Patient Education

#### **SPECIAL POPULATIONS**

- Children and Adolescents
- Young Adults

#### **CANCER TYPES**

- Leukemia
- Lymphoma
- Myelodysplastic Syndrome (MDS)
- Multiple Myeloma

## | INDIANA |

### Cancer Resources for Elkhart County

23971 US Highway 33  
Elkhart, IN 46517

574-875-5158

[www.elkhartcancer.org](http://www.elkhartcancer.org)  
[info@elkhartcancer.org](mailto:info@elkhartcancer.org)

Cancer Resources for Elkhart County provides assistance to cancer patients and their families in a way that enhances their quality of life. Services are eligible to those who live or work in Elkhart County.

#### FINANCIAL AND PRACTICAL HELP

- Co-Payments
- Financial Assistance
- Lodging
- Medical Equipment/Supplies
- Medical Expenses
- Medication
- Transportation
- Wigs

#### INFO/EDUCATION

- Patient Education
- Referrals

#### CANCER TYPES

- All Cancers

### Cancer Services of Grant County

305 S Norton Ave.  
Marion, IN 46952

765-664-6815

[www.grantcountycancer.org](http://www.grantcountycancer.org)

Cancer Services of Grant County helps provide patient navigation, transportation, equipment, supplies, education, outreach speakers, financial assistance with cancer-related prescriptions, free screenings and more. Assistance is available to anyone who lives, works or is treated in Grant County, Indiana.

#### FINANCIAL AND PRACTICAL HELP

- Financial Assistance
- Insurance Premiums
- Medical Expenses
- Medical Equipment/Supplies
- Medication
- Prostheses
- Screenings
- Transportation
- Wigs

#### INFO/EDUCATION

- Debt Management
- Home Care
- Hospice
- Insurance
- Legal
- Patient Education
- Referrals

#### CANCER TYPES

- All Cancers

## Cancer Services of Northeast Indiana

6316 Mutual Dr.  
Fort Wayne, IN 46825

866-484-9560 (toll free)  
260-484-9560

[www.cancer-services.org](http://www.cancer-services.org)

Cancer Services of Northeast Indiana provides several programs for people with cancer and their loved ones living in northeast Indiana. Services include personal advocacy, medical equipment loans, transportation, support groups, a resource lending library and financial assistance. Provides services to people in Allen, Adams, DeKalb, Huntington, Kosciusko, LaGrange, Noble, Steuben, Wabash, Wells and Whitley counties.

### FINANCIAL AND PRACTICAL HELP

- Fertility Preservation
- General Living Expenses
- Genetic Testing
- Insurance Premiums
- Medical Equipment/Supplies
- Medical Expenses
- Medication
- Transportation

### SPECIAL POPULATIONS

- Children and Adolescents

### INFO/EDUCATION

- Debt Management
- Entitlements/Benefits
- Home Care
- Hospice
- Insurance
- Patient Education
- Referrals

### CANCER TYPES

- All Cancers

## Little Red Door Cancer Agency

1801 N Meridian St.  
Indianapolis, IN 46202

317-925-5595

[www.littlereddoor.org](http://www.littlereddoor.org)

Little Red Door Cancer Agency provides free cancer screenings for breast, cervical and prostate cancer. They also provide HPV vaccinations and cancer support services including nutritional supplements, breast prostheses and bras, wigs/hats/turbans, various medical supplies, transportation and a camp for children with cancer. These services are available to residents of central Indiana (Boone, Hamilton, Hancock, Hendricks, Johnson, Marion, Morgan and Shelby counties) who are low-income and uninsured or underinsured. Nutritional supplements and transportation services are limited to Marion County residents only.

### FINANCIAL AND PRACTICAL HELP

- Camps and Retreats
- Medical Equipment/Supplies
- Medical Expenses
- Prostheses
- Screening
- Transportation
- Wigs

### INFO/EDUCATION

- Insurance
- Patient Education
- Referrals

### SPECIAL POPULATIONS

- Children and Adolescents
- Young Adults

### CANCER TYPES

- All Cancers

## RiverBend Cancer Services

3516 E Jefferson Blvd.  
South Bend, IN 46615

574-287-4197

[www.riverbendcancerservices.org](http://www.riverbendcancerservices.org)  
[info@riverbendcancerservices.org](mailto:info@riverbendcancerservices.org)

RiverBend Cancer Services provides counseling services, medical equipment loans, financial assistance for cancer medications and supplies, nutritional products, wigs, bras and prosthetics, educational programs and a resource library for people with cancer living in St. Joseph County. All services are available free of charge.

### FINANCIAL AND PRACTICAL HELP

- Financial Assistance
- Medical Equipment/Supplies
- Medical Expenses
- Nutritional Supplements
- Prostheses
- Transportation
- Wigs

### INFO/EDUCATION

- Patient Education

### CANCER TYPES

- All Cancers

## | IOWA |

## Above + Beyond Cancer

1915 Grand Ave.  
Des Moines, IA 50309

[aboveandbeyondcancer.org](http://aboveandbeyondcancer.org)  
[info@aboveandbeyondcancer.org](mailto:info@aboveandbeyondcancer.org)

Above + Beyond Cancer takes cancer survivors on incredible adventures, such as to Mount Everest Base Camp and the top of Mount Kilimanjaro. They seek to inspire the public by devoting themselves to a life of advocacy and leading an example for healthy living in their communities.

### FINANCIAL AND PRACTICAL HELP

- Camps and Retreats

### INFO/EDUCATION

- Patient Education

### CANCER TYPES

- All Cancers

## | KANSAS |

### Cancer Action

10520 Barkley  
Suite 100  
Overland Park, KS 66212

913-642-8885

[www.canceractionkc.org](http://www.canceractionkc.org)

Cancer Action offers programs and services addressing the physical, emotional, social and financial needs of people living with cancer in the Kansas City area. All services are free of charge and provided by professionals and volunteers. This organization also provides education on prevention and early detection.

#### FINANCIAL AND PRACTICAL HELP

- Medical Equipment/Supplies
- Medication
- Nutritional Supplements
- Prostheses
- Transportation
- Wigs

#### INFO/EDUCATION

- Patient Education
- Referrals

#### CANCER TYPES

- All Cancers

### Victory in the Valley

3755 E Douglas Ave.  
Wichita, KS 67218

316-682-7400

[www.victoryinthevalley.org](http://www.victoryinthevalley.org)

Victory in the Valley provides services to cancer patients in active treatment. The organization serves Wichita and provides limited services throughout Kansas only and requires a referral from an oncology physician.

#### FINANCIAL AND PRACTICAL HELP

- Camps and Retreats
- Housing
- Lodging
- Medical Equipment/Supplies
- Medication
- Prostheses
- Transportation
- Wigs

#### INFO/EDUCATION

- Patient Education
- Referrals

#### CANCER TYPES

- All Cancers

## | KENTUCKY |

### **Kentucky Cancer Link**

2425 Regency Rd.  
Suite B  
Lexington, KY 40503

877-597-4655 (toll free)  
859-309-1700

[kycancerlink.org](http://kycancerlink.org)  
[info@kycancerlink.org](mailto:info@kycancerlink.org)

Kentucky Cancer Link assists those who are uninsured or underinsured in obtaining funding and support for cancer screenings, wigs and mastectomy products, transportation referrals and other means of help.

#### **FINANCIAL AND PRACTICAL HELP**

- Screening
- Prosthesis
- Wigs

#### **INFO/EDUCATION**

- Insurance
- Patient Education

#### **CANCER TYPES**

- All Cancers

## | LOUISIANA |

### **Cancer Association of Greater New Orleans (CAGNO)**

824 Elmwood Park Blvd.  
Suite 154  
New Orleans, LA 70123

800-624-2039 (toll free)  
504-733-5539

[www.cagno.org](http://www.cagno.org)

CAGNO focuses on education, research and services to cancer patients and their families in New Orleans. Their patient services program provides medications, supplies and comfort items to patients who cannot afford these necessities.

#### **FINANCIAL AND PRACTICAL HELP**

- Medical Equipment/Supplies
- Medication
- Prosthesis
- Wigs

#### **INFO/EDUCATION**

- Patient Education

#### **CANCER TYPES**

- All Cancers



## Cancer Foundation League

411 Calypso St.  
1st Floor  
Monroe, LA 71201

318-966-1953

[www.cancerfoundationleague.com](http://www.cancerfoundationleague.com)

The Cancer Foundation League provides direct financial assistance to people with cancer living or receiving treatment in northeast Louisiana.

### FINANCIAL AND PRACTICAL HELP

- Financial Assistance
- Medical Expenses

### INFO/EDUCATION

- Patient Education

### CANCER TYPES

- All Cancers

## Cancer Services

550 Lobdell Ave.  
Baton Rouge, LA 70806

800-883-4515 (In-state only) (toll free)  
225-927-2273

[www.cancerservices.org](http://www.cancerservices.org)  
[staff@cancerservices.com](mailto:staff@cancerservices.com)

Cancer Services supports cancer patients of the Baton Rouge area. Services include counseling, advocacy, education, prescription assistance, nutritional supplement assistance, mileage reimbursement, medical equipment, post-surgical supplies and prostheses. All clients served must provide proof of diagnosis and must either live or be receiving treatment in one of the following parishes: Ascension, East Baton Rouge, East Feliciana, Iberville, Livingston, Pointe Coupee, St Helena, St James, West Baton Rouge, or West Feliciana.

### FINANCIAL AND PRACTICAL HELP

- Camps and Retreats
- Financial Assistance
- Medication
- Medical Equipment/Supplies
- Nutritional Supplements
- Prostheses
- Wigs

### INFO/EDUCATION

- Debt Management
- Entitlements/Benefits
- Home Care
- Hospice
- Insurance
- Legal
- Patient Education
- Referrals

### CANCER TYPES

- All Cancers

## | MAINE |

### **Christine B. Foundation**

21 North St.  
Bangor, ME 04401

207-517-0256

[www.chrisbfund.org](http://www.chrisbfund.org)  
[info@chrisbfund.org](mailto:info@chrisbfund.org)

Seeking to build a community of support in Eastern Maine for those affected by cancer, the Christine B. Foundation provides food and meal delivery, as well as one-on-one assistance in navigating the treatment process.

#### **FINANCIAL AND PRACTICAL HELP**

- Nutrition
- Meal Delivery

#### **INFO/EDUCATION**

- Patient Education

#### **CANCER TYPE**

- All Cancers

### **Dempsey Center**

P.O. Box 277  
Auburn, ME 04212

877-336-7287 (toll free)

[www.dempseycenter.org](http://www.dempseycenter.org)  
[info@dempseycenter.org](mailto:info@dempseycenter.org)

With locations in Lewiston and South Portland, as well as Dempsey Connects offering virtual services, Dempsey Center works to make life better for people managing the impact of cancer. They provide nutrition and fitness consultations and classes, adult counseling and support groups, youth and family counseling and programming, complementary therapies, educational workshops and meditation classes. All services and programs are provided at no cost.

#### **INFO/EDUCATION**

- Patient Education
- Referrals

#### **SPECIAL POPULATIONS**

- Children and Adolescents
- Young Adults
- Bereaved

#### **CANCER TYPE**

- All Cancers

## **Ron Foley Foundation**

See Connecticut listing.

## **| MARYLAND |**

### **Food & Friends**

See District of Columbia listing.

## Kelly's Dream

P.O. Box 36  
Perry Hall, MD 21128

410-256-7017

[www.kellysdream.org](http://www.kellysdream.org)  
[kelly@kellysdream.org](mailto:kelly@kellysdream.org)

Kelly's Dream focuses on easing the financial and emotional strain of cancer as well as raising melanoma awareness. In addition to offering a range of support in conjunction with area organizations, they are able to award financial assistance to Maryland patients through an application process.

### FINANCIAL AND PRACTICAL HELP

- Financial Assistance

### CANCER TYPES

- All Cancers

## | MASSACHUSETTS |

## Community Servings

179 Amory St.  
Jamaica Plain, MA 02130

617-522-7777

[www.servings.org](http://www.servings.org)

Community Services provides free meal delivery to cancer patients, family members and caregivers who are homebound due to illness and live in eastern Massachusetts. Community Servings serves every Boston neighborhood, as well as the 19 nearby cities and towns of Braintree, Brockton, Cambridge, Chelsea, Everett, Fitchburg, Lawrence, Leominster, Lowell, Lynn, Malden, Medford, Quincy, Randolph, Revere, Somerville, Weymouth, Winthrop and Worcester. Also provides nutrition counseling, assessments and education.

### FINANCIAL AND PRACTICAL HELP

- Meal Delivery

### INFO/EDUCATION

- Patient Education

### CANCER TYPES

- All Cancers

## Hospitality Homes

P.O. Box 15265  
Boston, MA 02215

888-595-4678 (toll free)

[www.hosp.org](http://www.hosp.org)  
[program@hosp.org](mailto:program@hosp.org)

Hospitality Homes provides short-term housing in volunteer host homes for families and friends of patients receiving medical care in the Boston area. Services are free of charge and are made possible by the generosity of volunteer hosts and supporters. Meals and transportation are not provided.

### FINANCIAL AND PRACTICAL HELP

- Lodging

### SPECIAL POPULATIONS

- Caregivers

### CANCER TYPES

- All Cancers

## Magnolia Meals at Home

See New Jersey listing.

## Ron Foley Foundation

See Connecticut listing.

## | MICHIGAN |

### **Blood Cancer Foundation of Michigan (BCFM)**

27240 Haggerty Rd.  
Suite E-15  
Farmington Hills, MI 48331

800-825-2536 (In-state only) (toll free)  
248-530-3000

[www.bloodcancerfoundationmi.org](http://www.bloodcancerfoundationmi.org)  
[info@leukemiamichigan.org](mailto:info@leukemiamichigan.org)

BCFM provides information, financial assistance and emotional support to the families in Michigan affected by leukemia, lymphoma and related blood disorders.

#### **FINANCIAL AND PRACTICAL HELP**

- Camps and Retreats
- Medication
- Prostheses
- Scholarships
- Transportation
- Wigs

#### **INFO/EDUCATION**

- Patient Education
- Referrals

#### **SPECIAL POPULATIONS**

- Children and Adolescents
- Young Adults

#### **CANCER TYPES**

- Leukemia
- Lymphoma

## | MINNESOTA |

### **Angel Foundation**

1155 Centre Pointe Dr.  
Suite 7  
Mendota Heights, MN 55120

612-627-9000

[www.mnangel.org](http://www.mnangel.org)  
[info@mnangel.org](mailto:info@mnangel.org)

Angel Foundation provides financial assistance for basic non-medical expenses like housing payments, utilities and food. They have several programs for the children of parents with cancer. The foundation serves Minneapolis and St. Paul and serves adult patients in active treatment for a cancer diagnosis.

#### **FINANCIAL AND PRACTICAL HELP**

- Camps and Retreats
- Financial Assistance
- Food
- Housing
- Utilities

#### **INFO/EDUCATION**

- Patient Education

#### **CANCER TYPES**

- All Cancers

## Open Arms of Minnesota

2500 Bloomington Ave. S  
Minneapolis, MN 55404

612-872-1152

[www.openarmsmn.org](http://www.openarmsmn.org)  
[info@openarmsmn.org](mailto:info@openarmsmn.org)

Open Arms of Minnesota cooks and delivers fresh, delicious meals to people living with cancer and other ailments. Meals are free, regardless of the client's income; qualification for services is based only on a physician referral. Delivery zone is the metro area of Minnesota within the 494/694 loop. Clients who live outside the delivery area are welcome to pick up meals from the office address above.

### FINANCIAL AND PRACTICAL HELP

- Food
- Meal Delivery

### INFO/EDUCATION

- Referrals

### CANCER TYPES

- All Cancers

## | MISSISSIPPI |

### Pink Heart Funds

P.O. Box 1047  
5095 Beatline Rd.  
Long Beach, MS 39560

228-575-8299

[pinkheartfunds.org](http://pinkheartfunds.org)

Pink Heart Funds provides women with free breast prosthetics and post-mastectomy bras as well as a resource for those seeking support and advice.

### FINANCIAL AND PRACTICAL HELP

- Prostheses
- Wigs

### CANCER TYPES

- All Cancers

## | MISSOURI |

### **Breast Cancer Foundation of the Ozarks (BCFO)**

620 W Republic Rd.  
Suite 107  
Springfield, MO 65807

866-874-1915 (toll free)  
417-862-3838

[www.bcfo.org](http://www.bcfo.org)

BCFO provides resources and support for individuals with breast cancer and their families within the local 29-county area of southwest Missouri.

#### **FINANCIAL AND PRACTICAL HELP**

- General Living Expenses
- Prostheses
- Wigs

#### **CANCER TYPE**

- Breast Cancer

### **Cancer Action**

See Kansas listing.



## Gateway to Hope

425 N New Ballas Rd.  
Suite 220  
St. Louis, MO 63141

314-569-1113

[www.gthstl.org](http://www.gthstl.org)  
[info@gthstl.org](mailto:info@gthstl.org)

Gateway to Hope's mission is to remove barriers to affordable and timely healthcare to empower people with breast cancer to face their disease and focus on healing. They offer financial assistance to patients in active treatment for breast cancer in Missouri and southern Illinois.

### FINANCIAL AND PRACTICAL HELP

- Financial Assistance
- Insurance Premiums
- Medical Equipment/Supplies
- Transportation
- Utilities

### INFO/EDUCATION

- Insurance
- Patient Education
- Referrals

### CANCER TYPES

- Breast Cancer

## GYN Cancers Alliance (GYNCA)

3023 S Fort Ave.  
Suite D  
Springfield, MO 65807

417-869-2220

[www.gynca.org](http://www.gynca.org)  
[info@gynca.org](mailto:info@gynca.org)

GYNCA provides education, resources and support to local women and caregivers affected by gynecologic cancers in Southwest Missouri.

### FINANCIAL AND PRACTICAL HELP

- General Living Expenses
- Housing
- Insurance Premiums
- Lodging
- Transportation

### CANCER TYPES

- Cervical Cancer
- Ovarian Cancer
- Uterine Cancer
- Vaginal Cancer

## | MONTANA |

### Cancer Network of Sanders County

P.O. Box 1311  
Plains, MT 59859

406-826-4278

[www.cancernetworksanderscounty.org](http://www.cancernetworksanderscounty.org)  
[pln4278@blackfoot.net](mailto:pln4278@blackfoot.net)

Cancer Network of Sanders County is a nonprofit organization that was formed to lend support to Sanders County residents with their cancer treatments. Funds are available to assist with travel expenses, medications, prostheses, wigs or other related expenses not covered by insurance.

#### FINANCIAL AND PRACTICAL HELP

- Financial Assistance
- Medication
- Prostheses
- Transportation
- Wigs

#### CANCER TYPES

- All Cancers

## | NEBRASKA |

### Angels Among Us

3858 Jones St.  
Suite A  
Omaha, NE 68105

402-934-0999

[myangelsamongus.org](http://myangelsamongus.org)  
[info@myangelsamongus.org](mailto:info@myangelsamongus.org)

Angels Among Us seeks to alleviate some of the financial hardships that come with a cancer diagnosis. Any family living in or being treated in Nebraska is eligible to apply. Once approved, families are granted a stipend for the duration of their treatment that can go to paying expenses related to utilities, transportation, communication, prescriptions, daycare and other categories. These funds are paid directly to those creditors to ensure donations are used responsibly.

#### FINANCIAL AND PRACTICAL HELP

- Financial Assistance
- Utilities

#### INFO/EDUCATION

- Patient Education

#### SPECIAL POPULATIONS

- Children and Adolescents

#### CANCER TYPES

- All Cancers

## | NEVADA |

### **Nevada Childhood Cancer Foundation**

3711 Sunset Rd.  
Las Vegas, NV 89120

702-735-8434

[www.orioncancerfoundation.org/nvccf](http://www.orioncancerfoundation.org/nvccf)  
[info@nvccf.org](mailto:info@nvccf.org)

Nevada Childhood Cancer Foundation (NCCF) provides over 45 programs and services at no cost to pediatric and adult patients and their families living in Southern Nevada. Their goal is to improve the quality of life for critically ill children, their families and adults touched by cancer in the community.

#### **FINANCIAL AND PRACTICAL HELP**

- Camps and Retreats
- Financial Assistance

#### **INFO/EDUCATION**

- Patient Education

#### **SPECIAL POPULATIONS**

- Children and Adolescents

#### **CANCER TYPES**

- All Cancers

## | NEW HAMPSHIRE |

### **Childhood Cancer Lifeline**

P.O. Box 395  
Hillsboro, NH 03244  
603-645-1489

[www.childhoodcancerlifeline.org](http://www.childhoodcancerlifeline.org)  
[info@childhoodcancerlifeline.org](mailto:info@childhoodcancerlifeline.org)

Childhood Cancer Lifeline provides education, resources and financial assistance to families affected by childhood cancer who live in New Hampshire. This involves grocery and gas gift cards, emergency funding that can be used to pay bills directly and laptops provided to school-aged children and survivors upon high school graduation.

#### **FINANCIAL AND PRACTICAL HELP**

- Camps and Retreats
- Food
- Financial Assistance
- Scholarships
- Transportation
- Utilities

#### **INFO/EDUCATION**

- Entitlements/Benefits
- Referrals

#### **SPECIAL POPULATIONS**

- Children and Adolescents
- Young Adults

#### **CANCER TYPES**

- Childhood Cancers

## Magnolia Meals at Home

See New Jersey listing.

## Ron Foley Foundation

See Connecticut listing.

## | NEW JERSEY |

### CancerCare®—New Jersey Office

One Kalisa Way  
Suite 205  
Paramus, NJ 07652

800-813-HOPE (4673) (toll free)

[www.cancercares.org](http://www.cancercares.org)  
[info@cancercares.org](mailto:info@cancercares.org)

CancerCare's comprehensive network of quality support services includes case management, telephone, online and in-person counseling and support groups, resource referrals, publications, education and financial and co-payment assistance. CancerCare's New Jersey office was opened to ensure that New Jersey residents have full access to all CancerCare services, including face-to-face counseling, support groups and community programs.

#### FINANCIAL AND PRACTICAL HELP

- Child Care
- Home Care
- Medical Equipment/Supplies
- Medication
- Prostheses
- Transportation
- Wigs

#### INFO/EDUCATION

- Entitlements/Benefits
- Home Care
- Hospice
- Insurance
- Patient Education
- Referrals

#### SPECIAL POPULATIONS

- Children and Adolescents
- Young Adults

#### CANCER TYPES

- All Cancers

## Emmanuel Cancer Foundation

77 Brant Ave.  
Suite 304  
Clark, NJ 07066

[www.emmanuelcancer.org](http://www.emmanuelcancer.org)  
[info@emmanuelcancer.org](mailto:info@emmanuelcancer.org)

The Emmanuel Cancer Foundation serves New Jersey families faced with the crisis of pediatric cancer, giving them a place to turn for comfort and support through professional in-home counseling and uniquely tailored packages of assistance.

### FINANCIAL AND PRACTICAL HELP

- Financial Assistance
- Food
- Housing
- Insurance Premiums
- Lodging
- Meal Delivery
- Transportation
- Utilities
- Wigs
- Wish Fulfillment

### INFO/EDUCATION

- Debt Management
- Insurance
- Patient Education

### SPECIAL POPULATIONS

- Children and Adolescents

### CANCER TYPES

- Childhood Cancers

## Feather Foundation

See New York listing.

## Friends of Karen

See New York listing.

## God's Love We Deliver

See New York listing.

## Kelly Anne Dolan Memorial Fund

See Pennsylvania listing.

## Linda Creed Breast Cancer Foundation

See Pennsylvania listing.

## Magnolia Meals at Home

[www.magnoliamealsathome.com](http://www.magnoliamealsathome.com)

Magnolia Meals at Home is a meal delivery program providing nourishment at no-cost for families affected by breast cancer. The program is currently available in and around Woodcliff Lake, NJ; Andover, MA; Raleigh-Durham, NC; and New Haven, CT; as well as in New York, New Hampshire and Boston. Communities in New Jersey have been added to the service area and include Clifton, Passaic, Little Falls and Totowa, as well as all of Essex County.

### FINANCIAL AND PRACTICAL HELP

- Meal Delivery

### CANCER TYPE

- All Cancers

## Ron Foley Foundation

See Connecticut listing.

## **Shirley Mae Breast Cancer Assistance Fund**

P.O. Box 3265  
Margate, New Jersey 08402

609-0822-7172

[www.shirleymaefund.org](http://www.shirleymaefund.org)  
[shirleymaefund@aol.com](mailto:shirleymaefund@aol.com)

The Shirley Mae Fund seeks to assist those with a breast cancer diagnosis who demonstrate a financial need by offering relief for the unanticipated financial burden of purchasing prescribed breast cancer medications that exceed insurance cover, breast prostheses, wigs and other related items.

### **FINANCIAL AND PRACTICAL HELP**

- Medication
- Prostheses
- Wigs

### **INFO/EDUCATION**

- Patient Education

### **CANCER TYPES**

- Breast Cancer

## **Tom Coughlin Jay Fund Foundation**

See Florida listing.

## **Unite for HER**

See Pennsylvania listing.

## | NEW MEXICO |

### Cancer Services of New Mexico

P.O. Box 51735  
Albuquerque, NM 87181

505-259-9583

[www.cancerservicesnm.org](http://www.cancerservicesnm.org)  
[info@cancerservicesnm.org](mailto:info@cancerservicesnm.org)

Cancer Services of New Mexico supports New Mexicans who have cancer and their loved ones through services such as retreats, resource bags, legal assistance and help with insurance and paperwork.

#### FINANCIAL AND PRACTICAL HELP

- Camps and Retreats

#### INFO/EDUCATION

- Entitlements/Benefits
- Insurance
- Legal
- Patient Education
- Referrals

#### SPECIAL POPULATIONS

- Children and Adolescents
- Young Adults

#### CANCER TYPES

- All Cancers

## Children's Cancer Fund of New Mexico

112 14th St. SW  
Albuquerque, NM 87102

505-243-3618

[www.ccfnm.org](http://www.ccfnm.org)  
[ccfnm@ccfnm.org](mailto:ccfnm@ccfnm.org)

Children's Cancer Fund of New Mexico provides financial support to families affected by childhood cancer who live in New Mexico. Financial assistance is provided to pay for non-medical expenses such as rent, utilities, lodging and transportation.

#### FINANCIAL AND PRACTICAL HELP

- General Living Expenses
- Housing
- Lodging
- Prostheses
- Transportation
- Utilities
- Wigs
- Other – Funeral Expenses

#### SPECIAL POPULATIONS

- Children and Adolescents

#### CANCER TYPES

- Childhood Cancers



## | NEW YORK |

### Babylon Breast Cancer Coalition (BBCC)

218 N Wellwood Ave.  
Suite 2  
Lindenhurst, NY 11757

631-893-4110

[www.babylonbreastcancer.org](http://www.babylonbreastcancer.org)  
[info@babylonbreastcancer.org](mailto:info@babylonbreastcancer.org)

The BBCC provides support, referrals and financial assistance to breast or gynecological cancer patients in Babylon who are in active treatment. The coalition offers various services, including house cleaning, transportation to and from appointments, help purchasing prostheses, salon services and more. They can also provide financial help with funeral costs or services like child care and house cleaning for three months following the death of a loved one due to breast cancer.

#### FINANCIAL AND PRACTICAL HELP

- Co-Payments
- Financial Assistance
- Food
- Insurance Premiums
- Meal Delivery
- Scholarships
- Transportation
- Utilities
- Wigs

#### INFO/EDUCATION

- Patient Education

#### CANCER TYPES

- Breast Cancer
- Cervical Cancer
- Ovarian Cancer
- Uterine Cancer
- Vaginal Cancer
- Vulvar Cancer

### Cancer Advocacy Project

42 W 44th St.  
New York, NY 10036

212-382-6727

[www.citybarjusticecenter.org](http://www.citybarjusticecenter.org)  
[cap@nycbar.org](mailto:cap@nycbar.org)

The City Bar Justice Center's Cancer Advocacy Project assists cancer patients, survivors and caregivers with drafting no-cost life-planning documents, challenging unjust private health insurance decisions and providing advice on cancer-related employment discrimination. For individual assistance, individuals must meet the project's financial eligibility requirements.

#### FINANCIAL AND PRACTICAL HELP

- Legal

#### INFO/EDUCATION

- Debt Management
- Insurance
- Legal

#### CANCER TYPES

- All Cancers

## Cancer Support Team

2900 Westchester Ave.  
Suite 103  
Purchase, NY 10577

914-777-2777

[www.cancersupportteam.org](http://www.cancersupportteam.org)  
[cst@cancersupportteam.org](mailto:cst@cancersupportteam.org)

Cancer Support Team's mission is to enhance the quality of life of patients and families affected by cancer at any stage of the disease, offering nursing, case management, counseling, rides to and from treatment and small financial grants at no cost to anyone with a diagnosis of cancer who lives in southern Westchester.

### FINANCIAL AND PRACTICAL HELP

- Co-Payments
- Financial Assistance
- Insurance Premiums
- Medical Equipment/Supplies
- Medical Expenses
- Nutritional Supplements
- Transportation
- Utilities

### INFO/EDUCATION

- Entitlements/Benefits
- Home Care
- Hospice
- Insurance
- Legal
- Patient Education
- Referrals

### SPECIAL POPULATIONS

- Caregivers
- Children and Adolescents
- Young Adults
- Siblings
- Bereaved

### CANCER TYPES

- All Cancers

## CancerCare®—Long Island Office

6800 Jericho Tpke.  
Suite 120W  
Syosset, NY 11791

800-813-HOPE (4673) (toll free)  
516-364-8130

[www.cancercare.org](http://www.cancercare.org)

CancerCare's comprehensive network of quality support services includes case management, telephone, online and in-person counseling and support groups, resource referrals, publications, education and financial and co-payment assistance. CancerCare's Long Island office was opened to ensure that Long Island residents have full access to all CancerCare services, including face-to-face counseling and support groups.

### FINANCIAL AND PRACTICAL HELP

- Child Care
- Home Care
- Medical Equipment/Supplies
- Medication
- Prostheses
- Transportation
- Wigs

### SPECIAL POPULATIONS

- Children and Adolescents
- Young Adults

### CANCER TYPES

- All Cancers

### INFO/EDUCATION

- Entitlements/Benefits
- Home Care
- Hospice
- Insurance
- Patient Education
- Referrals

## Coalition for Women's Cancers at Stony Brook Southampton Hospital

The Ellen Hermanson Breast Center  
at Southampton Hospital  
240 Meeting House Ln.  
Southampton, NY 11968

631-726-8715

[www.cwcsshh.org](http://www.cwcsshh.org)  
[sroden@cwcsshh.org](mailto:sroden@cwcsshh.org)

The mission of The Coalition for Women's Cancers at Stony Brook Southampton Hospital is to create and sustain a supportive network in the community for women affected by breast and gynecologic cancers. CWC focuses on education, early detection and empowerment to bring about better health care and improved quality of life. Women on the East End of Long Island (towns of East Hampton, Southampton and Shelter Island) diagnosed with breast and gynecological cancers are offered support, strength and hope.

### FINANCIAL AND PRACTICAL HELP

- Camps and Retreats
- Child Care
- Co-Payments
- Financial Assistance
- Insurance Premiums
- Medical Expenses
- Medication
- Transportation
- Utilities
- Wigs

### INFO/EDUCATION

- Fundraising
- Patient Education
- Referrals

### CANCER TYPES

- Breast Cancer
- Cervical Cancer
- Endometrial Cancer
- Ovarian Cancer
- Urethral Cancer
- Uterine Cancer
- Vaginal Cancer
- Vulvar Cancer

## CURE Childhood Cancer Association

200 Westfall Rd.  
Rochester, NY 14620

585-473-0180

[www.curekidscancer.com](http://www.curekidscancer.com)  
[staff@curekidscancer.com](mailto:staff@curekidscancer.com)

CURE Childhood Cancer Association provides information, support programs and services and financial assistance to families in the Rochester and the Finger Lakes regions who are affected by childhood cancer. The association also provides parking passes and emergency financial assistance.

### FINANCIAL AND PRACTICAL HELP

- Co-Payments
- Financial Assistance
- Home Care
- Insurance Premiums
- Medical Equipment/Supplies
- Medical Expenses
- Nutritional Supplements
- Utilities

### INFO/EDUCATION

- Patient Education

### SPECIAL POPULATIONS

- Children and Adolescents
- Young Adults

### CANCER TYPES

- Childhood Cancers

## Cure Mommy's Breast Cancer

P.O. Box 585  
N. Bellmore, NY 11710

516-967-1148

[www.curemommy.org](http://www.curemommy.org)  
[curemommy@gmail.com](mailto:curemommy@gmail.com)

Supports cancer patients living in Long Island (Nassau and Suffolk counties only) with financial assistance to cover non-medical costs such as transportation, rent and utility payments, house cleaning and insurance premiums.

### FINANCIAL AND PRACTICAL HELP

- General Living Expenses
- Housing
- Insurance Premiums
- Lodging
- Medical Equipment/Supplies
- Prostheses
- Scholarships
- Transportation
- Utilities
- Wigs

### SPECIAL POPULATIONS

- Children and Adolescents
- Young Adults

### CANCER TYPE

- Breast Cancer

## Embrace Your Sisters

P.O. Box 322  
Canandaigua, NY 14424

585-624-9690

[www.embraceyoursisters.org](http://www.embraceyoursisters.org)

Embrace Your Sisters provides short-term emergency financial assistance to breast cancer patients in the Finger Lakes region, including Livingston, Monroe, Ontario, Seneca, Steuben, Wayne and Yates counties. The organization also provides referrals to other agencies for further assistance.

### FINANCIAL AND PRACTICAL HELP

- Co-Payments
- Hearing Aids
- Housing
- Medical Equipment/Supplies
- Medical Expenses
- Medication
- Prostheses
- Reconstruction
- Utilities

### INFO/EDUCATION

- Patient Education
- Referrals

### CANCER TYPE

- Breast Cancer

## The Family Center (TFC)

493 Nostrand Ave.  
3rd Floor  
Brooklyn, NY 11216

800-219-4522 (toll free)  
718-230-1379

[www.thefamilycenter.org](http://www.thefamilycenter.org)  
[info@thefamilycenter.org](mailto:info@thefamilycenter.org)

The Family Center works to keep families stronger, longer. Social, legal and health experts work with New Yorkers confronting a family crisis or loss. It offers hands-on support for a client's immediate needs, then helps them plan for a stable and sustainable future. The center focuses on education and research and provides free legal, social and support services for families in the New York City area. TFC has offices in Manhattan and Brooklyn and serves New Yorkers from all five boroughs.

### INFO/EDUCATION

- Entitlements/Benefits
- Legal
- Patient Education
- Referrals

### SPECIAL POPULATIONS

- Children and Adolescents
- Young Adults
- Other – Families and Grandparents

### CANCER TYPES

- All Cancers

## Feather Foundation

P.O. Box 628  
Maplewood, NJ 07040

862-702-9559

[www.thefeatherfoundation.org](http://www.thefeatherfoundation.org)  
[info@thefeatherfoundation.org](mailto:info@thefeatherfoundation.org)

Through the Feather Foundation, financial assistance is available to NY and NJ residents and is intended for child care-related expenses. Emotional support includes online groups, guidance and tips on parenting with cancer and self-care with cancer. The Feather Foundation also provides a resource list of other assistance available for parents with cancer.

### FINANCIAL AND PRACTICAL HELP

- Child Care
- Financial Assistance

### INFO/EDUCATION

- Patient Education

### CANCER TYPES

- All Cancers

## Friends of Karen

118 Titicus Rd.  
North Salem, NY 10560

914-617-4057  
914-617-4045 (Spanish)

[www.friendsofkaren.org](http://www.friendsofkaren.org)

Friends of Karen provides emotional, financial and advocacy support to children with cancer or another life-threatening illness and their families, from diagnosis through treatment. The Sibling Support program helps youngsters better understand and cope with their sister's or brother's illness and how it affects family life. Also offers a Gifts For Children program and bereavement support. Friends of Karen serves all qualified families within 22 counties of New York, New Jersey and Connecticut without regard to race, religion or national origin.

### FINANCIAL AND PRACTICAL HELP

- General Living Expenses
- Housing
- Lodging
- Medical Equipment/Supplies
- Medical Expenses
- Medication
- Transportation

### SPECIAL POPULATIONS

- Children and Adolescents
- Young Adults
- Siblings
- Bereaved

### CANCER TYPES

- Childhood Cancers

## God's Love We Deliver

166 Avenue of the Americas  
New York, NY 10013

800-747-2023 (toll free)  
212-294-8100

[www.godslovewedeliver.org](http://www.godslovewedeliver.org)  
[info@glwd.org](mailto:info@glwd.org)

God's Love We Deliver provides free meal delivery, nutrition education, counseling and advocacy to patients of all ages who have cancer or other serious illnesses and are living in the five boroughs of New York City, Westchester and Nassau counties, and Hudson county, NJ.

### FINANCIAL AND PRACTICAL HELP

- Food
- Meal Delivery

### INFO/EDUCATION

- Patient Education
- Referrals

### CANCER TYPES

- All Cancers

## Lucia's Angels

10 Oak St.  
Southampton, NY 11968

631-204-9331

[www.luciasangels.org](http://www.luciasangels.org)  
[info@luciasangels.org](mailto:info@luciasangels.org)

Lucia's Angels is a foundation committed to helping women and families on eastern Long Island with late-stage women's cancers including breast cancer, ovarian cancer, cervical cancer and uterine cancer. The organization provides help and funding for a wide range of expenses, including babysitting, heating bills, health insurance premiums, automobile repair, groceries, ambulatory trips, therapeutic massage, salon services and wigs. Coverage is the Eastern End of Long Island, New York from Riverhead to Montauk and Riverhead to Orient and Shelter Island.

### FINANCIAL AND PRACTICAL HELP

- Food
- General Living Expenses
- Lodging
- Medical Equipment/Supplies
- Medical Expenses
- Medication
- Scholarships
- Transportation
- Utilities
- Wigs
- Wish Fulfillment

### CANCER TYPES

- Stage 4 of those listed:
  - » Breast Cancer
  - » Cervical Cancer
  - » Endometrial Cancer
  - » Ovarian Cancer
  - » Urethral Cancer
  - » Uterine Cancer
  - » Vaginal Cancer
  - » Vulvar Cancer

### INFO/EDUCATION

- Home Care
- Hospice
- Patient Education
- Referrals

## Magnolia Meals at Home

See New Jersey listing.

## **New York Legal Assistance Group (NYLAG)**

7 Hanover Sq.  
18th Floor  
New York, NY 10004

212-613-5000

[www.nylag.org](http://www.nylag.org)  
[info@nylag.org](mailto:info@nylag.org)

NYLAG provides pro bono legal assistance to individuals of all ages living in New York City who have been erroneously denied public benefits or whose benefits have been wrongfully delayed. Services include food stamps, health care, home care, Medicaid, Medicare, Social Security Disability (SSD) and Supplemental Security Insurance (SSI).

### **FINANCIAL AND PRACTICAL HELP**

- Legal

### **INFO/EDUCATION**

- Legal

### **CANCER TYPES**

- All Cancers

## **Pets Are Wonderful Support (PAWS)**

134 W 29th St.  
Suite 802  
New York, NY 10001

212-203-4760

[www.pawsny.org](http://www.pawsny.org)  
[referrals@pawsny.org](mailto:referrals@pawsny.org)

PAWS helps New York City's most vulnerable residents remain with their pets by delivering critical programs and services through a community of partners and volunteers. Eligible clients must meet income requirements, have a physical disability or illness and be a resident of New York City.

### **FINANCIAL AND PRACTICAL HELP**

- Pet Care or Supplies

### **INFO/EDUCATION**

- Referrals

### **CANCER TYPES**

- All Cancers



## Ron Foley Foundation

See Connecticut listing.

## SAGE: Advocacy and Services for LGBTQ+ Elders

305 Seventh Ave.  
15th Floor  
New York, NY 10001

212-741-2247

[www.sageusa.org](http://www.sageusa.org)  
[info@sageusa.org](mailto:info@sageusa.org)

In partnership with its constituents and allies, SAGE works to achieve a high quality of life for LGBT older people, supports and advocates for their rights, fosters a greater understanding of aging in all communities and promotes positive images of LGBT life in later years. SAGE's New York City-based services are for LGBT older adults and their family and friend caregivers.

### FINANCIAL AND PRACTICAL HELP

- Financial Assistance
- Home Care

### INFO/EDUCATION

- Entitlements/Benefits
- Home Care
- Legal
- Referrals

### SPECIAL POPULATIONS

- Caregivers
- LGBTQ+
- Bereaved

### CANCER TYPES

- All Cancers

## **SIS: Sustain Inspire Survive**

**300 Hylan Dr.  
Suite 6  
Box 111  
Rochester, NY 14623**

**585-662-5812**

**[www.helpsis.org](http://www.helpsis.org)  
[contact@helpsis.org](mailto:contact@helpsis.org)**

SIS helps people coping with breast cancer in the Greater Rochester area, including Allegany, Erie, Genesee, Livingston, Monroe, Ontario, Orleans, Seneca, Steuben, Yates, Wayne and Wyoming counties. SIS is committed to improving the quality of life of those with breast cancer by providing financial assistance, essential services and quality-of-life enhancements during treatment to those in need.

### **FINANCIAL AND PRACTICAL HELP**

- General Living Expenses
- Medical Expenses
- Prostheses
- Transportation
- Wigs

### **INFO/EDUCATION**

- Home Care
- Hospice
- Patient Education
- Referrals

### **CANCER TYPE**

- Breast Cancer

## **Tom Coughlin Jay Fund Foundation**

**See Florida listing.**

## | NORTH CAROLINA |

### **Cancer Services, Inc.**

3175 Maplewood Ave.  
Winston-Salem, NC 27103

800-228-7421 (In-state only) (toll free)  
336-760-9983

[www.cancerservicesonline.org](http://www.cancerservicesonline.org)  
[csi1955@cancerservicesonline.org](mailto:csi1955@cancerservicesonline.org)

Cancer Services, Inc. provides medication and financial assistance, surgical supplies and equipment, transportation assistance, wigs, prostheses and peer support. They provide direct financial assistance to people in Forsyth, Davie, Stokes and Yadkin counties. Non-residents of these counties needing medication and financial assistance may still call and be referred to services in the community as well as national resources. Non-financial assistance is provided free of charge regardless of where you reside.

#### **FINANCIAL AND PRACTICAL HELP**

- Co-Payments
- Financial Assistance
- Medical Equipment/Supplies
- Medication
- Nutritional Supplements
- Prostheses
- Transportation
- Wigs

#### **INFO/EDUCATION**

- Patient Education
- Referrals

#### **CANCER TYPES**

- All Cancers

### **Lung Cancer Initiative of North Carolina**

5171 Glenwood Ave.  
Suite 401  
Raleigh, NC 27612

919-784-0410

[www.lungcancerinitiativenc.org](http://www.lungcancerinitiativenc.org)  
[info@lungcancerinitiativenc.org](mailto:info@lungcancerinitiativenc.org)

The Lung Cancer Initiative of North Carolina seeks to support those affected by lung cancer through research, awareness, education and access to programs across North Carolina.

#### **FINANCIAL AND PRACTICAL HELP**

- Financial Assistance
- Transportation

#### **INFO/EDUCATION**

- Patient Education

#### **CANCER TYPE**

- Lung Cancer

## | NORTH DAKOTA |

### Hope Foundation

1451 44th Ave. South  
Unit E  
Grand Forks, ND 58201

701-787-5800

[www.hopefoundationnd.org](http://www.hopefoundationnd.org)  
[contact@hopefoundationnd.org](mailto:contact@hopefoundationnd.org)

The Hope Foundation of North Dakota is charged with the mission of supporting the education, screening, research and financial assistance of cancer patients in eastern North Dakota and western Minnesota. They are able to provide financial assistance and referrals for transportation, lodging and other expenses for those undergoing cancer treatment.

#### FINANCIAL AND PRACTICAL HELP

- Financial Assistance

#### INFO/EDUCATION

- Patient Education

#### CANCER TYPES

- All Cancers

## | OHIO |

### Cancer Patient Services (CPS)

1800 N Blanchard St.  
Suite 120  
Findlay, OH 45840

419-423-0286

[www.cancerpatientservices.org](http://www.cancerpatientservices.org)  
[support@cancerpatientservices.org](mailto:support@cancerpatientservices.org)

The mission of CPS is to help improve the quality of life for Hancock County cancer patients and their families. This organization assists people who live or work in Hancock County.

#### FINANCIAL AND PRACTICAL HELP

- Co-Payments
- Financial Assistance
- Insurance Premiums
- Medical Equipment/Supplies
- Medical Expenses
- Nutritional Supplements
- Wigs

#### INFO/EDUCATION

- Patient Education
- Referrals

#### CANCER TYPES

- All Cancers

## Cancer Services of Erie County

505 E Perkins Ave.  
Sandusky, OH 44870

800-401-9054 (toll free)  
419-626-4548

[www.cancerresources.org](http://www.cancerresources.org)  
[cancerservices@bex.net](mailto:cancerservices@bex.net)

Cancer Services of Erie County is dedicated to the emotional and financial care of cancer patients and their families in Erie County and the Norwalk area. They provide medical equipment and supplies, nutritional supplements, travel cost reimbursement, post-mastectomy prostheses and bras and financial assistance for cancer-related medications.

### FINANCIAL AND PRACTICAL HELP

- Medical Equipment/Supplies
- Medication
- Nutritional Supplements
- Prostheses
- Transportation
- Wigs

### CANCER TYPES

- All Cancers

## The Littlest Heroes

P.O. Box 470188  
Cleveland, OH 44147

440-498-9200

[www.thelittlestheroes.org](http://www.thelittlestheroes.org)  
[volunteer@thelittlestheroes.org](mailto:volunteer@thelittlestheroes.org)

The Littlest Heroes offers limited, short-term financial assistance and programs and services to families living in northeast Ohio who are affected by childhood cancer.

### FINANCIAL AND PRACTICAL HELP

- General Living Expenses

### SPECIAL POPULATIONS

- Children and Adolescents
- Young Adults

### CANCER TYPES

- Childhood Cancers

## | OKLAHOMA |

### Tenaciously Teal

720 W Wilshire Blvd.  
Suite 117  
Oklahoma City, OK 73116

405-753-4496

[www.tteal.org](http://www.tteal.org)  
[tenaciouslyteal@gmail.com](mailto:tenaciouslyteal@gmail.com)

Tenaciously Teal is dedicated to supporting cancer fighters and their families throughout cancer treatment by providing encouragement, support and Cancer Care Packs with helpful items for those going through cancer treatment. They can provide gas and grocery card assistance and an empowerment event for women facing hair loss from cancer treatment.

#### FINANCIAL AND PRACTICAL HELP

- Financial Assistance

#### INFO/EDUCATION

- Fundraising

#### CANCER TYPES

- All Cancers

## | OREGON |

### Samaritan Cancer Resource Centers

400 Hickory St. NW  
Albany, OR 97321

877-311-4686 (toll free)  
541-812-5888

[www.samhealth.org/scrc](http://www.samhealth.org/scrc)  
[cancerresourcecenter@samhealth.org](mailto:cancerresourcecenter@samhealth.org)

Samaritan Cancer Resource Centers partner with anyone touched by cancer to provide the support they need to live with strength, determination and hope into the future. They provide education, renewal and connection to local, regional and national resources. There is a second center located in Corvallis.

#### FINANCIAL AND PRACTICAL HELP

- Financial Assistance
- Home Care
- Medical Expenses
- Medication
- Transportation
- Wigs

#### INFO/EDUCATION

- Home Care
- Hospice
- Patient Education
- Referrals

#### CANCER TYPES

- All Cancers

## | PENNSYLVANIA |

### **Kelly Anne Dolan Memorial Fund**

580 Virginia Dr.  
Suite 110  
Fort Washington, PA 19034

215-643-0763

[www.dolanfund.org](http://www.dolanfund.org)

The Kelly Anne Dolan Memorial Fund provides financial assistance to families in Pennsylvania, New Jersey and Delaware who have a chronically ill child. Requests for assistance must be made through a social worker or health care provider and are usually processed within 72 hours.

#### **FINANCIAL AND PRACTICAL HELP**

- Camps and Retreats
- General Living Expenses
- Housing
- Lodging
- Medical Equipment/Supplies
- Transportation

#### **INFO/EDUCATION**

- Patient Education
- Referrals

#### **SPECIAL POPULATIONS**

- Children and Adolescents
- Young Adults

#### **CANCER TYPES**

- Childhood Cancers

### **Linda Creed Breast Cancer Foundation**

614 S Eighth St. #277  
Philadelphia, PA 19147

877-99-CREED (toll free)  
215-564-3700

[www.lindacreed.org](http://www.lindacreed.org)  
[contact@lindacreed.org](mailto:contact@lindacreed.org)

Linda Creed provides an information and support line, free mammograms and a patient emergency fund to breast cancer patients in the greater Philadelphia and Pocono regions. Funds cover non-medical expenses such as rent and utilities.

#### **FINANCIAL AND PRACTICAL HELP**

- Financial Assistance
- Housing
- Screening
- Utilities

#### **INFO/EDUCATION**

- Patient Education
- Referrals

#### **CANCER TYPE**

- Breast Cancer

## Unite for HER

127 E Chestnut St.  
West Chester, PA 19380

610-883-1177

[www.uniteforher.org](http://www.uniteforher.org)  
[info@uniteforher.org](mailto:info@uniteforher.org)

Unite for HER seeks to bridge the gap between the medical and wellness communities by funding and delivering complementary therapies that support the physical and emotional needs of those with breast or ovarian cancer during treatment and beyond. Therapies include medical acupuncture, oncology massage, yoga, Reiki, nutritional counseling and psychological counseling. Serves women in the Philadelphia region (Bucks, Chester, Delaware, Montgomery and Philadelphia counties) as well as Camden and Mercer counties in New Jersey and New Castle county in Delaware.

### INFO/EDUCATION

- Patient Education

### CANCER TYPE

- Breast Cancer
- Ovarian Cancer

## Vickie's Angel Foundation

511 Bridge St.  
New Cumberland, PA 17070

717-774-3800

[www.vickiesangelfoundation.org](http://www.vickiesangelfoundation.org)  
[info@vawalk.org](mailto:info@vawalk.org)

Vickie's Angel Foundation helps families fighting cancer who cannot pay their bills due to the costs of going through cancer treatment. Their goal is to take away the financial worry from the family, providing a temporary bridge that allows them to focus entirely on beating this disease. They cover nine central PA counties - Adams, Cumberland, Dauphin, Franklin, Lancaster, Lebanon, Perry, Schuylkill and York.

### FINANCIAL AND PRACTICAL HELP

- Financial Assistance

### CANCER TYPES

- All Cancers



## | RHODE ISLAND |

### **A Wish Come True**

1010 Warwick Ave.  
Warwick, RI 02888

401-781-9199

[www.awish.org](http://www.awish.org)  
[awish@awishcometrue.org](mailto:awish@awishcometrue.org)

A Wish Come True is dedicated to granting the wish of medically qualified children in Rhode Island and parts of southeastern Massachusetts. They work with families, donors and volunteers to make children's wishes come true.

#### **FINANCIAL AND PRACTICAL HELP**

- Wish Fulfillment

#### **CANCER TYPES**

- Childhood Cancers

### **Ron Foley Foundation**

See Connecticut listing.

## | SOUTH CAROLINA |

### **Cancer Association of Anderson (CAA)**

215 E Calhoun St.  
Anderson, SC 29621

864-222-3500

[www.cancerassociationanderson.org](http://www.cancerassociationanderson.org)  
[angela@caanderson.org](mailto:angela@caanderson.org)

CAA provides financial assistance for costs including prescription medicine and co-pays for medicine, local travel, money for long-distance travel to medical centers out of the area and help paying health insurance premiums to people who live in Anderson County, SC, and are in active treatment for cancer.

#### **FINANCIAL AND PRACTICAL HELP**

- Financial Assistance
- Insurance Premiums
- Transportation

#### **INFO/EDUCATION**

- Hospice
- Patient Education
- Referrals

#### **SPECIAL POPULATIONS**

- Caregivers

#### **CANCER TYPES**

- All Cancers

### **Cancer Association of Spartanburg & Cherokee Counties, Inc.**

295 E Main St.  
Suite 100  
Spartanburg, SC 29302

864-582-0771

[www.cancerassociation.org](http://www.cancerassociation.org)  
[info@cancerassociation.org](mailto:info@cancerassociation.org)

The Cancer Association of Spartanburg & Cherokee Counties, Inc., is dedicated to providing quality-of-life services to area residents facing the challenges of cancer through screenings, education and direct services. It serves Spartanburg and Cherokee counties in South Carolina.

#### **FINANCIAL AND PRACTICAL HELP**

- Co-Payments
- Medical Equipment/Supplies
- Nutritional Supplements
- Protheses
- Screening
- Transportation
- Wigs

#### **INFO/EDUCATION**

- Patient Education
- Referrals

#### **CANCER TYPES**

- All Cancers

## Cancer Society of Greenville County

113 Mills Ave.  
Greenville, SC 29605

864-232-8439

[www.cancersocietygc.org](http://www.cancersocietygc.org)  
[info@cancersocietygc.org](mailto:info@cancersocietygc.org)

The Cancer Society of Greenville County provides education, support groups and medical supplies to cancer patients living in Greenville and Pickens counties. Its financial assistance program helps patients with medication costs, limited non-medical costs such as rent and utilities and transportation assistance.

### FINANCIAL AND PRACTICAL HELP

- Camps and Retreats
- Co-Payments
- Financial Assistance
- Home Care
- Lodging
- Medical Equipment/Supplies
- Medical Expenses
- Nutritional Supplements
- Prostheses
- Scholarships
- Screening
- Transportation
- Utilities
- Wigs

### INFO/EDUCATION

- Fundraising
- Hospice
- Patient Education
- Referrals

### CANCER TYPES

- All Cancers

## | SOUTH DAKOTA |

## Horizon Health Foundation

125 S Main St.  
P.O. Box 728  
Howard, SD 57349

605-772-4553

[horizonhealthfoundation.com](http://horizonhealthfoundation.com)

The Horizon Health Foundation supports Horizon Health Care, Inc., which serves nearly 22 rural communities with health care access at a local level. The Foundation's mission is to ensure that over 27,500 patients continue to receive community health services annually. Among the range of medical issues they help cover are those related to a cancer diagnosis.

### FINANCIAL AND PRACTICAL HELP

- Financial Assistance

### INFO/EDUCATION

- Patient Education

### CANCER TYPES

- All Cancers

## | TENNESSEE |

### Tennessee Breast Cancer Coalition

106 Mission Ct.  
Suite 602  
Franklin, TN 37067

615-377-8777

[www.tbcc.org](http://www.tbcc.org)

The Tennessee Breast Cancer Coalition provides financial assistance to Tennessee men and women in active treatment for breast cancer. Assistance is given for rent, mortgage or utilities. Medical bills, insurance premiums and prescription drugs may also be considered. Long-term hormone therapy is not considered active treatment. The awarding of funds is at the discretion of the committee and an individual will be helped only one time.

#### FINANCIAL AND PRACTICAL HELP

- Financial Assistance
- Housing
- Insurance Premiums
- Medical Expenses
- Medication
- Utilities

#### CANCER TYPE

- Breast Cancer

## | TEXAS |

### The Bridge Breast Network

4000 Junius St.  
Dallas, TX 75246

877-258-1396 (toll free)  
214-821-3820

[www.bridgebreast.org](http://www.bridgebreast.org)  
[info@bridgebreast.org](mailto:info@bridgebreast.org)

The Bridge Breast Network provides access to diagnostic and treatment services for breast cancer to low-income, uninsured and underinsured individuals in North Texas. Applicants must reside in one of the following counties: Bowie, Collin, Cooke, Dallas, Delta, Ellis, Erath, Fannin, Grayson, Gregg, Harrison, Henderson, Hood, Hopkins, Hunt, Johnson, Kaufman, Lamar, Leon, Navarro, Parker, Putnam, Rains, Red River, Rockwall, Tarrant, Titus, Van Zandt and Wood counties.

#### FINANCIAL AND PRACTICAL HELP

- Medical Equipment/Supplies
- Medical Expenses
- Prostheses
- Screening
- Wigs

#### INFO/EDUCATION

- Patient Education
- Referrals

#### SPECIAL POPULATIONS

- Young Adults

#### CANCER TYPES

- Breast Cancer

## Cancer Care Services

623 S Henderson St.  
Fort Worth, TX 76104

817-921-0653

[www.cancercareservices.org](http://www.cancercareservices.org)  
[info@cancercareservices.org](mailto:info@cancercareservices.org)

Cancer Care Services supports cancer patients, care for caregivers, and empowers survivors to reduce the impact of cancer in the community. They provide financial services on a sliding scale that is based upon household size and income for clients in Tarrant County.

### FINANCIAL AND PRACTICAL HELP

- Camps and Retreats
- Insurance Premiums
- Medication
- Nutritional Supplements

### INFO/EDUCATION

- Referrals

### CANCER TYPES

- All Cancers

## Cancer Services Network

1218 N Fourth St.  
Suite 213  
Abilene, TX 79601

325-672-0040

[www.cancerservicesnetwork.org](http://www.cancerservicesnetwork.org)

Cancer Services Network provides advocacy, emergency funds, insurance continuation, medical supply services, nutritional supplements, prescription assistance and transportation reimbursement to people with cancer living in a 19-county region of west central Texas: Brown, Callahan, Coleman, Comanche, Eastland, Fisher, Haskell, Jones, Kent, Knox, Mitchell, Nolan, Runnels, Scurry, Shackelford, Stephens, Stonewall, Taylor and Throckmorton. Requires referral from a physician or social worker.

### FINANCIAL AND PRACTICAL HELP

- Financial Assistance
- Insurance Premiums
- Medical Equipment/Supplies
- Medication
- Nutritional Supplements
- Prostheses
- Transportation
- Utilities
- Wigs

### INFO/EDUCATION

- Patient Education
- Referrals

### SPECIAL POPULATIONS

- Caregivers

### CANCER TYPES

- All Cancers

## Community Cancer Association

2911 Herring Ave.  
Suite 212  
Waco, TX 76708

254-202-8082

[www.wacocancer.org](http://www.wacocancer.org)  
[info@wacocancer.org](mailto:info@wacocancer.org)

The Community Cancer Association provides financial assistance for prescriptions, supplies, wigs and transportation for out-of-town medical treatment to cancer patients in McLennan County.

### FINANCIAL AND PRACTICAL HELP

- Medical Equipment/Supplies
- Medication
- Protheses
- Transportation
- Wigs

### CANCER TYPES

- All Cancers

## The Rose

12700 N Featherwood Dr.  
Suite 260  
Houston, TX 77034

281-484-4708

[www.the-rose.org](http://www.the-rose.org)

The Rose is a nonprofit breast health care center that provides medical care for all women regardless of their ability to pay or their place of residence. Services are also available at a secondary location in Bellaire.

### FINANCIAL AND PRACTICAL HELP

- Medical Expenses

### CANCER TYPE

- Breast Cancer

## WINGS

2800 NW Loop 410  
San Antonio, TX 78230

210-946-9464

[www.texaswings.org](http://www.texaswings.org)  
[info@texaswings.org](mailto:info@texaswings.org)

WINGS brings top quality breast care to men and women in central and south Texas regardless of their ability to pay. This includes funding for breast health care services, including surgery, chemotherapy, radiation therapy and lab charges. WINGS only pays for services offered through their provider network, which includes physicians and treatment facilities in 46 Texas counties.

### FINANCIAL AND PRACTICAL HELP

- Medical Expenses
- Medication

### CANCER TYPE

- Breast Cancer

## | UTAH |

### Needs Beyond Medicine Relief Program

P.O. Box 712043  
Salt Lake City, UT 84171

385-645-4626

[www.needsbeyondmedicine.org](http://www.needsbeyondmedicine.org)  
[info@needsbeyondmedicine.org](mailto:info@needsbeyondmedicine.org)

Needs Beyond Medicine is dedicated to helping cancer patients pay for non-medical expenses while undergoing medical treatment. Their mission is to decrease the burden of cancer by increasing awareness, education and relief to cancer patients. They are able to provide some financial support for non-medical expenses for those undergoing treatment.

### FINANCIAL AND PRACTICAL HELP

- Financial Assistance

### CANCER TYPES

- All Cancers

## | VERMONT |

### **Cancer Patient Support Foundation**

5399 Williston Rd.  
Williston, VT 05495

888-277-3707 (toll free)

[www.cpsf.org](http://www.cpsf.org)

The Cancer Patient Support Foundation (CPSF) is an independent, nonprofit organization dedicated to enhancing and furthering the availability of comprehensive psychosocial services to cancer patients and their families throughout Vermont and northern New York. The Foundation's vision is that all who face cancer can do so with dignity, confidence and serenity.

#### **FINANCIAL AND PRACTICAL HELP**

- Financial Assistance

#### **INFO/EDUCATION**

- Patient Education

#### **CANCER TYPES**

- All Cancers

## | VIRGINIA |

### **CancerLINC**

200 S Third St.  
Richmond, VA 23219

804-562-0371

[www.cancerlinc.org](http://www.cancerlinc.org)  
[clientservices@cancerlinc.org](mailto:clientservices@cancerlinc.org)

CancerLINC provides assistance, education and referral to legal resources, financial guidance and community services. Serves cancer patients and their families in the Greater Richmond area, including the city of Richmond, Petersburg, Hopewell, Colonial Heights and the 13 surrounding counties of Amelia, Caroline, Charles City, Chesterfield, Dinwiddie, Goochland, Hanover, Henrico, King William, New Kent, Powhatan, Prince George and Sussex.

#### **INFO/EDUCATION**

- Debt Management
- Entitlements/Benefits
- Insurance
- Legal
- Patient Education
- Referrals

#### **CANCER TYPES**

- All Cancers



## Food & Friends

See District of Columbia listing.

## The Giving Garden Foundation

P.O. Box 1421  
Hayes, VA 23072

[www.thegivinggarden.org](http://www.thegivinggarden.org)  
[assistance@thegivinggarden.org](mailto:assistance@thegivinggarden.org)

The Giving Garden Foundation provides financial assistance for rents/mortgages, medical treatments and co-payments, prescriptions, utilities and groceries for cancer patients residing in Gloucester and Mathews counties. In addition to financial support, the foundation is continuously building an online database of other local, state and national resources for patients and their caregivers.

### FINANCIAL AND PRACTICAL HELP

- Co-Payments
- Financial Assistance
- Food
- Housing
- Medical Expenses
- Medication
- Utilities

### CANCER TYPES

- All Cancers

## Lee's Friends

7400 Hampton Blvd.  
Room 201  
Norfolk, VA 23505

757-440-7501

[www.leesfriends.org](http://www.leesfriends.org)

Lee's Friends is a support program for cancer patients and their families that offers one-on-one emotional support, transportation to and from treatment and emergency financial assistance. These services are available to any cancer patient and any family member of a cancer patient who lives in the South Hampton Roads area of Virginia.

### FINANCIAL AND PRACTICAL HELP

- Financial Assistance
- Transportation

### SPECIAL POPULATIONS

- Children and Adolescents
- Young Adults

### CANCER TYPES

- All Cancers

## | WASHINGTON |

### Cancer Lifeline

6522 Fremont Ave. N  
Seattle, WA 98103

800-255-5505 (toll free)  
206-297-2500

[www.cancerlifeline.org](http://www.cancerlifeline.org)

Cancer Lifeline seeks to optimize the quality of life for all people living with cancer. They provide in-person programs in Washington state and Lifeline and Lifeline Online access nationally and internationally. They provide financial assistance to low-income patients with breast and other types of cancer.

### FINANCIAL AND PRACTICAL HELP

- Camps and Retreats
- Financial Assistance
- Food
- Housing
- Utilities

### INFO/EDUCATION

- Patient Education
- Referrals

### CANCER TYPE

- All Cancers

## | WEST VIRGINIA |

### James “Tiger” Morton Catastrophic Illness Commission

The State Capitol Complex, Building 6  
8th Floor, Suite 850, Room 8-D  
Charleston, WV 25305

304-558-9027

[www.wvdhhr.org/cic](http://www.wvdhhr.org/cic)

The James “Tiger” Morton Catastrophic Illness Commission offers financial assistance to cancer patients in West Virginia for proven and approved medical procedures, transportation to medical facilities and medication that prevents rejection and/or recurrence of a life-threatening illness.

#### FINANCIAL AND PRACTICAL HELP

- Financial Assistance
- Housing
- Insurance Premiums
- Lodging
- Medical Expenses
- Transportation

#### INFO/EDUCATION

- Insurance
- Patient Education
- Referrals

#### CANCER TYPES

- All Cancers

## | WISCONSIN |

### Angel on My Shoulder

P.O. Box 747  
St. Germain, WI 54558

800-860-3431 (toll free)

[angelonmyshoulder.org](http://angelonmyshoulder.org)  
[info@angelonmyshoulder.org](mailto:info@angelonmyshoulder.org)

Angel on My Shoulder seeks to further the well-being of those affected by cancer through empowerment, enhancement of their quality of life and the creation of hope for the future by way of offering camps and retreats throughout the year.

#### FINANCIAL AND PRACTICAL HELP

- Camps and Retreats

#### CANCER TYPE

- All Cancers

## | WYOMING |

**Wyoming CARES**

P.O. Box 2575  
Casper, WY 82602

307-237-7035

[www.wyomingcares.org](http://www.wyomingcares.org)  
[wyomingcares@gmail.com](mailto:wyomingcares@gmail.com)

Wyoming CARES helps Wyoming infants, children, youth, adults and senior citizens with medical and non-medical needs. Those eligible must have established residency in Wyoming for a minimum of six months.

**FINANCIAL AND PRACTICAL HELP**

- Financial Assistance

**INFO/EDUCATION**

- Patient Education

**CANCER TYPE**

- All Cancers

**INDEX OF NATIONAL ORGANIZATIONS BY CANCER TYPE****All Cancers**

211.....	<b>11</b>
The Actors Fund.....	<b>18</b>
Air Charity Network.....	<b>19</b>
American Cancer Society (ACS).....	<b>21</b>
Benefits.gov.....	<b>8</b>
Camp Kesem.....	<b>25</b>
Camp Mak-A-Dream.....	<b>26</b>
Cancer and Careers.....	<b>28</b>
Cancer for College.....	<b>29</b>
CancerCare®.....	<b>30</b>
Catholic Charities USA.....	<b>32</b>
Centers for Medicaid Advocacy, Inc.....	<b>8</b>
Centers for Medicare & Medicaid Services.....	<b>8</b>
Chai Lifeline.....	<b>33</b>
Children's Organ Transplant Association (COTA).....	<b>36</b>
Dental Lifeline Network.....	<b>38</b>
The Dougy Center.....	<b>39</b>
Eldercare Locator.....	<b>11</b>
Expect Miracles Foundation.....	<b>40</b>
Family Reach.....	<b>41</b>
First Descents.....	<b>42</b>
Imerman Angels.....	<b>46</b>
Joe's House.....	<b>47</b>
LawHelp.org.....	<b>11</b>
LIVESTRONG Fertility.....	<b>50</b>
Locks of Love.....	<b>51</b>
Low Income Home Energy Assistance Program (LIHEAP).....	<b>6</b>
Meals on Wheels America.....	<b>54</b>
Medicare Rights Center (MRC).....	<b>8</b>
Medicine Assistance Tool (MAT).....	<b>9</b>
Mercy Medical Angels.....	<b>55</b>

Miracle Flights.....	58
The National Children’s Cancer Society (NCCS).....	61
National Foundation for Transplants.....	62
National LGBT Cancer Network.....	63
National Volunteer Transportation Center.....	65
NeedyMeds.....	9
Network of Jewish Human Service Agencies.....	66
New Eyes for the Needy.....	67
The Oncofertility Consortium.....	68
Osto Group.....	69
Patient Advocate Foundation (PAF).....	72
Patient Airlift Services (PALS).....	74
Pinky Swear Foundation.....	78
Ronald McDonald House Charities.....	79
Rx Outreach.....	9
Sibling Support Project.....	82
Starkey Hearing Foundation.....	84
Stupid Cancer.....	85
Sunshine Kids.....	86
Survivorship A to Z.....	88
Ulman Foundation.....	90
U.S. Social Security Administration.....	8

### Brain Cancer

Children’s Brain Tumor Foundation.....	34
Pediatric Brain Tumor Foundation.....	76
Smiles for Sophie Forever.....	83

### Breast Cancer

Medicare.....	53
National Breast and Cervical Cancer Early Detection Program.....	60
The Pink Fund.....	77
SHARE.....	81
Tigerlily Foundation.....	89

### Cervical Cancer

National Breast and Cervical Cancer Early Detection Program.....	60
---	----

### Childhood Cancers

Alex’s Lemonade Stand Foundation.....	20
Andrew McDonough B+ Foundation.....	22
Camp Quality USA.....	27
Children’s Brain Tumor Foundation.....	34
Children’s Leukemia Research Association.....	35
Children’s Organ Transplant Association (COTA).....	36
The National Children’s Cancer Society (NCCS).....	61
Pediatric Brain Tumor Foundation.....	76
Smiles for Sophie Forever.....	83
Sunshine Kids.....	86
Wigs for Kids.....	91

### Colorectal Cancer

Colorectal Cancer Alliance.....	37
Meredith’s Miracles Colon Cancer Foundation.....	56

### Head and Neck Cancer

Support for People with Oral and Head and Neck Cancer (SPONHC).....	87
--	----

### Leukemia

Be the Match (National Marrow Donor Program).....	23
Blood & Marrow Transplant Information Network (BMTInfoNet).....	24
Children’s Leukemia Research Association.....	35
The Leukemia & Lymphoma Society (LLS).....	48

### Lung Cancer

GO2 Foundation for Lung Cancer.....	43
-------------------------------------	----

**Lymphoma**

Be the Match (National Marrow Donor Program).....	<b>23</b>
Blood & Marrow Transplant Information Network (BMTInfoNet).....	<b>24</b>
The Leukemia & Lymphoma Society (LLS).....	<b>48</b>
The Leukemia & Lymphoma Society Co-Pay Assistance Program.....	<b>49</b>
Lymphoma Research Foundation (LRF).....	<b>52</b>

**Mesothelioma**

Mesothelioma Applied Research Foundation.....	<b>57</b>
---	-----------

**Multiple Myeloma**

Be the Match (National Marrow Donor Program).....	<b>23</b>
Blood & Marrow Transplant Information Network (BMTInfoNet).....	<b>24</b>
The Leukemia & Lymphoma Society (LLS).....	<b>48</b>

**Myelodysplastic Syndrome (MDS)**

Be the Match (National Marrow Donor Program).....	<b>23</b>
The Leukemia & Lymphoma Society (LLS).....	<b>48</b>

**Myeloproliferative Neoplasms**

The Leukemia & Lymphoma Society (LLS).....	<b>48</b>
--	-----------

**Ovarian Cancer**

Ovarcome.....	<b>70</b>
SHARE.....	<b>81</b>

**Prostate Cancer**

Malecare.....	<b>53</b>
---------------	-----------

**Rare Cancers**

National Organization of Rare Disorders (NORD).....	<b>64</b>
---	-----------

**Sarcoma**

Sarcoma Alliance.....	<b>80</b>
-----------------------	-----------

**Waldenstrom's Macroglobulinemia**

The Leukemia & Lymphoma Society (LLS).....	<b>48</b>
--	-----------

**INDEX OF NATIONAL ORGANIZATIONS BY SERVICE TYPE****Camps and Retreats**

Camp Kesem.....	<b>25</b>
Camp Mak-A-Dream.....	<b>26</b>
Camp Quality USA.....	<b>27</b>
Chai Lifeline.....	<b>33</b>
Children's Brain Tumor Foundation.....	<b>34</b>
First Descents.....	<b>42</b>
Pediatric Brain Tumor Foundation.....	<b>76</b>
Ronald McDonald House Charities.....	<b>79</b>
Stupid Cancer.....	<b>85</b>
Sunshine Kids.....	<b>86</b>

**Co-Payments**

Andrew McDonough B+ Foundation.....	<b>22</b>
CancerCare® Co-Payment Assistance Foundation (CCAF).....	<b>31</b>
Good Days.....	<b>44</b>
HealthWell Foundation.....	<b>45</b>
The Leukemia & Lymphoma Society Co-Pay Assistance Program.....	<b>49</b>
National Organization of Rare Disorders (NORD).....	<b>64</b>
Patient Access Network (PAN) Foundation.....	<b>71</b>
Patient Advocate Foundation Co-Pay Relief Program (PAF CPR).....	<b>73</b>
Patient Services, Inc. (PSI).....	<b>75</b>

**Dental**

Dental Lifeline Network.....	<b>38</b>
Ronald McDonald House Charities.....	<b>79</b>

**Eyeglasses**

New Eyes for the Needy.....	<b>67</b>
-----------------------------	-----------

**Fertility Preservation**

LIVESTRONG Fertility.....	<b>50</b>
The Oncofertility Consortium.....	<b>68</b>

**Financial Assistance**

Alex's Lemonade Stand Foundation.....	<b>20</b>
Andrew McDonough B+ Foundation.....	<b>22</b>
Be the Match (National Marrow Donor Program).....	<b>23</b>
Cancer for College.....	<b>29</b>

Children's Leukemia Research Association.....	<b>35</b>
Colorectal Cancer Alliance.....	<b>37</b>
Expect Miracles Foundation.....	<b>40</b>
Family Reach.....	<b>41</b>
Good Days.....	<b>44</b>
The Leukemia & Lymphoma Society (LLS).....	<b>48</b>
Lymphoma Research Foundation (LRF).....	<b>52</b>
Mesothelioma Applied Research Foundation.....	<b>57</b>
The National Children's Cancer Society (NCCS).....	<b>61</b>
National Foundation for Transplants.....	<b>62</b>
National Organization for Rare Disorders (NORD).....	<b>64</b>
Ovarcome.....	<b>70</b>
Patient Advocate Foundation (PAF).....	<b>72</b>
Patient Services, Inc. (PSI).....	<b>75</b>
Pediatric Brain Tumor Foundation.....	<b>76</b>
The Pink Fund.....	<b>77</b>
Pinky Swear Foundation.....	<b>78</b>
Sarcoma Alliance.....	<b>80</b>
Smiles for Sophie Forever.....	<b>83</b>
Ulman Foundation.....	<b>90</b>

### General Living Expenses

The Actors Fund.....	<b>18</b>
Low Income Home Energy Assistance Program (LIHEAP).....	<b>6</b>
Meredith's Miracles Colon Cancer Foundation.....	<b>56</b>

### Genetic Testing

Myriad Cares Financial Assistance Program.....	<b>59</b>
--	-----------

### Hearing Aids

Starkey Hearing Foundation.....	<b>84</b>
---------------------------------	-----------

### Housing

The Actors Fund.....	<b>18</b>
----------------------	-----------

### Insurance Premiums

The Actors Fund.....	<b>18</b>
Good Days.....	<b>44</b>
HealthWell Foundation.....	<b>45</b>
The Leukemia & Lymphoma Society (LLS).....	<b>48</b>
The Leukemia & Lymphoma Society Co-Pay Assistance Program.....	<b>49</b>
National Organization for Rare Disorders (NORD).....	<b>64</b>
Patient Access Network (PAN) Foundation.....	<b>71</b>
Patient Services, Inc. (PSI).....	<b>75</b>
The Pink Fund.....	<b>77</b>

### Lodging

The Actors Fund.....	<b>18</b>
Joe's House.....	<b>47</b>
Pediatric Brian Tumor Foundation.....	<b>76</b>
Ronald McDonald House Charities.....	<b>79</b>
Ulman Foundation.....	<b>90</b>

### Meal Delivery

Chai Lifeline.....	<b>33</b>
Meals on Wheels America.....	<b>54</b>

### Medical Equipment/Supplies

The Actors Fund.....	<b>18</b>
CancerCare®.....	<b>30</b>
Osto Group.....	<b>69</b>

### Medical Expenses

The Actors Fund.....	<b>18</b>
Children's Leukemia Research Association.....	<b>35</b>
The Leukemia & Lymphoma Society (LLS).....	<b>48</b>
Lymphoma Research Foundation (LRF).....	<b>52</b>
National Breast and Cervical Cancer Early Detection Program.....	<b>60</b>
National Organization for Rare Disorders (NORD).....	<b>64</b>
Patient Advocate Foundation (PAF).....	<b>72</b>
Patient Services, Inc. (PSI).....	<b>75</b>
Sarcoma Alliance.....	<b>80</b>

### Medication

The Actors Fund.....	<b>18</b>
CancerCare®.....	<b>30</b>
CancerCare® Co-Payment Assistance Foundation (CCAF).....	<b>31</b>
Children's Leukemia Research Association.....	<b>35</b>
The Leukemia & Lymphoma Society Co-Pay Assistance Program.....	<b>49</b>
Medicine Assistance Tool (MAT).....	<b>9</b>
Meredith's Miracles Colon Cancer Foundation.....	<b>56</b>
NeedyMeds.....	<b>9</b>
Rx Outreach.....	<b>9</b>

### Prostheses

The Actors Fund.....	<b>18</b>
CancerCare®.....	<b>30</b>
Locks of Love.....	<b>51</b>

Meredith's Miracles Colon Cancer Foundation.....	<b>56</b>
Wigs for Kids.....	<b>91</b>
<b>Scholarships</b>	
Cancer and Careers.....	<b>28</b>
Cancer for College.....	<b>29</b>
Children's Brain Tumor Foundation.....	<b>34</b>
The National Children's Cancer Society (NCCS).....	<b>61</b>
Patient Advocate Foundation (PAF).....	<b>72</b>
Pediatric Brain Tumor Foundation.....	<b>76</b>
Ulman Foundation.....	<b>90</b>
<b>Screening</b>	
National Breast and Cervical Cancer Early Detection Program.....	<b>60</b>
<b>Transportation</b>	
The Actors Fund.....	<b>18</b>
Air Charity Network.....	<b>19</b>
CancerCare®.....	<b>30</b>
Chai Lifeline.....	<b>33</b>
HealthWell Foundation.....	<b>45</b>
Mercy Medical Angels.....	<b>55</b>
Miracle Flights.....	<b>58</b>
National Volunteer Transportation Center.....	<b>65</b>
Patient Airlift Services (PALS).....	<b>74</b>
Ronald McDonald House Charities.....	<b>79</b>
<b>Utilities</b>	
Low Income Home Energy Assistance Program (LIHEAP).....	<b>6</b>
<b>Wigs</b>	
The Actors Fund.....	<b>18</b>
CancerCare®.....	<b>30</b>
Locks of Love.....	<b>51</b>
Meredith's Miracles Colon Cancer Foundation.....	<b>56</b>
Tigerlily Foundation.....	<b>89</b>
Wigs for Kids.....	<b>91</b>
<b>Wish Fulfillment</b>	
Tigerlily Foundation.....	<b>89</b>

## INDEX OF NATIONAL ORGANIZATIONS BY INFO/EDUCATION

### Debt Management

The Actors Fund.....	<b>18</b>
Benefits.gov.....	<b>8</b>
Cancer for College.....	<b>29</b>
Patient Advocate Foundation (PAF).....	<b>72</b>
Patient Advocate Foundation Co-Pay Relief Program (PAF CPR).....	<b>73</b>
Survivorship A to Z.....	<b>88</b>

### Entitlements/Benefits

The Actors Fund.....	<b>18</b>
Benefits.gov.....	<b>8</b>
CancerCare®.....	<b>30</b>
Center for Medicare Advocacy, Inc.....	<b>8</b>
Centers for Medicare & Medicaid Services.....	<b>8</b>
Children's Brain Tumor Foundation.....	<b>34</b>
Medicare Rights Center (MRC).....	<b>8</b>
Patient Advocate Foundation (PAF).....	<b>72</b>
Patient Services, Inc. (PSI).....	<b>75</b>
Survivorship A to Z.....	<b>88</b>
U.S. Social Security Administration.....	<b>8</b>

### Fundraising

Alex's Lemonade Stand Foundation.....	<b>20</b>
Be the Match (National Marrow Donor Program).....	<b>23</b>
Cancer for College.....	<b>29</b>
Children's Brain Tumor Foundation.....	<b>34</b>
Children's Organ Transplant Association (COTA).....	<b>36</b>
The Leukemia & Lymphoma Society (LLS).....	<b>48</b>
National Foundation for Transplants.....	<b>62</b>
Survivorship A to Z.....	<b>88</b>

### Home Care

The Actors Fund.....	<b>18</b>
Benefits.gov.....	<b>8</b>
CancerCare®.....	<b>30</b>
Patient Advocate Foundation (PAF).....	<b>72</b>
Survivorship A to Z.....	<b>88</b>
Ulman Foundation.....	<b>90</b>



**Hospice**

The Actors Fund..... **18**  
 CancerCare®..... **30**  
 Patient Advocate Foundation (PAF)..... **72**  
 Survivorship A to Z..... **88**  
 Ulman Foundation..... **90**

**Insurance**

The Actors Fund..... **18**  
 American Cancer Society (ACS)..... **21**  
 Be the Match (National Marrow Donor Program)..... **23**  
 Benefits.gov..... **8**  
 Cancer and Careers..... **28**  
 CancerCare®..... **30**  
 Center for Medicare Advocacy, Inc..... **8**  
 Centers for Medicare & Medicaid Services..... **8**  
 Children’s Brain Tumor Foundation..... **34**  
 Children’s Organ Transplant Association (COTA)..... **36**  
 LIVESTRONG Fertility..... **50**  
 Medicare Rights Center (MRC)..... **8**  
 Patient Advocate Foundation (PAF)..... **72**  
 Patient Services, Inc. (PSI)..... **75**  
 Sarcoma Alliance..... **80**  
 Survivorship A to Z..... **88**  
 U.S. Social Security Administration..... **8**

**Legal**

Cancer and Careers..... **28**  
 Center for Medicare Advocacy, Inc..... **8**  
 Expect Miracles Foundation..... **40**  
 LawHelp.org..... **11**  
 LIVESTRONG Fertility..... **50**  
 Patient Advocate Foundation (PAF)..... **72**  
 Patient Services, Inc. (PSI)..... **75**  
 Survivorship A to Z..... **88**

**INDEX OF NATIONAL ORGANIZATIONS  
 BY SPECIAL POPULATIONS**

**Caregivers**

Camp Mak-A-Dream..... **26**  
 CancerCare®..... **30**  
 The Dougy Center..... **39**  
 Expect Miracles Foundation..... **40**  
 Imerman Angels..... **46**  
 Joe’s House..... **47**

**Children and Adolescents**

Alex’s Lemonade Stand Foundation..... **20**  
 American Cancer Society (ACS)..... **21**  
 Andrew McDonough B+ Foundation..... **22**  
 Be the Match (National Marrow Donor Program)..... **23**  
 Camp Kesem..... **25**  
 Camp Mak-A-Dream..... **26**  
 Camp Quality..... **27**  
 CancerCare®..... **30**  
 Chai Lifeline..... **33**  
 Children’s Brain Tumor Foundation..... **34**  
 Children’s Leukemia Research Association..... **35**  
 Children’s Organ Transplant Association (COTA)..... **36**  
 The Dougy Center..... **39**  
 Family Reach..... **41**  
 HealthWell Foundation..... **45**  
 The Leukemia & Lymphoma Society (LLS)..... **48**  
 The Leukemia & Lymphoma Society  
 Co-Pay Assistance Program..... **49**  
 Locks of Love..... **51**  
 Lymphoma Research Foundation (LRF)..... **52**  
 Miracle Flights..... **58**  
 The National Children’s Cancer Society (NCCS)..... **61**  
 Pediatric Brain Tumor Foundation..... **76**  
 Pinky Swear Foundation..... **78**  
 Ronald McDonald House Charities..... **79**  
 Smiles for Sophie Forever..... **83**  
 Sunshine Kids..... **86**  
 Wigs for Kids..... **91**

## Young Adults

American Cancer Society (ACS)	21
Andrew McDonough B+ Foundation	22
Be the Match (National Marrow Donor Program)	23
Camp Kesem	25
Camp Mak-A-Dream	26
CancerCare®	30
Children's Brain Tumor Foundation	34
Children's Leukemia Research Association	35
Children's Organ Transplant Association (COTA)	36
The Dougy Center	39
Expect Miracles Foundation	40
Family Reach	41
First Descents	42
The Leukemia & Lymphoma Society (LLS)	48
The Leukemia & Lymphoma Society Co-Pay Assistance Program	49
LIVESTRONG Fertility	50
Lymphoma Research Foundation (LRF)	52
Meredith's Miracles Colon Cancer Foundation	56
Miracle Flights	58
The National Children's Cancer Society (NCCS)	61
The Oncofertility Consortium	68
Pediatric Brain Tumor Foundation	76
Ronald McDonald House Charities	79
Stupid Cancer	85
Tigerlily Foundation	89
Ulman Foundation	90
Wigs for Kids	91

## Siblings

Alex's Lemonade Stand Foundation	20
American Cancer Society (ACS)	21
Camp Mak-A-Dream	26
Camp Quality USA	27
The Dougy Center	39
Patient Airlift Services (PALS)	74
Sibling Support Project	82

## LGBTQ+

CancerCare®	30
Malecare	53
National LGBT Cancer Network	63

## Bereaved

CancerCare®	30
Chai Lifeline	33
The Dougy Center	39
Imerman Angels	46









**CANCER***care*<sup>®</sup>

**CancerCare<sup>®</sup>**  
**National Office**  
**275 Seventh Avenue**  
**New York, NY 10001**  
**800-813-HOPE (4673)**

**[www.cancercare.org](http://www.cancercare.org)**  
**[info@cancercare.org](mailto:info@cancercare.org)**

**© 2021 CancerCare<sup>®</sup>**