



**CANCERcare®**  
Help and Hope

## FREE PROFESSIONAL SUPPORT SERVICES

CancerCare helps individuals, families, caregivers and the bereaved cope with the emotional and practical challenges of cancer. Our services include case management, counseling, support groups, educational workshops, publications and financial assistance. All of our services are provided by master's-prepared oncology social workers and are offered completely free of charge. To learn more, visit [www.cancercares.org](http://www.cancercares.org).

## CONNECT WITH US



**FACEBOOK**  
[www.facebook.com/CancerCare](http://www.facebook.com/CancerCare)



**BLOG**  
[www.cancercares.org/blog](http://www.cancercares.org/blog)



**YOUTUBE**  
[www.youtube.com/cancercaresinc](http://www.youtube.com/cancercaresinc)

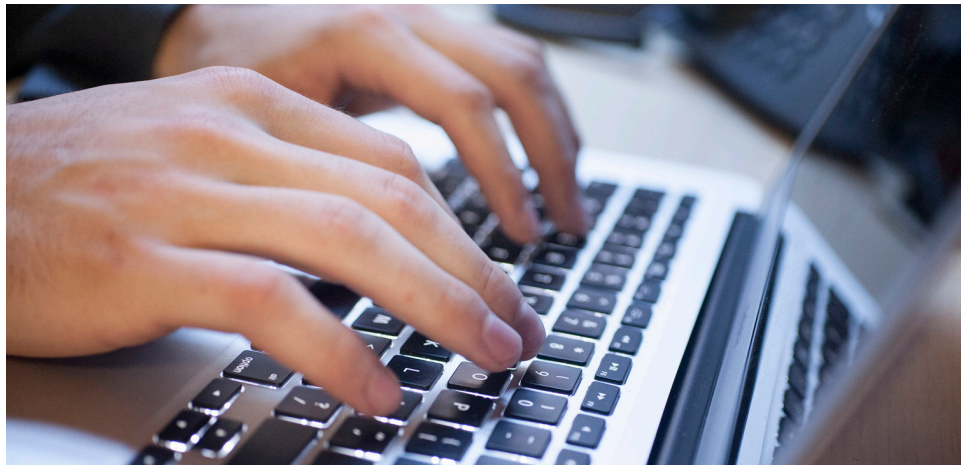


**TWITTER**  
@CancerCare



**INSTAGRAM**  
@CancerCareUS

**CancerCare® National Office**  
275 Seventh Avenue  
New York, NY 10001  
800-813-HOPE (4673)



## Prostate Cancer Online Support Group

**CancerCare is offering a 15-week online support group for people diagnosed with prostate cancer who are currently receiving treatment. This group is co-sponsored by the National Alliance of State Prostate Cancer Coalitions (NASPCC). In this group led by an oncology social worker, patients give support to each other and share resources and information.**

### OUR GROUP:

- Reduces feelings of loneliness, anxiety and distress
- Helps you learn new ways of coping
- Increases feelings of hope and empowerment
- Provides you with practical information about treatment and resources
- Helps you communicate better with your medical team and loved ones

### TO JOIN THIS SUPPORT GROUP, PLEASE VISIT

**[cancercares.org/support\\_groups/126-prostate\\_cancer\\_patient\\_support\\_group](http://cancercares.org/support_groups/126-prostate_cancer_patient_support_group)** to complete our online registration process. Internet access is required. After joining this password-protected group, you can read and post messages 24 hours a day, 7 days a week.

At this time, CancerCare's online support groups are only available to people residing within the United States (including Puerto Rico and U.S. territories).

