



CANCER*care*®

ANNUAL REPORT

Fiscal Year 2023



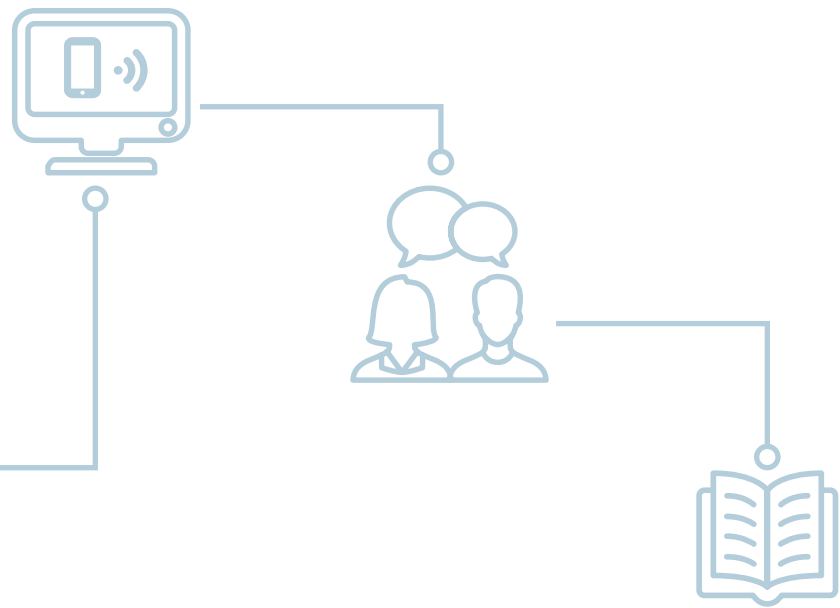


TABLE OF CONTENTS

Letter From Our Leadership	2
Our Mission	3
How We Help	4
Our Impact: Who We Help	8
Advocacy and Public Policy	16
Showcasing Our Expertise	18
Working Together to Spread Help and Hope	20
Our Fundraisers and Events	22
Corporate Circle of Hope Listing	25
Thank You to Our Supporters	26
Our Leadership	33
Financial Summary	36



DEAR FRIENDS OF CANCERCARE,



Christine Verini, RPh
Chief Executive Officer

We are so thankful and delighted to have experienced another year of CancerCare's amazing impact on people affected by cancer throughout the United States. We would also like to acknowledge the support of our donors, volunteers, friends and advocates. Each of you have allowed CancerCare to provide emotional, practical and financial support to millions of individuals for the past 79 years.

2023 marked three years since the beginning of the COVID-19 pandemic, which had an especially profound effect on the cancer community. CancerCare continues to serve our clients as their needs evolve, demonstrated by the efforts of our passionate and empathetic team members.

In this annual report, we are proud to highlight the free programs, services and resources that we offered in fiscal year 2023, including our Pet Assistance and Wellness Program, CancerCare for Kids® and our Connect Education Workshops, which now offer closed captioning services in their recorded webcasts.

All of this is possible as a result of your generous support. On behalf of the Board of Trustees, our entire staff and the tens of thousands of clients this year who have found help and hope through CancerCare, we extend our utmost gratitude.

Sincerely,

Christine Verini, RPh
Chief Executive Officer, CancerCare

Michael Parisi
President, CancerCare Board of Trustees

Patricia J. Goldsmith
Immediate Past Chief
Executive Officer, CancerCare



Michael Parisi
President, Board of Trustees

OUR MISSION,

Founded in 1944, CancerCare is the leading national organization providing free, professional support services and information to help people manage the emotional, practical and financial challenges of cancer. Our comprehensive services include resource navigation, counseling and support groups over the phone, online and in-person, educational workshops, publications and financial and co-payment assistance. All CancerCare services are provided by master's-prepared oncology social workers and world-leading cancer experts.



FINANCIAL ASSISTANCE AND CO-PAYMENT ASSISTANCE

The financial challenges of a cancer diagnosis and treatment can be overwhelming. CancerCare's financial assistance program helps with cancer-related costs, such as transportation, child care and co-payments. CancerCare provided **\$81 million** in financial and co-payment assistance to **28,126 people**.

RESOURCE NAVIGATION

CancerCare provides free resource navigation in English and Spanish by phone to anyone in the United States affected by cancer, including those living with cancer, caregivers and post-treatment survivors. Our oncology social workers and professional resource navigators help to offer practical information about cancer and connect people with resources in their community. **Our staff provided 1,483 resource navigation sessions.**

SUPPORT GROUPS

People affected by cancer find a safe space to connect with others who relate to their experiences in CancerCare's free support groups hosted live via a secure updated video platform, in-person, over-the-phone or online. Run by our master's-prepared oncology social workers, these groups allow participants to discuss the unique challenges of being impacted by cancer while exchanging support, getting information and receiving guidance. **This year, we hosted 45 support groups for people living with cancer, post-treatment survivors, caregivers and the bereaved.**

ONLINE

Our free online support groups take place on a password-protected message board format for 15 weeks at a time and are led by master's-prepared oncology social workers. Members can participate by posting in the groups 24 hours a day, 7 days a week. Anyone in the United States, including Puerto Rico and other U.S. Territories, can join these groups.

LIVE

Our free live support groups give people affected by cancer residing in New York, New Jersey and Connecticut the opportunity to connect with others who share similar experiences and concerns. Moderated by master's-prepared oncology social workers, live support groups are offered via video-conferencing, over the phone or in person.

HOW WE HELP

INDIVIDUAL COUNSELING/HELPLINES

CancerCare's oncology social workers offer one-on-one psychosocial support in English and Spanish to people living with cancer, post-treatment survivors, caregivers and the bereaved in New York and New Jersey. Through individual counseling, our clients are able to receive emotional and practical support that applies to their unique cancer experience.

CANCERCARE HOPELINE

800-813-HOPE (4673)

Our toll-free Hopeline, run by CancerCare's oncology social workers, provides support and resources to anyone affected by cancer in the United States. **This year, our social workers answered 46,436 calls through our Hopeline.**

LUNGEVITY LUNG CANCER HELPLINE

844-360-LUNG (5864)

Through a partnership between CancerCare and LUNgevity, the Lung Cancer Helpline provides free, personalized emotional, financial and practical support to patients and caregivers coping with a lung cancer diagnosis.

TRIPLE NEGATIVE BREAST CANCER HELPLINE

877-880-TNBC (8622)

Our Triple Negative Breast Cancer Helpline, in partnership with the Triple Negative Breast Cancer Foundation, provides free, professional support services to patients and caregivers coping with a triple negative breast cancer diagnosis.

DEBBIE'S DREAM STOMACH CANCER HELPLINE

877-646-5864

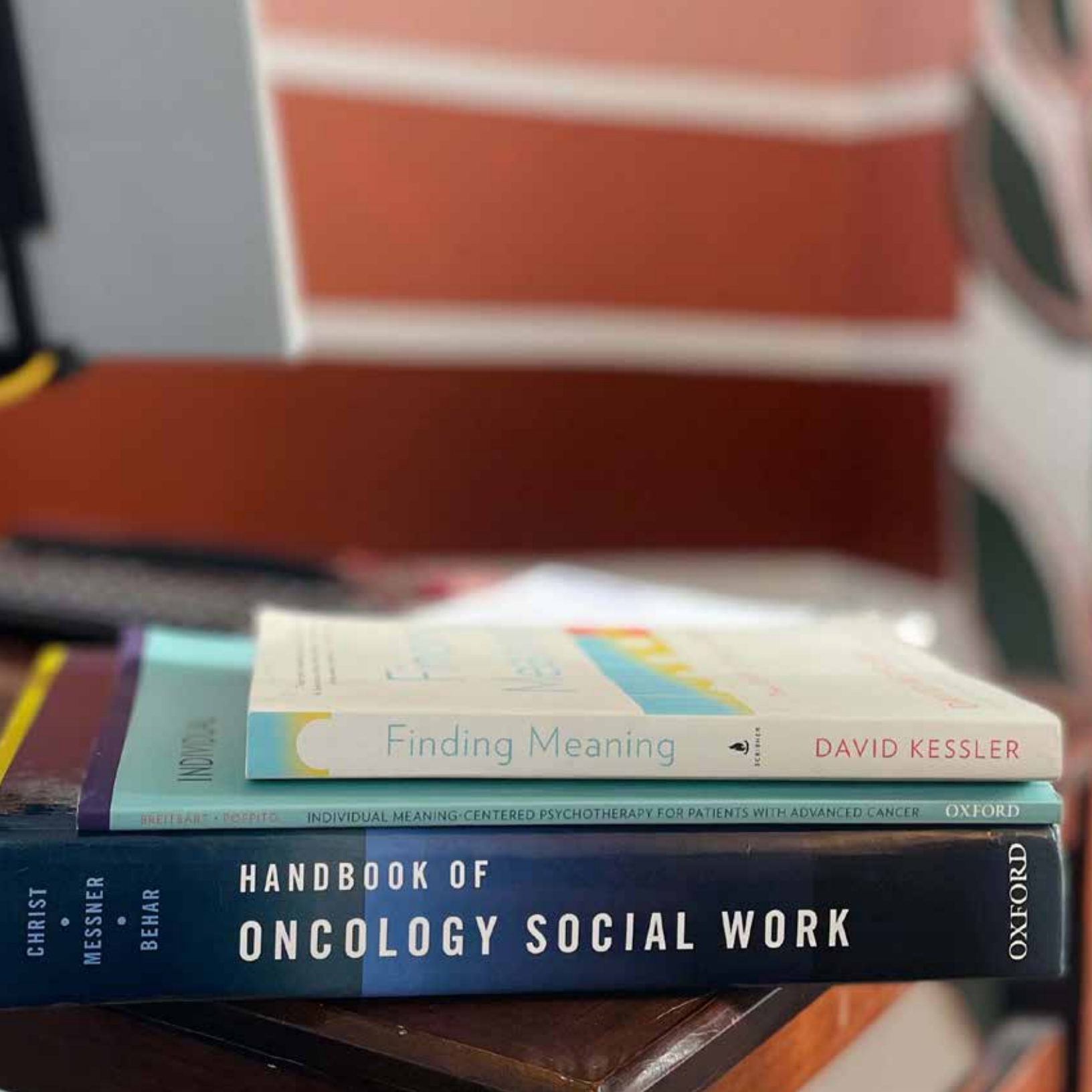
Through CancerCare's continued partnership with Debbie's Dream Foundation: Curing Stomach Cancer, the Debbie's Dream Stomach Cancer Helpline provides dedicated emotional support to people affected by stomach cancer, including patients, their loved ones, caregivers and those who have lost a loved one to stomach cancer. Master's-prepared oncology social workers with specific expertise in the issues facing the stomach cancer community run this helpline.

BLADDER CANCER HELPLINE

833-ASK-4BCA or 833-275-4222

This year, CancerCare partnered with the Bladder Cancer Advocacy Network (BCAN) to start the first-ever helpline for bladder cancer patients, their loved ones, caregivers and those who have lost a loved one to bladder cancer. This helpline is staffed by professional oncology social workers with specific expertise on the emotional and practical needs of the bladder cancer community.





HOW WE HELP | EDUCATIONAL RESOURCES

CONNECT EDUCATION WORKSHOPS

CancerCare's Connect® Education Workshops offer a free and accessible way to learn about cancer-related issues from leaders in oncology. These one-hour workshops offer the latest information on topics relevant to the cancer community, such as treatment options, clinical trials and much more. Attendees may listen online or by phone. Recorded webcasts with closed captioning services are available after each workshop. **We offered 68 workshops this year, led by 133 experts and supported by 76 partner organizations, drawing 46,783 participants.**



PUBLICATIONS

CancerCare's library of comprehensive and accessible fact sheets and booklets provide expert insight into a wide variety of cancer-related topics. Publications can be read online, with select titles available in print. **This year, we distributed 966,203 print and digital publications to people affected by cancer and to health care professionals.**



WEBSITE

CancerCare's free resources and programs are easily accessible through our website. **This year, we welcomed 2 million visits.**

ONLINE HELPING HAND

CancerCare's Online Helping Hand provides an extensive database of resources and services for people affected by cancer. Users can find hundreds of national and regional organizations that cover a wide variety of cancer-related issues, along with up-to-date descriptions and contact information. **This year, users completed 60,596 searches through our Online Helping Hand.**



CLIENT SPOTLIGHT | JOSH'S STORY

Josh, a 29-year-old water scientist from Manhattan, has always found a way to be outside, whether it's camping, hiking or biking. He also fills his time with board games and cherishes his tight-knit circle of friends.

At the age of 19, while he was in college, Josh's life took a drastic turn when he was diagnosed with Hodgkin lymphoma. The uncertainty and looming questions about what lay ahead weighed heavily on him. He tried distracting himself from his diagnosis and avoided talking about it. But he knew this approach wasn't helpful for him in coping. When he was diagnosed a second time, two years ago, with Hodgkin lymphoma, he sought another strategy to help him navigate his illness.



"It's interesting because I had two different experiences with it," Josh said. "When I was 19, it was a lot of uncertainty – what was going to happen, what it was going to look like after and what it all was going to mean. I struggled a lot with that."

He discovered that connecting with others facing similar challenges was instrumental in his healing. After his second diagnosis, CancerCare helped provide the support network he needed and realize that he wasn't alone. "Right away when I got sick the second time, the first thing I wanted to do was reach out to a support group and speak to other people who were going through something similar. Coming to CancerCare, going through the experience and talking to others going through it was really cathartic for me. It was just nice to know that you weren't the only one dealing with it, especially the only one at a certain age because cancer, especially as a young adult, is really isolating."

Josh's journey with cancer, as challenging as it was, ultimately brought him closer to his loved ones and provided him with newfound clarity about the life he wanted to live.

"Talking to others, especially people who are going through what you're going through, is unbelievably helpful. But also using your support network and recognizing that a lot of your friends want to be there for you. It can sometimes be hard to ask for help, but I think most of the time the people in your life who care about you want to give that help."

OUR IMPACT | CANCERCARE FOR KIDS®

BACK-TO-SCHOOL PROGRAM

Since 2016, the CancerCare for Kids' Back-to-School Program has provided new backpacks full of school supplies to children and teens in the tri-state area. For many parents and caregivers, the added expenses of back-to-school shopping can easily strain household budgets. By providing free back-to-school supplies, this program helps to alleviate some of the stress in preparing for the academic year. This year, **166 free back-to-school packages were sent out to 82 families, which included backpacks with notebooks, folders, pencils and art supplies.**



166
free back-to-school
packages sent to
children and teens in
the tri-state area



WINTER PROGRAMS (WINTER WARMTH, TOY DRIVE)

CancerCare's Winter Warmth Program provides essential winter supplies to children and teenagers in the tri-state area who have been affected by cancer. This year, **the program sent out 130 packages containing gloves, blankets, scarves and hats to children and teens affected by cancer.** Through CancerCare for Kids' Holiday Gift Card Program, **more than 145 children and teenagers received gift cards for the holidays.** For families facing financial challenges, these winter programs help to ease some of the burden of affording gifts and winter clothes during the holiday season.



TIME TO SCREEN

CancerCare and Community Oncology Alliance partnered with two-time Grammy award winner and “Godmother of Soul” Patti LaBelle to encourage adults not to delay potentially lifesaving cancer screenings. After millions of people delayed care due to the COVID-19 pandemic, LaBelle and the two non-profit organizations launched the Time to Screen campaign to provide assistance and educational resources to consumers, **including a toll-free hotline at 1-855-53-SCREEN (1-855-537-2733) and website (www.TimeToScreen.org)** featuring information on the importance of screening and support for finding local screening options.



TIME TO SCREEN
Detecting Cancer Early
May Save Your Life

855-53-SCREEN
TimeToScreen.org

toll-free hotline and website
providing information
on cancer screenings



HEALING HEARTS

CancerCare’s Healing Hearts Family Bereavement Camp is an annual highlight for clients, their families and staff. From July 14-16, 2023, CancerCare hosted its 14th Annual Healing Hearts Family Bereavement Camp, a free retreat for families and children coping with the loss of a loved one to cancer. For this year’s camp, which was ocean-themed, families spent the weekend at Memorytown USA in Mount Pocono, Pennsylvania, participating in activities, including creating sea-themed memory jars and collages to share memories of their loved ones, songwriting, dancing and fishing.



MY CANCER CIRCLE™

My Cancer Circle is a simple, customizable online tool that helps organize a community of people who want to lend a hand to a person living with cancer or their caregivers. Users can invite friends and neighbors to a private community, request help with specific tasks, send reminders and share important updates. This platform offers an easy way for caregivers and people living with cancer to manage their day-to-day care and stay in touch with their loved ones. **My Cancer Circle has helped thousands of users since 2013, with 27,322 users participating in 2,155 active caregiver communities** this year alone.



WIG/PROSTHESIS CLINIC

CancerCare’s Wig Clinic and Breast Prosthesis Clinic aim to empower women diagnosed with cancer to look and feel their best during treatment and beyond. CancerCare’s Wig Clinic is an opportunity for women who are receiving chemotherapy to receive a free wig with assistance from a professional wig fitter. CancerCare’s Breast Prosthesis Clinic gives women who have had a mastectomy due to breast cancer treatment the opportunity to receive free mastectomy supplies and try on mastectomy bras and breast prostheses with assistance from a trained fitter. Through our virtual appointments, **we distributed 585 wigs and prostheses to clients affected by cancer.**



CancerCare continues to support our community with a blend of educational and social workshops. Educational topics include fertility preservation, dating and relationships, post-treatment survivorship, nutrition, exercise and workplace-related issues. Oncology social workers also hosted virtual events to help clients connect with other young adults affected by cancer through yoga, Pilates, trivia and more.

REIKI

Since 2002, Reiki Master Linda Gnat-Mullin has offered free monthly Reiki workshops to the CancerCare community. **Meeting one Wednesday a month, from 12:30 – 2 p.m. ET, CancerCare's Reiki workshops are open to everyone.** Reiki is a gentle energy treatment that balances the body and leaves many participants feeling more connected. Each workshop (conducted over Zoom) offers Reiki, features a wellness topic and allows for attendees to meet and connect with each other.



LEGAL CLINIC

CancerCare and LegalHealth, a division of the New York Legal Assistance Group (NYLAG), continue to provide free legal clinics for New York City clients. This initiative, funded in part by AbbVie Pharmaceuticals, provides assistance for those living with cancer, caregivers and the bereaved who are facing cancer-related legal concerns.



YPC SCHOLARSHIPS

For the fourth award cycle, CancerCare's Young Professionals Committee (YPC) Scholarship Program awarded one-time \$2,500 scholarships to young adult students enrolled in a four-or six-year undergraduate accredited college in the U.S. or to high school seniors applying to college who have lost a parent or guardian to cancer. **Since its inception, the committee has awarded a total of \$43,000 in scholarships.** CancerCare is excited to continue growing the scholarship program and make a positive difference for young adults impacted by cancer.



CancerCare continues to offer free, virtual Coping Circle workshops for anyone affected by cancer. Facilitated by master's-prepared oncology social workers, these programs educate people living with cancer and their caregivers and offer guidance for ways to better cope with a cancer diagnosis. Workshops in fiscal year 2023 included:

COVID-19 and Cancer



These workshops provided an overview of the many changes that have impacted the cancer community over the last several years and covered topics such as telemedicine, communicating with your medical team, coping with pandemic-related stress and staying safe during treatment to decrease the risk of infections.

Stomach Cancer During the Holidays



Holidays are traditionally viewed as a time to celebrate. However, sometimes people with cancer and their loved ones feel "out of step" from the rest of the world during the holidays. In partnership with Debbie's Dream Foundation, CancerCare hosted a workshop to address coping with stomach cancer during the holidays.

Health Care Disparities



This workshop series helped people with cancer and their loved ones identify, navigate and address barriers to accessing care.

Ways to Wellness



These workshops are offered throughout the year to assist and support people living with cancer and their caregivers, while providing information and education.

Demystifying Clinical Trials



In partnership with HealthyWomen, this workshop provided educational information about clinical trials by addressing common myths and providing guidance on how to access them.

Adolescent & Young Adult (AYA) Cancer Chronicles



AYA workshops provide adolescent and young adult patients and caregivers with a safe platform to share their personal and unique perspectives.

CANCER OUT LOUD: THE CANCERCARE PODCAST

Cancer Out Loud: The CancerCare Podcast features conversations with people living with cancer, caregivers, post-treatment survivors, loved ones and the bereaved. Each episode sheds light on what it's like to be part of a support group, maintain a career during treatment, cope with grief and much more. In June 2023, Sarah Paul, LCSW, OSW-C, CancerCare's Director of Clinical Programs, received first place for her poster presentation from the Association of Oncology Social Work for her outstanding work on the podcast. **In 2023, eight full-length episodes were released.**

PET ASSISTANCE & WELLNESS (PAW) PROGRAM

A pet can be a significant source of support for a person diagnosed with cancer. However, caring for a pet can become increasingly challenging for those in active cancer treatment. CancerCare's PAW Program provides educational resources for cat and dog owners as well as financial assistance that helps them with the cost of pet food, veterinary bills, dog walking and more. **In 2023, CancerCare helped 1,336 people with cancer keep their pets at home.**



YOUNG ADULT PROGRAM

The Young Adult Program provides direct services to young adults affected by cancer, between the ages of 18-40. Through a supportive environment, this program strives to identify the stressors affecting this population and delivers supportive services in order to empower each individual in their experience through education, advocacy and psychosocial support services.

CAREGIVER PROGRAM

CancerCare provides free, professional support services for caregivers and loved ones, as well as caregiving information and additional resources, including support groups, Connect Education Workshops, podcasts and publications for individuals caring for loved ones impacted by cancer. The Caregiver Program provides space and fosters a community for caregivers to process their many feelings and thoughts while connecting with others in similar situations.

OLDER ADULT PROGRAM

CancerCare, in partnership with Caring About Seniors, continued its Pen Pal Program connecting older adults with volunteer letter-writers. This program reduces feelings of isolation by building connections across distance and across generations.



CAREGIVER DECISION-MAKING REPORT REVEALS GAPS IN SUPPORT FOR CAREGIVERS

CancerCare released “Cancer Caregivers: National Research Report on Shared Treatment Decision-Making,” detailing the findings of its nationwide Caregiver Decision-Making Survey. The survey and report provide a fuller understanding of caregivers’ considerations, needs and challenges in caring for their loved ones.

For example, many caregivers are faced with a gap of information while needing to make immediate medical decisions after a loved one is newly diagnosed. They often feel ill-prepared and dissatisfied with the educational materials that are available to them.

The report offers recommendations for clinicians, organizations, medical associations and others to more effectively support the needs of caregivers who participate in these treatment decisions. With these insights, existing resources can be strengthened and new programs created to foster an environment where informed decisions can be better made.



BIOMARKER TESTING HELPS CANCER TREATMENT AND IMPROVES HEALTH OUTCOMES: CANCERCARE SURVEY

Biomarker testing is a vital tool in the advancing world of precision cancer treatment, helping identify the most effective therapies for eligible cancer patients. When the right treatments are given at the right time, cancer outcomes and quality of life can be improved for many, yet there still remain significant barriers to receiving or paying for such tests.

In April 2023, CancerCare released a survey detailing the ways biomarker testing helps inform treatment decisions and affects overall care. For example, biomarker testing enabled two in ten cancer patients to avoid unnecessary chemotherapy and/or radiation and one in ten patients to become eligible for a clinical trial. This suggests significant opportunities missed without biomarker testing.

Despite the benefits of such testing, nearly 30% of those surveyed did not have biomarker testing covered by their insurance. Others had biomarker test coverage denied or had to find financial assistance to cover the costs. Prior authorization, a significant roadblock to timely treatment, was required by a quarter of respondents.

Fortunately, 11 states have mandated, or are about to mandate, that health care plans must cover biomarker testing for cancer patients and at least 18 more states have introduced similar legislation. Biomarker testing continues to be a health care equity issue, however, with gaps in testing prevalent in many communities. The costs and availability for everyone remain a serious concern.

The Employer Biomarker Testing Toolkit: Guidance for Biomarker Testing Support for Employees

Following its landmark Employer Toolkit on Best Practices for Prescription Drug Benefit Design, CancerCare released its Employer Toolkit on Biomarker Testing to help organizations make optimal decisions about covering cancer biomarker testing for their employees. Biomarker testing can ensure that employees with cancer get the right treatments at the right time, which can save money and provide better outcomes.

The Biomarker Toolkit is designed to help employers understand the role and benefits of cancer biomarker testing, so they can ask their consultants and insurance providers the right questions, avoid coverage decisions that could negatively impact covered employees and design coverage that best meets the needs of their employees.

The Toolkit offers resources for working with insurers and benefits consultants to include guideline-recommended coverage of biomarker testing in health insurance plans. It features important information to help avoid provisions that could negatively impact covered employees and to implement best practice recommendations.



SHOWCASING OUR EXPERTISE

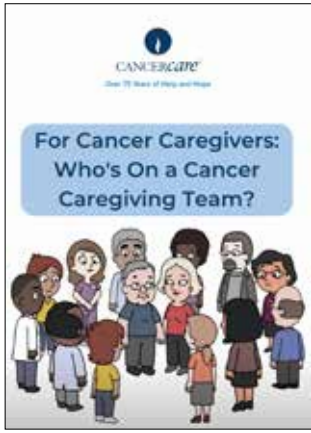
This year, our social workers showcased their expertise by contributing to publications and providing insightful perspectives to the following media outlets:



SHOWCASING OUR EXPERTISE | AMPLIFYING AWARENESS

ANIMATED VIDEOS

CancerCare launched a series of professional education video fact sheets, available in English and Spanish, as part of its “Get the Facts” campaign. These videos cover a range of topics important to patients and caregivers, including managing a loved one’s diagnosis, practicing cultural humility for the care team, understanding who is on a cancer caregiving team, CAR T-cell therapy for multiple myeloma and CAR T-cell therapy for cancers of the blood and lymph tissues.



AWARENESS CAMPAIGNS

Know AML, Know ALL

Since 2017, CancerCare has partnered to support the Know AML (acute myeloid leukemia) global initiative with a number of other prestigious organizations. In 2021, CancerCare joined the Know ALL (acute lymphoblastic leukemia) global education and awareness initiative that helps patients and caregivers better understand these complex diseases. Learn more about these campaigns at www.know-aml.com and www.know-alleukemia.com.



TNBC Live Event

Every March, as part of Triple Negative Breast Cancer Awareness month, CancerCare oncology social workers and TNBC thrivers participate in Instagram Live conversations to discuss coping with the diagnosis, raise awareness and answer any questions that come up during the discussions. These recordings are available to watch through CancerCare’s Instagram, so be sure to follow us at @CancerCareUS.

IMPROVED ACCESSIBILITY FOR CONNECT EDUCATION WORKSHOPS

CancerCare made a significant step towards improving inclusivity and accessibility by adding closed captioning for its recorded Connect® Education Workshops. Led by experts in oncology, these free, one-hour educational workshops provide up-to-date information offered over the phone and online. Once the workshops have passed, the recordings with closed captioning are added to the website and are free for anyone to download or stream.



WORKING TOGETHER TO SPREAD HELP AND HOPE

ALIVE WE'RE EMPOWERED (AWE)

A brand of fine jewelry founded by three-time cancer survivor Jill Johnson, Alive We're Empowered (AWE) donates a portion of gifts purchased on AWEinspired.com toward programs helping individuals impacted by cancer.



HINES

Hines is a proud sponsor of CancerCare and its programs to provide help and hope to people affected by cancer. Hines holds the Cupcakes for a Cause fundraiser annually to provide support for CancerCare's most pressing needs.



MAGNOLIA MEALS AT HOME

Magnolia Meals at Home supports those living with cancer with nutritious meals free of charge, letting them focus more energy on their health and treatment. **Sponsored by Eisai, the program helped 413 individuals** in areas of Massachusetts, New Hampshire, New Jersey, New York and North Carolina.



THE MARY KAY ASH FOUNDATION

The Mary Kay Ash Foundation has supported the Touching Hearts Program, a vital resource for women living with cancer throughout the United States, since 2000. For nearly 25 years the program has provided tangible resources to women as they face a cancer diagnosis, including psychosocial support and financial assistance.



NEW YORK COMMUNITY TRUST

The New York Community Trust enables CancerCare to help low-income residents and families in New York City with a \$745,000 grant to help with the financial burdens of cancer. The majority of this grant is made possible by the Orland S. and Frances S. Greene Fund, which specifically targets cancer patients in financial need.



Cancer Care Inc.,
I received the check for \$100.
Thank you so very much. I am
very appreciative for any help I
receive. Thankful to God for every
day I have.

may God bless you all.

Sincerely, Alice

I just wanted to
send a quick note
to express my
heartfelt gratitude
and say thank you
for your support and
assistance.

It was greatly
appreciated.

Sincerely,

Mary H

Thank you so much for the
incredible opportunity to participate
in the Healing Hearts camp. Molly +
I were blown away by the
caring + supportive environment
and truly enjoyed being able to
create bonds with people in
similar circumstances. The facilities
were wonderful, the activities were
thoughtful and well-planned, but
none of this could have been
accomplished without a dedicated
staff. Thank you from the bottom
of our hearts!

Love,
Mike + Molly

Dear Cancer Care Team
Thank you so much for
your very generous gift, this
has been one of the most
challenging times in my life &
your support has lessened
some of the stresses. It is
nice to know that
there are people out
there who care.

God bless you.
he3

OUR FUNDRAISERS AND EVENTS

THE LONGEST DAY OF GOLF

Golf enthusiasts come together each year to complete as many holes as possible in one day to support those impacted by cancer, with some completing 100 holes or more.

DO SOMETHING FOR CANCERCARE

The “Do Something for CancerCare” event lets people support CancerCare in ways limited only by their own imagination. Musical performances, household chores, exercise routines – virtually anything can be used to raise funds for CancerCare’s free support services.

CANCERCARE GOLF CLASSIC

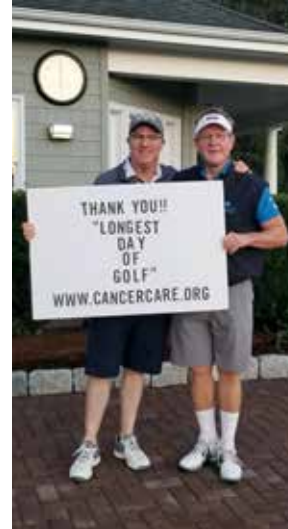
CancerCare supporters took to the links at GlenArbor Golf Club in Bedford Hills, NY, to show off their skills during this annual golfing event for a cause.

CANCERCARE NATIONAL GALA

In April, CancerCare held its annual Spring Gala at the Ziegfeld Ballroom in New York City. The evening featured a performance by Broadway and television star Krysta Rodriguez, who is also a cancer survivor. The Corporate Achievement Award was presented to Mastercard, with Craig Vosburg, Mastercard’s Chief Product Officer accepting on Mastercard’s behalf. **The gala raised over \$1,000,000 for the second time in a row.**

WALK FOR HOPE

On November 6, more than 200 people participated in the 19th annual 5K walk in Woodbury, NY, to honor the memory of loved ones lost to lung cancer, to celebrate survivors and to support those facing a lung cancer diagnosis. Thanks to our volunteers and supporters’ generosity, **over \$95,000 was raised to fund CancerCare’s direct support services and programs for anyone affected by a lung cancer diagnosis.**



OUR FUNDRAISERS AND EVENTS | SUPPORTING CANCERCARE

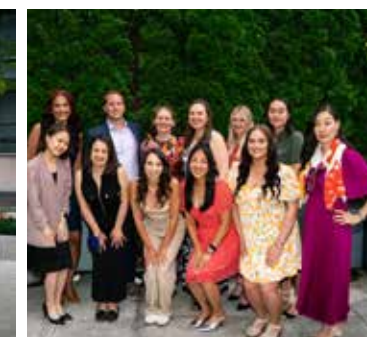
FESTIVAL OF HOPE NEW JERSEY GALA

The 35th Annual Festival of Hope Gala raised over \$150,000 for CancerCare’s free support services. The 2023 Corporate Achievement Award went to Daiichi Sankyo, which is dedicated to developing new therapies and educational resources for people with cancer. Gissou DeCotiis, Daiichi Sankyo’s Global Head of Advocacy & Strategic Relations, accepted the award.



YOUNG PROFESSIONALS COMMITTEE’S COCKTAILS FOR A CAUSE

The sixth annual “Cocktails for a Cause” event saw the Young Professionals Committee raise double what they expected as over 140 guests and supporters bid on auction items ranging from tickets to the US Open and LegoLand, Pilates classes and much more in order to deliver scholarships to students impacted by cancer.






the *CANCERcare*® corporate
CIRCLE OF HOPE

PREMIER



SUSTAINERS



FRIENDS



THANK YOU TO OUR SUPPORTERS

Thanks to our generous donors, CancerCare raised \$104.6 million to support our programs and services. We would like to especially acknowledge the donors who contributed \$500 or more this year.

2Seventy
AbbVie Inc.
Mr. Eric Aboaf and Ms. Cheryl Whaley
AFLAC
Mr. and Mrs. Gerald Aksen
Ms. Karen Alameddine
Mr. Imdad Ali
The Alice Elliot 2014 Trust
Mr. Timothy S. Allen
AllianceRx Walgreens Pharmacy
Alliance Trucking
AmazonSmile Foundation
American Society of Clinical Oncology
America's Best Local Charities
Amgen, Inc.
Amie's Place Foundation
Mr. Owen Anastasia
Andrew and Merrill Silver Fund
Anna Fuller Fund
Anonymous
APM Cares
Dr. Alan Appelbaum
Mr. Michael Apstein
ArentFox Schiff LLP
Ms. Alison Arrighi
Arthur I. Meyer Jewish Academy
Mr. William Ashton
The Assistance Fund
Astellas
AstraZeneca Pharma

Mr. Matthew Avellino
Ms. Adriana Backmann
Mr. Bob Bailey
Mr. William Baker
Mr. Agron Bakiu
Baldwin Risk Partners
Bank of America Foundation
Mr. Michael Barasch
Barbara Brooke Manning Charitable Fund
Mr. James D. Barker
Ms. Sharon R. Barner
Mr. and Mrs. Jeff Barrow
Mr. and Mrs. Dan Bass
Ms. Sondra S. Beaulieu
Ms. Claudia Beckmann
BeiGene
Ms. Keisha Belinfanti
Janet Dewart Bell, PhD
Ms. Marina Belokon
Mr. Mark Benhar
Mr. and Mrs. Alan Berlow
Mrs. Nancy Bernardini
Betty Marks Living Trust
Betty Sussman Trust
Mr. Nailesh Bhatt
Mr. James Bigglestone
Bill and Melinda Gates Foundation
Mr. Thomas and Mrs. Robin Bisighini
Bladder Cancer Advocacy Network
Bloomberg Philanthropies

Blueprint Medicines Corp.
BluPrint Oncology
Mr. John Blusonis
Dr. and Mrs. S. Bodenheimer
Boehringer Ingelheim Pharmaceuticals, Inc.
Ms. Marianne Boesky
Mr. and Mrs. Thomas G. Bolin
Mr. John Bombace
Mr. Luca Bonardi
Borell Charitables Account
Mr. Chris Boynton
Ms. Eileen Brennan
Bristol-Myers Squibb
Ms. Linda Brooks
Ms. Joan Brower
Mr. Richard W. Brown
Ms. Lara Burniston
Mr. and Mrs. Allen M. Burns
Mr. David V. and Mrs. Linda A. Campbell
Ms. Kristen Camputarò
Ms. Lori Canell
Carbiener Family Charitable Fund
Mr. and Mrs. James Carle
Mrs. Maryann T. Carlino
Mr. David Carlson
Mr. Vincent T. Carr
Mr. Rob Caruano
Castle Hill Recycling/Allcity Recycling
CBIZ, Inc.
CC&I Services, LLC

Mr. James V. Celentano
Ms. Tiama Chaar
Ms. Nancy Chapman
Ms. Kimberly N. Charles
Charles and Mildred Schnurmacher Foundation, Inc.
Mr. Rakesh Chaudhari
Ms. Michelle Choo
Mr. Ashish Chowdhry
Mr. and Mrs. Herbert Cohen
Mr. Richard S. Cohen
Collection XIX, Ltd.
Ms. Olivia Colson and Mr. Peter Sundheim
Community Oncology Alliance
Computer Design and Integration
Mrs. Kristen Connell
Ms. Colleen Cook
Mrs. Jan Myers Cook, Esq.
Mr. Andrew Coop
Cooperman Barnabas Medical Center
The Copeland Charitable Fund
Ms. Alice E. Corjescu
Mr. Stephen Corman
Mr. Brian Costigan
CRC Group
Ms. Mary Walsh Crevi
Ms. Lisa Cruz
Mr. Daniel Culliford
CVE North America
D2 Creative
Mr. and Mrs. Robert D'Addario III
Daiichi Sankyo, Inc.
Ms. Jessica L. Daley
Mr. Michael J. Daly
Mrs. Norma T. Dana
Dr. Steven Danatos
Ms. Cheryl Davenport
The David and Alan Greene Family Foundation
Mr. Thomas De Martini
Dr. Doug Dean
Debbie's Dream Foundation Inc.
Mr. Andrew P. DeCarlo

Deciphera
Mr. Michael DeFabrizio
Deloitte
Donn and Joyce Delson
Mrs. Elisa Delson
Mr. Greg Delson
Mr. Jeff Delson
Mr. Anthony Denogean
Mrs. Danielle Di Genova - Miller
Mrs. Margaret Diaz-Cruz
Ms. Eva DiMichael
Mr. Dmitry Dinces
Mr. Kevin Dinnie
The Don and Marilyn Hayden Family Foundation
Mr. Thomas Donahue
Ms. Catherine Donnelly
Mr. Robert Donovan
Ms. Karrie Dooley
Dorothy and David Schachne Charitable Fund
Mr. Christopher Douglas
The Duffy Family Fund
Dr. Laura S. Duffy
Mr. and Mrs. David Duleba
Mr. John Durante
Mr. and Mrs. Robert and Joan Easton
Edelman
Dr. and Mrs. Colin S. Edwards
Eisai Inc.
EisnerAmper LLP
Mr. Osama El Shamy
Mr. Martin Elias
Eli Lilly and Company
Ms. Barbara C. Elster
EMD Serono, Inc.
Mr. Howard Engelhart
Mr. Russell Ephraim
Dr. Irwin Epstein
Mr. Richard Epstein
Ms. Jennifer Erickson
Ernst and Young LLP
Ms. Rosa Esposito
Estate of Blanche Cirker

Estate of Cecelia M. Adkins
Estate of Charles H. Murray
Estate of Diane M. Hopsia
Estate of Eleanor Bronstein
Estate of Eleanor Fulcher
Estate of Ellen A. Morrone
Estate of Emiliano Mazzarella
Estate of Evelyn Lorch
Estate of Emanuel Jampol
Estate of Kathy Wolever
Estate of Kenneth G. Burns and Earlene A. Burns Family Trust
Estee Lauder Companies Inc.
Ms. Kimberly J. Etscheid
Mr. Joseph Evans
Exact Sciences Corporation
Exelixis, Inc.
Facebook, Inc.
Mr. John F. Facilla
Fay J. Lindner Foundation
Mr. Erik Feldmann
Ms. Barbara Fernandez
Mr. and Mrs. Christopher Ferreira
The Feuerring Foundation
Mr. and Mrs. Flavio Figueiredo
First Commerce Bank
Mr. Gregg Fisher
Mr. and Mrs. Scott W. Fisher
Ms. Nancy Fitch
Ms. Jean D. Fitzgerald
Mr. John Fitzgerald
Ms. Lynn L. Flanagan
Ms. Lynn M. Foggie
Mr. Brian S. Foley
Ms. Lilly Forrow
Mr. Alan Fortich
Ms. Ignatia Foti
Foundation Medicine, Inc.
Mr. Randy Fouts
Mr. Dominick Frantellizzi
Franz W. Sichel Foundation
Mr. Brian P. Friedman

Ms. Maren Friedman
Mr. and Mrs. Paul M. Friedman
Mr. and Mrs. Steven S. Friedman
Ms. Susie Friedman
Ms. Ellen Friend
Mr. David S. Furman
Mr. and Mrs. Steve and Linda Galasso
Mr. Robert Galishoff
Ms. Tracey Gamble
Ms. Marianne Gandee
Ms. Rachel Garb
Mr. Brian A. Garofalo
Mr. and Mrs. Steven Geismar
Mr. Robert W. Gelfman
Genentech, Inc.
Genmab US, Inc.
Ms. Renee Gennarelli
The Gerbino Family Foundation
Ms. Linda L. Gerdes
Mr. Bruce Gerstein
Mr. Joseph Giampapa
Ms. Jillian Gibbs
Ms. Evelyn Gilder
Gilead Sciences, Inc.
Mr. and Mrs. Andrew Gilmore
Mr. Alex Gipson
Mr. and Mrs. Daniel Glatter
GlaxoSmithKline
Mr. Christopher Goelet
Mr. Philip Goelet
Mr. William Goeren
Mr. David Goldberg
Dr. Robert S. Goldberger
Ms. Patricia J. Goldsmith
Ms. Jackie Goldstein
Mr. Ross Goldstein
Google Inc.
Ms. Julie V. Goosman
Gordon Brothers Foundation
Mr. Mark Gorman

Mr. Michael Gould
Ms. Ann M. Gray
Mrs. Diane Greenwald
Ms. Kathleen M. Griffin
Ms. Barbara Grocki
Mr. and Mrs. Dan S. Grossman
Mr. Edmund A. Grossman
Mr. Josh Groth
Grusky Schardt Family Trust
Ms. Cheryl Guerin
Ms. Barbara Guidos
Mr. John Guillot
Gunnar and Lillian Nicholson Foundation Trust
Ms. Devorah M. Haberman
Hagedorn Fund
Ms. Bridget Hager
Ms. Heidi J. Halpern
Mr. Matthew Halprin
Mr. Yousif Hamati
Mr. and Mrs. Michael A. Hamilton
Mr. David R. Hance
Ms. Janet S. Hankin
Mr. Scott Harbert
Mr. Lance Harris
Henry E. Niles Foundation, Inc.
Mrs. Wendy Hashmall
Ms. Tara Hawley
Ms. Jan Hazard
Ms. Lisa Hefner
Helen Hoffritz Charitable Trust
Mrs. Joyce Heller
Mr. Jay Herman
Ms. Fiona Herr
Ms. Kelley Hicks
Mr. and Mrs. Paul G. Himmelright
Mr. Mark Hirsch
Hirshberg Foundation for Pancreatic
Cancer Research
Hirtle, Callaghan and Co.
Mr. and Mrs. Joel Hochberg

Mrs. Christine Converse Hogan
Mr. Joseph Holtzman
Ms. Eunice E. Hong
Mr. and Mrs. James Hopkins
Horizon Foundation for New Jersey
Mr. and Mrs. Craig M. Horowitz
Mr. Steven Horowitz
Ms. Jean M. Howard
Ms. Kay Hsu and Mr. Anthony Zaret
Mr. Robert Hughes
Mr. Jeremiah Hunt
Hunters Point Recycling Inc.
Mr. and Mrs. Robert J. Hurban
Ms. Pamela M. Hussey
Ms. Barbara Ianni
Mr. and Mrs. Ronald J. Iervolino
Ms. Eva Ikonpmakos
Mr. Santana Inniss
Investors Foundation
Mr. Robert M. Irvine
Ms. Brita Isselin
It Takes a Village! Together We Can
Outreach Ministries
Mr. Sidney S. Jacobson
Ms. Melissa C. Jaehnig
James E. Fitzgerald, Inc.
The Janice and Victor Romley Charitable Fund
Janssen Pharmaceutical Companies
of Johnson & Johnson
Mr. Don Jayasinghe
Jazz Pharmaceuticals
JDS Fund
Mrs. Lisa Jeffries
Ms. Patricia F. Jewell
Jonathan A. and Judith T. Marshall Fund
Ms. Patricia H. Jones
Jules and Evelyn Jacobsen Charitable Trust
Ms. Denise F. Juliano
Ms. Carol F. Kaimowitz
Ms. Robin Kalmanson

Mr. Benjamin Kan
Mr. and Mrs. Daniel and Susan Kane
The Kantor Foundation, Inc.
Mr. David Kappos
Mr. Gary Karlitz and Ms. Rosalind Beck
Ms. Andrea L. Kavaler
Mr. John Keating
Ms. Valerie V. Kelleher
Mr. James W. Kelly
Mrs. Kathleen Kennerley
Mr. and Mrs. Michael A. Kennerley
Mr. Ed Kenney
Mr. Shawn Keogan
Mr. Brad Kilbury
Ms. Tina R. Kile
Ms. Lisa Kimbro and Mr. Ray Lynch
Ms. Pamela Kindler
Kite Pharma, Inc.
Ms. Regina Klaatsch
Ms. Jane Klain
Mr. and Mrs. Douglas M. Klock
Kohlberg Kravis Roberts
Mr. Yitz Kopel
Ms. Beata Korytowsky
KPMG LLP
Krakow Family Fund
Ms. Louise Kramer
Mr. Alton Kremer
Ms. Cynthia Kreng
Mr. Eric Kuehfluss
Mr. Emil Kurak
Kurt R. and Marion V. Anker Trust
Mr. Joel Kurtzberg
Mr. Stanley H. Kwecien
The Labcorp Charitable Foundation
Mr. Lyell Lamont
Ms. Margot E. Landman
Mrs. Pauline Lascano
Laurie Kayden Foundation
Mr. Alexander J. Lavecchia

Mrs. Anat Laytner
Mr. Jason Leder
Mrs. Nancy L. Lee
Mr. Randy Legg
Mr. Artie Leibowitz
Mr. and Mrs. David and Donna Lester
Mr. Gene Leung
Ms. Francine D. Levine
Ms. Janice Levine
Mr. Joshua J. Leviton
Dr. J. Leonard Lichtenfeld
Lillian Schenck Foundation
Ms. Sandra K. Lilly
Ms. and Mr. Jessica Lindsey
Ms. Linda Livermore
Llewellyn Burchell Perpetual Charitable Trust
Ms. Diane Loughlin
Mr. Bruce A. Loughran
Mr. Todd Lowthers
Lubcher and Ganis, LLP
Mr. Merlyn R. Luhr
Lumanity CSE
Mr. and Mrs. Philip and Christine Lumb
LUNgevity Foundation
Mr. and Mrs. Michael P. Lynch
Mr. Peter A. Lyons
Ms. Caroleen Mackin
Mr. Cecil D. MacRae
MacroGenics
Mr. Brad Maloney
Ms. Myla Maloney
Mrs. Ellen S. Manasse
Manhasset Women's Coalition Against
Breast Cancer (MWCABC)
Ms. Elaine Manthei
The Marcia J. Hopper Living Trust
Marks Paneth LLP
Ms. Dorothy Marks
Marsh and McLennan Agency
Mary Delahanty Clapham Charitable Trust

Mary Kay Ash Foundation
Mastercard International Inc.
The Matays Law Group PLLC
Ms. Patricia Matrone
Maverick Carting Inc.
Max and Victoria Dreyfus Foundation
Dr. Thomas and Musa Mayer
Mr. Edward McAuliffe
Ms. Lynn McCormick
Dr. Harry McDermott
Ms. Joan A. McKay
Mr. William J. Mckee Jr.
McKesson Foundation
Mr. Richard Mead
Ms. Marisol Mendez Person
Merck & Co., Inc.
Ms. Catherine Mercurio
Dr. Carolyn Messner, DSW, MSW
Metzger-Price Fund, Inc.
Michele and Agnese Cestone Foundation Inc
Mr. Alvin H. Miller
Mrs. Ellen Miller Sonet
Mr. and Mrs. Steven P. Miller
Ms. Stephanie Miranda
Mirati Therapeutics
Ms. Kyra Monson
Mr. Thomas Moore
MorphoSys AG
Mr. Michael R. Morrone
Ms. Maria Moschonisiou
Loretta and Raymond J. Moseman
Mary K. Moseman
Ms. Judith Mossholder
Mr. Ted Moudis
Mr. David S. Moyer
Ms. Jessica Mrsny
Ms. Julie Mueller
Mr. Abhi Mukundan
Mr. and Mrs. Joseph Mulligan
PC Murphy

Mr. Matthew Murray
Mrs. Mildred E. Murray
Mr. Michael Mutino
Naomi K. Raber 2020 Charitable
Lead Annuity Trust 1
Mr. Ira Nathel
Mr. Charles Nease
Neogenomics Laboratories Inc.
Mrs. Susan Newman
New York Community Trust (NYCT)
New York State Health Foundation (NYSHF)
Newmark and Company Real Estate, Inc.
Mr. Erik A. Nicolaysen
Nishikawa Family Foundation
NNN Properties, LLC
Mr. Brian Nolan
Mr. and Mrs. Michael C. Nolan
Mr. James M. Norris and Mrs. Dinae Norris
Mr. Paul J. Norris
Northern New Jersey Community Foundation
Notified
Novartis Pharmaceuticals Corporation
Novocure
Ms. Patricia O'Connor
Mr. and Mrs. Adesembo Odunlami
Ms. Karen Olah
Mr. Paul O'Leary
Ms. Rhoda L. Olin
Onco360 Oncology Pharmacy
Mr. Andrew O'Neill
Oppenheimer Haas Trust
Ms. and Mrs. Janet Orsini
Mr. and Mrs. Timothy P. Ostby
Ms. Pamela Ostling
Mr. Peter Pace
Ms. Marsha J. Palanci
Pamela Heineking Irrevocable Trust
Paramount Pictures
Mr. and Mrs. Michael and Lori Parisi
Mr. David Park

Mrs. Barbara Parmese
Ms. Chandni Patel
Patricia A. O'Callaghan Animal Care Foundation
Mrs. Arlene Patterson
Paycom Payroll LLC
Mr. and Mrs. James Pellizzi
Mr. and Mrs. William Pelster
Perlmutter Cancer Center
Mr. and Mrs. Robert Perro
Peter T. Lau Family Foundation
Mr. Mark Peters
Pfizer Inc.
Pharmaceutical Research and
Manufacturers of America
Pharmacyclics, Inc.
Ms. Serena Phillips
Pinpoint Patient Recruiting
Pink Aid
Mr. Andrew C. Pizzo
Mr. Joseph Platt
Mr. Justin Plouffe
PNC Bank
Point72, L.P.
Mr. Jason Pokorny
Mrs. Lauren M. Pollock
Pomeroy Family Fund
Mr. Nagavamsi Ponnekanti
Mr. Adam Potashnick
Mr. David M. Prael and Mrs. Jennifer Prael
Premier, Inc.
Mr. Nicholas Prey
PricewaterhouseCoopers LLP
Princeton Against Cancer Together
Progressive Insurance Foundation
Proponent Federal Credit Union
Prudential Financial Inc.
Mrs. Susan Puzo
Ms. Mary K. Quirk
Ms. Patricia E. Raber and Mr. Kenneth Max
Mr. Joel Radezky

Dr. Sarah Ramer
Ms. Jeanne Ramsey
Mr. Robert Raposa
RBC Capital Markets, LLC
Mr. William R. Reader
Mr. David E. Reaser
Recreation Farm Society, Inc.
Regeneron Pharmaceuticals, Inc.
Mr. David Reitzel
Ms. Antonina Renda
Responsible Recycling Charitable Foundation
Ms. Allyson Reynolds
Ms. Nancy Rheingrover
Richard S. Paul Revocable Trust
Mr. Dennis P. Ringel
Mr. Conor Roach
Rochelle and David Hirsch Foundation
Mr. Ed Rogowski
Mr. Alex Ross
Ms. Joan Ross
Mrs. Diane Rothstein
Mr. Franklin Rudolph
Ms. Barbara Russillo
Mr. Norman K. Sackar
Mr. Diego Sacristan
Mr. Stephen I. Sadove
Salesforce.com, Inc.
Mrs. Munir Saltoun
Ms. Myrna M. Sameth
The San Diego Foundation
Sanofi Genzyme
Mr. Santos S. Sanchez
Mr. Alex Santini
Sarah K. deCoizart Perpetual Charitable Trust
Mr. Andrew Satran
Satty, Levine and Ciacco, CPAs, P.C.
Mr. Joseph Scarinci
Ms. Jodi Schenck
Mr. Robert L. Schmerker
Mr. and Mrs. Leonard Schuchman

Schwartz Easton Fishbein Giving Fund
Schweckendieck Trust
Mr. and Mrs. Jerome Schwartz
Ms. Sara Scott
Seattle Genetics (Seagen)
Ms. Harriet Sepinwall
Mr. and Mrs. William R. Serpe
Service Federal Credit Union
Servier Pharmaceuticals
Mr. Matt Sexton
Mr. Harvey Shapiro
Mr. Samuel H. Shapiro
Shelter Rock Foundation
The Shore Spot Inc.
Ms. Barbara Shulman
Mr. Thomas Shute
Sidney Milton and Leoma Simon Foundation
Mr. Benjamin Silver
Dr. Sandra S. Silverberg
Silverman Foundation
Mr. and Mrs. Myron Silverman
Simons Foundation
Mr. Amiel L. Singer
Ms. Jacquelyn Singley
Mrs. Nanna Sito Nielsen
Ms. Susan Smirnoff and Dr. Kirk Zachary
Dr. Liat Solomovici, OD
Mr. Nils R. Sorensen
Ms. Jessica Spahn
Nitsana Spigland, M.D and Peter H. Kudler, M.D
Ms. Christina Springer
Mr. Tim P. Stanard
Mr. Darryl S. Steckler
Mr. Jeffrey Stedman
Mr. and Mrs. Robert L. Steiger
Mr. Brian Steinlicht
Stemline Therapeutics, Inc.
Steppacher Family Charitable Fund
Mr. Walter M. Steppacher IV
Ms. Lynn S. Stern
Steve and Lenore Newman Family Foundation

Mr. Robert G. Stevens
Mr. Hernan A. Stigliano
Ms. Ariann Polasky Stone
Mr. Walter B. Stone
Ms. Vera Strauss
Stuart S. Applebaum Giving Foundation
Sussman Family Fund at Rochester Area
Community Foundation
Ms. Iris Sutz
Mr. John Swartz
Sylvia Lester Fund
Mr. Stephen Symonds
Taiho Oncology, Inc.
Takeda Oncology
Dr. Robert E. Tarjan
Tavener Family Charitable Fund
Ms. Renee Taylor-Foles
Ms. Martha Teichner
Mr. David Teitelbaum
Mrs. Sharon Telesca Feurer
Ms. Cathyann Theilmeier
Mr. John A. Traylor
Mrs. Kris Triolo
Triple Negative Breast Cancer Foundation
Ms. Remi Tseng
Ms. Kathleen Tunnell Handel
Ms. Nicole Turner
Turning Point Therapeutics
Ms. Julieann Ulin
Mr. Greg Ulrich
United Pavement Marking Industries, Inc.
United Way of Long Island
UnitedHealth Group
Ms. Avani Vaidya
The Valley Hospital
Valley Hospital Foundation
Ms. Wilma van Velzen
Mrs. Joanne M. Vanak, BSN
Ms. Sairah Varughese
Ms. Mary Ventrella
Ms. Samantha E. Viglienghi

Mr. Thomas Vitello
Ms. Laura Vitez
Mr. Craig Vosburg
Mr. Russell Wachtler
Ms. Cari Walling
Ms. Christine Watson
Ms. Nicole Weidner
Mr. and Mrs. Andrew Weinberger
Dr. Steve Weintraub
Mr. Thomas Weir
Mrs. Mireya Kam and Mr. Maximilian Weise
Ms. Yvonne Weissenstein
Mr. Timothy Welliver
Wells Fargo
Werner Enterprises
Sarah and Eric West
Ms. Kristin T. Westfall
The Westfield Foundation
Westport Woman's Club
WideOrbit
Dr. and Mrs. Michael D. Widlitz
Wiles Charitable Gift Fund
Willets Point Asphalt Corp
The William and Eleanor Greenblatt Foundation
William J. Burns Foundation, Inc.
The Winfield Foundation
Ms. Takouhy Wise
Ms. Harriet Woods
Workwear Outfitters, LLC
Ms. Joann Wray
Ms. Anne Wymard
Yahoo Employee Giving
Yardi Systems, Inc.
Ms. Tammy Yu
Mrs. Dawn Zador
Mr. Andrew Zanga
Mr. Barry Zelman
The Zurich U.S. Foundation
Mr. and Mrs. Burt Zweigenhaft



CANCERCARE'S BOARDS AND BOARD MEMBERS

CancerCare Board of Trustees

Michael Parisi, Board President

Chief Executive Officer, Humanity

**Andrew C. Pizzo,
Board Executive Vice President**

Owner & President, Collection XIIX, Ltd.

**Joanne Vanak, MSN, BSN,
Board Secretary**

*Retired Senior Director,
Johnson & Johnson Inc.*

Loretta Moseman, Board Treasurer

*Retired Citi Deputy Treasurer/CBNA
Treasurer, Citibank NA Treasury*

**Janet Dewart Bell,
Ph.D. in Leadership and Change
Antioch University,**

*Founder/President of LEAD
InterGenerational Solutions, Inc.*

James Bigglestone

*Head of Business & Capital
Development, Engineers Gate*

Jessica Daley

*Group Vice President, Strategic Sourcing,
Chief Pharmacy Officer, Premier, Inc.*

Margaret R. Diaz-Cruz, LMSW

*Retired Director, Stipendiary Program
Isaac H. Tuttle Fund*

John N. Evans, CPA

*Retired, Partner, Marks
Paneth & Shron LLP*

Stephen M. Fields

Private Equity Lawyer

Flavio Figueiredo

*Global Head of Corporate FX Sales
CitiGroup Centre*

Renata Esper Figueiredo

Paul M. Friedman

*Retired Senior Managing Director,
Bear Stearns & Company, Inc.*

Patti Fine Jewell

*Senior Director, Patient Advocacy,
Pfizer Inc.*

Kris Johnson

Executive Assistant, Mary Kay, Inc.

Denise Juliano

*Group Vice President, Life Sciences,
Premier, Inc.*

John W. Keating

Corporate Vice President, Genmab, Inc.

Alton B. Kremer, MD, PhD

*Retired Former Chief Clinical Officer
& Chief Medical Officer, Oncology
Business Group, Eisai*

Alexander Lavecchia, AIA

Architect

J. Leonard Lichtenfeld, MD, MACP

*Former Deputy Chief Medical Officer for
the American Cancer Society*

Michael R. Morrone

*Director of Corporate Tax
Horizon Healthcare Services, Inc.
Horizon Blue Cross Blue Shield of NJ*

Marsha J. Palanci

*Retired, Cornerstone
Communications Ltd.*

William C. Pelster

*Retired Partner at Skadden, Arps, Slate,
Meagher & Flom LLP*

Harvey Shapiro

Managing Partner Sargoy Stein

Susan Smirnoff

*Healthcare Communications and
Public Relations Consultant*

Walter (Chip) Steppacher

*Former Managing Director, JPMorgan
Chase & Co.*

Craig Vosburg

Chief Product Officer, Mastercard

CANCERCARE'S BOARDS AND BOARD MEMBERS

CancerCare of Port Washington

Renee Gennarelli, President

Beth Useloff, Executive Vice President

Tina Revelant, Fundraising and Technology Vice President

Maria Augustino, Membership Vice President

Theresa Hornberger, Treasurer

Lisa Idol, Social Services Liaison

Joanne Rowland, Corresponding Secretary

Susan Bishop Copeland, Recording Secretary

Patricia Atkins, Publicity/Social Media Manager

Nominating Committee:

Ann Daum

Judy Doyle

Barbara Faticone

Jennifer Scotto-Robinson

Paul Revelant

Red Stocking Revue Co-Chair

Christine Eisen

Supporting Board/Committee Members:

Susette Franklin

Nancy Morandi

CANCERCARE'S BOARDS AND BOARD MEMBERS

CancerCare Young Professionals Committee

Alice Badamo

Bristol Myers Squibb

John Badstubner

SalesForce

Shakirat Brown

IQIVA

Kristen Computaro

Flatiron Institute

Olivia Colson

Snarkitecture

Andrew Gilmore

Capital One

Allison Lau

Refreshments, BFA Industries

Alexander Lavecchia, AIA

Peter Marino Architect

Jordan Littlejohn

NBCUniversal

Cynthia Luu

Okta

Christine Megalla

Lumanity

Marc Morales

The Center for NYC Neighborhoods

Adesumbo Odunlami

Bristol Meyers Squibb

Drew Sauck

Janssen Pharmaceuticals

Samantha Sayers

Amazon

Rebecca Sichel

Megan Whitman

Young Survival Coalition

Anne Wymard

Point72 Asset Management

THANK YOU TO OUR SUPPORTERS

Peter & Jeri Dejana Foundation

Readiworks

Modoramo Media

Victor Talbots

CANCERCARE FINANCIAL SUMMARY

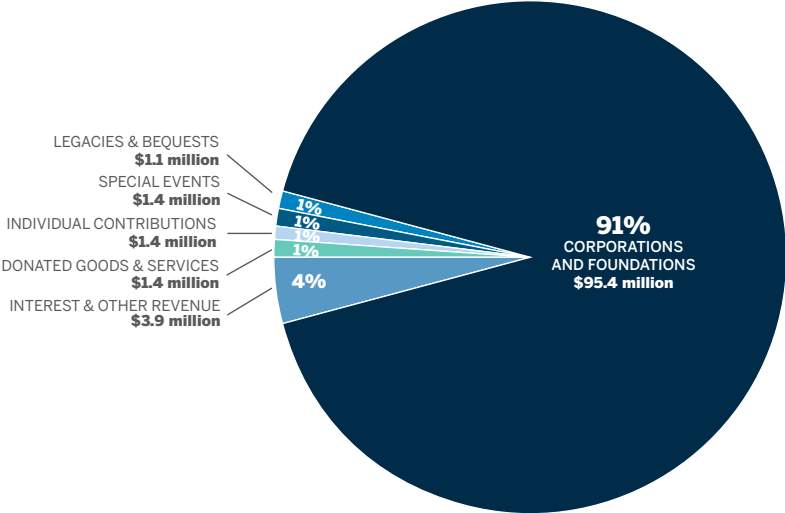
Founded in 1944, CancerCare is the leading national organization providing free, professional support services and information to help people manage the emotional, practical and financial challenges of cancer. Our comprehensive services include resource navigation, counseling and support groups over the phone, online and in-person, educational workshops, publications and financial and co-payment assistance. All CancerCare services are provided by master’s-prepared oncology social workers and world-leading cancer experts.

To learn more, visit www.cancercare.org or call **800-813-HOPE (4673)**.

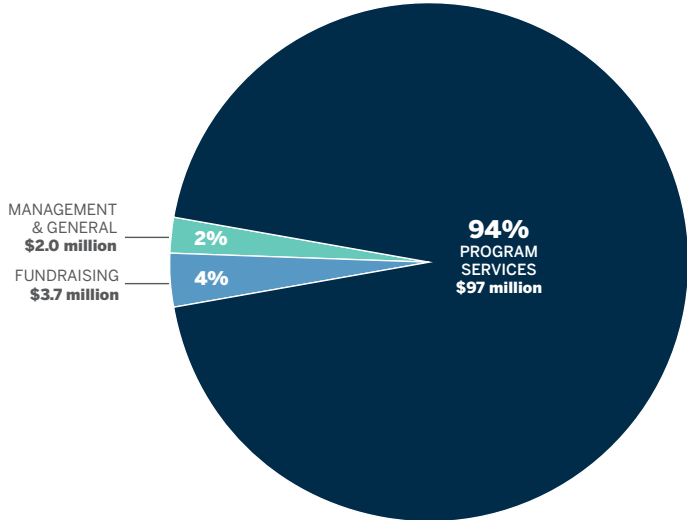
- CancerCare provided **181,780 services** to people affected by cancer, serving clients with **104 different types** of cancer in all **50 states** and **3 U.S. territories**.
- Our oncology social workers answered **46,436 calls** to our Hopeline.
- Our staff provided **52,346 hours of emotional and practical support** through our Hopeline, individual counseling, support groups, community programs and more.
- CancerCare provided **\$81 million** in financial and co-payment assistance to **28,126 people** for costs including transportation, practical needs and to help pay for cancer medications.
- CancerCare welcomed **2 million visits** to our websites, and users completed **61,266 searches** in our Online Helping Hand to find practical and financial assistance.
- We distributed **966,203 print and digital publications** to people living with cancer, caregivers, loved ones and health care professionals.
- Leading experts in oncology led **68 CancerCare Connect® Education Workshops**, from **133 faculty members** and **76 partner organizations**, drawing **46,783 participants**.
- The Pet Assistance & Wellness (PAW) Program helped **1,336 clients** keep their pet in the home.
- My Cancer Circle™ served **27,322 users** in **2,155 caregiver communities**.

The information presented herein reflects the consolidated financial statements for CancerCare, as of and for the year ended June 30, 2023. A copy of CancerCare’s latest financial report may be obtained online at: www.cancercare.org/about/financials, or by writing to: New York State Department of Law, Charities Bureau, 120 Broadway, New York, NY 10006.

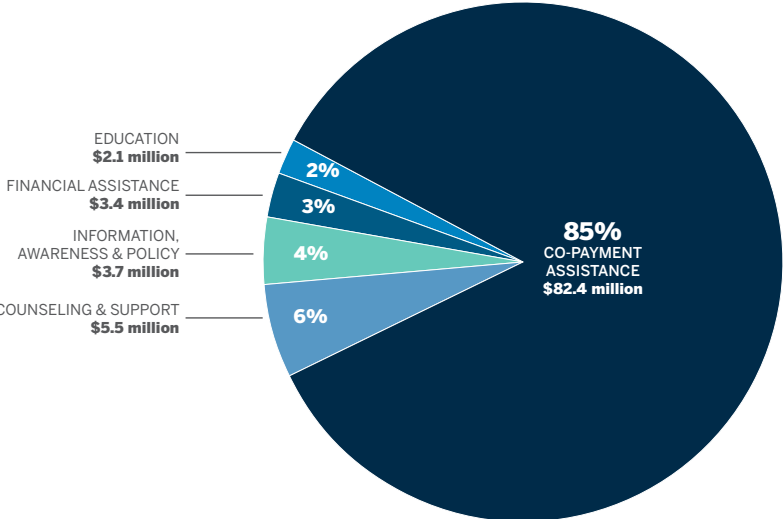
Revenue
\$104.6 million



Expenses
\$102.7 million



Program Service Expense Distribution
\$97.1 million



As one of the most efficient nonprofit organizations, 94 cents of every dollar we raise goes directly to programs helping people with cancer. Donate today at www.cancercare.org/donate.



CANCER*care*[®]

Over 75 Years of Help and Hope

NATIONAL | 275 SEVENTH AVENUE, NEW YORK, NY 10001
WWW.CANCERCARE.ORG | 800-813-HOPE (4673) | INFO@CANCERCARE.ORG