



CANCER*care*®

Over 75 Years of Help and Hope

# ANNUAL REPORT

Fiscal Year 2022

NATIONAL OFFICE | 275 SEVENTH AVENUE, NEW YORK, NY 10001

WWW.CANCERCARE.ORG | 800-813-HOPE (4673) | E: INFO@CANCERCARE.ORG





# TABLE OF CONTENTS

<b>Letter from the Chief Executive Officer &amp; Board of Trustees President</b>	<b>2</b>
<b>Our Mission</b>	<b>3</b>
<b>How We Help</b>	<b>4</b>
<b>Our Impact: Who We Help</b>	<b>10</b>
<b>Advocacy &amp; Public Policy</b>	<b>18</b>
<b>CancerCare Showcases Their Expertise</b>	<b>20</b>
<b>Working Together to Spread Help &amp; Hope</b>	<b>22</b>
<b>CancerCare's Fundraisers &amp; Events</b>	<b>24</b>
<b>Corporate Circle of Hope Listing</b>	<b>27</b>
<b>Thank You to Our Supporters</b>	<b>28</b>
<b>CancerCare's Boards &amp; Board Members</b>	<b>33</b>
<b>Financial Summary</b>	<b>37</b>



# DEAR FRIENDS OF CANCERCARE,



Patricia J. Goldsmith  
Chief Executive Officer

We are so grateful and excited to be a part of an organization that has such a profound impact on the lives of people affected by cancer across the country. We are also extremely thankful for each of you. The effects of your support, as donors, volunteers, friends and advocates, have allowed CancerCare to serve millions of individuals over the last 78 years.

Despite the challenges we have all faced in the wake of a pandemic, we have continued to grow and evolve as an organization, adapting to our new “normal.” CancerCare’s passion for our clients is proven in the work our team members do every day, with our master’s-prepared oncology social workers at the forefront.

In this annual report, we are proud to showcase the programs and services that we provided in fiscal year 2022, including our Pet Assistance and Wellness (PAW) Program, CancerCare for Kids, Resource Navigation and our new Coping Circle Workshops.

***On behalf of the entire CancerCare staff, the Board of Trustees and every client who has utilized our free services, thank you for your continued support and dedication to our mission.***



Michael Parisi  
President, Board of Trustees

Sincerely,

Patricia J. Goldsmith  
Chief Executive Officer, CancerCare

Michael Parisi  
President, CancerCare Board of Trustees



# OUR MISSION

**Founded in 1944, CancerCare is the leading national organization providing free, professional support services and information to help people manage the emotional, practical and financial challenges of cancer. Our comprehensive services include resource navigation, counseling and support groups over the phone, online and in-person, educational workshops, publications and financial and co-payment assistance. All CancerCare services are provided by master's-prepared oncology social workers and world-leading cancer experts.**



CANCERcare®

Over 75 Years of Help and Hope



# HOW WE HELP



## RESOURCE NAVIGATION

CancerCare offers free resource navigation by phone to people nationwide living with cancer, post-treatment survivors and caregivers affected by cancer. Our social workers and specialists assist clients with overcoming barriers to care, improving communication with their medical teams and finding resources in their community.

## SUPPORT GROUPS

CancerCare's support groups provide people affected by cancer with a safe space to connect to others who relate to their experiences. Guided by our master's-prepared oncology social workers, these groups allow participants to exchange support, get information and receive guidance while discussing the unique challenges of being impacted by cancer. Groups are hosted live via a secure updated video platform, telephone or online. This year, we hosted **24 support groups for people living with cancer, post-treatment survivors, caregivers and the bereaved.**

## LIVE (VIDEO)

CancerCare's live support groups offer the opportunity to connect with others who share similar concerns and experiences and are moderated by master's-prepared oncology social workers. Groups are available for residents of New York and New Jersey via video-conferencing or over the telephone.

## ONLINE

Led by professional, master's-prepared oncology social workers, our online support groups take place using a password-protected message board format. Groups are held for 15 weeks at a time, and members can participate by posting in the groups 24 hours a day, 7 days a week. These groups are open to anyone in the United States, Puerto Rico and other U.S. Territories.

## INDIVIDUAL COUNSELING

Each of our client's experiences with cancer is unique and so are their emotional and practical needs. With CancerCare's individual counseling, our oncology social workers offer one-on-one psychosocial support to people living with cancer, post-treatment survivors, caregivers and the bereaved in New York and New Jersey.



## HOW WE HELP

### CANCERCARE HOPELINE

**800-813-HOPE (4673)**

Run by our staff of master's-prepared oncology social workers, our toll-free Hopeline gives support and resources to anyone affected by cancer nationwide. This year, our social workers answered **38,841 calls** through our Hopeline.

### TRIPLE NEGATIVE BREAST CANCER HELPLINE

**877-880-TNBC (8622)**

In partnership with the Triple Negative Breast Cancer Foundation, our Triple Negative Breast Cancer Helpline offers free, professional support services to patients coping with a triple negative breast cancer diagnosis and their loved ones.

### LUNGEVITY LUNG CANCER HELPLINE

**844-360-LUNG (5864)**

CancerCare and LUNgevity continue to partner to deliver free, personalized support to caregivers and patients facing a lung cancer diagnosis through the Lung Cancer Helpline, which supports a range of emotional, financial and informational needs.

### DEBBIE'S DREAM STOMACH CANCER HELPLINE

**1-877-646-5864**

CancerCare's continued partnership with Debbie's Dream Foundation: Curing Stomach Cancer provides dedicated emotional support to stomach cancer patients, their families, caregivers and those who've lost loved ones to the disease through Debbie's Dream Stomach Cancer Helpline. The helpline is run by a team of master's-prepared oncology social workers with specific expertise in the issues facing stomach cancer patients and their families.



Triple Negative  
Breast Cancer  
Foundation



**LUNGEVITY**

Find it. Treat it. Live.







### FINANCIAL ASSISTANCE AND CO-PAYMENT ASSISTANCE

The financial burdens of a cancer diagnosis can be overwhelming. CancerCare offers financial assistance to help with cancer-related costs such as transportation, child care, co-payments and more. This year, CancerCare provided **\$81 million in financial assistance to 28,664 individuals.**

### COVID-19 FUND

CancerCare launched a fund for those undergoing cancer treatment who were affected by COVID-19. The grant helped with the cost of food, medications, general household living expenses, transportation and childcare.



### COA/CANCERCARE PATIENT TRANSPORTATION PROGRAM

CancerCare and the Community Oncology Alliance (COA) continued to provide assistance for cancer patients who struggled with finding transportation to their oncologist appointments at the height of the COVID-19 pandemic. While it was active, the COA/CancerCare partnership provided almost **14,000 round-trip rides for those in active cancer treatment.**

### COA/CANCERCARE PATIENT FINANCIAL ASSISTANCE PROGRAM

CancerCare and Community Oncology Alliance (COA) continued their partnership to provide financial assistance to qualified cancer patients impacted by COVID-19 to pay their rent, mortgage and utilities, or purchase food and general household supplies.



# PET ASSISTANCE & WELLNESS (PAW) PROGRAM

At CancerCare, we know that a beloved pet can be a significant source of support for a person diagnosed with cancer. However, caring for a cat or dog can become increasingly challenging for those in active cancer treatment. CancerCare's PAW Program provides educational resources for cat and dog owners as well as financial assistance that helps them with the cost of pet food, veterinary bills, dog walking and more. **In 2022, we helped 463 people with cancer keep their pets at home.**

## AMIE'S PLACE

With the help of a one-year grant from Amie's Place Foundation, CancerCare's PAW Program offers a diverse array of educational resources that deliver critical information to those managing a cancer diagnosis while caring for their pets.

## O'CALLAGHAN FOUNDATION

Thanks to a \$1 million grant from the Patricia A. O'Callaghan Animal Care Foundation, CancerCare's PAW Program provides financial assistance for people with cancer to assist with expenses associated with their pets. The donation also helped to establish CancerCare's first endowment fund, ensuring the sustainability of the PAW Program for years to come.





### CONNECT EDUCATION WORKSHOPS

CancerCare Connect® Education Workshops are a free and accessible way to learn from leaders in oncology about cancer-related issues. These one-hour workshops offer the latest information on topics relevant to the cancer community, like updates on treatment options, clinical trials and so much more. Attendees may listen by phone or online, with podcasts available after each workshop. **Experts led 80 workshops this year, our highest number yet, featuring 270 presentations from 144 experts and 97 partner organizations, drawing 44,043 participants.**

### PUBLICATIONS

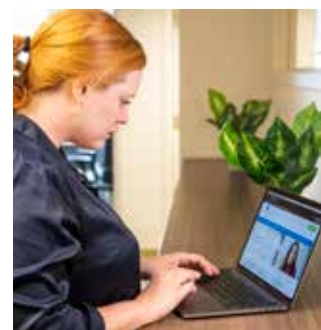
CancerCare maintains a library of comprehensive and accessible fact sheets and booklets giving expert insight into a variety of cancer-related topics. These can be read online and select titles are available in print. **This year we distributed 957,511 print and digital publications to people affected by cancer and health care professionals.**

### CANCERCARE'S WEBSITE

CancerCare's website makes our free resources and programs easily accessible. **This year, we welcomed 1.8 million visits.**

### HELPING HAND

CancerCare's Online Helping Hand is an extensive database of resources and services for people affected by cancer. It highlights up-to-date descriptions and contact information for hundreds of national and regional organizations covering an abundance of cancer-related issues. **Users completed 60,596 searches through our Online Helping Hand in 2022.**





**OUR IMPACT:  
WHO WE HELP**



## CLIENT/DONOR SPOTLIGHT

### BIANCA'S STORY



Bianca's mind went to a dark place when she was first diagnosed with stage I breast cancer. She immediately began treatment and tried to find others who were in the same situation. "The hardest part throughout this journey has been finding people that understand exactly what I'm going through," said Bianca. "That's where CancerCare came in and changed everything for me."

Bianca began to feel more positive after receiving free individual

counseling and attending support groups at CancerCare's national office. "Thanks to my social worker at CancerCare, I believe that cancer will just be another chapter in my life, not the end of my story. My diagnosis was a wake-up call for me to focus on doing what I love with my life and surround myself with positivity."

As an actress and director from Bulgaria, Bianca wanted to use her creativity to help others. She says this chapter in her life inspired her to create a documentary about people living with cancer, who she refers to as "Superheroes," and their inspirational stories of survival. Bianca says that focusing on her art has saved her life by pushing her mentally and physically to continue fighting. "The idea behind the movie came to me after I really needed motivation," says Bianca. "I wanted to think of a way to help others like CancerCare was helping me."



**"Thanks to my social worker at CancerCare, I believe that cancer will just be another chapter in my life, not the end of my story."**





## BACK-TO-SCHOOL PROGRAM

Since 2016, the CancerCare for Kids' Back-to-School Program has provided new backpacks full of school supplies to children and teens in the tri-state area. Families impacted by cancer already face many financial and emotional challenges, especially as many children were transitioning back to in-person learning. By providing free back-to-school supplies, this program helps to alleviate some of the stress in preparing for the academic year. This year, **140 free back-to-school packages were sent out to 65 families**, which included backpacks with notebooks, folders, pencil cases, markers, crayons and/or colored pencils and additional age-appropriate supplies.



## WINTER PROGRAMS

The CancerCare Winter Warmth Program provides children and teens who have been affected by cancer in the tri-state area with important winter supplies. This year, **the program sent out nearly 200 packages to children and teens affected by cancer who live in the tri-state area**, containing gloves, a fleece blanket, scarves, hats and a donation of socks by BOMBAS. In addition, we were able to resume our CancerCare for Kids Holiday Gift Card Program. **More than 100 kids and teenagers received gift cards for the holidays!**

We would like to extend thanks to Phi Beta Kappa New York Association (PBKNY), the Diana Napoli Fund and CancerCare's Senior Director of Education and Training, Carolyn Messner, for making this program possible, as well as our social workers for getting families involved.



## CANCER SCREENING

### TIME TO SCREEN

CancerCare and Community Oncology Alliance partnered with two-time Grammy award winner and "Godmother of Soul" Patti LaBelle to encourage adults not to delay potentially lifesaving cancer screenings. After millions of people delayed care due to the COVID-19 pandemic, LaBelle and the two non-profit organizations launched the Time to Screen campaign to provide assistance and educational resources to consumers, **including a toll-free hotline at 1-855-53-SCREEN (1-855-537-2733) and website ([www.TimeToScreen.org](http://www.TimeToScreen.org))** featuring information on the importance of screening and support for finding local screening options.





### HEALING HEARTS

CancerCare's Healing Hearts Family Bereavement Camp is an annual highlight for clients, their families and staff. This summer, CancerCare hosted its 13th Annual Healing Hearts Family Bereavement Camp, a free retreat for families and children coping with the loss of a loved one to cancer. For this year's camp, which was heart-themed, families spent the weekend at Memorytown USA in Mount Pocono, Pennsylvania, participating in activities, including creating heart collages and remembrance mandalas to share memories of their loved ones, song writing, dance and fishing.



### MY CANCER CIRCLE

My Cancer Circle is a simple, customizable online tool that helps organize a community of people who want to lend a hand to a person living with cancer or their caregivers. Users can invite friends and neighbors to a private community, request help with specific tasks, send reminders and share important updates. This platform offers an easy way for caregivers and people living with cancer to manage their day-to-day care and stay in touch with their loved ones. **My Cancer Circle has helped thousands of users since 2013, with 25,430 users participating in 2,042 active caregiver communities** this year alone.



### WIG/PROSTHESIS CLINIC

CancerCare's Wig Clinic and Breast prosthesis Clinic aim to empower women-identifying individuals diagnosed with cancer to look and feel their best during treatment and beyond. CancerCare's Wig Clinic is an opportunity for women who are receiving chemotherapy to receive a free wig with assistance from a professional wig fitter. CancerCare's Breast Prosthesis Clinic gives women who have had a mastectomy due to breast cancer treatment the opportunity to receive free mastectomy supplies and try on mastectomy bras and breast prostheses with assistance from a trained fitter. Through our virtual appointments, **we distributed 428 wigs and prostheses to clients affected by cancer.**





## OUR IMPACT | COMMUNITY PROGRAMS

*CancerCare continues to support our community with a blend of educational and social workshops. Educational topics include fertility preservation, dating and relationships, post-treatment survivorship, nutrition, exercise and workplace-related issues. Oncology social workers also hosted virtual events to help clients connect with other young adults affected by cancer through yoga, Pilates, trivia and more.*

### REIKI

This March marked CancerCare's 20-year Reiki milestone. **Since 2002, Reiki Master Linda Gnat-Mullin has offered free monthly Reiki workshops to the CancerCare community.**

Meeting one Wednesday a month, from 12:30 – 2 p.m., CancerCare's Reiki workshops are open to everyone. Reiki is a gentle energy treatment that balances the body and leaves many participants feeling more connected. Each workshop (conducted over Zoom) offers Reiki, features a wellness topic and allows for attendees to meet and connect with each other.

### LEGAL CLINIC

CancerCare and LegalHealth, a division of the New York Legal Assistance Group (NYLAG), continue to provide free legal clinics for New York City clients. This initiative, funded in part by AbbVie Pharmaceuticals, provides assistance for those living with cancer, caregivers and the bereaved who are facing cancer-related legal concerns.

### YPC SCHOLARSHIPS

For the third award cycle, CancerCare's Young Professionals Committee (YPC) Scholarship Program awarded one-time \$2,500 scholarships to young adult students enrolled in a 4- or 6-year undergraduate accredited college in the U.S. or to high school seniors applying to college who have lost a parent or guardian to cancer. **Since its inception, the committee has awarded a total of \$23,000 in scholarships.** Congratulations to the recipients! CancerCare is excited to continue to grow the scholarship program and continue to make a positive difference for young adults impacted by cancer.







## COPING CIRCLE WORKSHOPS

This year, CancerCare began hosting Coping Circle workshops, national virtual workshops for those affected by cancer. Facilitated by master's-prepared oncology social workers, these programs educate people living with cancer and their caregivers and offer guidance for ways to better cope with a cancer diagnosis. Workshops included:

### Purpose in Planning



CancerCare partnered with Triage Cancer and Eisai Inc. to develop Magnolia Purpose in Planning, a legal and financial initiative designed to provide the cancer community with a library of helpful information to get organized, plan ahead, and complete needed estate planning and medical decision-making documents.

### Fostering Resiliency



Available in English and Spanish for patients and caregivers, covered topics such as cancer resources and tools, communicating with your medical team and ways to foster positive emotions during a cancer diagnosis.

### Mindful Moments



Monthly program for caregivers which focused on their own self-care practices, including journaling, guided imagery, progressive muscle relaxation and meditation.

### Ways to Wellness



Covered a range of topics including low impact fitness, nutrition and art therapy.

### Biomarkers 101



Provided a comprehensive, easy-to-access educational discussion that people with cancer and their loved ones can turn to for information on the role of biomarkers in the diagnosis and treatment of cancer.

### AYA Cancer Chronicles



In partnership with Stupid Cancer, CancerCare offered an Adolescent & Young Adult (AYA) Cancer Chronicles workshop series for AYA patients and loved ones coping with cancer, including topics such as coping with cancer, the caregiver experience, dating and disclosure, survivorship and living with metastatic disease.



### YOUNG ADULT PROGRAM

The Young Adult Program provides direct services to young adults affected by cancer, between the ages of 18-40. Through a supportive environment, this program strives to identify the stressors affecting this population and delivers supportive services in order to empower each individual in their experience through education, advocacy and psychosocial support services.

### CAREGIVER PROGRAM

CancerCare provides free, professional support services for caregivers and loved ones, as well as caregiving information and additional resources, including support groups, Connect Education Workshops, podcasts and publications for individuals caring for loved ones impacted by cancer. The Caregiver Program provides space and fosters a community for caregivers to process their many feelings and thoughts while connecting with others in similar situations.

### PEN PAL PROGRAM

CancerCare, in partnership with Caring About Seniors, continues its Pen Pal Program connecting older adults with volunteer letter-writers. This program reduces feelings of isolation by building connections across distance and across generations.

### CANCER OUT LOUD: THE CANCERCARE PODCAST

Cancer Out Loud: The CancerCare Podcast features conversations with people living with cancer, caregivers, post-treatment survivors, loved ones and the bereaved. The podcast was developed by social workers and is produced and hosted by social work staff, running two seasons each year in the spring and fall. Each episode sheds light on what it's really like to be part of a support group, maintain a career during treatment, cope with grief and much more. **In fiscal year 2022, we released 15 full-length episodes**, covering a wide range of topics, from the importance of cancer screenings, to advocating for oneself and others in the face of health care disparities, to taking care of your mental health while being affected by cancer.

Cancer Care Inc.,

I received the check for \$100.  
Thank you so very much. I am  
very appreciative for any help I  
receive. Thankful to God for every  
day I have.

may God bless you all.

Sincerely, Alice

Thank you so much for the  
incredible opportunity to participate  
in the Healing Hearts camp. Molly +  
I were blown away by the  
caring + supportive environment  
and truly enjoyed being able to  
create bonds with people in  
similar circumstances. The facilities  
were wonderful, the activities were  
thoughtful and well-planned, but  
none of this could have been  
accomplished without a dedicated  
staff. Thank you from the bottom  
of our hearts!

Love,  
Mike + Molly

I just wanted to  
send a quick note  
to express my  
heartfelt gratitude  
and say thank you  
for your support and  
assistance.

It was greatly  
appreciated.

Sincerely,

Mary H

Dear Cancer Care Team

Thank you so much for  
your very generous gift. This  
has been one of the most  
challenging times in my life &  
your support has lessened  
some of the stresses. It is  
nice to know that  
there are people out  
there who care.

God bless you.  
hiz



**ADVOCACY &  
PUBLIC POLICY**



# THE EMPLOYERS' PRESCRIPTION FOR EMPLOYEE PROTECTION TOOLKIT: BEST PRACTICES FOR PRESCRIPTION DRUG BENEFIT DESIGN

In March 2022, CancerCare released “The Employers’ Prescription for Employee Protection Toolkit: Best Practices for Prescription Drug Benefit Design,” to help benefits managers, human resources professionals and executives better understand and navigate the unintended consequences of utilization management (UM).

UM, which helps health insurance providers contain costs, weed out unproven treatments and evaluate physicians’ treatment recommendations, can negatively impact patient outcomes, especially for those with serious or chronic illnesses. Administrative snarls, delays, stress and costly out-of-pocket expenses for people diagnosed with life-threatening conditions are among the frequent challenges presented by UM.

CancerCare’s new educational resource explores the burdens and obstacles of common UM practices and offers recommendations to help employers and benefits managers create a strong, patient-focused prescription coverage plan that can reduce long-term costs and contribute to higher employee productivity and satisfaction. The toolkit includes a comprehensive explanation of how UM can impact access to pharmacy benefits and includes illustrated fact sheets about common UM practices and their potential impacts. It also includes a video series featuring real patients describing the day-to-day consequences of their insurance plan’s UM policies.

**The toolkit is available free for employers and the public and can be found at [www.betterrxbenefits.org](http://www.betterrxbenefits.org).**



## LONG ISLAND OFFICE

In May 2022, CancerCare opened its newest office, located in Deer Park, Long Island. This location allows for more direct services to Long Islanders through in-person counseling and other community programs. With support from generous partners, including United Way of Long Island, CancerCare continues to foster its local support and partnerships on Long Island.



## PATRICIA GOLDSMITH NAMED TO FORBES 50 OVER 50 VISION LIST

CancerCare CEO Patricia J. Goldsmith was recognized as part of the Forbes 50 Over 50 Vision List. Established in partnership with Mika Brzezinski's "Know Your Value," the Forbes "50 Over 50" platform highlights women over the age of 50 who have achieved significant success. Goldsmith was nominated based on her contributions to the health care field as CEO of CancerCare and her long history of cancer advocacy, having previously held executive roles at the National Comprehensive Cancer Network and the H. Lee Moffitt Cancer Center & Research Institute.

**Forbes**

## CHRISTINE VERINI RECOGNIZED BY CANCER HEALTH MAGAZINE

Christine Verini was named by Cancer Health Magazine as being one of their top 25 remarkable individuals who are helping to improve the lives of those touched by cancer. The Cancer Health 25 is an annual list that honors individuals who have made a difference in the lives of people with cancer, with this year's theme being Quality of Life.

**Cancer  
Health**

INDIVIDUAL

# Finding Meaning



DAVID KESSLER

BREITBAIT • POPPITO

INDIVIDUAL MEANING-CENTERED PSYCHOTHERAPY FOR PATIENTS WITH ADVANCED CANCER

OXFORD

CHRIST  
•  
MESSNER  
•  
BEHAR

## HANDBOOK OF ONCOLOGY SOCIAL WORK

OXFORD



# WORKING TOGETHER TO SPREAD HELP & HOPE

*We are proud to collaborate with various partners whose values align with our mission to support anyone affected by cancer.*



## ALIVE WE'RE EMPOWERED (AWE)

Alive We're Empowered (AWE) is a brand of fine jewelry founded by a three-time cancer survivor and her son. Each piece is crafted to empower its wearer and become a source of everyday inspiration. A portion of proceeds from all orders goes to their charity partners, including CancerCare.



## FRENCH PRESSE

A high-end bedding and lifestyle retail store, French Presse proudly supports CancerCare in its mission to help people manage the impacts of cancer. A portion of sales of the French Presse bedding collection are donated to CancerCare in honor of its founder, Sarah DeHavenon, who passed away in October 2018 after a diagnosis of glioblastoma.



## MAGNOLIA MEALS AT HOME

Magnolia Meals at Home makes nutritious meals free for those living with cancer, helping them focus their energy on treatment and related concerns. **This year, CancerCare provided delicious meals to 329 individual clients.** Sponsored by Eisai, the program is available in areas of Massachusetts, New Hampshire, New Jersey, New York and North Carolina.



## MARY KAY ASH FOUNDATION

The Mary Kay Ash Foundation has supported the Touching Hearts Program for more than 20 years, which helps women cover costs related to cancer treatment, including transportation, home care and child care expenses.



## NEW YORK COMMUNITY TRUST

**The New York Community Trust's generous \$745,000 grant enables CancerCare to assist low-income residents and families in New York City** who are affected by the financial burdens of cancer. The majority of this grant is made possible by the Orland S. and Frances S. Greene Fund, created specifically to help cancer patients in financial need.



# CANCERCARE FUNDRAISERS AND EVENTS



## THE LONGEST DAY OF GOLF

The Longest Day of Golf brings golf enthusiasts together to show off their talents to support CancerCare. This annual golf marathon involves completing as many holes as possible in one full day—with many participants playing 100 holes or more.

## DO SOMETHING FOR CANCERCARE

First held in fall 2020, our Do Something for CancerCare campaign enables supporters to raise vital funds safely and with the freedom to choose their own activity. From virtual performances to raising money per laundry item done, our supporters demonstrated great creativity during the pandemic. The event continued last year, demonstrating that every act of generosity has an impact on our clients and their loved ones.

## CANCERCARE NATIONAL GALA

In April 2022, CancerCare hosted its national gala for the first time in person since the beginning of the pandemic. Held at the Ziegfeld Ballroom in New York City, attendees were entertained by Tony and Grammy Award nominee Jeremy Jordan and the percussion group Industrial Rhythm. Three CancerCare Board of Trustees were honored with the 2022 Help & Hope Award: Christine Converse Hogan, CIO Advisor, Zoom Video Communications Inc.; Marsha Palanci, Founder, Cornerstone Communications; and Susan Smirnoff, past President of the Board and healthcare communications and public relations consultant. **This year's gala raised over \$1,000,000 to help fund CancerCare's free support services.**





## FESTIVAL OF HOPE NEW JERSEY GALA

Held in person at the Park Savoy in Florham Park, **the 34th Festival of Hope Gala raised over \$160,000 to support individuals affected by cancer.** A portion of the funds raised at the event directly support the Healing Hearts Bereavement Camp, a free weekend retreat for families grieving the loss of a loved one. UroGen, a biotech dedicated to developing solutions to treat urothelial and specialty cancers, was honored with the 2022 Corporate Achievement Award, with Liz Barrett, their President and Chief Executive Officer, accepting the award.



## YOUNG PROFESSIONALS COMMITTEE'S COCKTAILS FOR A CAUSE

CancerCare's Young Professionals Committee (YPC) hosted its 5th annual fundraising event, "Cocktails for a Cause," at the Michael Kors Building's Rooftop Garden in New York. Attendees were able to reconnect after the pandemic, enjoy refreshments and bid on raffle prizes, including tickets to the Tonight Show, concerts, Pilates classes and more. Thanks to the attendees and supporters, the YPC exceeded its fundraising goal of raising enough funds for three scholarships.





the *CANCERcare*® corporate  
**CIRCLE OF HOPE**

PREMIER



SUSTAINER



FRIEND



# THANK YOU TO OUR SUPPORTERS

*Thanks to our generous donors, CancerCare raised \$103.1 million to support our programs and services. We would like to especially acknowledge the donors who contributed \$500 or more this year.*

2Seventy

Mr. and Mrs. Michael Abbott

AbbVie Inc.

Mr. and Mrs. Gerald Aksen

Mr. Chad Alarie

Alkermes, Inc.

Allene Reuss Memorial Trust

AllianceRx Walgreens Prime

AmazonSmile Foundation

AMC Networks

American Society of Clinical Oncology

America's Best Local Charities

Amgen, Inc.

Amie's Place Foundation

Mr. Dave Andrus and Mrs. Julie Andrus

Ann and Arthur Grey Foundation

Anonymous

Apollo

Dr. Alan Appelbaum

Mr. Michael Apstein

Arch Capital Group

Ms. Meghan Archibald

Arent Fox LLP

Mr. Vincent Ashton

Association for Value-Based Cancer Care

Astellas

AstraZeneca Pharma

Atlantic Health System

Mr. Christopher Avellaneda

Aveo Oncology

Yamar Ba

Mr. John Badstubner

Bancker Construction Corp.

Bank of America Foundation

Mr. Michael Barasch

Ms. Samantha Barbieri

Ms. Sondra S. Beaulieu

Mr. Robert Beauregard

Beauty 21 Cosmetics

BeiGene

Mr. Elliot Bergman

Ms. Dayle Berke

Mr. Donald Bernstein-Finkel

Mr. James Bigglestone

Yakov Bindler

Blaylock Van, LLC

Blueprint Medicines Corp.

Mr. John Blusonis

Dr. & Mrs. S. Bodenheimer

Boehringer Ingelheim Cares Foundation

Boehringer Ingelheim Pharmaceuticals, Inc.

Mr. John Bombace

Mrs. Audrey A. Boughton

Brian P. Friedman Family Foundation

The Brill-Edwards Family

Bristol-Myers Squibb Company

Tracy Brittain

Mr. Bernard Brodsky and Mrs. Selma Brodsky

Brookfield

Ms. Carla Brooks

Ms. Joan Brower

Mrs. Roxanne Brown

Mr. Michael Broxmeyer

Bradley Bunn

Mr. & Mrs. Allen M. Burns

Mr. Scott Campbell

Mr. Stuart B. Campbell

CancerCare (NY Anonymous Gifts)

Carbiener Family Charitable Fund

Mr. and Mrs. James P. Carle

Mrs. Maryann T. Carlino

Mr. Robert Castillo

Castle Hill Recycling/Allcity Recycling

Mrs. Veronica Catanese-Slater

Deborah A. Sacks Chapin

Ms. Nancy Chapman

Charles & Mildred Schnurmacher Foundation, Inc.

Mr. Peter Chieco

Amy R. Churgin

Mr. Mark Claxton

Mr. and Mrs. Herbert Cohen

Mr. Ronald Cohen

Collection XIX, Ltd.

Community Oncology Alliance

Community Thrift Shop, Inc.

Cooperman Barnabas Medical Center

Mr. Stephen Corman

Ms. Teresa Cronin

CTI BioPharma

Mr. Michael J. Czerniawski

Ms. Carol Dachs

Mr. and Mrs. Robert D'Addario III

Daiichi Sankyo, Inc.



Kunal Dalal	Estate of Norma Linder	Ms. Rena K. Goins
Ms. Jessica L. Daley	Mr. and Mrs. John N. Evans	David Goldberg
Dallas Travers	Exelixis, Inc.	Golden State Medical Supply, Inc.
Mrs. Darcy Dalton	Mr. John F. Facilla	Ms. Patricia J. Goldsmith
Ms. Nancy Damelin	Mr. Michael J. Farrell	Google
Mrs. Norma T. Dana	Federated Hermes, Inc.	Ms. Julie V. Goosman
Dr. Steven Danatos	Mitchell Feldman	Mr. Mark Gorman
Debbie's Dream Foundation Inc.	Mr. Christopher Ferreira and Mrs. Michele Ferreira	Gotham Ready Mix, LLC
Mr. Andrew P. Decarlo	Sharon Telesca Feurer	Dr. Jody Gould
Mr. and Mrs. Donn and Joyce Delson	Field Hall Foundation	Grace W. and Horace D. Bregenzer Fund
Mr. Jeffrey Diamond	Mr. Stephen M. Fields Esq	Ms. Caroline Greber
Amadou Diarra	Mrs. Renata Figueiredo	Mrs. Diane Greenwald
Mrs. Margaret Diaz-Cruz	Mr. Chris Finnegan	Mr. and Mrs. Michael H. Grey
Erin Dichiera	Mr. Gregg Fisher	Ms. Barbara Grocki
Mrs. Eva DiMichael	Mr. and Mrs. Scott W. Fisher	Mr. and Mrs. Dan S. Grossman
Mr. Dmitry Dinces	Ms. Jean D. Fitzgerald	Grusky Schardt Family Trust
Mr. Kevin Dinnie	Ms. Lynn L. Flanagan	Mr. and Mrs. Peter Gummeson
Ms. Deborah Doherty	Alan Fortich	Gunnar and Lillian Nicholson Foundation Trust
Catherine Donnelly	Foundation Medicine, Inc.	Hagedorn Fund
Dorothy and David Schachne Charitable Fund	Mr. Thomas Fountaine	Hallen Welding Service
Mr. Tim Dougherty	Willie M. Francis	Ms. Heidi Halpern
Mr. Christopher Douglas	Franz W. Sichel Foundation	Mr. Matthew Halprin
Mr. & Mrs. Leo and Doris Dreyfuss	French Presse Linens LLC	Mr. and Ms. Michael A. Hamilton
Mr. and Mrs. David Duleba	Mr. and Mrs. Paul M. Friedman	Harborside Press, LLC
Mr. John Durante	Robert A. Friedman	Mr. and Mrs. Laurie and Maury Harris
Ms. Regina Durazzo	Julian Friedman, Esq.	Ms. Wendy Hashmall
Mr. and Mrs. Robert and Joan Easton	Frontstream (formerly Truist)	Jan Hazard
Dr. and Mrs. Colin S. Edwards	Mrs. Eliane Garcez	Healthy Women
Eisai Inc.	Mr. and Mrs. George Garfunkel	Ms. Lisa Hefner
Eli Lilly and Company	Ms. Lila Gault and Mr. Bill Arp	Ms. Sheena Heilbrun
Mr. Martin Elias	Mr. and Mrs. Steven Geismar	Helen Hoffritz Charitable Trust
EMD Serono, Inc.	Mr. Robert W. Gelfman	Mrs. Joyce Heller
Englewood Hospital and Medical Center	Genentech, Inc.	Ms. Amy Henry
Epizyme	Genmab US Inc	Ms. Karen L. Hibbert
Ms. Mindy Erlichman	Gertrude L. Hirsch Charitable Trust	Mr. and Mrs. Paul G. Himmelright
Estate of Antoinette Lotito	Mr. Louis A. Giangrasso	Mr. Dan Hines
Estate of Ellen A. Morrone	Mr. Malcolm Gideon	Hirsch Family Charitable Fund
Estate of Estelle Huston (Schaller)	Gilead Sciences, Inc.	Hirshberg Foundation for Pancreatic Cancer Research
Estate of Kenneth G. Burns and Earlene A. Burns	Mr. Morton L. Ginsberg	Marcia Hochberg
Family Trust	Mr. and Mrs. Daniel Glatter	Mr. and Mrs. Paul Hogan
Estate of Laura Lowy Hammerman	GlaxoSmithKline	Hologic, Inc.
Estate of Leah Silverman	Glen Ridge High School	Mr. Joseph Holtzman
Estate of Lily Forrow	Gloria Cielavin Revocable Trust	

Ms. Eunice E. Hong  
 Horizon Foundation for New Jersey  
 Mr. and Mrs. Craig M. Horowitz  
 Hortley G. LeBlang Charitable Foundation  
 Ms. Rita L. Houlihan  
 Ms. Kay Hsu  
 Hunters Point Recycling Inc.  
 Huntsworth Health Corporation  
 Huntsworth Health North America LLC  
 Illumina, Inc.  
 Mr. Phil Imperial and Mrs. Veronique Imperial  
 Ion Bank Foundation, Inc.  
 Mr. Robert M. Irvine  
 Irving and Phyllis Millstein Foundation  
 Irving Rubenstein Trust  
 Mr. and Mrs. Brad C. Irwin  
 Mr. and Mrs. Alan L. Jacobs  
 Ms. Melissa C. Jaehnig  
 Janssen Services LLC  
 Jazz Pharmaceuticals  
 Jean Paul Cormand Living Trust  
 Mrs. Lisa Jeffries  
 Ms. Patricia F. Jewell  
 Mr. Albert Jicha  
 Johnson & Johnson Matching Gift  
 Parker Johnson  
 Ms. Candace Jones  
 Ms. Michele Jones  
 Ms. Patricia H. Jones  
 Mr. Ben Judd  
 Jules and Evelyn Jacobsen Charitable Trust  
 Ms. Barbara Julius  
 Carol F. Kaimowitz  
 Ms. Robin Kalmanson  
 Ms. Nina Kaminer  
 Mr. and Mrs. Daniel and Susan Kane  
 Ms. Andrea L. Kavalier  
 Noelle Keane  
 Mr. John W. Keating  
 Ms. Valerie V. Kelleher  
 Mrs. Kathleen Kennerley  
 Dr. Pervez Ali Khan

Mr. Jeff Kiley  
 Ms. Lisa Kimbro and Mr. Ray Lynch  
 Mr. and Mrs. Justin M. King  
 Mrs. and Mr. Susanne Kirkpatrick  
 Mr. Stephen Kirwan  
 Ms. Rachel Klein  
 Mr. and Mrs. Douglas M. Klock  
 Yitzchak Kopel  
 Dr. and Mrs. Neil and Diane Korman  
 Mr. Michael Korn  
 Beata Korytowsky  
 Mr. and Mrs. David R. Kott, Esq.  
 KPMG LLP  
 Krakow Family Fund  
 Mr. Alton Kremer  
 Mr. Joel Kurtzberg  
 L H Brenner Inc.  
 Ms. Marsha Lake  
 Gregg Lanez  
 Mr. Michael S. H. Lario  
 Mrs. Pauline Lascano  
 Ms. Victoria Lasseter  
 Ms. Allison Lau  
 Mr. and Mrs. Mark Lauber  
 Laurie Kayden Foundation  
 Mr. and Mrs. Todd D. Lavieri  
 Mrs. Nancy Lee  
 Leo Oppenheimer and Flora Oppenheimer Haas  
 Foundation  
 Mr. and Mrs. David and Donna Lester  
 Ms. Sylvia Lester  
 Dr. Laurie Letvak  
 Mr. Jeffrey Levine  
 Dr. J L. Lichtenfeld  
 Nicole Lindsay  
 Ms. Linda Livermore  
 LKV Family Charitable Fund  
 Llewellyn Burchell Charitable  
 Lodi PBA Local 26 Civic Association, Inc.  
 Lovejoy Furman Charitable Gift Fund  
 Lubcher & Ganis, LLP  
 Humanity

LUNgevity Foundation  
 Ms. Elizabeth M. Lutas  
 Phillina Lyles  
 Mr. and Mrs. Michael P. Lynch  
 Mr. Thomas R. Lynch  
 Ms. Julie Lynwander  
 Mr. Stewart Macaulay  
 Ms. Barbara B. Manning  
 Ms. Dorothy Marks  
 Mr. James C Marnach and Mrs. Phillis J. Marnach  
 Marsh & McLennan Agency  
 Mary Delahanty Clapham Charitable Trust  
 Mary Kay Charitable Foundation  
 Mastercard International Inc.  
 Max & Victoria Dreyfus Foundation  
 Musa and Tom Mayer  
 Ricky McGhee  
 Ms. Elizabeth E. McGhee-Narey  
 Mr. Mark McGreevy  
 Ms. Beatrice McHale  
 Mr. William J McKee, Jr  
 McKinsey  
 Mr. Richard Mead  
 Ms. Jyoti Menon  
 Merck & Co., Inc.  
 Catherine Mercurio  
 Ms. Lynn Merrilees  
 Mr. Salvatore Messina  
 Dr. Carolyn Messner, DSW, BCD, FAPOS, FAOSW  
 Metzger-Price Fund, Inc.  
 Michael J. Czechowski Living Trust  
 Microsoft Matching Gifts Program  
 Brandon Miller  
 Mr. and Mrs. Brian J. and Heidi Miller  
 Daniel Miller  
 Mr. and Mrs. Steven P. Miller  
 Ms. Stephanie Milner  
 Mr. Adam Mirabella  
 Mirati Therapeutics  
 Mr. and Mrs. Samuel L. Molinaro  
 Monica A. Schaffer & Robert G. Yolles  
 Philanthropic Fund

Suzanne Morel	Sonia Patel	Mr. Dennis P. Ringel
Ms. Esther Moreno	Patricia A. O'Callaghan Animal Care Foundation	Mr. Conor Roach
Mr. Carlton A. Morrison	PayPal Giving Fund	Ms. Mizchelle Roan
Ms. Ellen A. Morrone	Mr. and Mrs. James Pellizzi	Robert A. Mills Foundation
Mr. Michael R. Morrone	Mr. and Mrs. Bill Pelster	Robert Wood Johnson Foundation
Mr. and Mrs. Raymond J. Moseman	Mr. and Mrs. Robert & Janet Perro	Shannon Rocks
Mary K. Moseman	Mr. Mark Peters	Mr. Carlos T. Rodriguez-Pastor
Ms. Judith Mossholder	Pfizer Foundation Matching Gifts	Mr. Ed Rogowski
Ms. Constance Mrak	Pfizer Inc	Mr. Jeffrey Rosenblueth
Mr. Joseph Mulligan	Phantom Carting Inc.	Mr. David Rosenbluth
Mr. Michael Mutino	Pharmaceutical Research and Manufacturers of America	Ms. Joan Ross
Naomi K. Raber 2020 Charitable Lead Annuity Trust 1	Pharmacyclics, Inc.	Mr. Franklin Rudolph
New York Boom Trucks, Inc.	Ms. Claudia M. Phillips	Pamela Russo
NNN Properties, LLC	PhRMA	Norman K. Sackar
Mr. and Mrs. Michael C. Nolan	Mr. and Mrs. Travis Pillars	Diego Sacristan
Mr. James M. Norris and Mrs. Dinae Norris	Pink Aid	Mrs. Munir Saltoun
Mr. Paul J. Norris	Mr. Andrew C. Pizzo	Andrea Sandefur
Northern New Jersey Community Foundation	Mr. Joseph Platt	Sanofi Genzyme
Notified	Mr. Justin Plouffe	Sarah K. de Coizart Perpetual Charitable Trust
Novartis Pharmaceuticals Corporation	Mr. Christopher Polanco	Satty, Levine & Ciacco, CPAs, P.C.
Novocure	Mr. Paul Posoli	Ms. Florence Savage
Kevin O'Brien	PricewaterhouseCoopers LLP	Dorothy Schachne
Mr. Michael O'Brien	PRIME Education LLC	Mrs. Arleen Schefflein
Mr. Joseph O'Connor	Procyon Partners	Mr. Robert L. Schmerker
Adesumbo Odunlami	Jane Prokop	Mr. and Mrs. Leonard Schuchman
Ms. Karen Olah	Provident Bank Foundation	SchwartzEastonFishbein Giving Fund
Ms. Cande Olsen	Prudential Financial (Benevity)	Mr. and Mrs. Jerome Schwartz
Marta Olszak	Ms. Susan Puzo	Mr. and Mrs. Charles Scicolone
Onco360	Ms. Mary K. Quirk	Ms. Fatima Scipione
Mr. Thomas M. O'Neill	Ms. Patricia E. Raber and Mr. Kenneth Max	Seattle Genetics (Seagan)
Mr. Gordy Opitz and Mrs. Linda Opitz	Dr. Sarah Ramer	Ms. Harriet Sepinwall
Mr. George Orefici	Mr. Edward M. Rappaport	Mr. and Mrs. William R. Serpe
Ms. and Mrs. Janet Orsini	Brandi Ray	Servier Pharmaceuticals
Ms. Sarai Ortiz	Mr. William R. Reader	Mr. Harvey Shapiro
Our Lady of Mercy Academy	ReciteMe	Mr. Samuel H. Shapiro
Mr. Peter Pace	Recreation Farm Society, Inc	Sherry and Bruce Frankel Charitable Fund
Ms. Marsha J. Palanci	Regeneron Pharmaceuticals, Inc.	Mr. Robert Short
Mr. and Mrs. Michael Parisi	Mr. Marc Reiner	Mr. Jonathan O. Sills
Mrs. and Mr. Barbara Parmese	Tara Reminick	Mr. Andrew A. Silver and Mrs. Merrill I. Silver
Angelika Paskins	Ms. Robin C. Resnick	Dr. Sandra S. Silverberg
Chandni Patel	Responsible Recycling Charitable Foundation	Silverman Foundation
		Heidi and Rob Silverstone

Simons Foundation  
 Mr. Amiel Singer  
 Ms. Ada Sklyarsky  
 Ms. Susan Smirnoff  
 Mr. Chuck W. Snyder  
 Matthew Snyder  
 Mr. Steve Snyder  
 Ms. Denise R. Sobel  
 Mrs. Ellen Miller Sonet  
 Mrs. Toni Sonet  
 Mr. Nils R. R. Sorensen  
 Ms. Jessica Spahn  
 Nitsana Spigland, M.D and Peter H. Kudler, M.D  
 St. Raphael Orthodox Church  
 Mr. Mark Stadler  
 Mr. John A. Staley IV  
 Mr. Tim Stanard  
 Mr. Jeffrey Stedman  
 Mr. and Mrs. Robert L. Steiger  
 Hillary Stemple  
 Steppacher Family Charitable Fund  
 Mr. Walter M. Steppacher IV  
 Mr. Paul Steppacher  
 Steve and Lenore Newman Family Foundation  
 Mr. Robert G. Stevens  
 Mr. Martin Sticht  
 Ms. Vera Strauss  
 Ms. Marcia Strean  
 Ms. Dawn Marie Stull  
 Ms. Vera Sullivan  
 Kerrin A. Summa  
 Mr. Peter Sundheim  
 Ms. Iris Sutz  
 Suzanne A. Livornese Revocable Trust  
 Mr. John K. Sweeney  
 Mr. Mark Taccetta  
 Taiho Oncology, Inc.  
 Takeda Oncology  
 Ms. Hogla Texidor  
 The Assistance Fund  
 The Boeing Company  
 The Brain Tumor Foundation

The Campbell Family Foundation  
 The David and Alan Greene Family Foundation  
 The Don and Marilyn Hayden Family Foundation  
 The Duffy Family Fund at Schwab Charitable  
 The Edith M. Schweckendieck Trusts  
 The Estate of Marie Arif  
 The Fay J. Lindner Foundation  
 The Feuerring Foundation  
 The Gerbino Family Foundation  
 The Gettinger Family Foundation  
 The Irving R and Naomi K Raber Family Foundation  
 The Janice and Victor Romley Charitable Fund  
 The Joan McKay Charitable Fund  
 The Kantor Foundation, Inc.  
 The Lillian Schenck Foundation  
 The Matays Law Group PLLC  
 The Medtronic Foundation  
 The New York Community Trust  
 The Philip J & Carol J Lyons Foundation  
 The Peter & Jeri Dejana Foundation  
 The Reuben & Jane Leibowitz Foundation  
 The San Diego Foundation  
 The Shore Spot Inc.  
 The Sidney, Milton and Leoma Simon Foundation  
 The Stanley & Kathleen Grumbacher Foundation Inc  
 The Valley Hospital  
 The William & Eleanor Greenblatt Foundation  
 The Zeppo and Daisy Memorial Fund  
 Mr. Myron E. Theilmeier  
 Ms. Amanda Thomas  
 Mr. Jerry Thompkins  
 Kate Tighe  
 Mr. Nicholas Timchalk  
 Transit Mix Corp.  
 Triple Negative Breast Cancer Foundation  
 Ms. Remi Tseng  
 Mr. Robert S. Tulloch  
 Turning Point Therapeutics  
 United Pavement Marking Industries, Inc.  
 United Way of Long Island  
 UnitedHealth Group

UroGen Pharma Ltd  
 Mrs. Roberta S. Ursaner  
 Ursula Wybraniec Fund  
 Mrs. Joanne M. Vanak, BSN  
 Brandi VanderMolen  
 Varian Medical Systems  
 Veracity Science  
 Ms. Christine Verini  
 VF Imagewear Inc. Charitable Funds  
 Viacom International, Inc.  
 Ms. Samantha Viglienghi  
 Mr. Alan Vinegrad  
 Thomas Vitello  
 Mrs. Sophia Volandes and Mr. Peter Volandes  
 Mr. Russell Wachtler  
 James Wallace  
 Lisa Walsh  
 Mr. Daniel Ware  
 Mr. and Mrs. Andrew Weinberger  
 Mr. and Mrs. Neal R. Weiner  
 Ms. Yvonne Weissenstein  
 WellCare of New Jersey  
 Mr. Mark Welles  
 Wells Fargo  
 Ms. Kristin T. Westfall  
 WideOrbit  
 Dr. and Mrs. Michael D. Widlitz  
 Wiles Charitable Gift Fund  
 Willets Point Asphalt Corp  
 William C. and Joyce C. O'Neil Charitable Trust  
 William J. Burns Foundation, Inc.  
 Mr. and Mrs. Mark S. Wintner  
 Mr. Tom Woods and Mrs. Rosetta Woods  
 Joann Wray  
 Yardi Systems, Inc.  
 Mr. Jon Yozzo  
 Mr. Kirk Zachary  
 Mrs. Barbara Zaret  
 Mr. Burt Zweigenhaft

# CANCERCARE'S BOARDS & BOARD MEMBERS

## CancerCare Board of Trustees

### **Michael Parisi, Board President**

*Chief Executive Officer,  
Lumanity*

### **Andrew C. Pizzo, Board Executive Vice President**

*Owner & President, Collection XIIX, Ltd.*

### **Susan Smirnoff, Board Secretary**

*Healthcare Communications &  
Public Relations Consultant*

### **Loretta Moseman, Board Treasurer**

### **Janet Dewart Bell**

### **Margaret R. Diaz-Cruz, LMSW**

### **John N. Evans, CPA**

### **Stephen M. Fields**

*Private Equity Lawyer*

### **Flavio Figueiredo**

*Global Head of Corporate FX Sales  
CitiGroup Centre*

### **Renata Esper Figueiredo**

### **Paul M. Friedman**

### **Christine Converse Hogan**

*CIO Advisor*

### **Patti Fine Jewell**

*Senior Director, Patient Advocacy,  
Pfizer Inc.*

### **Kris Johnson**

*Executive Assistant, Mary Kay, Inc.*

### **John W. Keating**

*Corporate Vice President, Genmab, Inc.*

### **Alton B. Kremer, MD, PhD**

### **J. Leonard Lichtenfeld, MD, MACP**

### **Michael R. Morrone**

*Director of Corporate Tax  
Horizon Healthcare Services, Inc.  
Horizon Blue Cross Blue Shield of NJ*

### **Marsha J. Palanci**

*Retired, Cornerstone  
Communications Ltd.*

### **William C. Pelster**

### **Dorothy Schachne**

### **Harvey Shapiro**

*Managing Partner  
Sargoy Stein*

### **Wayne Sichel, RPH, JD**

*Retired, Head of U.S. Federal Policy,  
Bristol Myers Squibb*

### **Walter (Chip) Steppacher**

### **Joanne M. Vanak, MSN, BSN**

### **Craig Vosburg**

*Chief Product Officer, Mastercard*



# CANCERCARE'S BOARDS & BOARD MEMBERS

## CancerCare of Port Washington

**Tim Lavelle, President**

**Renee Gennarelli, Executive Vice President**

**Theresa Hornberger, Treasurer**

**Tina Revelant, Fundraising and Technology Vice President**

**Barbara Faticone, Membership Vice President**

**Jennifer Scotto Robinson, Membership Vice President**

**Susan Bishop Copeland, Recording Secretary**

**Rita DiLucia, Dues Secretary**

**Maria Augustino, Social Secretary and Memorials**

**Joanne Rowland, Corresponding Secretary**

**Patty Atkins, Publicity/Social Media**

**Karen DeLillo, Historian**

**Lisa Idol, Social Services**

**Richard Atkins, Nominating Committee Lead**

**Ann Daum, Trustee**

**Beth Useloff, Trustee**

### **Nominating Committee:**

Rich Atkins

Sue Bishop Copeland

Paul Relevant

Judy Doyle

Geri DeJohn

### **Fundraising Committee:**

Tina Relevant (Fundraising VP)

Nancy Morandi

Susan Bishop Copeland

### **Membership Committee:**

Barbara Faticone (Membership VP)

Jennifer Scotto-Robinson (Membership VP)

Rita DeLucia

Karen DeLillo

### **Trustees:**

Anne Chiapella

Lena Mazzilli

Ann Daum

Bobby Garofalo

### **Active Honorary Trustees:**

Carole Corbo

Barbara Faticone

Vilma Jones

Tina Revelant

# CANCERCARE'S BOARDS & BOARD MEMBERS

## CancerCare Young Professionals Committee

**Alice Badamo**

*Bristol Myers Squibb*

**John Badstubner**

*SalesForce*

**Shakirat Brown**

*IQIVA*

**Amandi Clarke**

*Planned Parenthood  
Federation of America*

**Olivia Colson**

*Snarkitecture*

**Max Damashek**

*Uber*

**Todd Feiler**

*RubiconMD*

**Andrew Gilmore**

*Capital One*

**Lauren Griggs**

*Bristol Myers Squibb*

**Lesley Kamnitzer**

*Savills Studley*

**Allison Lau**

*Refreshments, BFA Industries*

**Alexander Lavecchia**

*Peter Marino Architect*

**Jordan Littlejohn**

*NBCUniversal*

**Cynthia Luu**

*Okta*

**Christine Megalla**

*Lumanity*

**Marc Morales**

*The Center for NYC  
Neighborhoods*

**Swati Patel**

*Consultant*

**Samantha Sayers**

*Amazon*

**Megan Whitman**

*Young Survival Coalition*

**Anne Wymard**

*Point72 Asset Management*

# CANCERCARE FINANCIAL SUMMARY

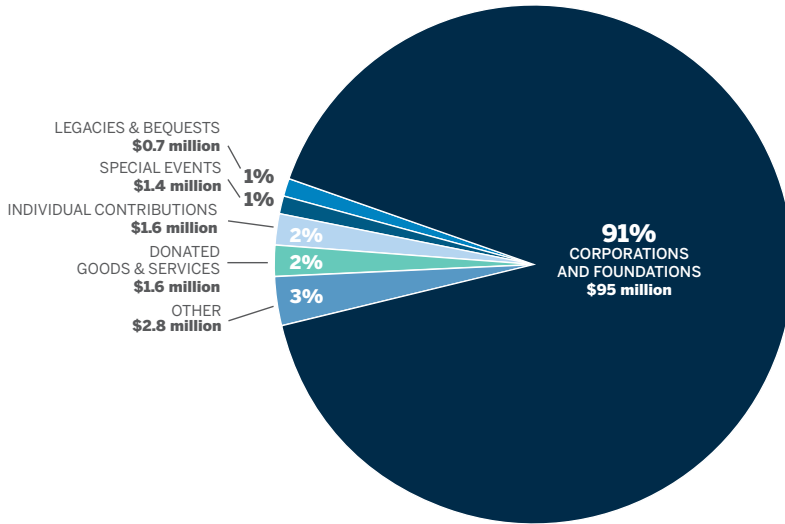
Founded in 1944, CancerCare is the leading national organization providing free, professional support services and information to help people manage the emotional, practical and financial challenges of cancer. Our comprehensive services include resource navigation, counseling and support groups over the phone, online and in-person, educational workshops, publications and financial and co-payment assistance. All CancerCare services are provided by master's-prepared oncology social workers and world-leading cancer experts.

To learn more, visit [www.cancercare.org](http://www.cancercare.org) or call **800-813-HOPE (4673)**.

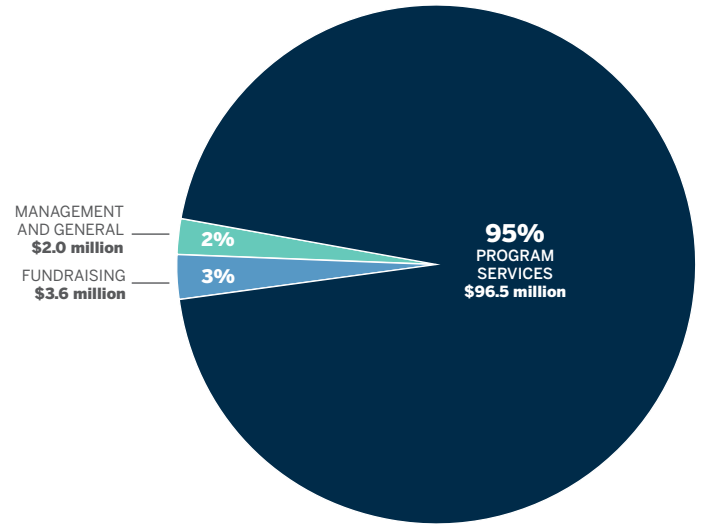
- CancerCare provided **171,885 services** to people affected by cancer, serving clients with **90 different types** of cancer in all **50 states**.
- Our oncology social workers answered **38,841 calls** to our Hopeline.
- Our staff provided **31,569 hours of emotional and practical support** through our Hopeline, individual counseling, support groups, community programs and more.
- CancerCare provided **\$81 million** in financial and co-payment assistance to **28,664 people** for costs including transportation, practical needs and to help pay for cancer medications.
- CancerCare welcomed **1.8 million visits** to our websites, and users completed **60,596 searches** in our Online Helping Hand to find practical and financial assistance.
- We distributed **957,511 print and digital publications** to people living with cancer, caregivers, loved ones and health care professionals.
- Leading experts in oncology led **80 CancerCare Connect® Education Workshops**, from **144 faculty members** and **97 partner organizations**, drawing **44,043 participants**.
- The Pet Assistance & Wellness (PAW) Program helped **463 clients** keep their pet in the home.
- My Cancer Circle™ served **25,430 users** in **2,042 caregiver communities**.

The information presented herein reflects the consolidated financial statements for CancerCare, as of and for the year ended June 30, 2022. A copy of CancerCare's latest financial report may be obtained online at: [www.cancercare.org/about/financials](http://www.cancercare.org/about/financials), or by writing to: New York State Department of Law, Charities Bureau, 120 Broadway, New York, NY 10006.

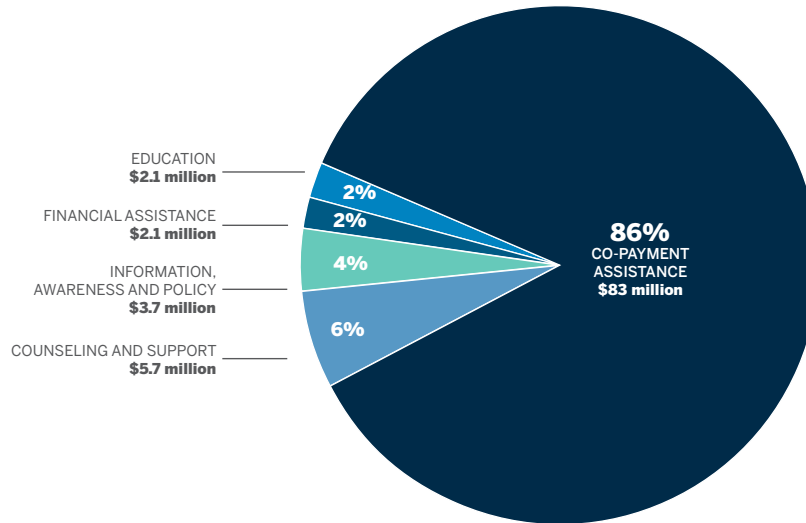
## Revenue \$103.1 million



## Expenses \$102.1 million



## Program Service Expense Distribution \$94.5 million



As one of the most efficient nonprofit organizations, 92 cents of every dollar we raise goes directly to programs helping people with cancer. Donate today at [www.cancercare.org/donate](http://www.cancercare.org/donate).



CANCER*care*<sup>®</sup>

Over 75 Years of Help and Hope

NATIONAL | 275 SEVENTH AVENUE, NEW YORK, NY 10001  
WWW.CANCERCARE.ORG | 800-813-HOPE (4673) | INFO@CANCERCARE.ORG