



CANCERcare®

800-813-HOPE (4673)
info@cancercaare.org
www.cancercaare.org

fact sheet

COPING WITH GASTRIC CANCER

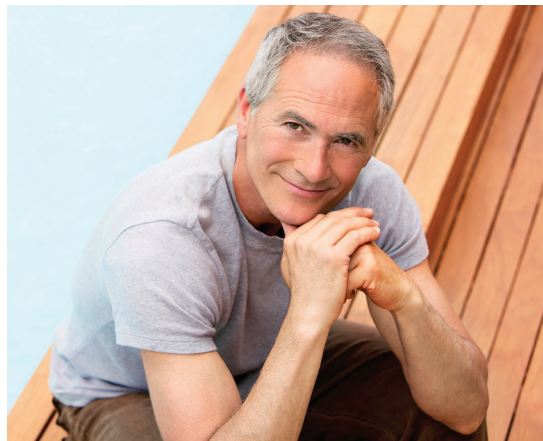
A diagnosis of gastric cancer can leave you and your loved ones feeling uncertain, anxious and overwhelmed. There are important treatment decisions to make, emotional concerns to manage, and insurance and financial paperwork to organize, among other practical concerns.

It is helpful to keep in mind that there are many sources of information and support for people coping with gastric cancer. By learning about this diagnosis and its treatment options, communicating with your health care team, and surrounding yourself with a support network, you will be better able to manage your gastric cancer and experience a better quality of life.

UNDERSTANDING YOUR DIAGNOSIS AND TREATMENT PLAN

Gastric cancer, also called stomach cancer, occurs when the cells in the stomach begin to change and grow uncontrollably, forming a tumor (also called a nodule), which can be either cancerous or benign. Cancer can begin in any part of the stomach, and it can spread to nearby lymph nodes and other areas of the body, such as the liver, bones, or lungs. Most stomach cancers are a type called adenocarcinoma, which means that the cancer started in the glandular tissue that lines the inside of the stomach.

There are a wide range of treatments for gastric cancer, including surgery, radiation therapy, chemotherapy, or targeted therapy. If treatment is necessary, ask your health care team to recommend reliable publications and websites to learn more. Knowing what to expect can help you feel more in control.



THE IMPORTANCE OF COMMUNICATING WITH YOUR HEALTH CARE TEAM

Because gastric cancer is a complex condition with complex treatment options, good communication between you and your health care team is key. Your oncologist, nurses, and other members of your health care team work together to treat your gastric cancer. Since medical appointments are the main time you will interact with your team, being as prepared as possible for these visits is important. It will help ensure that you understand your diagnosis and treatment, get answers to your questions, and feel more satisfied with your overall care. Read CancerCare's fact sheet, "Doctor, Can We Talk?: Tips for Communicating With Your Health Care Team," to learn how you can communicate more effectively with your health care team.

FINDING RESOURCES

While gastric cancer can present many challenges, keep in mind that you do not need to cope with this diagnosis on your own. Your friends and family are important sources of strength and support. There are also many local and national support services available to assist you.

Financial Assistance

There are many organizations that provide help with medical billing, insurance coverage, and reimbursement

(over)

issues. There is also financial assistance available to help people who cannot afford the cost of their medications. Good places to start your research are the websites of the Cancer Financial Assistance Coalition (www.cancerfac.org) and the Partnership for Prescription Assistance (www.pparx.org).

Benefits and entitlements

Local and county government agencies can give you information on Social Security, state disability, Medicaid, income maintenance, the Low Income Heating Energy Assistance Program (LIHEAP), and food stamps. Check your local phone directory for listings.

Housing/Lodging

The Hope Lodge of the American Cancer Society, the National Association of Hospital Hospitality Houses (www.nahhh.org), and other organizations provide temporary lodging for families of a patient who needs to travel far from their home for treatment. Joe's House is a nonprofit organization that offers an online database with lodging information near cancer treatment centers across the U.S. To learn more, visit www.joeshouse.org.

GETTING EMOTIONAL SUPPORT

Adjusting to and finding ways to cope with a gastric cancer diagnosis is an important part of healing, along with treatment. There are many organizations, such as CancerCare, that provide support services to help people affected by cancer. Individual counseling is available to help you learn ways to cope with the emotions and challenges raised by your diagnosis. Support groups can connect you with others in a similar situation in a safe, supportive environment. Cancer affects the whole person and their loved ones, so it's important to create a support network as part of managing your care.

CancerCare® Can Help

Founded in 1944, CancerCare is the leading national organization providing free support services and information to help people manage the emotional, practical and financial challenges of cancer. Our comprehensive services include counseling and support groups over the phone, online and in-person, educational workshops, publications and financial and co-payment assistance. All CancerCare services are provided by professional oncology social workers and world-leading cancer experts.

To learn more, visit www.cancercares.org or call **800-813-HOPE (4673)**.

Facebook: facebook.com/cancercares | **Twitter:** @cancercares

This activity is supported by a contribution from Lilly and a grant from Genentech.



CANCERcare®

National Office • 275 Seventh Avenue • New York, NY 10001

© 2015 CancerCare®