

facing the challenges together



CANCERcare®

2008 annual report

# letter from our Executive Director and President

## *Our Mission*

CancerCare is a national nonprofit organization that provides free, professional support services to anyone affected by cancer: people with cancer, caregivers, children, loved ones and the bereaved. CancerCare programs—including counseling, education, financial assistance and practical help—are provided by professional oncology social workers and are completely free of charge. For more information, call 1-800-813-HOPE (4673) or visit [www.cancercare.org](http://www.cancercare.org).



Diane Blum



Paul M. Friedman

## Dear Friends,

This past fiscal year has been marked by an urgent demand for CancerCare's services, unprecedented in our 64-year history of helping people cope with a cancer diagnosis. Economic pressures, from the rising cost of gas to the soaring out-of-pocket costs of many cancer treatments, have led record numbers of people to our phone lines, websites and offices in need of help—and hope.

Fortunately, thanks to the deep and enduring support of our donors, coupled with sound management of our finances, CancerCare in fiscal year 2007-2008 has been able to continue providing our free counseling, education and financial assistance to more people than ever before across the United States. Some highlights:

**Nearly 108,500 people—up 11% from the previous fiscal year—received one or more CancerCare services**, whether it was for direct counseling, financial support, a

CancerCare Connect® booklet or fact sheet, or as a participant in a Telephone Education Workshop.

That number included **over 21,000 people who received nearly \$4 million in financial assistance—a 30% increase** in the number of grants we awarded over the previous year to cover treatment-related costs like transportation, child care and side-effect medications.

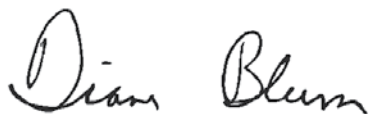
**More than 1.6 million copies of CancerCare's free publications were distributed** to patients, health care providers, caregivers and others, up **28%** over the previous year.

Moreover, in fiscal year 2007-2008, we not only improved how we deliver our existing services but also added new capabilities that broaden our reach, including: revamping our companion website, [www.lungcancer.org](http://www.lungcancer.org), with new and expanded content; the addition

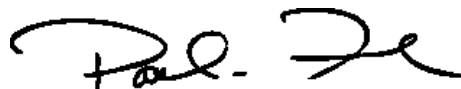
of a new call center we operate for Susan G. Komen for the Cure; and the launch in April 2008 of the CancerCare Co-Payment Assistance Foundation, to help people with certain types of cancer cover their insurance co-payments for treatment.

In this time of economic uncertainty, we anticipate an inevitable decrease in certain areas of fundraising, at least in the short term. But we have benefited from being prudent in our finances for many years, resulting in stability through good and bad economic times.

We will continue to be careful in all that we do to maintain this stability and provide high-quality, professional support services, at no cost, to anyone facing cancer. That has been CancerCare's guiding mission since its founding in 1944, and a legacy on which, with your ongoing support, we will build every day.



Diane Blum, MSW, Executive Director



Paul M. Friedman, President, Board of Trustees

CancerCare 2007-2008

# impact index

CancerCare's free support, education and practical assistance services reached a record number of people in all 50 states and over 85% of U.S. counties in fiscal year 2007-2008.

**TOTAL NUMBER OF PEOPLE** WHO WERE HELPED DIRECTLY THROUGH OUR FACE-TO-FACE, TELEPHONE AND ONLINE COUNSELING, AND OUR CALL CENTERS:

108,500

1,040,000

Number of **unique visitors** to our websites, [www.cancercare.org](http://www.cancercare.org) and [www.lungcancer.org](http://www.lungcancer.org)

42,670

Number of **people who listened** to one or more of our 50 Telephone Education Workshops presented last year

1,600,000

Number of copies of our **free publications distributed** to patients, health care providers, caregivers and others

7,567

Number of **people who signed up** for one or more of our 63 professionally moderated **online support groups** for patients, survivors, caregivers, loved ones and the bereaved

59,559

Number of **subscribers** to CancerCare's monthly E-News

21,414

Number of **people who received financial assistance** to help defray the costs of transportation to and from treatment, pain medications, home care and child care

3,970,000

Total **dollar amount of grants** distributed to CancerCare clients

801,000

Total **dollar amount of co-payment assistance** given to cancer patients

## covering insurance co-payments

*“I am very thankful there are resources to call on when one really needs some help with very large medical bills.”*

When Alberta, from Watsonville, California, was diagnosed with colorectal cancer, her doctors prescribed 11 cycles of a chemotherapy combination. One of the drugs used cost nearly \$7,000 per cycle. While Alberta’s insurance covered most of that cost, she was still responsible for making an upfront co-payment of almost \$600 every time she received treatment—a price that, on her limited income, she simply could not pay.

Tremendous advances in cancer research have brought better treatments that prolong lives and give hope to millions of people like Alberta facing cancer. But accompanying this progress has been a significant increase in the costs of treating cancer. And more and more, those increased costs are being passed on to the patient. Even with health insurance, too many people being treated for



cancer face soaring out-of-pocket costs in the form of higher co-payments for the vital medications they need.

That’s why we created the CancerCare Co-Payment Assistance Foundation. Launched in April 2008, the Foundation helps people with certain types of cancer cover the costs of their insurance co-payments for treatment.



*“The CancerCare Co-Payment Assistance Foundation helped me out in a very difficult situation, and for that I’m very grateful.”*

—Craig, Englewood, Colorado

Alberta turned to us and got help covering her co-payments from CancerCare’s Foundation. So did Craig, of Englewood, Colorado. Diagnosed with pancreatic cancer, Craig was facing a combination of chemotherapy that included a newer, targeted treatment costing upwards of tens of thousands of dollars per year. Craig, who was unable to afford the co-payments his insurance required, heard about our new foundation and gave us a call. Within a few weeks, he received a check from CancerCare to cover a large percentage of his out-of-pocket treatment costs.

“Support like this helps ensure that the high costs of today’s cancer drugs don’t present an obstacle to receiving the highest quality care,” says Michele McCourt, director of the Foundation. “It also provides much-needed peace of mind so patients can focus on getting through their treatment.”

Not even a year old, the Foundation has already helped hundreds of individuals with colorectal, lung, breast and pancreatic cancers meet the challenge of rising drug prices. And, as more funds become available, we hope to provide assistance to even more individuals across an even larger range of diagnoses.

## helping clients get to treatment

*“I have to travel 82 miles each day for treatment. You can see how expensive it can get with around 40 trips to make. I am halfway through and doing well! Thanks again for your help.”*

— recipient of Touching Hearts grant

For too many people facing cancer, the costs associated with their treatment are an ever-increasing burden they are not prepared for. In recent years, the rise in gasoline and fuel costs have made just getting to and from treatment more difficult, especially for people on fixed or lower incomes, and those living in rural areas far away from a hospital or clinic. In fact, in fiscal year 2007-2008, CancerCare experienced a 30% increase in the number of people applying for our limited financial grants, with nearly \$4 million given to over 21,000 people.



Reba was helped with a grant from the Touching Hearts Program.



Many of those recipients are women facing cancer who we've been able to help, thanks to the **Mary Kay Ash Charitable Foundation**. Through our **Touching Hearts Program**, the Dallas, Texas-based charity has enabled CancerCare to provide more than \$1.2 million in individual transportation grants to over 8,700 women across the U.S. since the partnership's launch in 2000.

The Touching Hearts Program is the only national program of its kind providing financial assistance to women diagnosed with any type of cancer. The program has been an especially crucial source of support for two of CancerCare's fastest growing client groups: women diagnosed with lung and colon cancers.

Thanks to our supporters like the Mary Kay Ash Charitable Foundation, missing treatment because it costs too much to get there is one choice patients don't have to make.

As one Touching Hearts grant recipient wrote, "It brought tears to my eyes when the person at your office confirmed the check would be on its way. Thank you for the support and encouragement in this very difficult time...I really needed that helping hand."

### *The “Color of Grief” Workshop Series*

It’s common for many teens who have lost a parent, sibling or other loved one to feel lost, angry, confused or depressed. Art and writing are positive ways of navigating feelings that are hard to sort out or understand, notes program coordinator **Susan Barrett**, who directs CancerCare’s “Color of Grief” workshop series at its regional office in New Jersey.

Barrett, a CancerCare professional oncology social worker trained in art therapy, helps workshop participants explore the use of images, color and the written word as a way to cope with their grief and to heal. Participants also get a chance to meet other people their own age who are facing similar challenges.

The workshop series culminates in an art show where the teens can show their works to family members and friends. The Summer of 2007 show enabled the budding artists to “share the legacy of their loved ones’ lives, and [their own] personal, intimate emotions,” Barrett noted.

The “Color of Grief” workshops are just one example of the kinds of specialized programs CancerCare develops in response to specific populations in need. Tailoring our services to young adults, caregivers, post-treatment survivors and people with rare cancers are just some of the support programs made possible by our donors.



“Color of Grief”  
workshop participants

## *Hispanic Outreach Program*

CancerCare's new Hispanic Outreach Program is another tailored program launched in fiscal year 2007-2008 at CancerCare's regional office in Connecticut. Responding to the increasing demand for Spanish-language cancer support services in that state, the program was established to help predominantly Spanish-speaking families overcome language and cultural barriers in the health care system.

The program includes a support group for women with cancer whose members have dubbed themselves "Latin Women with Power," notes CancerCare social worker **Cristina Lima**, who moderates the group discussions and helps its members learn how to communicate more effectively with their doctors and become better advocates for their own health care needs. The group is also involved in fundraising, having participated as a team in Connecticut's annual Walk for Hope—demonstrating that among our clients are also many of our most loyal supporters.



*“Mi grupo de apoyo me  
ha enseñado que soy más  
fuerte de lo que pienso.”*

*“My support group has shown me  
that I am stronger than I think I am.”*

*—member of CancerCare's Spanish-speaking  
support group for women with cancer*

## honoring a loved one

*A flyer in the hospital waiting room promoting an upcoming workshop on how to cope with a cancer diagnosis immediately caught **Suzanne Staats**' eye.*

Suzanne had just been diagnosed with lung cancer and was at the hospital with her husband, **Bob**, for her first chemotherapy appointment. Full of uncertainty and daunting questions about what was going to happen to her and their family, the Staats decided to attend the workshop.

"As luck would have it," Suzanne later recalled, "we sat next to Win." **Win Boerckel**, who oversees CancerCare's National Lung Cancer program, was one of the featured speakers at the workshop. He mentioned the support group he was moderating specifically for people with lung cancer.

Suzanne immediately signed up. Then Bob, too, joined another CancerCare support group, specifically for caregivers, where he was able to share his feelings and



Suzanne and Bob Staats

experiences with other spouses in similar circumstances. The couple also met with Win for individual counseling.

Over time, Suzanne learned valuable coping skills and how to be her own best advocate. That included both Suzanne and Bob sharing their story with the public to help raise awareness for people coping with lung cancer.

Last year, CancerCare embarked on the redesign of its companion website devoted to lung cancer, and Suzanne volunteered to serve on the advisory board. Her unique perspective as a patient and advocate was invaluable in determining appropriate, reliable and up-to-date content on a variety of topics relevant to people facing lung cancer. The website, [www.lungcancer.org](http://www.lungcancer.org), was relaunched on November 1, 2007, to commemorate Lung Cancer Awareness Month.

Sadly, Suzanne passed away earlier this year. Her legacy to CancerCare continues through the special fund her husband Bob and their children established in her memory. Today, the **Suzanne Mercier Staats Memorial Fund** at CancerCare helps make sure that others have a place to turn for help, and that no one ever need face a lung cancer diagnosis alone.



*“When one word changes their world. . .  
CancerCare makes all the difference.”*

What better way to describe the scope of CancerCare’s services than through the individual stories of the people we’ve helped?

That’s why, when we set out to revamp our public service print ad campaign in late 2007, we turned to actual CancerCare clients to bring our message of help and hope to life.

Clients like Statia and Brandon, who were featured in the CancerCare for Kids® ad. After losing her husband and the father of her three sons to leukemia, Statia called on CancerCare with her youngest son, Brandon, seeking help to cope with their grief.

“Brandon wasn’t doing well in school, and was acting out a lot because of

the anger and frustration of losing his father,” says Statia.

Each week over a period of several months, both mother and son received individual counseling from a CancerCare social worker. Statia describes the changes she saw in Brandon as a result:

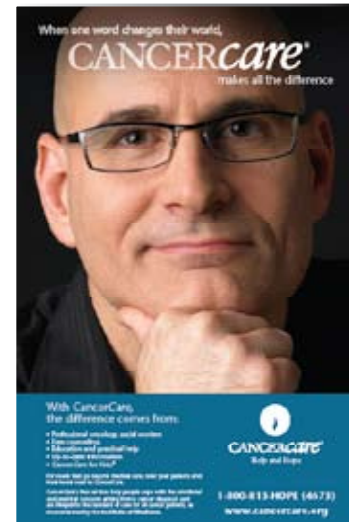
“They helped him learn how to handle and understand his emotions so that he stopped fighting. His grades even picked up. We’re really grateful to CancerCare.”

Ann, another CancerCare client who volunteered to be a subject for our new ads, says that one of the hardest things about going through treatment was that, despite her many devoted

friends, she had no immediate family to lean on. She found the support she needed through her CancerCare social worker, whose “attention and understanding, not to mention her sense of humor and font of information, have been invaluable.”

At the photo shoot, Ann met Jean, another client and volunteer model. The two women found a common bond in their cancer experience and by the end of the day, a new friendship had bloomed.

This heartwarming campaign was made possible thanks in large part to the health care communications agency, Altum. Since 2003, CancerCare has worked with Altum on our public service print



New CancerCare ad campaign, launched in June 2008.

ads, which the agency's creative team has designed and placed in dozens of oncology-oriented professional journals. Last year, these placements, made available at no cost to CancerCare, had a total value of nearly \$1 million.

For the new ad campaign, Altum's creative team again contributed their *pro bono* services to craft the campaign's new tagline and design. The Altum team also brought to the project veteran New York photographer

Marty Umans, who captured in our client-models the human spirit of the people we serve every day.

The new ads were launched in June 2008 and have already appeared in numerous professional publications, as well as all new CancerCare Connect® booklets. We are grateful to Altum's creative team, Mr. Umans and to our clients for putting a "new face" on the services we've provided since CancerCare's founding in 1944.

# board and committee members

## **National Board of Trustees**

### **President**

Paul M. Friedman

### **Executive Vice President**

Susan Smirnoff

### **Vice Presidents**

Margaret R. Diaz-Cruz,  
ACSW

Edward C. Lauber

Maggy M. Siegel

### **Treasurer**

Timothy M. Dwyer

### **Assistant Treasurer**

David S. Erickson

### **Secretary**

Audrey Boughton

### **Members**

Janet Dewart Bell

Jan Myers Cook

Frank Doroff

Deborah Dunsire, MD

Louis A. Guzzetti, Jr.

Donald J. Hayden, Jr.

C. Hugh Hildesley

David J. Keisman

Albert G. Nickel

Marsha J. Palanci

Michael Parisi

William C. Pelster

Bert M. Petersen, Jr., MD

Andrew Pizzo

Matthew E. Ros

Dorothy Schachne

Michael W. Schechter

Miranda Schiller

David L. Stone

Milton G. Strom

James B. Swire

Samuel D. Turner

Linda T. Vahdat, MD

Michael S. Weiss

Michael D. Widlitz, MD

Pamela Suthern Wygod

## **Client Advisory Committee**

Andrea L. Andrlik, MSW,  
ACSW

Cynthia Bass

Evelyn Boake

Mary Ann Colegrove

Jan Myers Cook

Gregory Daniels, MD

Jack Denman

Patti Dewing

Nelson Dones

Lynn Flanagan

Ramy Gafni

Patrick Garbe

Kathryn Hamilton, MA,  
RD, CDN

Agnete Liu

Catherine Marshall, PhD

Calvin Martin

Sue Mossman

Joan and Joe Sommer

Kirsten Sommer

Ted Sommer

Monica Taylor

Mary Zapor

## **Communications Committee**

### **Chair**

Michael Parisi

Liz Kearns

Mark Krueger

Carol Lin

Karen Miller

Susan Newberry

Albert G. Nickel

Gail Safian

Laura Schoen

Susan Smirnoff

Sandra Stahl

Jill Tannenbaum

## **Development Committees**

### **Chair**

Audrey A. Boughton

Leonard D. Amato

Abby Ambinder

Thomas A. Andruskevich

Alexander Anglim

Mark Bachmann

Ilaria Barion

David P. Bartscher

Laura A. Bartscher

Bertrand Bersch

Arlene R. Brickner

Marlene G. Brown

Michael Brown

Tammy K. Brunskill

Helene L. Byrnes

David V. Campbell

Shannon Campbell

Steven P. Caporale

Angela M. Cautillo

Cynthia L. Citrone

Adrienne J. Cleere

Rich Cohen

David B. Cole

Charles Collier

Dorothy W. Crenshaw

Susanne D'Ariano

Terry Davis

Christopher H. DeGrazia

John L. DeMelis

Andrea DeVries

Kathleen M. DiGiovanna

Tim Donahue

Peter Donohue

H. F. Doroff

Tom Edwards

Debby Eisenstein

Nydia Ekstrom

Charles Ellis

David S. Erickson

John N. Evans

Michelle Everman

William Federici

Michael Feeney

Donna Feigenbaum

Brenda Ferrante

Virginia T. Ferrara

Steve Ferrer



Michael J. Fishoff  
Debbie Freire  
Norman J. Fried  
Paul M. Friedman  
Renee Friedman  
Lauren Fuchs  
Yansi Fugel  
Janice Garofalo  
John A. Gentile  
Robert M. Giglietti  
Daniel E. Glatter  
Heather A. Glatter  
Elida Gollomp  
Jeffrey Grinspan  
Donald J. Hayden, Jr.  
David Heater  
Joyce Heller  
C. Hugh Hildesley  
Stuart Hoberman  
Regina Humanitzki  
Emily C. Hyde  
Douglas Jones  
Jeffrey Kampf  
Sujay Kango  
Lori Kaplan  
Rebecca Kave  
Shabnam Kazmi  
Candy Kelly  
Brendan M. Kerrigan  
Jeffrey Koelbel  
David Kott  
Mark G. Kris  
Bob Lape  
Edward C. Lauber  
Paulette P. Laurenzi

Faye Lazear  
Carolyn Lesh  
Robert M. Lia  
Nina LoBue  
Edmund Lukas  
Fran Lukas  
John H. Maret  
John Masucci  
Ann McDermott-Kave  
Sandra B. Mealia  
Wayne Meichner  
S. E. Merkerson  
Nanette R. Meyer  
Deborah Miglis  
Julia Mischo  
Ed Moragas  
Mary V. Morales  
Jacki Muniz  
Gerald Najarian  
Michael Nardo  
Marsha J. Palanci  
Barbara Pandolfo  
Andrew Pizzo  
Gary Polkowitz  
Michael Polkowitz  
Christine Pronek  
Joanna Pruess  
Johannah Purdon  
Steven Radetsky  
Richard H. Raphael  
Kristin Reed  
Sybil F. Resnik  
Matthew E. Ros  
Lianne Rostan  
Sandy Rubinstein Klein

William Rue  
Rich Sackin  
Rhonda Samuel  
Janice Schaefer  
Heather L. Schechter  
Laura F. Schoen  
Michele Schwartz  
Hemanshu Shah  
Smita Shah  
Maggie M. Siegel  
Eleanor Sigona  
Glenn W. Simon  
Jinny Simon  
Susan Smirnoff  
Geni Spells  
Robert Spiegel  
Walter M. Steppacher  
Cliff Stober  
William Straughn  
Milton G. Strom  
Linda Sweeney  
Guido Tebano  
Helen Terrezza  
Lou Terrezza  
Beth Thompson  
Joelle G. Todaro  
Joseph W. Tortorice  
Dana D. Tyler  
Ana Venezia  
Irene M. Viento  
Egon von Foidl  
Zack D. Warringer  
Michael S. Weiss  
Sharon Weiss  
Wilhelmina Wiland

Jayshree Winters  
Angela Yurkunas  
Catherine S. Zilling

## **Finance and Audit Committee**

### **Chair**

Timothy M. Dwyer

Audrey A. Boughton  
David S. Erickson  
Paul M. Friedman  
David L. Stone  
Samuel D. Turner  
Michael S. Weiss

## **Junior Committee**

Sara Austin  
Sarood T. Baig  
Ali Brafman  
Jennifer Condon  
Daniel E. Glatter  
Heather A. Glatter  
Liz Ostow  
Silvana Perelli  
Charles P. Purzner  
Meena Subramoni  
Stacy Wallenstein

## **Medical Advisory Committee**

Karen Antman, MD  
Joseph S. Bailes, MD  
Robert Comis, MD  
Ezekiel J. Emanuel, MD  
Kathleen M. Foley, MD

Jimmie Holland, MD  
Mark G. Kris, MD  
Robert J. Mayer, MD  
Larry Norton, MD

**Program Advisory and Oversight Committee**

**Chair**

Margaret R. Diaz-Cruz, MSW

Jan Myers Cook  
Marcia DeSonier  
Debra Erwin  
Patrick Garbe  
Robin Kornhaber, MSW  
Bert M. Petersen, Jr., MD  
Matthew E. Ros  
Maggy M. Siegel  
Milton G. Strom  
Linda T. Vahdat, MD  
Dava Weinstein, MSW  
Tammy Weitzman  
Michael Widlitz



# CancerCare staff

## *Executive Director*

Diane Blum

## **Finance and Administration**

### *Chief Operating Officer*

John Rutigliano

### *Finance*

Thomas Ciccotelli,  
*Controller*

Barry Chester

Daniel Kowalewski

Salvatore Selkow

Aleksandr Yeselev

### *Human Resources*

Ann Navarria, *Director*

Janet Rodriguez

### *Information Technology*

Hector Perez, *Director*

Augustus Pajotte

### *Database Management*

Forrest Buckman, *Director*

Tiffany Cooper

Mary Kate Parsons

### *Facilities*

Francis Scrotchings, *Manager*

Duane Gumbs

Anthony Murphy

Maria Pastor

## **Regional Management**

### *Connecticut*

Lisa Cannella,

*Regional Director*

### *New Jersey*

Stephanie Karlo,

*Regional Director*

## **Development**

### *Director of Development- Institutional Giving*

Sue Lee

### *Corporate and Foundation Giving*

Robin Naismith

Elizabeth Nystrom

### *Corporate Sponsorships*

Amanda Kessler

Christina Wyman

### *Director of Development- Individual Giving and Special Events*

Rebecca Womble

### *Individual Giving*

Natalia Hayeem-Ladani

Marian Paglia

Yelena Zatulovsky

### *Special Events*

Roberta Downs

Meaghan Foley

Katerina Kormas

Leslie Tan

### *Development Operations*

Melvin Mendez

Marisa Rospos

Lyndsay Varsaci

Taisha Whitaker

## **Regional Development**

Katelyn Foran

Kathy Trethaway

Stephanie Weirsman

## **Communications**

### *Director of Communications*

Jeanie Barnett

### *Outreach and Marketing*

Monica Cavazos

Lindsay Osborn

### *Website*

Jacqueline Zahora, *Director*

Thomas Schuck

## **Programs**

### *Program Division Director*

Rosalie Canosa

### *Social Services Management*

Floyd Allen

Winfield Boerckel

William Goeren

Richard Hara

Kathleen Nugent

Vilmarie Rodriguez

Sandra Sanchez

Sandra Tripodi

### *Social Services*

Anne Archer

Cerissa Arpaio

Cynthia Bass

Dominick Bonanno

Sandra Caparco

Allison Carney

Kristy Case

Maria Chi

Erin Columbus

Laiza Costa

Angelique Cruz

Wendy De Leon

Richard Dickens

Nicole Di Martino

Melissa Dressel-Paschke

Alisa Ellis

Vonessa Emmanuel

Elizabeth Ezra

Diana Forand-Pike

Marissa Fors

Katherine Fromm

Aimee Gross

Margaret Healy

Gina Hernandez

Wade Iwata

Sarah Kelly

Stacy Kramer

Julie Larson

Cristina Lima

Julia Little

Leora Lowenthal

Keith Lyons

Brooke Mann

Glenn Meuche

Nora Molloy

Judith Mosca

Rachel Odo

Sonia Pacheco

Jodi Paris

Tonya Potts

Aracelis Rodriguez

Essie Roman

Bridget Sheehy

Jacqueline Socastro  
Patricia Spicer  
Ella Strzepa  
Marilyn Wald  
Adline Warwick Thompson  
Sara Wicks  
Claudette Young

#### Education and Training

Carolyn Messner, *Director*  
Lauren Farley  
Diana Napoli  
Dawn Zador

#### Financial Assistance

Jane Levy, *Director*  
Brenda Castellanos  
Grant Glidden  
Janice Johnson  
Cheryl Medina  
Maria Quijano

#### Outreach

Rochelle Sax, *Director*

#### Quality Assurance

Kay Ng

#### Thrift Shop

*Director of Retail Operations*

Caroline McKinnon

#### Thrift Shop Operations

Mary Brown  
Kathleen Malatesta

#### Team Members

Silvia Bracco  
Wioletta Filipowicz  
Richard Gross  
Elijah Hills  
Mary Morrissey  
Julio Pesce  
Rita Singh  
Christel Veissid  
Selene Weaver  
Nilda Yambo

#### Co-Payment Assistance Foundation

*Director of Co-Payment  
Assistance*

Michele McCourt

#### Co-Payment Assistance Program

Stephanie Blakely  
Rita Idrovo-Sinclair  
Marcos Perez  
Bennie Speaks, Jr.  
Lisa Tagliavore  
Laura Talavera



# CancerCare volunteers

From helping with our fundraising events or organizing their own to serving as advocates on behalf of CancerCare, our volunteers provide invaluable support to the organization throughout the year.

Alena Abramowitz  
Alicia Ambrosini  
Brigette Anderson  
Georgine Arpaio  
Zachary Arpaio  
Nikki Baptist  
Susan Baptist  
Steve Barbouris  
Tina Barcello  
Laura Barnett  
Gloria Barral  
Barbara Begley  
Robyn Belcher  
Bernie Bermudez  
Jessica Bernardo  
Regina Bernardo  
Victoria Bernardo  
Stephanie Besson  
Linda R. Blackwell  
Eleanor Boresta  
Gisele Boresta  
Gladys Bregenzer  
Jim Bregenzer  
Mary Ellen  
    Brennan-Connelly  
Christina Brittis  
Robin Brody

Brandon Browne  
Statia Browne  
Bill Bush  
James R. Caissy  
Angela Capone  
Chris Carmody  
Tristan Carpenter  
Kathleen M. Carr  
Russ Cassar  
Michael Cattano  
Mary Chambers  
Beth Chan  
Samantha Chan  
Russ Chapman  
Zoie Chen  
Pauline Cheung  
Rich Chuna  
Chiara Citrone  
Robert Citrone  
Robert Clay  
Madeline Clinton  
Erin Cody  
Mark J. Cody  
Mary A. Cody  
Megan Cody  
Charles Collier  
Danielle Comforti  
Carmel Connelly  
Amanda Connor  
Patricia Connor  
Grace Conway  
Meghan Conway  
Donnie Cooke  
China Cooper  
Beth E. Cotenoff

Christina Craw  
Jessica Craw  
Kaylee Cuomo  
Joan Dammer  
Ann M. Darmastaetter  
Alex Davis  
Jacqueline Davis  
Julie L. Davis  
Paige Davis  
Sarah Davis  
Alexandra DeFeo  
John L. DeMelis  
Mary DeSimone  
Mark A. Dewyngaert  
Kathleen M. DiGiovanna  
Meghan DiGiovanna  
Karl Dombroski  
Timothy W. Donahue  
Vivian Drucker  
Michael Dziuk  
Rick Eadie  
Barry Elberg  
Charles W. Ellis  
Emily Ellis  
Stacey Ellis  
Evie Elphick  
Miriam Emerson  
Stephanie Ercegovic  
Frederic Erskine  
Derek B. Fahey  
Mineuittie Farley  
Linda Feingold  
Chris Fevola  
Helen Fikre Gebresiliassie  
Paula Filardi

Liesl Fischer  
Michael J. Fishoff  
Liz FitzGerald  
Molly Fitzpatrick  
Carmela Fives  
Karen Flanagan  
Colleen Foran  
Marian Foran  
Lisa Forrow  
Adriana Foster  
Eloise Foster  
Margurite Foster  
Susan Frankenback  
Hallie Fuchs  
Sierra Furey  
Ramy Gafni  
Jean Gallati  
Victoria Gallati  
Emma Gallo  
Ruwani Ganepola  
Donald Garrity  
Michelle Garza  
Ellen Gasso  
Judy Gemza  
Robert M. Giglietti  
Ralph Giordano  
George Glatter  
Sherry Glatter  
Howard S. Glazer  
Linda Gnat-Mullen  
Steven Goldberger  
Brian Golin  
Stuart Gollomp  
Michelle Gonzales  
Jen Goodson

Robert Goodson  
Annette C. Gosselin  
Alexandra Gottlin  
Geneva Hager  
Daniel Hagmann  
Jessica Hammill  
Meghan Hassett  
Hannah Haynes  
David Heater  
Madeline Hefferan  
Will Herling  
Dawn Hiltz  
Mackenzie Hiltz  
Flo Honig  
Ashley Horrell  
Debbie Horrell  
Bernard Hughes  
Jim Hughes  
Melissa Ikram  
Harriet Insley  
Kathy Janz  
Ken Johnson  
Eileen Kaeser  
Margaret Kaeser  
Meghan Kaeser  
Gittan Karki  
Shabnam Kazmi  
Irene Kefalinos  
Bill Kelly  
Candy Kelly  
Kathleen Kincaid  
Leah King  
Anne Kircher  
Angela Knight  
Kathy Koether

Kristina Kovac  
John Kozub  
Stacy Kramer  
Gloria Krodlund  
Shari Krugman  
Lawrence Kuizema  
Stephanie Lamb  
Lori Langdon  
Molly Lariccia  
Edward C. Lauber  
Barbara Lawson  
Bianca Leon  
Grace Leon  
Michelle Lerner  
Irene Levy  
Robert M. Lia  
Diane Lin  
Charlotte Loake  
Nina LoBue  
Maria Lombardi  
Vanessa Lopez  
Susan Lowenthal  
Gina Ludlow  
Grace Ludlow  
Meliani Lust  
Lawrence Lutzak  
Cindy Luzcando  
Chris Lyddy  
Lauren Madden  
Dominick Magnotta  
Missy Magnotta  
Nancy Magnotta  
Anne Mah  
Ben Maltz  
Marianne Marcoe

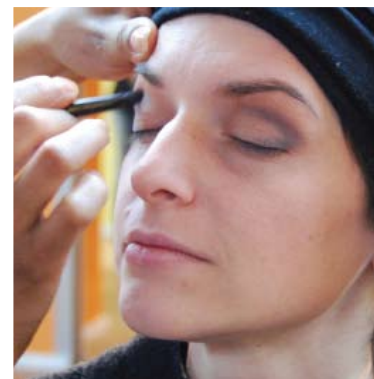
Margaret P. Marengo  
Jennifer Martin  
John Masucci  
Erica Matlin  
Anna Mattera  
Ann Marie Maya  
Jetti McClure  
Dana McCreesh  
Kira McCreesh  
Madison McCreesh  
Ann McDermott-Kave  
Iris Mckines  
Brian McMahan  
Mollie McMullan  
Melvin Mendez  
Allegra Mendiratta  
Annette Mendiratta  
Ruth Merchant  
Phelisha Midy  
Thomas Miles  
Rose Marie Minore  
Keith Mizuguchi  
Kelly Ann Moren  
Christopher Morgan  
Georgina Morgan  
Ellen A. Morrone  
Elaine Moylan  
Bob Muehlhauser  
Amanda L. Muise  
Bianca Muniz  
Jacki Muniz  
Jacqueline Muniz  
Khassandra Muniz  
Michael Murphy  
Paola Murphy

Kathie Murren-Koether  
Kathleen Nave  
Rita Newman  
Barbara Nilsen  
Norwalk Senior Center  
Sewing Ladies  
Jennifer O'Flanagan  
Barbara Oliveri  
John Oppel  
Mary Oppel  
Cindy Ording  
Cathleen Ostow  
Liz Ostow  
Sheila Outcault  
Sonia Pacheco  
Marsha J. Palanci  
Barbara Pandolfo  
Jonathan Parter  
Angela Perkins  
Concetta Peters  
Courtney A. Petti  
Cori Plotnick  
Philipia Poli  
Maria Pomponio  
Johannah Purdon  
Linda Mei and Al Purdon  
Charles P. Purzner  
Jeff Radler  
Kyle Radler  
Michael J. Raduazzo  
Adam Raphael  
Richard H. Raphael  
Italo Rebecchi  
Tracy Reese  
Spencer Reichig

Jan Rissolo  
Mimi Rivera  
Angelica Rodriguez  
Barbara Romano  
Megan Romano  
Audrey Rosenberg  
Fred Sacramone  
Angela Salmon  
John Sandroni  
Jessica Saunders  
Karen L. Suave  
Janice Schaefer  
Sonnie Schaffner  
Rebecca Schindler  
Russell R. Schmidt  
Joan Schoenfeld  
Daniel Schwedes  
Janine Schwedes  
Lauren Sciletta  
Karen Seacrist  
Alison Seibert  
Steven Setton  
Wendy Shao  
Eileen Shigo  
Susan K. Shuck  
Rochelle Sicklick  
Phyllis Silverman  
Steve Silverstein  
Jessica Simon  
Sarin Siriamonthep  
Frank Sivillo  
Marissa Skor  
Amber Smith  
Ansley Smith  
Isabelle Smith

Jean Smith  
Julie Smith  
Meg A. Smith  
Remi Smith  
Shauna Smith  
Kristy Snyder  
Joel B. Snyder  
Micki Sokol  
Debbie Stapleton  
Ernie Steiner  
Paul Steppacher  
Walter M. Steppacher  
Gabrielle A. Stevenson  
Hailey Stevenson  
Kendall Stevenson  
Rachel Strader  
Edwin Stritzl  
Melissa Stritzl  
Janet Sung  
Katie Sutherland  
Walter M. Sutherland  
Joanie Svedeman  
Madison Sweedler  
Kennedy Synder  
Eleanor Taibi  
Sandra Tasch  
Lisa Tasch  
Ilda Teran  
Helen Terrezza  
Lou Terrezza  
Beth A. Thompson  
Bruce A. Thompson  
Katie Thompson  
Kiersten Thompson  
Kurt B. Thompson

Merily Tine  
Gail Tonick  
Ellen Tripodi  
Mona Turka  
Paul A. Uhlman  
Marty Umans  
Jos van der Woert  
Jean-Claude Velasquez  
Roberta Vida  
Alexandra Vigliarolo  
Marie T. Vigliarolo  
Mary Vita  
Michelle Vizzo  
David Wade  
Allison Wales  
Katie Walewski  
Amy Waple  
Deborah Wasserman  
Kevin Weirsman  
Sarah Weirsman  
Brandon Weiss  
Toni Weiss  
Mike Weng  
David Wurf  
Michelle K. Wurf  
Kathleen Yaccarino  
Deborah Yu  
Callie Zilling  
Catherine S. Zilling  
Lindsey Zilling



# telephone education workshop faculty

The nation's leading authorities on cancer and related topics dedicate their time and expertise to CancerCare's Telephone Education Workshops so that our clients have timely, reliable cancer information.

Floyd Allen, LMSW  
Edwin Alyea, MD  
Kenneth Anderson, MD  
Lowell Anthony, MD  
Deborah Armstrong, MD  
Sarah Auchincloss, MD  
John Balan  
Keith Bellizzi, PhD, MPH  
Bridget Bennett, MS, RD, CDN  
William Bensinger, MD  
James Berenson, MD  
Jordan Berlin, MD  
Ronald Blum, MD  
Sharon Bober, PhD  
Winfield Boerckel, LCSW-R,  
MBA  
Dominick Bonanno, LCSW-R  
Richard Boyajian, RN, MS  
Jeffrey Bruce, MD  
Ronald Bukowski, MD  
Harold Burstein, MD, PhD  
Kimberly Calder, MPS  
Ilana Cass, MD  
Gerald Chodak, MD  
Erin Columbus, LMSW  
Kevin Cooper, MD  
Nessa Coyle, NP, PhD, FAAN  
Gregory Daniels, MD, PhD  
Terry Day, MD  
Thomas DeLaney, MD

George Demetri, MD  
Angela DeMichele, MD, MSc  
Richard Dickens, LCSW-R  
Adam Dicker, MD, PhD  
Robert Dreicer, MD, FACP  
Betty Duggan  
Peter Enzinger, MD  
Elizabeth Ezra, LMSW  
Stewart Fleishman, MD  
Lindy Fox, MD  
Debra Friedman, MD  
Richard Furman, MD  
Judy Garber, MD, MPH  
David Garfield, MD  
Randy Gascoyne, MD  
Larisa Geskin, MD, FAAD  
Julia Gralow, MD  
Generosa Grana, MD, FACP  
Steven Grunberg, MD  
John Hainsworth, MD  
Daniel Haller, MD  
Robin Hershkowitz, LCSW  
Jimmie Holland, MD  
Gail Hunt  
Judy Jones, LPC  
Brad Kahl, MD  
Michael Keating, MB, BS  
Kevin Kim, MD  
Thomas Kipps, MD, PhD  
Mark Kris, MD  
Joseph Lane, MD  
John Leonard, MD  
Jan Lewin, PhD  
Rogerio Lilenbaum, MD, FACP  
John Link, MD  
Charles Loprinzi, MD

Nicki Lowenstein, MS,  
RD, LD, CNSD  
Keith Lyons, LCSW-R  
John Macdonald, MD  
Suzanne Martz-Dones, RN, MA  
Michael Mauro, MD  
David McDermott, MD  
Carolyn Messner, DSW,  
LCSW-R  
Glenn Meuche, LMSW  
Jennifer Mills, LMSW,  
MPH, CHES  
Matthew Milowsky, MD  
Edith Mitchell, MD, FACP  
Laurel Northouse, RN,  
PhD, FAAN  
Owen O'Connor, MD, PhD  
Kutluk Oktay, MD  
Ruth Oratz, MD, FACP  
Joyce O'Shaughnessy, MD  
Guadalupe Palos, RN,  
LMSW, DrPH  
Yehuda Patt, MD  
Edith Perez, MD  
Douglas Peterson, DMD, PhD  
Maria Petzel, RD, CSO,  
LD, CNSD  
Peter Pisters, MD, FACS  
Pierluigi Porcu, MD  
Carol Portlock, MD  
Marshall Posner, MD  
Oliver Press, MD, PhD  
Noopur Raje, MD  
Cheryl Rock, PhD, RD  
David Rosenthal, MD  
Hope Rugo, MD

Carolyn Runowicz, MD  
Douglas Sawyer, MD, PhD  
Julie Silver, MD  
Susan Slovin, MD, PhD  
Thomas Smith, MD, FACP  
Patricia Spicer, LCSW  
Gary Steinberg, MD  
Debra Thaler-DeMers,  
BSN, RN, OCN  
Marcie Tomblin, MD, MS  
Linda Vahdat, MD  
Gauri Varadhachary, MD  
Carol Viele, RN, MS  
Samuel Whiting, MD, PhD  
D. Lawrence  
Wickerham, MD  
Eric Winer, MD  
Debra Wolf, Esq.  
Clive Zent, MD



# CancerCare contributors

The support of these generous individuals, corporations and foundations ensures that CancerCare can continue to provide its professional support services completely free of charge to anyone in the U.S. affected by cancer.

## More than \$500,000

The Lance Armstrong Foundation  
Mary Kay Ash Charitable Foundation  
AstraZeneca Pharmaceuticals LP  
Avon Foundation  
Bristol-Myers Squibb Company  
Genentech, Inc.  
Estate of Laura L. Iacono  
Susan G. Komen for the Cure  
Estate of Mary Montz  
The New York Community Trust  
Novartis Pharmaceuticals Corporation  
sanofi-aventis US

## \$250,000-\$499,000

Abraxis BioScience  
Amgen Inc.  
Mary Delahanty Clapham Charitable Trust

## \$100,000-\$249,999

Estate of Angela Casey  
Estate of Laura Delano Eastman  
Eisai, Inc.  
Eli Lilly and Company  
Entertainment Industry Foundation  
Ferrero USA, Inc.  
Estate of K. Cornelia Hesselbach  
Marion Esser Kaufmann Foundation  
Lavelle Fund for the Blind  
Merck & Co., Inc.  
Millennium Pharmaceuticals, Inc.  
National Cancer Institute  
NIH/DHHS  
Leo Oppenheimer and Flora Oppenheimer Haas Foundation  
Roche  
Schering-Plough  
WebMD Charitable Foundation  
Estate of Selma Weinberg  
Estate of Francis Wilks

## \$50,000-\$99,999

ARIAD Pharmaceuticals, Inc.  
Cephalon, Inc.  
Cindy and Robert Citrone  
Discovery Capital Management

Dorothy and David Schachne  
GlaxoSmithKline  
Estate of Helen K. Gooden  
Hirshberg Foundation for Pancreatic Cancer Research  
Helen Hoffritz Charitable Trust  
Susan G. Komen for the Cure, North Jersey Affiliate  
The Greater New York City Affiliate of Susan G. Komen for the Cure  
Edward C. Lauber and Marsha J. Palanci  
Lehman Brothers Foundation  
Yvonne Lucassen 1991 Trust  
Lymphoma Research Foundation  
OSI Pharmaceuticals  
Pfizer Inc.  
Estate of Harold Rapp  
Estate of Nathan Sivin  
Estate of Charles M. Wilds

## \$25,000-\$49,999

Angela Andrews Ryan Triple Negative Breast Cancer Fund  
Anonymous  
Estate of Joseph Baschkopf  
Bayer HealthCare Pharmaceuticals

Bear Stearns & Co., Inc.  
Audrey A. Boughton  
Breast Cancer Alliance, Inc.  
Estate of Ann Bregman  
The Llewellyn Burchell Charitable Trust  
Filomen M. D'Agostino Foundation Corp.  
Estate of Nelson C. Doland, Jr.  
FactSet Research Systems Inc.  
Susan B. and Paul M. Friedman  
Lauren and Russel Fuchs  
Genomic Health, Inc.  
The Hewitt Foundation  
ImClone Systems Incorporated  
Ingersoll-Rand Company  
Laurie Kayden Foundation  
Estate of Kathy Knight  
Erna T. Lewine Trust  
Lindi Skin  
Estate of Patricia N. Nanon  
National Marrow Donor Program  
Melinda and Norman C. Payson  
Pinnacle Foods Group, LLC  
Annette and Andrew Pizzo  
Rain Tech Products LLC  
Blue Sky Accessories  
Lillian Robbins Revocable Trust  
S3 Partners, LLC

Estate of Rita Scotti  
Carrie and Chris  
W. Shumway  
The Silverman Supporting  
Foundation  
Estate of Jeannette  
Ferreira Smith  
The Starr Foundation  
Beth Ann and Kurt B.  
Thompson  
Tweezerman International  
Genoveva Morales Uchalik  
Pancreatic Cancer  
Foundation  
Estate of Emil Wagschal  
Wyeth Pharmaceuticals

**\$10,000-\$24,999**

Abbott Laboratories  
American Society of  
Clinical Oncology  
Amper, Politziner &  
Mattia, P.C.  
Annual Dan Ferrante  
Golf Outing  
Frank J. Antun Foundation  
Daniel Cohn  
CommonHealth  
Coty, Inc.  
Cytogen Corporation  
Deloitte  
Eagle Interiors, Inc.  
Easton Strategy  
The Samuel and Rae Eckman  
Charitable Foundation, Inc.  
Elsevier Oncology

Laura and David S. Erickson  
Estate of Ruth B. Ferguson  
John Garzone  
Gerry and John A. Gentile, Jr.  
The Gettinger Foundation  
Goldman, Sachs & Co.  
The Horace W. Goldsmith  
Foundation  
Estate of Manuel Gonzalez  
Greater Bridgeport Area  
Foundation  
Hagedorn Fund  
Harrison and Star  
Marilyn L. and Donald J.  
Hayden, Jr.  
Barbara and Paul G.  
Himmelright  
Hines  
Horizon Blue Cross/  
Blue Shield  
Roy A. Hunt Foundation  
Patricia Jehle and James Reidy  
Kayak For A Cause  
Allison and David J. Keisman  
F.M. Kirby Foundation, Inc.  
Estate of Michele  
Klipstein-Cohen  
Susan G. Komen for the Cure,  
Central and South Jersey  
Affiliate  
Susan G. Komen for the Cure,  
Connecticut Affiliate  
KPMG L.L.P.  
LifeBrands  
Liz Claiborne, Inc.  
Amy R. and Thomas F. Marano

Craig J. Martone  
Katrina and Jeffrey Mayer  
Merrill Lynch  
The Near & Far Aid  
Association, Inc.  
Dana and Albert G. Nickel  
Elin and Michael B. Nierenberg  
O'Neill's Pub & Restaurant  
PDL BioPharma  
Terry C. and William C. Pelster  
Gladys Pincus  
Provident Bank Foundation  
Public Sector Campaign  
Quest Diagnostics  
Heather L. and Michael W.  
Schechter  
Estate of Charlotte Schulman  
The Edith M.  
Schweckendieck Trusts  
Estate of Barbara J. Seskis  
The Sidney, Milton and  
Leoma Simon Foundation  
Skadden, Arps, Slate,  
Meagher & Flom, L.L.P.  
Southern Wine & Spirits  
of America, Inc.  
Estate of Fredericka M. Steiner  
Edith W. and James B. Swire  
Teb's Troops, Inc.  
Beth C. Torotlani Foundation  
Bridget and Marc J. Toscano  
Turner & Goss, LLP  
Samuel D. Turner  
Unilever  
United Way of Long Island

United Way of Somerset  
County  
Wallace Special Projects  
Fund  
Weber Shandwick  
Worldwide  
S.P. Wijegoonaratna

**\$5,000-\$9,999**

Accentra INC.  
Added Extras, LLC  
Mildred and Gerald Aksen  
Thomas A. Andruskevich  
and Suzanne McMillan  
Arkwin Industries  
ATG Corporation  
B.R. Cohn Winery  
The Bank of America  
Foundation  
BDO Seidman, L.L.P.  
Brian P. Friedman Family  
Foundation  
Cancer Institute of New  
Jersey  
CapCana  
Kristin and Charles Collier  
Culpeper Memorial  
Foundation, Inc.  
Robert and Joan Dircks  
Foundation, Inc.  
Elizabeth L. and Timothy M.  
Dwyer  
Martin Elias  
Ernst & Young, L.L.P.  
Eurasia Group, LTD.  
Exelixis, Inc.

Estate of Willet D. Fields  
Fifth Avenue Presbyterian  
Church  
Fox Point Management LLC  
FUJIFILM Medical Systems  
U.S.A., Inc.  
GE Money  
Genvec  
George R. Chaby, Inc.  
The Aaron & Betty Gilman  
Family Foundation, Inc.  
Heather Anne and Daniel E.  
Glatter  
GPC  
Grotta Fund of the Jewish  
Community Foundation  
of MetroWest  
Tim Gunn  
Hillary Taylor Living Trust  
HSBC Bank USA  
Regina and Stephen T.  
Humanitzki  
IMS Health  
The Jacobs Childrens'  
Charitable Foundation Inc.  
Barbara and Alan L. Jacobs  
Jules and Evelyn Jacobsen  
Charitable Trust  
Weslie R. and William  
Janeway  
Johnson & Johnson Family  
of Companies-  
Matching Gifts  
Virginia W. Johnston  
and Douglas E. Waters

Steven Kaplan Memorial  
Foundation  
Karma Foundation  
Elizabeth Y. and William P.  
Kelly  
Laureen and Mark Lauber  
Lehman Brothers  
The Fay J. Lindner  
Foundation  
David Loeb  
Main Street 5K  
Mark Krueger and Associates  
Caroline D. and David S.  
Marren  
McCarter & English  
Patrick McMahon  
Moody's Foundation  
Matching Gifts Program  
Morgan Stanley Dean Witter  
Naugatuck Savings Bank  
Foundation, Inc.  
Elizabeth K. and Phillip J.  
Neugebauer  
New York Mercantile  
Exchange  
Robert C. O'Brien  
Orrick, Herrington &  
Sutcliffe LLP  
Ortho Biotech Products, L.P.  
Palm Bay Imports  
Michael Parisi  
Pharmion Corporation  
Pitney Bowes Inc.  
Robert Price  
PriceWaterhouseCoopers LLP  
Hilda and Sal Randisi

Randy Reiff  
Susan G. and Bruce R. Ross  
Miranda Schiller  
David Schoenthal  
Estate of Lillian Semberg  
Shelter Rock Foundation  
Barbara A. and Milton G.  
Strom  
Jan Stuebing Smyth  
and Jim Smyth  
The Seth Sprague Education  
& Charitable Foundation  
Theory  
Tudor Investment  
Corporation  
Estate of Jane Turadek  
UBS Financial Services Inc.  
Unilever United States  
Foundation, Inc.  
United Way of Millburn-  
Short Hills  
United Way of  
Monmouth County  
Estate of Mildred Vohs  
Walgreens  
Wedgewood  
Communications, Inc.  
Marci and Michael S. Weiss  
West Pharmaceutical  
Services, Inc.  
Whole Foods Market  
Sandra and Michael D.  
Widlitz  
Wilentz, Goldman &  
Spitzer, P.A.

Sandra and Jeffrey  
Zimmerman

**\$2,500-\$4,999**

Aetna Inc.  
Robert Allen  
ALM Media, Inc.  
Cindy Wieting and  
Leonard D. Amato  
Evan Ambinder and  
Deborah Kanner  
Anonymous  
Anthem Blue Cross &  
Blue Shield  
AT&T  
Dina M. Battipaglia  
Beardsley, Brown & Bassett  
Myrna and Stephen Bell  
Bentley Long Island  
Bowne Enterprise  
Solutions, LLC  
Bresnan Communications  
Hazel and Roy A. Broadfoot  
The Bulkley Foundation Trust  
Charles Bunstein  
The Campbell Family  
Foundation  
Mildred L. Cannon Trust  
Amelia M. and Steven P.  
Caporale  
Collection XIIX, Ltd.  
Community Thrift Shop, Inc.  
Jan M. and William J. Cook  
Margaret R. and Mario  
Diaz-Cruz  
Digital Products Inc.

Barbara E. and Michael D. Ditzian  
Shelley and Timothy Dolan  
Doremus Financial Printing  
John P. Doyle  
Drinker Biddle & Reath LLP  
Einstein Cancer Fund, Inc.  
Jane A. and Charles W. Ellis  
Emmet, Marvin & Martin, LLP  
David Epstein  
Stephanie Ercegovic  
Susan and William J. Federici  
Katherine and John Feldman  
Fidelity Information Services  
Fifth Avenue of LI Realty Assoc.  
Marek Fludzinski  
Dorothy A. and Jonathan M. Fox  
Barbara and Jerry Freundlich  
Alan Friedman  
Julian W. Friedman  
Friends of CancerCare  
Genesys Conferencing  
Myra and Lawrence Goldschmidt  
Great Eastern Printing Co.  
Beverly and Hugh Greenberg  
Timothy J. Greene  
Joan L. and Louis A. Guzzetti, Jr.  
GWG Enterprises, LLC  
DeLisa Harmon  
Harriet and Ronald M. Hersch  
Hilb, Rogal and Hamilton Company of CT, LLC  
Hirtle, Callaghan & Co.

Margaret and John Kaeser  
The Kandell Fund  
Daniel Keating  
Kelly Family Foundation  
Keryx Biopharmaceuticals, Inc.  
Lauren and David R. Kott  
Law Offices of Claudia Wagner LLC  
Lazard Freres & Co. LLC  
Sharon and David A. Leiman  
Fern Letnes and David Rognlie  
Michelle I. and Andrew S. Levine  
Long Island Fund for Women & Girls  
Ruth Norden Lowe and Warner L. Lowe Memorial Fund  
Fran and Edmund Lukas  
Kristen and Sean Mahoney  
Heather and Robert F. Maione  
Ellen and Clause G. Manasse  
Mancini-Duffy Associates  
Margaret and Jeffrey Mathieu  
Charlene McKay  
McKinsey and Company  
Sandra B. Mealia  
Jeffrey W. Meehan  
Metzger-Price Fund, Inc.  
Heidi G. and Brian J. Miller  
Whitney S. and Victor B. Miller  
Milton Miyashiro  
Lisa J. and Samuel L. Molinaro  
National Brain Tumor Foundation  
Priscilla Natkins and Seth Novatt

New York City Combined Federal Campaign  
North Jersey Media Group Inc.  
Patrick O'Leary  
Oncology Associates, L.L.C.  
Kim M. Pellizzi  
Perot Systems  
Kara and Jesse R. Perrin  
Princeton Financial Systems, Inc.  
The Prudential Foundation  
Matching Gifts Program  
Pyramid Floor Covering  
Quintiles Inc.  
Ken Rader  
Ralsey Group Ltd.  
Reed Exhibition Companies  
Rose Ray Revocable Trust  
Jill Rosenberg  
Michael Rotter  
Rust-Oleum  
Frances and Vincent Saltarelli  
Jan Schaefer and Roy Abramowitz  
Linda and Richard Schaps  
Hemanshu S. Shah  
Gertrude F. and William F. Shelley  
Jinny and Glenn W. Simon  
Robert Sloan  
Susan Smirnoff and Kirk Zachary  
Solaris Health System  
Hopestill R. and Paul G. Spillane, Jr.  
Daniel Spina

Daniel J. Staub  
William E. Stefan  
Alison and Nicholas Sternberg  
David L. Stone  
Patti and Vincent A. Terranova, Sr.  
The David and Sara Schnell Fund  
The Sloman Foundation  
The Young Womens League of New Canaan  
Town of East Hamptom  
United Parcel Service  
United Way of Greater Mercer County  
Linda T. Vahdat and Torodd Kummen  
Verizon Wireless  
Anne T. Vitale  
Estate of Sigfried Warter  
Susan and William Webster Weichert  
Lenora Weinblatt  
Tracy and Tim Whille  
Wilhelmina and Michael R. Wiland  
Winfield Foundation  
The Woolley-Clifford Foundation  
**\$1,000-\$2,499**  
525 America  
A Taste of Elegance, Inc.  
Virginia and Roger S. Aaron  
ABCO Peerless Sprinkler Corp.

AccessMED Inc.  
Agabhumu The Best of Bali  
Kelly H. and Peter J. Albano  
Mark Alexander  
Lawrence B. Alletto  
Alvin J. Bart & Sons, Inc.  
Lisa M. and Joseph V. Amato  
Amgen Matching Gift Program  
Richard G. Anderson and Karen J. Wishnick  
Anonymous  
Appleby Charitable Lead Trust  
Erin A. and Christopher Aslanian  
Jackie and Josh H. Astorf  
Isabella Auditore  
Bank of America  
Steven Barbounis  
Ilaria Barion  
Helen Barr  
Valerie Bearinger  
The Donna S. Becker Memorial Fund  
Susan and Stuart Bell  
Grace Bellotti  
Benefit Planning Services, LLC  
The Frances and Benjamin Benenson Foundation Inc.  
Alan Stuart Berlin  
Susan and Alan Berlow  
Janice Abbott and Richard Berstein  
Charlotte Biczi  
Biordi Inc.  
The Bisgeier Family Foundation  
Bloomingdale's  
Diane and Ronald H. Blum  
Nancy and Winfield A. Boerckel  
Kathleen and Stanley Brach  
Nancy Branchesi  
Bristol Haven Foundation  
Gina and Donald Brooks  
Patricia M. Brosnan  
Cake Nouveau  
Michael J. Callahan  
The Carol Ann Campbell Fund  
David Campbell  
Estate of Christopher W. Canino  
Capital Knowledge LLC  
Angie Capone-Rauscher  
Cardholder Management Services, L.L.C.  
Andrew V. Cardone  
Nancy and James P. Carle  
Maryann T. Carlino  
Cars4Charities  
Stacy A. and Barry R. Carus  
Janet M. and Gerald C. Catenacci  
Meryl F. Newman-Cedar and Philip M. Cedar  
Matthew Chasin  
Chef Ho's Peking Duck Grill  
Peter D. Cherasia  
Giuseppe Ciaramitaro  
Lenora and Brandon A. Ciccone  
Blanche Cirker  
CIT GROUP Inc.  
The Cleveland Foundation  
Mary A. and Mark J. Cody  
Betsy and Richard I. Cohen  
Shelley Cohen  
Amy and David B. Cole  
Faith Coleman  
Colgate-Palmolive Company  
Compensation Resources, Inc.  
Robert K. Connors  
Mildred I. Crawford  
Cross Research, LLC  
K. Todd Curry  
Rebecca and Anthony Cutrone  
Karen and Robert D'Addario, III  
Dancker, Sellew & Douglas  
Daniel and Paula Reingold  
2004 Charitable Lead Annuity Trust  
Donn Delson  
Claudia and John L. DeMelis  
Kenneth P. Dengler  
Hester Diamond  
Kathleen M. DiGiovanna  
Dmitry Dinces  
H. Frank Doroff and Stephanie Zernick  
Dove Givings Foundation II  
Karin A. Duncker  
Amy M. and Daniel B. Dunn  
Joan and Robert J. Easton  
Barbara Lee Ebs  
Tom Edwards  
Elisabeth and Balz Eggimann  
Edgar Eisner  
Elizabeth Estroff  
Alicemarie and John N. Evans  
Frederick J. Evans  
Donna M. and Jeffrey M. Farber  
Michael J. Feeney  
Bernard Feinberg  
Denise M. and Joseph R. Ferrara  
Financial Resources  
Federal Credit Union  
Clifton Fink  
Chris Fiore  
Carol and Scott W. Fisher  
Debra B. and Michael J. Fishoff  
Thomas Flexner  
Cyril Forbes  
Daria and William C. Foster  
Patricia C. and Peter B. Foye  
Norman J. Fried  
Janet Friedman  
Robert Frumkes  
Ivana S. and R. Scott Gaillard  
Alan D. Garfield  
Peter Gaslow  
GE Foundation  
Ellen Gelboim  
Barry S. Gellers  
The Genesis Foundation

Stacy and Robert M. Giglietti  
Charles Gilbride  
Mr. and Mrs. Patrick  
Gilmartin  
Tracy and Gary Gmoser  
Amanda J. and Colin Goddard  
Vicki Goldrich  
Jay Goodgold  
Myra and Roy Gordon  
Brigitte and David S. Gouche  
Michael Gould  
Ann Maynard Gray  
Greenberg Taurig, LLP  
Diane Greene  
Ellen and Robert G. Gutenstein  
Carmen Gutierrez  
Daniel Hagmann  
Kathy and William E. Hamilton  
The Hammerman and Fisch  
Foundation  
Beverly Ann and Joseph S.  
Hardin  
Angelina and Sheldon Harrison  
Dana Hart  
Sylvia K. Hassenfeld  
Mr. and Mrs. Peter Haveles  
HealthEd Inc.  
Joyce Heller  
Kevin J. Heneghan  
Louis V. Henston  
Judith & Paul Hochhauser  
Foundation Inc.  
Financial Resources Federal  
Credit Union  
Robert Holmes  
Inge and Richard Horn  
Andrea and Craig M. Horowitz  
Debra L. and Ronald G. Horrell  
Robert G. Hottensen, Jr.  
Hyde Tools  
Lynn and Richard Hyman  
ICI Paints  
Ida Bernstein Memorial  
League, Inc.  
Karen Ann Ingwersen  
Elizabeth and Roger Insley  
Interpool, Inc.  
Introgen Therapeutics, Inc.  
Island Fire Sprinkler Inc.  
M.L. Janklow  
Janssen, L.P.  
Steven Kahn  
Carol F. Kaimowitz  
Nina Kaminer and Allen Cohen  
Isobel and Joe Kampf  
Jeffrey T. Kampf  
The Kantor Foundation, Inc.  
Gary Karlitz  
Judith Kaufer  
Shabnam Kazmi  
Regina M. Keady  
Martha and George A. Kellner  
Ketchie Creek Bakery, Inc.  
Pamela and Noel Kimmel  
Nancy P. and Robert C. King  
Susanne Kirkpatrick  
Steffi L. Kirschner  
Melinda and Philip L. Kirstein  
Rona S. and Alan B. Klopman  
A.E. Kohn  
Colleen M. and Marc M. Kole  
Diane P. and Neil J. Korman  
Mary Ellen and Mark G. Kris  
Roberta and Arnold H.  
Krumholz  
Louis J. Kuriansky  
Foundation, Inc.  
The Kurtz Family Foundation  
La Bonbonniere of Nixon, Inc.  
La Purisima Bakery, Inc.  
Alice and Frank La Sala  
Paulette and John Laurenzi  
Mary Ann and Gerald Laurita  
Leary's Liquor Cabinet  
Hortley G. LeBlang  
Charitable Foundation  
Howard G. Lehman  
Lexus Champions for Charity  
Aaron Liberman  
David A. Leibowitz  
Light Sources, Inc.  
Ellen and Jan Linhart  
Ginny Llobell  
Local Independent Charities  
Katherine Lukas  
Lulu's Bakery  
E. Barry Lyon  
John G. MacFarlane  
Connie Maneaty  
Manhattan Bridge Club  
Associates, Corp.  
Market Access  
Mary Denning's Cake  
Shoppe  
Cynthia First and Scotte  
Matte  
Christopher McClure  
McDonough & Conroy  
Architects, P.C.  
Martin Mcelroy  
Anne Dobbs Bailie and Hugh  
E. McGee  
Patricia A. and Ronald P.  
Mcintosh  
Laura and Robert McMullan  
Meetings & Media  
The Mercadien Group  
Lucille and Edward Meyer  
Virginia and Juan M. Meyer  
Theresa Natalicchio and  
William Mezzomo  
Deborah and Thomas G.  
Miglis  
Elizabeth A. and Douglas  
David Moffitt  
Monday Properties  
Services, LLC.  
Anne L. Moore and Arnie  
Lisio  
Kevin Morgan  
Ted Moudis  
Reggie and Bob  
Muehlhauser  
Katherine Halsey and  
John Thomas Nailor  
Nastasi & Associates  
National Acoustics, Inc.  
National Financial  
Services, LLC  
Navicor Group  
Cindy E. Nelson  
New Alliance Bank  
New Dimensions  
Remodeling Inc.  
New York Biotechnology  
Association, Inc.

|   |   |                                       |  |
|---|---|---------------------------------------|--|
| New York City Transit Authority               | Christopher Quinlan                       | SELF magazine–Conde Nast Publications | Gina and Keith Stempel                           |
| New York Islanders                            | Roanne Margulies and Steven Radetsky      | Mariah and Frank P. Seminara          | Anne R. and Walter M. Steppacher, IV             |
| Children’s Foundation                         | Marcia and Louis Radler                   | Barbara A. and William R. Serpe       | Audrey F. and Richard Steuer                     |
| Gunnar and Lillian Nicholson Foundation Trust | Corbett Ramsey                            | Mark Seruya                           | Lori and Scott D. Stimpson                       |
| Michael Niciforo                              | Ray’s Electric                            | Constance and Robert Shapiro          | Wendy and Clifford W. Stober                     |
| Alexandra and Michael C. Nolan                | Research Matters                          | Martin Shapiro                        | Ellen P. Struk                                   |
| Shirley Nussbaum                              | Sybil F. and David M. Resnik              | Sandra and Robert Shapiro             | The Stupell Foundation                           |
| O’Donnell Iselin Foundation                   | Jan M. and Alan Rissolo                   | Lark and C. Donald Shlimbaum          | Suffolk County Dept. of Health Services          |
| Dalene Lynn and Michael David Olson           | Riverhead Building Supply Corp.           | Barbara Shulman and Brian Friedman    | Amber and William Sweedler                       |
| Miriam Olsten                                 | Marian and David A. Rocker                | Patricia A. Shuster                   | Syde Hurdus Foundation, Inc.                     |
| Ronald M. Ongaro                              | Teresa and Richard Romano                 | Sibby’s Cupcakery                     | Synco Chemical Corporation                       |
| Janet Orsini                                  | Linda C. Rose                             | Michael Siden                         | The James H. & Margaret Labeling Foundation Inc. |
| Cathleen Ostuw                                | Lonnie Rosenberg                          | Maggy M. Siegel                       | Tauk World Discovery                             |
| Craig M. Overlander                           | Susan M. and Robert Rostan                | Rosalie and Leonard Silberman         | Victor Taylor                                    |
| Bill Padula                                   | Dolores Rubino                            | Seth I. Silverstein                   | The Volunteer Center                             |
| Sylvia and Donald A. Parker                   | Ruder Finn, Inc.                          | Janice Smith                          | Renato M. Tichauer                               |
| Karen and James Parles                        | Rue Insurance                             | Meg A. and Steven B. Smith            | Topcon Positioning Systems, Inc.                 |
| Laurie Pask                                   | Amy R. and Andrew S. Russell              | Denise R. Sobel and Norman Keller     | John R. Torrell                                  |
| Carlos R. Pastore                             | Saint Cupcakes                            | Stanley Spector                       | Town of Southampton                              |
| Pat Covelli Foundation                        | Sanky Perlowin Associates, Inc./Sanky Net | Olvis Spencer                         | Turkish Kitchen Inc.                             |
| Angela Percella                               | Joshua Sapan                              | Estate of Frank Spingola              | University Medical Center at Princeton           |
| Janet L. and Robert A. Perro                  | Richard L. Saphir                         | St. Elizabeth’s Church                | University Sport Publication Co., Inc.           |
| Courtney A. Petti                             | Keith M. Schappert                        | Amy M. and Robert M. Stavis           | USA Today  |
| Philip Holzer & Associates                    | Stephanie and Robert Scheetz              | Krystyna M. and Robert L. Steiger     | Van Fossan Foundation                            |
| Phoenix Foundation                            | Anna and Nathan Schindler                 | The Estate of Robert Stein            | Bhavna Vashisht                                  |
| Pier Sixty/Chelsea Piers                      | Schulz Electric Company                   | Robert Stellato                       | Venture Westport                                 |
| PNC Bank                                      | Mr. and Mrs. Sherwood Schwartz            |                                       | Cecilia L. and Dennis L. Verhaegen               |
| Paul Posoli                                   | Janice Cullen and Steven B. Schwartz      |                                       |  |
| Valerie L. and Martyn R. Price                | ScienceFirst, LLC                         |                                       |  |
| Bridget Foley and W. Doyle Queally            |   |                                       |  |

Irene M. Viento  
John L. Vogelstein  
Barbara G. Walsh  
Dana Yao and  
Richard P. Walsh, Jr.  
The Walt Disney Company  
Michael Ward  
Estate of Elaine Waxman  
We As, Inc.  
Robin and William J. Weeks  
Sydelle B. and Andrew  
Weinberger  
Jeffrey S. Weiss  
Harvey M. Weitkamp  
Susan and Benjamin S. Weshler  
The Westport Woman's  
Club, Inc.  
Patricia and John Wetzler  
Leann T. and Gerald C. White  
DeeDee and Michael Wigler  
C.R. Wigness  
Mr. and Mrs. Michael Wiles  
Jane and Mark Wilf  
Martin Wilhelm  
Winthrop-University Hospital  
Elizabeth and Gary Wohl  
The Harry & Rose S. Zaifert  
Foundation

### Gifts in Kind

145 Antiques  
19 Entertainment, Inc.  
20th Century Fox  
212 Kids  
28 Oak Street Restaurant  
3 Forty Grill

525 America  
A Class Act NY, Acting  
Studio for Kids and Teens  
A Cut Above Grooming Salon  
Lauren Abate  
Adele & Agnes  
Michael Adragna  
Adria de Haume  
Adrienne's Corner  
Aerie Resort and Spa  
Agabhumi The Best of Bali  
Agora Spa at the  
Stamford Marriott  
Albergo Castiglione  
Alexander Doll Company  
David Alexander  
Alice's Tea Cup  
Alison Rose New York  
Alison Wachstein Photography  
Allan Reider Studio  
Beverly and Jim Allen  
Alliance Limousine  
Altour  
Cindy Wieting and  
Leonard D. Amato  
American Eagle Outfitters  
*American Journal of  
Hematology/Oncology  
Review*  
*American Medical News*  
American Museum of  
Natural History  
American Symphony Orchestra  
Ameriprise Financial  
Amy's Bread  
*Annals of Surgical Oncology*

Anthony Defranco Salon & Spa  
Anthony-Wright Interiors, LLC  
Apple & Eve LLC  
Apple Seeds  
Aramis and Designer Fragrance  
Arbonne Skin Care  
*Archives of Internal Medicine*  
Arielle's Gallery  
ARK Restaurants Corporation  
Arnie Kolodner Magic  
Artland, Inc.  
Ashley Morgan Designs  
Asphalt Green  
ATG Corporation  
Atlantic City Surf  
Professional Baseball  
Au Bon Pain  
Avalon  
Avellino's  
Avon Foundation  
Ayhan's Shish-Kebab  
B.R. Cohn Winery  
Bachman Co.  
Mark Bachmann  
Bagel Boss  
Baker Knapp & Tubbs  
The Balboa Bay Club &  
Resort  
Ballet Academy East  
Barbetta Restaurant  
Ilaria Barion  
Barlow Hartman  
Public Relations  
Gloria and Manuel Barral  
Bassermann-Jordan  
Beautiful Faces

Beauty & Wellness Spa  
Becker Salon  
Bed Room Matters  
Bedford Inn/The  
Linda Lee B&B  
Arianne Beerbower  
Ben Benson's Steak House  
Ralph Bernacki  
Best in You Life Coaching  
Bice Ristorante  
Bickford Theatre  
Big Apple Circus  
Biscuits and Bath  
Bismarck Phillips  
Communications & Media  
BJ's Wholesale Club  
Black Rock Wine and Spirits  
Katherine Blaney-Miller  
Block Island Seafood  
Company  
Bloomingdale's  
Blossoms  
BLT Restaurants  
Blue Moon Mexican Cafe  
Bluemercury  
Marcy L. Blum  
Blush  
Boar's Head  
Body Designs Fitness  
Center of Paramus  
Bond Street Restaurant  
Bookends  
Bottlerocket Wine and Spirit  
Bouchaine Vineyards  
BR Guest Inc.



|                                |   |                                   |                                 |
|--------------------------------|---|-----------------------------------|---------------------------------|
| Bradford Renaissance Portraits | Chateau Faugeres                                | Continental Airlines              | Debbie Klein Boutique           |
| Brady's at the Station         | Chef Central                                    | Cornerstone                       | Decorative Painting             |
| Brandmans Paint                | Chelsea Piers                                   | Corporate Coffee Systems          | Krista DeGennaro                |
| <i>Breast Journal</i>          | Management, Inc.                                | <i>Cortland Forum</i>             | Delamar Greenwich Harbor        |
| Brennan's Restaurant           | Chemo Comfort                                   | Cote Golf Instruction             | Delman Footwear                 |
| Bridgeport Bluefish            | Lindsay and Stephen Chessare                    | Cottage Pharmacy                  | Dendor Wine Management          |
| Brooklyn Academy of Music      | Chi Dancentre, LLC                              | Margaret Cotter                   | Simone DePaolo                  |
| Brooklyn Bags                  | Children's Museum of the Arts                   | Count Basie Theatre of New Jersey | The Depasquale Spa              |
| Bryant & Cooper Steakhouse     | Christian Dior                                  | Country Curtains                  | Design Lighting by Marks        |
| Bubble Lounge                  | Chuck's Steakhouse                              | Todd Coven, MD                    | Michelle DeStefano              |
| Budding Gourmet                | Michael J. Cienki                               | Cowgirl Restaurant                | Devi Kroell                     |
| Buenos Aires Restaurant        | Citadel Trading Corp.                           | Cozy's Cuts for Kids              | DHC USA Inc.                    |
| Jackie Bunn                    | Cindy and Robert Citrone                        | Craft                             | Tony DiDio                      |
| Burberrys Worldwide            | City Cricket                                    | Jill Craft                        | Diageo North America            |
| Helene L. Byrnes               | CK Bradley                                      | Craftsygirl                       | Diamond Creek Vineyards         |
| Café du Monde                  | Classic Kids                                    | Creations by Stefano              | Bobbi Dickerman                 |
| Café Matisse                   | Clearview Cinemas                               | Megan Crofford                    | Dievole                         |
| Calera Wine Company            | The Cleveland Cavaliers                         | The Crow's Nest                   | Kathleen M. DiGiovanna          |
| Cambridge Silversmiths         | <i>Clinical Advances in Hematology/Oncology</i> | CURE Media Group                  | Discovery Museums               |
| Camden Riversharks             | <i>Clinical Journal in Oncology Nursing</i>     | Cynergy Spa                       | Discovery Networks              |
| CapCana                        | Cliveden Inn                                    | D'Agostino Supermarkets, Inc.     | Disney Theatrical Productions   |
| Cape Classics                  | CMG Design and Filaberto Faux Finishing         | Daily Barn Stores                 | Distillery No. 29               |
| Capri Boutique                 | Cogent Public Relations                         | Dairy Plus, Inc.                  | DKNY                            |
| Carnegie Hall                  | Cole Haan                                       | Daily Treat Restaurant            | Lynn and Peter Donohue          |
| Carolee                        | Collection XIX, Ltd.                            | Dakotah Salon & Spa               | Dorian's Seafood Market         |
| Llona Carson                   | Harry Collings                                  | DANIEL                            | Dorney Park & Wildwater Kingdom |
| Castell-The Wine Domain        | Colony Florist                                  | Susanne and Paul W. D'Ariano      | Dry Creek Vineyard              |
| Catch Your Breath Yoga         | Suzanne Connolly                                | Darien Golf Center                | Duck Pond Cellars               |
| CBS News                       | Carole B. Connor                                | Darien Ice Rink                   | Duck Walk Vineyards             |
| CDC Coffee                     | Conrad Chicago                                  | Darstar Creations                 | Duncan Hines                    |
| Champagne Montaudon            | <i>Consultant PA/NP Edition</i>                 | Dave & Busters                    | Duxiana                         |
| Champagne Nicolas Feuillatte   |   | David Allen Marketing             | Edible Arrangements             |
| The Chanler at Cliff Walk      |   | De Gustibus at Macy's             | Tom Edwards                     |
| Character                      |   |                                   | Fanny and Leonardo Efron        |

Eighty One  
Eileen Fisher  
Einarsen Photography  
Elizabeth W. Gift Baskets  
Elmer's  
Elsevier Oncology  
Elyse Winery  
David Emberling  
Equinox Fitness Clubs  
Ernst & Young, L.L.P.  
Estee Lauder  
Euphoria Spa  
European Day Spa  
Bob Fahey  
Faige Timeless Portraits  
Fairfield Theatre Company  
*Family Practice Internal  
Medicine*  
Fancy Letters Ltd.  
The Fairmont San Francisco  
Felidia  
Audrey Felli  
Virginia T. Ferrara  
Fin Restaurant  
Firefly Children's Boutique  
Fisher-Price  
Fitness Works  
Follow My Lead Dog Training  
Florence Footnotes  
Mary Grace Forgione  
Fortunoff  
The Fountain Spa  
Frames of Mine  
Ana B. Francisco  
Anna Liza Franco  
Frederick Goldman Inc.

Debra E. Freire  
FreshDirect  
Eunice Fried  
Susan B. and Paul M. Friedman  
From Spain, Inc.  
Yansi Fugel  
Funky Monkey  
Marcia and John Gagnon  
Jayne S. and Scott D. Gallagher  
Rachel Gammer  
Garden Party  
Garelick & Herbs  
Garner Golf  
Gastrointestinal  
Cancer Research  
Genentech Oncology  
Giannone Wine & Liquor Co.  
Stacy and Robert M. Giglietti  
Gito  
The Glazier Group Inc.  
Adelle Godoy  
Al Goldberg Custom Rods  
Eric Goldsmith  
Fay Goldstein  
Sondra and Jack Goldstein  
Elida and Stuart Gollomp  
Antonio Goodman  
Jocelyn Gordon  
Gracie's Bazaar  
The Grain House Restaurant  
The Grand Café  
The Grapes of Roth  
Frank Grasha  
Greater Trenton  
Symphony Orchestra  
Green Farms Spirit Shop

*Greenwich Magazine*  
Greenwich Medical Skincare  
Greenwich Yoga  
Grgich Hills Celler  
Mark Grinnell  
Jeffrey Grinspan  
Mona Grinspan  
Tim Gunn  
*Gynecologic Oncology*  
Hackensack Chronicle  
Hair & Nail Excellence  
Hampton-Haddon  
Marketing  
Hands on Pottery  
Hanzell Vineyards  
Harper Collins  
The Harrison Family  
Harry's Hair Design  
Harry's Wine & Liquor  
HB Wine Merchants  
Barbara Hecht  
Heitz Wine Cellars  
*Hematology Oncology  
News & Issues*  
Henredon Interior  
Design Showroom  
Henriot Inc.  
Hermes  
Ramona M. Herring  
Higashi  
High Grove  
Hugh Hildesley  
Suzanne B. Hilser-Wiles  
and Brannon Wiles  
Hirshleifer's

Historic New Orleans  
Tours, Inc.  
Ronald Hoffmann  
Home Goods  
Hotsauce  
Hotel Marlowe,  
A Kimpton Hotel  
*House Magazine*  
HSBC Bank USA,  
National Association  
Regina and Stephen T.  
Humanitzki  
Hunan Taste Restaurant  
Huntington Learning Center  
Hyatt Regency Greenwich  
II Michelangelo Ristorante  
and Lounge  
Inn at Essex, Vermont's  
Culinary Resort  
Intech, Inc.  
*International Journal of  
Radiation Oncology  
Biology Physics*  
International Wine &  
Spirits Shop  
J Vineyards & Winery  
Jack of Diamonds Jewelers  
International, Inc.  
Jacqueline Stanley Opticians  
Janet's Quality Baked Goods  
JB Pet Supply  
Jean Marc Brocard  
Jean-Georges Management  
Jekyll and Hide Luggage  
and Leather  
Jewelry Box

Jewelry by Jose Grant  
The Jewish Museum  
Jivamukti Yoga School  
JL Rocks  
Joanie Landau Designs  
Jonathan Adler  
Jordan Vineyard & Winery  
Barry Josephson  
*Journal of American Academy  
of Physician Assistants*  
*Journal of Bone & Joint  
Surgery*  
*Journal of Clinical Oncology*  
*Journal of Supportive  
Oncology*  
*Journal of the American  
Medical Association*  
*Journal of the National  
Cancer Institute*  
*Journal of the National  
Comprehensive Cancer  
Network*  
Judd's Hill  
Judith Leiber LLC  
The Judith Ripka  
Companies, Inc.  
Julia Gray Ltd.  
Julien Farel  
Jungle Red Hair Salon  
Just Desserts  
Justin's Ristorante  
Juva Skin and Laser Center  
Karen Lutzky Design  
Karl Kemp Assoc. Antiques  
Naomi Katcher  
Kate's Paperie

Marcia Kaufman  
Josh Kavaler  
Kenny's  
Kian Matthew LLC  
Kid O  
Kids at Art  
KidsEvents.com  
Kidville  
Kimono Art  
Kitchen Kabaret  
Knozzz/Kitschy Kouture  
Kramer Portraits  
Kratiem Thai Cuisine  
Francine Caplin-Kravitz  
and Richard H. Kravitz  
Ruth B. Kurtz  
LH Brenner Inc.  
La Puerta Del Sol East  
Laboure-Roi  
L'Absinthe  
Mary Claire and  
Christopher J. Lagno  
Lakewood BlueClaws  
Lancaster Estate  
Jen Lancaster  
Lancelotti Housewares  
Jean Lapinski  
Lauber Imports  
Edward C. Lauber and  
Marsha J. Palanci  
Laura Geller Make-Up Studio  
Lauren DiNardo  
LaViano Jewelers  
Bessie Lawrence  
Layfield Energy

Le Civette Country  
Resort, Florence  
Learning Express  
Lebson Jewelers  
Lee Calicchio, Ltd.  
Harriet Lembeck  
Let's Dress Up!  
Muriel G. Levin  
Karen Levine  
Lexington Luggage  
Lexus of Greenwich  
Lia Schorr Skin Care  
Lindi Skin  
Jan Linhart, D.D.S.  
Penelope Lips  
Little Capers  
Little Eric Shoes on Madison  
Little Firehouse Theatre  
Liz Claiborne, Inc.  
David Loeb  
Lonny's  
L'Oreal USA Inc.  
Louise Blovin Media  
Audra Lowe  
Luther Ogden Inn  
Luxottica  
Liz and Charles Luyster  
Macy's  
Maddy's 390  
Mahwah Bar & Grill  
Main Street Nursery  
MakesGoodScents.com  
Malee Thai Restaurant  
Valerie and Jason Malinowski  
Mango Jam  
Manhattan Beer Distributors

Manhattan Fruitier  
Manhattan Theatre Club  
Marc Jacobs  
Marchesato degli Aleramici  
Marcia's Attic  
Market Basket  
Market Table  
Mary Lawrence Corp.  
Karen Masri  
Massage Envy  
Lois J. Mawby  
Maximin Gunmaus  
Maxxels  
Maywood Market  
MCC Theater  
Theresa McLeod  
Laura and Robert McMullan  
Margaret M. McNamara  
Carolyn McPherson  
Virginia McRill  
Me & Ro  
Frances and Jack Meehan  
Meigray Group  
Melani Lust Photography  
Melissa & Doug, Inc.  
The Melting Pot  
Mercedes-Benz of Fairfield  
Meson Madrid  
Michael Allen Opticians  
Michael C. Fina Co.  
Midday Gallery  
Mim's Restaurant & Lounge  
Miner Family Vineyards  
Mirror Lake Inn Resort & Spa  
Misaki Japanese Restaurant  
Melissa Monosoff

Montes Winery  
Edward Moragas  
Mary V. Morales  
Morris Museum  
Lavinia R. Morrison  
Morton's Steakhouse  
Mo's Wine  
Movado Group, Inc.  
Moving Strength  
Mary Elizabeth Mroziak  
Sharon Murphy  
Murray's Cheese  
The Museum of Modern Art  
Mystery and Mayhem  
Marlene Nadle  
Nancy & Co.  
Nanette Lepore  
Lorrie and James Nantz  
Nanwass Fashions for The  
Worth Collection  
Naomi Tussin  
Natalie's Special Café  
National Basketball Association  
National Council of Jewish  
Women I New York Section  
Natura Bisse  
NBC  
NBC Entertainment  
Neiman Marcus  
*New Canaan-Darien Magazine*  
*New England Journal of  
Medicine*  
New Jersey Devils  
New Jersey Jackals  
New Jersey Nets  
New Jersey Performing  
Arts Center  
The New Victory Theatre  
New York Bakery  
New York Giants  
New York Islanders  
New York Kids Club  
New York Knicks  
New York Mets  
New York Rangers  
New York Red Bulls  
*The New York Sun*  
Newark Bears  
Eva Newborn  
Rivka Sue and Geoff Newman  
Newman's Own, Inc.  
News 12 Connecticut  
Nickelodeon Family Suites  
Nicola Boutique  
Nike  
Adelia G. Niles  
Niletti Creations, Ltd.  
Nina's Argentinian Pizzeria  
Nino Franco Spumanti  
Noelle The Day Spa  
Nola Restaurant  
Northern Valley Suburbanite  
Notting Hill Jewelry  
NY Pilates  
Oberg & Lindfuist  
Ocean Spray Cranberries, Inc.  
Okemo Resort  
Ole Mole  
On Parade Diner  
On the Square  
*Oncology*  
*Oncology Net Guide*  
*Oncology News International*  
*Oncology Nursing News*  
Optics Plus  
The Original Frank Pepe  
Pizzeria Napoletana  
OSI Pharmaceuticals  
Foundation  
Marjie Ottaviano  
Otto Enoteca Pizzeria  
Oyster Bar  
Oyster Bay Wines,  
New Zealand  
Paetec  
Paint Tube  
Arnold Palmer  
Palooza at Fairfield Art  
Pan Aqua Diving, Inc.  
Pane Vino Ristorante  
The Pantry  
Paper Mill Playhouse  
Paragon Salon and Beauty  
Spa  
Paramount Sales &  
Marketing  
Parrot Cay  
Pamela and Martin Pastore  
Pat O'Briens  
Pathmark  
Patz & Hall Wine Company  
The People's Improv Theater  
Pequot Liquor  
The Pet Mom  
Peter Elliot  
Marilyn Petrosa  
Pets on Lex  
The Phantom Company  
Pi Lauren Spa Di Bellezza  
The Picture People  
The Picture Spa at  
Motophoto  
Piermont Properties  
Pierre's Restaurant &  
Wine Bar  
Pine Hollow Country Club  
Pinnacle Health & Fitness  
Planting Design Professionals  
Porter House New York  
Positano Restaurant  
Preservation Hall  
Prime Time Butcher, Inc.  
Print International  
Priti Organic Spa  
Private Picassos  
Joanna Pruess and Bob Lape  
Pure Salon  
Purse Strings  
R. Van Loan Custom Framing  
Rachel Ashwell Shabby Chic  
Steven Radetsky  
Antwaan Randle El  
Dagmar Ranker  
Ravenswood Winery, Inc.  
Raymond Vineyard & Cellar  
Red  
Reebok Sports Club/NY  
Regal Entertainment Group  
Regina's Steakhouse  
and Grill  
Reichsgraf von  
Kesselstatt Estate  
Renzo Masi

|                              |                              |                            |                           |
|------------------------------|------------------------------|----------------------------|---------------------------|
| Sybil F. and David M. Resnik | Salon Roco                   | Steven Smedresman          | Leslie P. Tan             |
| Ridge Vineyards, Inc.        | Sandestin Golf and Beach     | Solari's Restaurant        | Tapas                     |
| Donna Riley                  | Resort                       | Soundview Electronics      | Target Training           |
| Daisy and Eddie Rivas        | Sandra Marx Handbags         | Southport Home Decorators  | Tea & Sympathy            |
| River Palm Terrace           | Sanibel Harbour Resort       | Southwest Airlines         | Telepan Restaurant        |
| Roberta Roller Rabbit by     | & Spa                        | SOYJOY                     | Temptations Jewelry &     |
| Roberta Freymann             | Sanrio Inc.                  | Spa Ja                     | Accessories Ltd.          |
| Nancy Roberts                | Sanzari's New Bridge Inn     | Spanx                      | Patti and Vincent A.      |
| Rocca                        | Sarabeth's Kitchen           | Richard Spindler           | Terranova, Sr.            |
| Roger Salls Photography      | Julie Saviano                | Mary Jo Spoto              | Thalassa Restaurant       |
| Romero Designs               | Carolyn Schaebe              | St. Supery Vineyards       | Thanisch                  |
| Ron del Barrilito            | Heather Linn and             | & Winery                   | That Look                 |
| Ronald J. Krowne, Creative   | Michael W. Schechter         | Deborah A. and             | Theatre Extras            |
| Candid Colour                | Sally Schermerhorn           | William C. Stapleton       | Alan Thicke               |
| Photography                  | Christa and Matt Schwartz    | Stark Carpet               | Thomas Miller             |
| The Roosevelt Hotel          | Michele and Charles          | Herbert A. Starr           | Thomas'                   |
| Rosa Mexicano Restaurant     | Scicolone                    | Christine M. Stein         | Beth Ann and Kurt B.      |
| Mary Rosenberg               | Sebastini Vineyards          | Stella! Restaurant         | Thompson                  |
| Rosenblum Cellars            | <i>Seminars in Oncology</i>  | Christine Stone            | Philip C. Thurston        |
| Rosenthal Cosmetic Surgery   | <i>Seminars in Radiation</i> | Elizabeth P. Stone         | Tiffany & Co.             |
| & Skin Care Center           | <i>Oncology</i>              | Stony Hill Inn             | Toqueville                |
| Roshambo Winery              | The Shaggy Dog               | Studio Uma                 | Tom James Company         |
| Rotenier Ltd                 | The Shakespeare Theatre      | Sugardaddys                | Patricia Tompkins         |
| Roundabout Theatre           | of New Jersey                | Super Stop and Shop        | Tortilla Flats Restaurant |
| Company                      | Shaolin Kung Fu              | SuperMac                   | Tory Burch                |
| Roy Teeluck Salon            | Training Center              | Surf & Sand Resort         | Total Look Salon          |
| Royal Doulton USA            | Christine M. Shaub           | Susie Creamcheese          | Tourneau                  |
| Rubin Museum of Art (RMA)    | Susan Shaw                   | Swarovski North            | Trader Joe's              |
| Rudd Vineyards & Winery      | The Shoe Box                 | America, Ltd.              | Trattoria Fratelli        |
| Rudy's Flower Shop           | Shoe-Inn                     | Sweet On You               | Tredici "13" Ristorante   |
| Rufus & Company              | The Shore Press              | Synco Chemical Corporation | Trefethen Vineyards       |
| Margie M. Ruggiero           | Maggy M. Siegel              | Taj Hotels Resorts and     | Trek Bikes                |
| Saks Fifth Avenue            | Jinny and Glenn W. Simon     | Palaces                    | Trek Travel               |
| Sally Ling's                 | Sue Simpkins                 | Taj Palace                 | Trendmix                  |
| Salm Estate                  | Six Flags Great Adventure    | Talking Movies             | Trendsetters              |
| Salon 5                      | Skuut, LLC                   | Francine Tama              | Tribeca Grill             |

Calvin Trillin  
True North Tickets  
Trump Enterprise Resorts  
Tsonetos Furs  
Turquoise Medical Spa  
Mary A. Tuzio  
Tweezerman International  
Ultissima Haircutters & Co.  
Marty Umans  
Uncle Wally's  
Unilever  
US Figure Skating  
Valera Global, Inc.  
Venture Westport  
Verizon Wireless  
Jack Verrier  
Viader Vineyards & Winery  
Victor Talbot's  
Irene M. Viento  
Village Gazette Ridgewood  
Cynthia Villalba  
Vin Divino  
Vine Floral & Event Design LLC  
Vineyard Vines  
Vista Travel Consultants Inc/  
Intercontinental Resort Bali  
Vital Theatre Company  
Viva Vino Imports  
Diane Von Furstenberg  
W.B. Bassett Company  
Suzyn Waldman  
Walpole Woodworkers  
Martha B. Warschau  
Water Mill Lumber  
Waterworks

Sydelle B. and Andrew  
Weinberger  
Weingut des Grafen Neipperg  
Weingut J. J. Prum  
Weingut Schloss Saarstein  
Marci and Michael S. Weiss  
Wells Wigs Unlimited  
Caroline Wells  
Wendy Mink Jewelry  
Wente Vineyards  
Debra K. Westom  
Westport County Playhouse  
Westport Gift Shop  
*Westport Magazine*  
Westwood Pets Unlimited  
Whims Jewelry  
Whiskers Holistic PetCare  
Whitestone Hardware Corp.  
Whole Health Now  
Wieting Designs  
Wilhelmina and Michael R.  
Wiland  
Wild West City  
William Morris Agency  
Felisa A. and David Wind  
Winemakers  
Winesong  
Jeffrey S. Witt  
Wixon Industries  
Wolffer Estates  
Michele Wolkoff  
The Woman's Personal  
Health Resource  
Woodbury Country Deli  
Woodbury Pizzeria  
& Ristorante

Workman Publishing Co.  
Yin Beauty and Arts Spa  
YMCA of Fairfield  
Zabar's  
Zack's Dance Loft  
Zagat Survey, LLC  
Cristina Zayas  
Zoffony-Sanderson  
Zoran

### **The Special Funds of CancerCare**

*Established by individual  
donors in honor or memory  
of a loved one.*

Linda Abolafia  
Dorothy Agisim  
Cholly Atkins  
Benjamin Battee  
Donna S. Becker  
Memorial Fund  
Timothy C. Biggs  
Hymie Blufarb  
Lonnie Blutstein  
Mary Boerckel  
John R. Bradley  
Bonnie Brooks  
Zora Cernjul Memorial  
Fund  
Rena Chasin  
Bruce Cohen Memorial  
Fund  
Peggy Coudert  
Cutler Family Fund  
Estate of Chaim and  
Esther Diamond

Michael Donohue  
Shirley Doroff Memorial Fund  
Carol F. Durchin  
Charlotte Dursee  
Einstein Cancer Fund  
Kenny C. Eng  
C. David Evans  
Joseph A. Fezza  
E. Margie Filter Fund  
Beverly Frankel  
Gerald Friedman  
Harold A. Friedman  
Saralee Friedman  
Anthony Frumento  
Abraham and Sara Gell Fund  
Margaret Gibelman  
Charles S. Ginsberg  
Alyssa Gold  
Esther Golden Memorial  
Fund  
Natalie G. Goldstein  
Frances Goldwater  
Ann Gow  
Belle Mintzer Graf  
Sylvia Greenspun Memorial  
Endowment Fund  
Ms. Margery E. Gross  
Eric F. Haray  
Sondra Holland  
Flora Gibbs Jackson  
Helen Kahn Memorial Fund  
Steven Kaplan Memorial  
Fund  
Laurie Kayden  
Jack Kemach Memorial Fund  
Eleanor Kompa

Shirley Korman  
Hortley G. LeBlang  
Charitable Foundation  
Leiman Family Asterisk Fund  
Donna Levien Memorial  
Fund  
Jonas Levy  
Lydia Libero  
Rosa Lorenzo  
Verna Niles Memorial Fund  
Deidre O’Dea Memorial  
Fund  
Jennifer D. Osterman  
Joelle M. Pauporte  
Palanci/Lauber CancerCare  
for Kids® Fund  
Marie C. Pelster  
Murray Praver  
Irving and Millie Press  
Princeton Against  
Cancer Together  
Queensboro Hill  
Jewish Center  
Resnik Family Helping  
Children Cope Fund  
Janette Rodin  
Elisa C. Rosa  
Valerie A. Rosa  
Memorial Fund  
Samuel Rosen Memorial  
Endowment  
Glenn Rosenberg  
Arlene Sambur  
David Schector  
Adam Sherman  
Nathan Sivin

Diane S. Snyder  
Suzanne Mercier Staats  
Memorial Fund  
Max Steiner  
Maria Sweeney  
Phyllis Tarlow  
Frank Tarnai Memorial Fund  
Neil Terk  
Peter Thompson  
Elaine Torre  
Jeff Valente  
Michael T. Welch  
Danielle Whalen  
Memorial Foundation  
Florence S. Whelan  
Mr. David M. Wiltse  
Benedict Yedlin  
Hank Zimmerman  
Sandra and Jeffrey  
Zimmerman Helping  
Children Cope Fund

### **The Cecile Sawyer Society**

*Named in honor of the  
first generous bequests to  
CancerCare, the society  
recognizes donors who  
have included CancerCare  
in their estate plans.*

Syril Appel  
Frank Bamberger  
Esther Buskirk  
Donnie V. Cahn  
Marvin Cohen  
Carol A. Cusmano

Cathleen Donohue  
Timothy M. Dwyer  
Lilly Forrow  
Lori Fox  
Marjorie Grimm  
Jane Hartwell  
Wendy Hases  
Phillip S. Jaffe  
Gertrude Jelinek  
Madelyn Kane  
Nancy Kern  
Joanee Knetge  
Edward C. Lauber  
Lynn Leinwohl  
Betty Marks  
Shirley Monticello  
Constance Mrak  
Brian Neary  
Anita Nelkin  
Lorraine Posner  
Sheila Rakowsky  
June W. Ryan  
Edward S. Salwen  
Dorothy Schachne  
Sandy Scibetta  
Donald M. Shachat  
Sol Smolen  
June C. Starck  
Marion P. Steinger  
Alan P. Thurston  
Lucy Vogel  
Marie E. Wahn  
Herbert Waldren  
Leonora Weinblatt  
Harvey M. Weitkamp

Harvey Weitz  
Refna M. Wilkin  
Naomi R. Zuckerman



# financial summary as of and for the year ended June 30, 2008 (2007)

|  | CANCER CARE, INC.                        |                   | CANCER CARE CO-PAYMENT ASSISTANCE FOUNDATION, INC. |                   | ELIMINATION ENTRIES |                  | TOTAL    |                   |                   |
|--|--|-------------------|--|-------------------|---------------------|------------------|----------|-------------------|-------------------|
| <b>CONDENSED STATEMENT OF FINANCIAL POSITION</b> |  |                   |  |                   |                     |                  |          |                   |                   |
| <b>ASSETS</b>                                    |  |                   |  |                   |                     |                  |          |                   |                   |
|  | Cash and cash equivalents                | 464,385           | 581,224  | 68,894            | —                   | —                | —        | 533,279           | 581,224           |
|  | Short-term investments                   | 3,909,232         | 3,869,811  | 11,821,000        | —                   | —                | —        | 15,730,232        | 3,869,811         |
|  | Intercompany receivable                  | 287,490           | —  | —                 | —                   | (287,490)        | —        | —                 | —                 |
|  | Grants and contributions receivable      | 3,767,865         | 1,063,191  | —                 | —                   | —                | —        | 3,767,865         | 1,063,191         |
|  | Prepaid expenses and other assets        | 257,261           | 338,600  | 80                | —                   | —                | —        | 257,341           | 338,600           |
|  | Investments                              | 12,174,101        | 13,048,742   | —                 | —                   | —                | —        | 12,174,101        | 13,048,742        |
|  | Property and equipment, net              | 903,019           | 1,067,423  | 36,390            | —                   | —                | —        | 939,409           | 1,067,423         |
|  | <b>TOTAL ASSETS</b>                      | <b>21,763,353</b> | <b>19,968,991</b>                                  | <b>11,926,364</b> | <b>—</b>            | <b>(287,490)</b> | <b>—</b> | <b>33,402,227</b> | <b>19,968,991</b> |
| <b>LIABILITIES AND NET ASSETS</b>                |  |                   |  |                   |                     |                  |          |                   |                   |
|  | Accounts payable and accrued liabilities | 1,108,155         | 1,015,198  | 18,889            | —                   | —                | —        | 1,127,044         | 1,015,198         |
|  | Intercompany payable                     | —                 | —  | 287,490           | —                   | (287,490)        | —        | —                 | —                 |
|  | Refundable advances                      | 184,386           | 37,000   | —                 | —                   | —                | —        | 184,386           | 37,000            |
|  | Co-payment assistance obligations        | —                 | —  | 769,976           | —                   | —                | —        | 769,976           | —                 |
|  | Deferred rent                            | 737,845           | 766,746  | —                 | —                   | —                | —        | 737,845           | 766,746           |
|  | Accrued postretirement benefit cost      | 388,198           | 418,910  | —                 | —                   | —                | —        | 388,198           | 418,910           |
|  | Annuities payable                        | 238,352           | 216,497  | —                 | —                   | —                | —        | 238,352           | 216,497           |
|  | <b>TOTAL LIABILITIES</b>                 | <b>2,656,936</b>  | <b>2,454,351</b>                                   | <b>1,076,355</b>  | <b>—</b>            | <b>(287,490)</b> | <b>—</b> | <b>3,445,801</b>  | <b>2,454,351</b>  |
|  | Unrestricted net assets                  | 14,003,321        | 12,764,553   | (26,323)          | —                   | —                | —        | 13,976,998        | 12,764,553        |
|  | Temporarily restricted net assets        | 5,103,096         | 4,750,087  | 10,876,332        | —                   | —                | —        | 15,979,428        | 4,750,087         |
|  | <b>TOTAL NET ASSETS</b>                  | <b>19,106,417</b> | <b>17,514,640</b>                                  | <b>10,850,009</b> | <b>—</b>            | <b>—</b>         | <b>—</b> | <b>29,956,426</b> | <b>17,514,640</b> |
|  | <b>TOTAL LIABILITIES AND NET ASSETS</b>  | <b>21,763,353</b> | <b>19,968,991</b>                                  | <b>11,926,364</b> | <b>—</b>            | <b>(287,490)</b> | <b>—</b> | <b>33,402,227</b> | <b>19,968,991</b> |



bbb.org/charity

CancerCare meets all 20 standards for charity accountability of the Better Business Bureau Wise Giving Alliance. Find the full report online at [www.bbb.org/charity](http://www.bbb.org/charity).

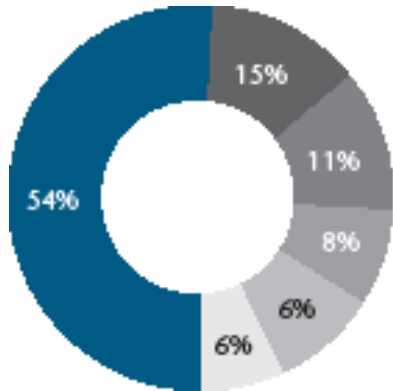


financial summary as of and for the year ended June 30, 2008 (2007)

|  | CANCER CARE, INC.                      |                   | CANCER CARE CO-PAYMENT ASSISTANCE FOUNDATION, INC. |                   | ELIMINATION ENTRIES |                 | TOTAL    |                   |                   |
|--|--|-------------------|--|-------------------|---------------------|-----------------|----------|-------------------|-------------------|
| <b>CONDENSED STATEMENT OF ACTIVITIES</b>                 |  |                   |  |                   |                     |                 |          |                   |                   |
| <b>SUPPORT AND REVENUE</b>                               | Corporate and foundation contributions | 10,410,547        | 9,328,449  | 1,573,668         | —                   | —               | —        | 11,984,215        | 9,328,449         |
|  | Individual contributions               | 1,891,074         | 2,229,192  | —                 | —                   | —               | —        | 1,891,074         | 2,229,192         |
|  | Legacies and bequests                  | 3,278,243         | 1,748,765  | —                 | —                   | —               | —        | 3,278,243         | 1,748,765         |
|  | Special events, net                    | 2,536,660         | 2,490,372  | —                 | —                   | —               | —        | 2,536,660         | 2,490,372         |
|  | Other contributions                    | 1,040,662         | 1,131,524  | —                 | —                   | —               | —        | 1,040,662         | 1,131,524         |
|  | Donated goods and services             | 1,402,571         | 1,515,853  | —                 | —                   | —               | —        | 1,402,571         | 1,515,853         |
|  | Interest and other revenue             | 225,848           | 182,812  | 112,818           | —                   | (24,580)        | —        | 314,086           | 182,812           |
|  | <b>TOTAL SUPPORT AND REVENUE</b>       | <b>20,785,605</b> | <b>18,626,967</b>                                  | <b>1,686,486</b>  | <b>—</b>            | <b>(24,580)</b> | <b>—</b> | <b>22,447,511</b> | <b>18,626,967</b> |
| <b>EXPENSES</b>  | Counseling and support                 | 5,381,284         | 5,275,852  | —                 | —                   | —               | —        | 5,381,284         | 5,275,852         |
|  | Financial assistance                   | 4,782,297         | 4,100,647  | —                 | —                   | —               | —        | 4,782,297         | 4,100,647         |
|  | Co-payment assistance                  | —                 | —  | 1,547,852         | —                   | (24,580)        | —        | 1,523,272         | —                 |
|  | Education                              | 1,129,688         | 1,112,134  | —                 | —                   | —               | —        | 1,129,688         | 1,112,134         |
|  | Information and publications           | 3,786,844         | 3,758,817  | 61,590            | —                   | —               | —        | 3,848,434         | 3,758,817         |
|  | <b>Program services</b>                | <b>15,080,113</b> | <b>14,247,450</b>                                  | <b>1,609,442</b>  | <b>—</b>            | <b>(24,580)</b> | <b>—</b> | <b>16,664,975</b> | <b>14,247,450</b> |
|  | Fundraising                            | 2,896,034         | 3,123,463  | 33,698            | —                   | —               | —        | 2,929,732         | 3,123,463         |
|  | Management and general                 | 736,029           | 789,598  | 69,669            | —                   | —               | —        | 805,698           | 789,598           |
|  | <b>TOTAL EXPENSES</b>                  | <b>18,712,176</b> | <b>18,160,511</b>                                  | <b>1,712,809</b>  | <b>—</b>            | <b>(24,580)</b> | <b>—</b> | <b>20,400,405</b> | <b>18,160,511</b> |
| <b>CHANGE IN UNRESTRICTED NET ASSETS FROM OPERATIONS</b> |  | <b>2,073,429</b>  | <b>466,456</b>                                     | <b>(26,323)</b>   | <b>—</b>            | <b>—</b>        | <b>—</b> | <b>2,047,106</b>  | <b>466,456</b>    |
|  | Net return on investments              | (834,662)         | 1,733,312  | —                 | —                   | —               | —        | (834,662)         | 1,733,312         |
| <b>CHANGE IN UNRESTRICTED NET ASSETS</b>                 |  | <b>1,238,767</b>  | <b>2,199,768</b>                                   | <b>(26,323)</b>   | <b>—</b>            | <b>—</b>        | <b>—</b> | <b>1,212,444</b>  | <b>2,199,768</b>  |
|  | Temporarily restricted contributions   | 6,531,245         | 6,625,401  | 12,450,000        | —                   | —               | —        | 18,981,245        | 6,625,401         |
|  | Net assets released from restrictions  | (6,178,235)       | (5,591,138)  | (1,573,668)       | —                   | —               | —        | (7,751,903)       | (5,591,138)       |
| <b>CHANGE IN TEMPORARILY RESTRICTED NET ASSETS</b>       |  | <b>353,010</b>    | <b>1,034,263</b>                                   | <b>10,876,332</b> | <b>—</b>            | <b>—</b>        | <b>—</b> | <b>11,229,342</b> | <b>1,034,263</b>  |
| <b>CHANGE IN NET ASSETS</b>                              |  | <b>1,591,777</b>  | <b>3,234,031</b>                                   | <b>10,850,009</b> | <b>—</b>            | <b>—</b>        | <b>—</b> | <b>12,441,786</b> | <b>3,234,031</b>  |

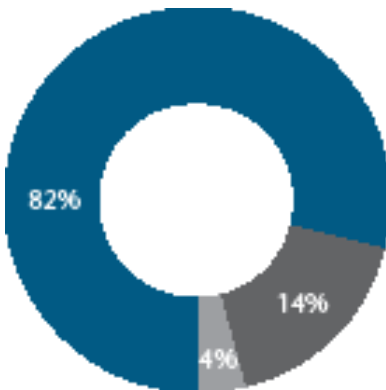
THE STATEMENT OF FINANCIAL POSITION OF CANCER CARE, INC. AND THE CANCER CARE CO-PAYMENT ASSISTANCE FOUNDATION, INC. AS OF JUNE 30, 2008 AND 2007 AND RELATED STATEMENTS OF ACTIVITIES AND CHANGES IN NET ASSETS, STATEMENTS OF FUNCTIONAL EXPENSES, AND STATEMENTS OF CASH FLOWS FOR THE YEARS THEN ENDED WERE AUDITED BY KPMG, LLP. THE CONDENSED FINANCIAL STATEMENTS HAVE BEEN DERIVED FROM THE AUDITED FINANCIAL STATEMENTS. COPIES OF THE RELATED AUDIT REPORT AND COMPLETE FINANCIAL STATEMENTS ARE AVAILABLE ON CANCERCARE'S WEBSITE WWW.CANCERCARE.ORG OR ARE AVAILABLE UPON REQUEST TO FINANCE DEPARTMENT, CANCER CARE, INC. AT 275 SEVENTH AVENUE, NEW YORK, NEW YORK 10001.

# financial summary as of and for the year ended June 30



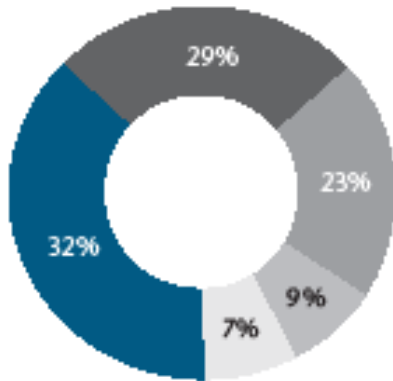
## unrestricted revenue (\$22.5 million)

- 54% Corporations and Foundations (\$12.0 million)
- 15% Legacies and Bequests (\$3.3 million)
- 11% Special Events (\$2.5 million)
- 8% Individual Contributions (\$1.9 million)
- 6% Donated Goods and Services (\$1.4 million)
- 6% Other (\$1.4 million)



## expenses (\$20.5 million)

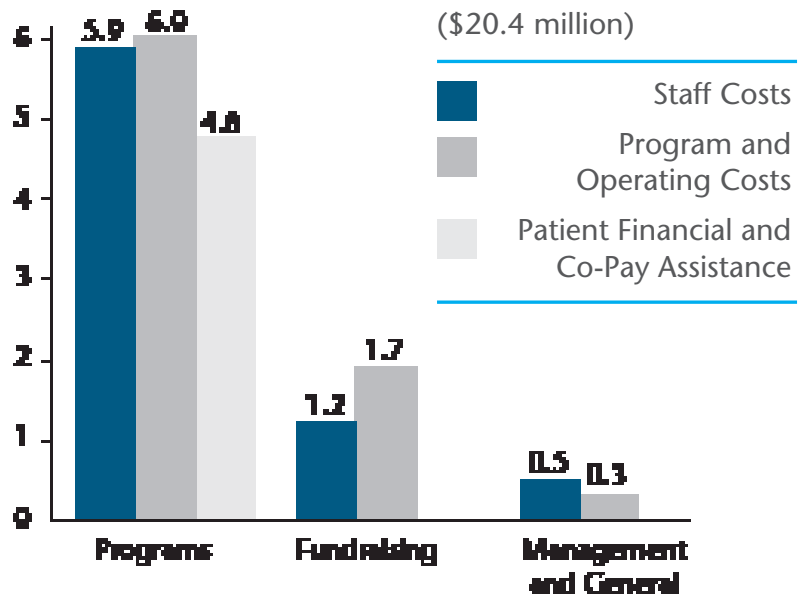
- 82% Program Services (\$16.7 million)
- 14% Fundraising (\$2.9 million)
- 4% Management and General (\$0.8 million)



### program service expenses (\$16.6 million)

|     |  |
|-----|--|
| 32% | Counseling and Support (\$5.4 million)       |
| 29% | Financial Assistance (\$4.8 million)         |
| 23% | Information and Publications (\$3.8 million) |
| 9%  | Co-Payment Assistance (\$1.5 million)        |
| 7%  | Education (\$1.1 million)                    |

### expense overview by function



#### [national office](#)

275 seventh avenue  
new york, ny 10001

#### [services](#)

tel: 1-800-813-HOPE (4673)

#### [administration](#)

tel: 212-712-8400  
fax: 212-712-8495  
email: [info@cancercare.org](mailto:info@cancercare.org)  
[www.cancercare.org](http://www.cancercare.org)

A copy of the last financial report, filed with the Department of State, may be obtained online at [www.cancercare.org/about\\_us/financials.php](http://www.cancercare.org/about_us/financials.php); or by writing to: New York State Department of Law, Charities Bureau, 120 Broadway, New York, NY 10271.

CancerCare is grateful to the creative team at Altum for the design and production of this report; and to our clients for sharing their stories and likenesses. Photos by Lindsay Snow Osborn and Marty Umans.



**CANCERcare**<sup>®</sup>